

# FOR LEASE



1421 Montgomery Dr., Ste A, Santa Rosa, CA. 95405

**\$2,000/mo.**

*For Lease*

Approximately 840 square feet building.  
Ground level, waiting room, business office,  
restroom, lab, & 3 private offices.

*3-5 Year Lease*

*Price: Lease: Approximately \$2.38 per sq. ft.  
gross/\$2,000 per month*

*Term: 3-5 Years*

*Zoning: CO (Office - Commercial)*

*Comments: Less than a block to Memorial Hospital;  
located on the corner of Montgomery & Talbot.*

*Available now.*

**Bryant Moynihan**  
Nexus Realty Group, Inc.

DRE # 00914397

**707.484.2566**

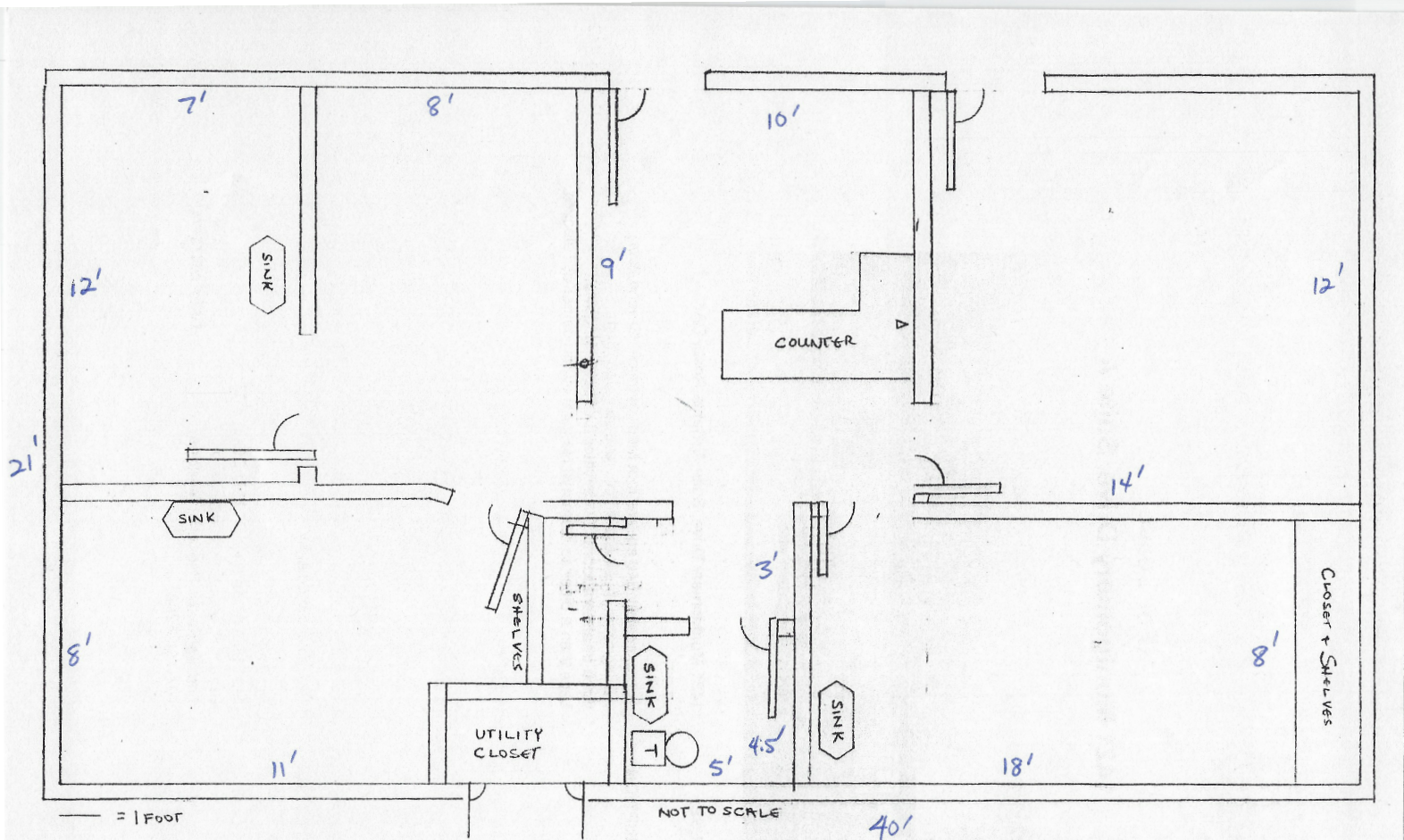
bryant@nexusrealty.com



P.O. Box 2210 Petaluma, CA 94953

# Building Floor Plan

1421 Montgomery Dr., A, Santa Rosa, CA. 95405



ALL MEASUREMENT ARE APPROXIMATE AND SHOULD BE VERIFIED.

Suite A  
Approx. 840 sq.



**Bryant Moynihan**

Nexus Realty Group, Inc.

DRE # 00914397

707.484.2566

bryant@nexusrealty.com