

# FOR LEASE

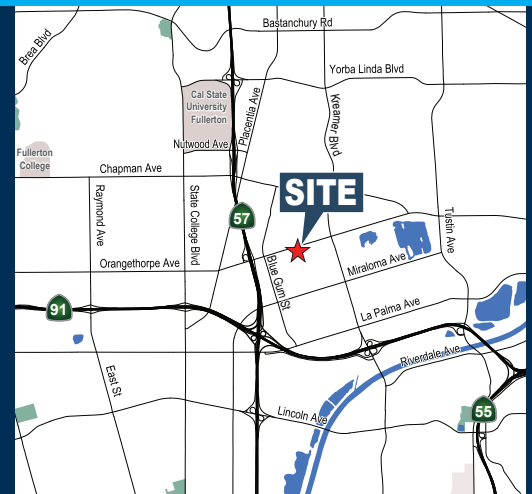
# ORANGETHORPE COMMERCENTER



**330 EAST ORANGETHORPE AVENUE | PLACENTIA, CA 92870**

**PROPERTY FEATURES**

- High Image Multi-Tenant Business Park
- Warehouse/Office Suites Available
- Suites Range from 1,232 to 4,144 Sq. Ft.
- Frontage For Select Suites
- 2:1 Parking Ratio (2 spaces per 1,000 Sq. Ft.)
- Ground Level Loading
- Excellent Access to the Orange (57), and Riverside (91) Freeways



## **Voit**

REAL ESTATE SERVICES

**Hayden Socci, SIOR, CCIM**  
Senior Vice President | Partner

(714) 935-2379  
hsocci@voitco.com  
Lic. #01705038

2400 E. Katella Avenue | Suite 750 | Anaheim, California 92806 | (714) 978-7880 | (714) 978-9431 FAX | Lic #01991785 | [www.VoitCo.com](http://www.VoitCo.com)

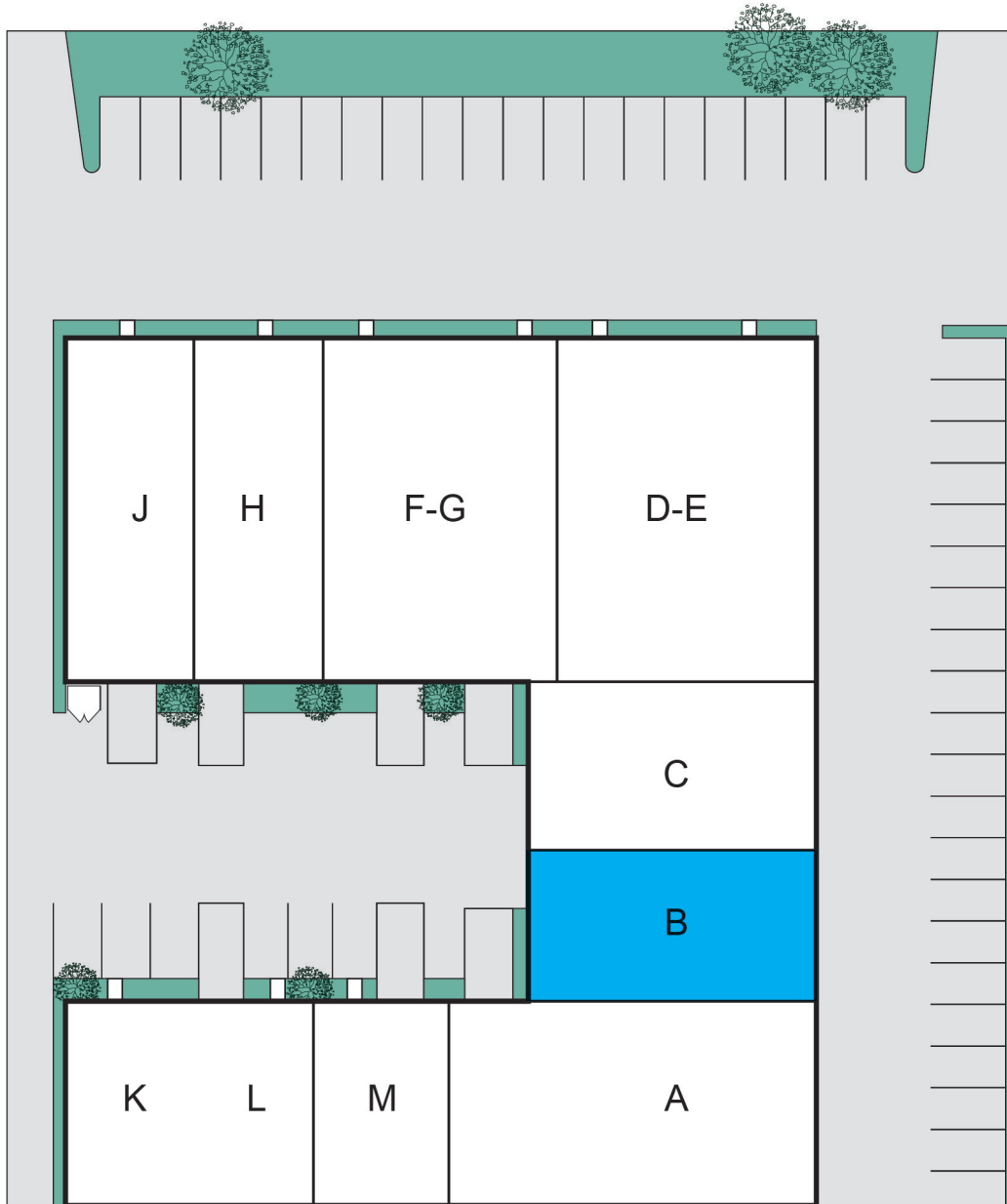
Licensed as a Real Estate Salesperson by the DRE. The information contained herein has been obtained from sources we deem reliable. While we have no reason to doubt its accuracy, we do not guarantee it. ©2026 Voit Real Estate Services, Inc. All Rights Reserved. Lic #01991785.

# FOR LEASE

# ORANGETHORPE COMMERCENTER

330 EAST ORANGETHORPE AVENUE | PLACENTIA, CA 92870

ORANGETHORPE AVE



## **Voit**

REAL ESTATE SERVICES

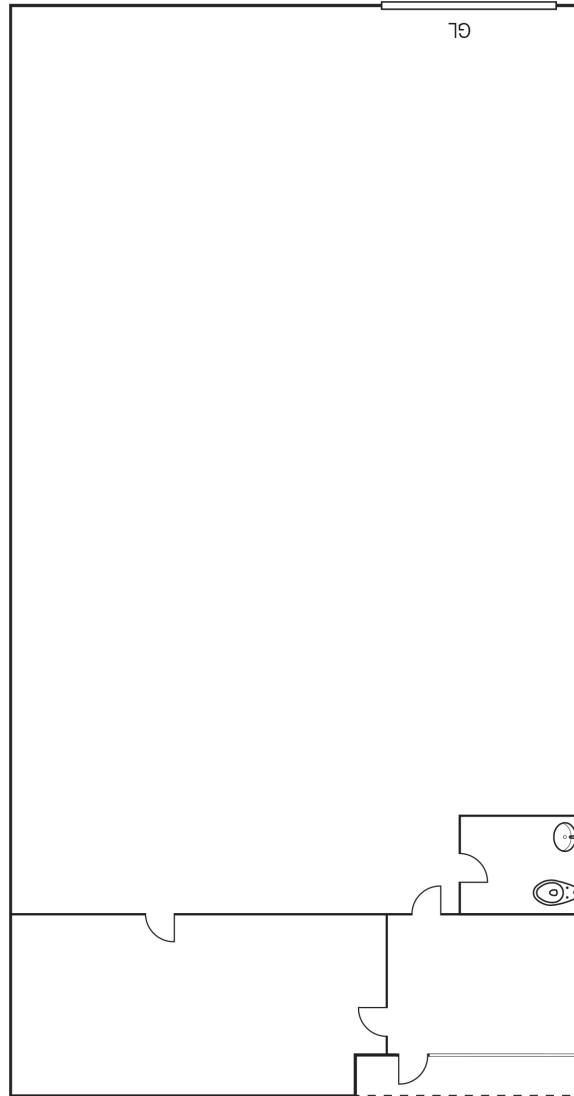
**Hayden Socci, SIOR, CCIM**  
Senior Vice President | Partner

(714) 935-2379  
hsocci@voitco.com  
Lic. #01705038

# FOR LEASE

# ORANGETHORPE COMMERCENTER

SUITE B | ±2,250 SQ. FT.



Note: Floor plan is approximate and may not be to scale.

ADDRESS	SUITE	SF	OFFICE SIZE	LEASE RATE PSF	MONTHLY BASE RENT	COMMENTS
330 E. Orangethorpe Ave.	B	±2,250	±400	\$1.39 MG	\$3,128.00	Reception, open office area, restroom and large warehouse with ground level loading door.

**Voit**  
REAL ESTATE SERVICES

**Hayden Socci, SIOR, CCIM**  
Senior Vice President | Partner  
(714) 935-2379  
hsocci@voitco.com  
Lic. #01705038