

# FOR LEASE

## 6901 District Blvd - Suite G1

Bakersfield, CA



# For Lease Warehouse | Storage | Distribution

## Property Details

6901 District Blvd - Suite G1  
Bakersfield, CA 93313



### PROPERTY DETAILS

- Total Available Space – 12,099 SF
- Warehouse Space – 12,099 SF
- Dock Doors – Three (3) 10' x 10'
- Ground Level Door - One (1) 10'x10' via ramp access
- Warehouse comes with five (5) rows of existing racking

### PROPERTY HIGHLIGHTS

- Construction Type – Concrete Tilt-Up
- Fire Sprinklers – Wet Pipe – 0.33GPM/3,000 SF
- Zoning – M-2 (Medium Industrial), City of Bakersfield
- Located in the Stockdale Industrial Park submarket
- Total Project Size: 220,019 SF
- Project Size: 10.68 Acres
- Year Built: 1987 - 1988
- APN: 385-014-07
- Clear Height – 22' – 24'
- Column Spacing – 60' x 20'

### LEASE RATE: \$0.55/PSF/NNN

### UTILITIES

- Electric: PG&E 200 amps of 277/480 volt
- Gas: PG&E
- Water: California Water Service
- Sewer: City of Bakersfield



**Wesley M. McDonald** ▪ Principal ▪ 661 885 6950 ▪ wesley.mcdonald@asuassociates.com ▪ CA RE #01511739  
**Parker Reynolds** ▪ Associate ▪ 661 885 6925 ▪ parker@asuassociates.com ▪ CA RE #02156913  
11601 Bolthouse Drive Suite 110 ▪ Bakersfield, CA 93311 ▪ 661 862 5454 main ▪ 661 862 5444 fax

# For Lease Warehouse | Storage | Distribution

## Site & Floor Plan

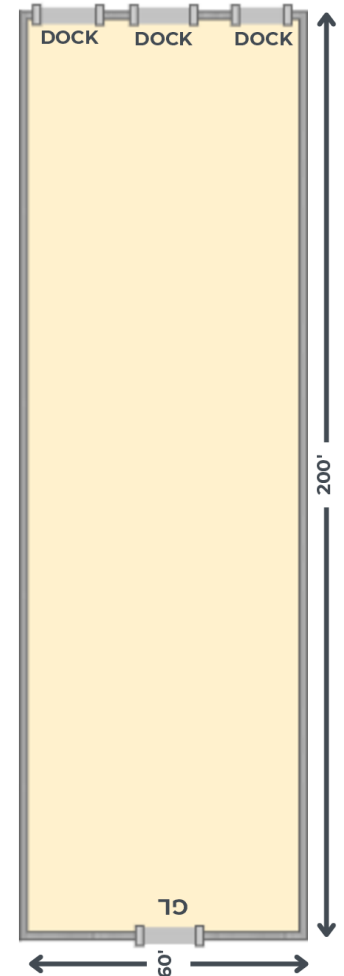
6901 District Blvd - Suite G1  
Bakersfield, CA 93313



Suite	Tenant	Size (SF)
6881-A	<b>AVAILABLE</b>	19,200
6881-B/C	HD Supply Facilities Maintenance	37,600

Suite	Tenant	Size (SF)
6901-A	Well East International, Inc.	9,737
6901-B	Material Control, Inc.	35,800
6901-C	Walker Lewis Rents	12,000
6901-D	Material Control, Inc.	24,000
6901-E	Glam & Glits, Inc.	24,000
6901-F	Destiny Packaging	36,000
6901-G-1	<b>AVAILABLE</b>	12,099
6901-G-2	Flooring Liquidators	9,583

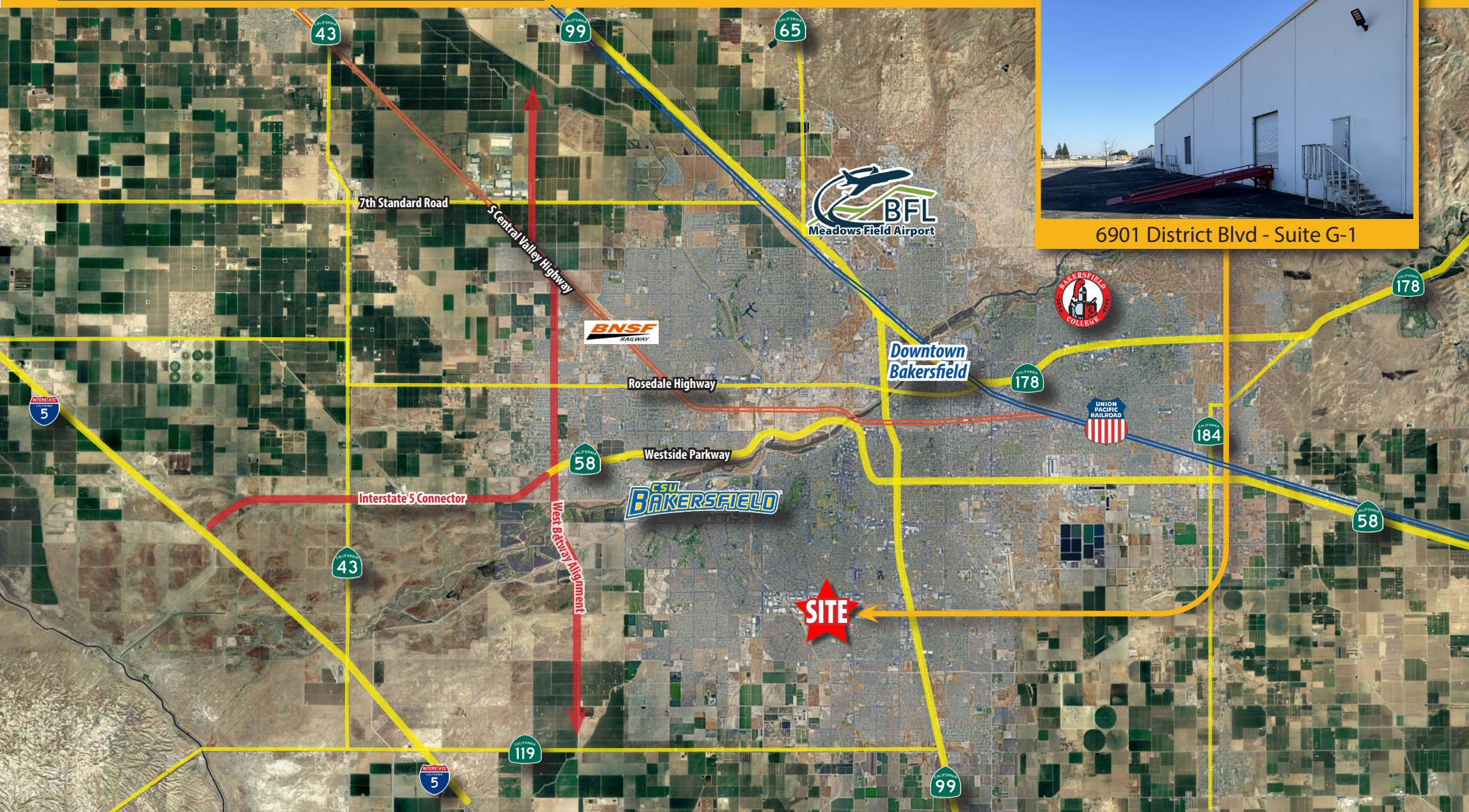
\*Plans deemed to be accurate, but not guaranteed. Plan not to scale.



# For Lease Warehouse | Storage | Distribution

## Bakersfield Area Roadways

6901 District Blvd - Suite G1  
Bakersfield, CA 93313



6901 District Blvd - Suite G-1



**Wesley M. McDonald** • Principal • 661 885 6950 • [wesley.mcdonald@asuassociates.com](mailto:wesley.mcdonald@asuassociates.com) • CA RE #01511739  
**Parker Reynolds** • Associate • 661 885 6925 • [parker@asuassociates.com](mailto:parker@asuassociates.com) • CA RE #02156913  
11601 Bolthouse Drive Suite 110 • Bakersfield, CA 93311 • 661 862 5454 main • 661 862 5444 fax