



Access From Winona Ave. & Floyd St.
Minutes to Burbank Airport



2911 WINONA AVE | BURBANK, CA

EXCELLENT BURBANK LOCATION

10,000 SF Free Standing Building on Paved & Fenced Yard



No warranty or representation is made to the accuracy of the foregoing information. Terms of sale or lease and availability are subject to change or withdrawal without notice.

PATRICK REDDY
Principal
818.933.0348
preddy@lee-re.com
DRE# 01901872

BUILDING FEATURES

2911 WINONA AVE



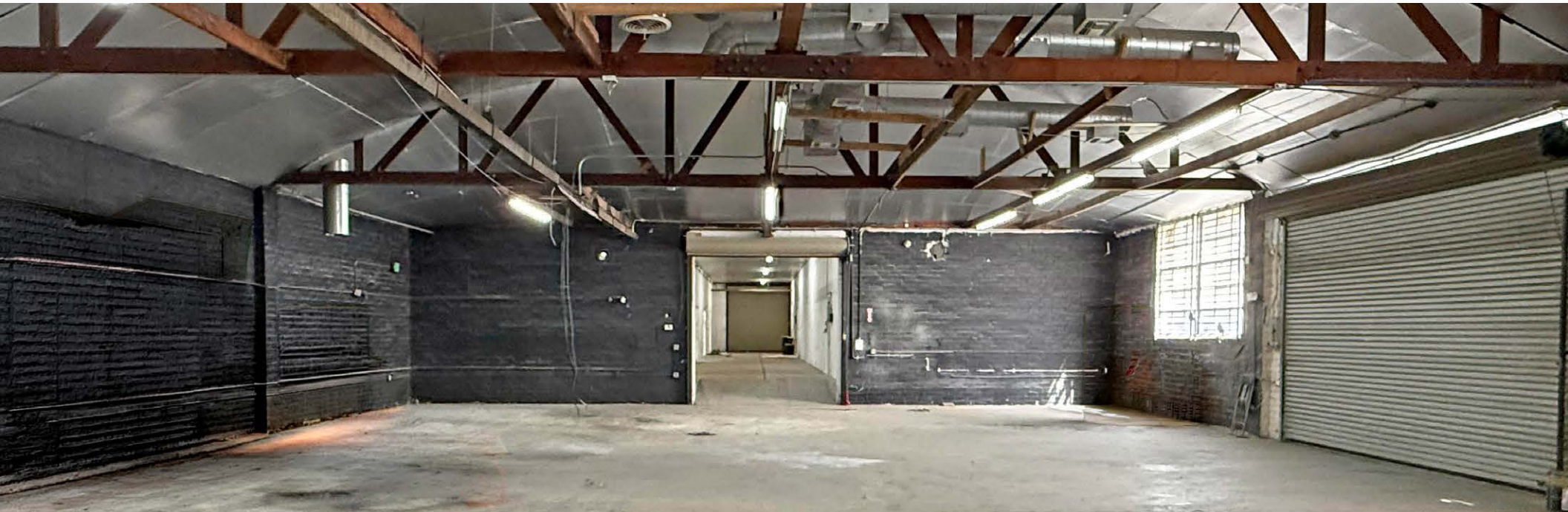
10,000 SF
Square Footage



12'
Minimum Clear Height



800A | 277/480V
Power – 3 Phase

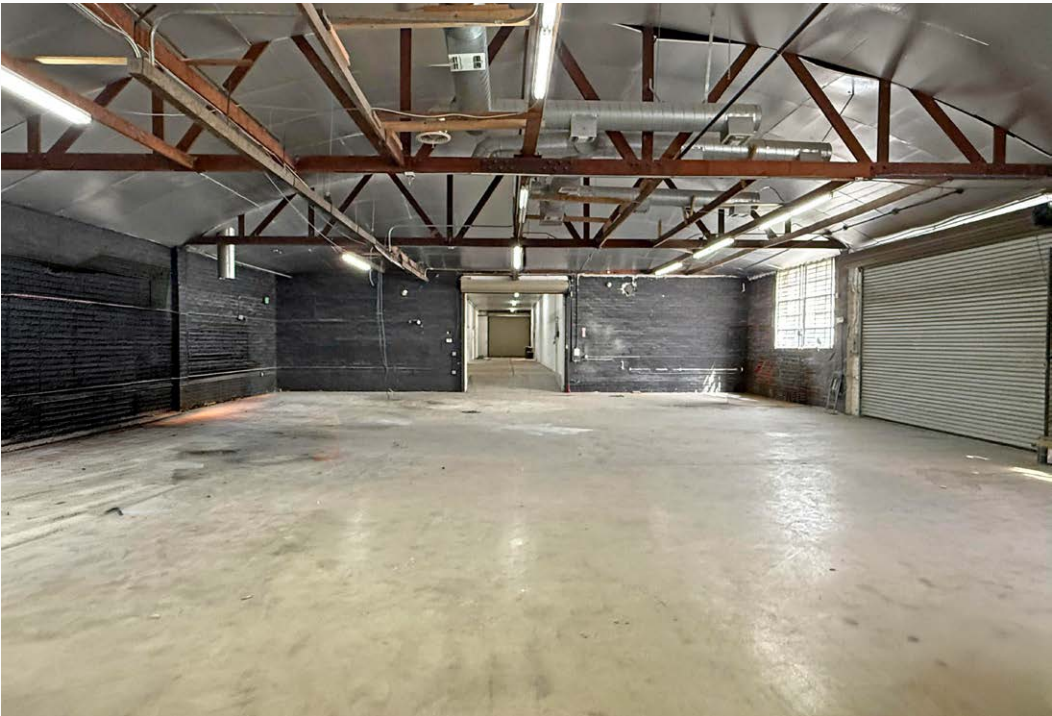


PROPERTY HIGHLIGHTS

- Bow truss ceilings
- 3 GL doors
- Zoning M2
- \$1.40 PSF Industrial Gross

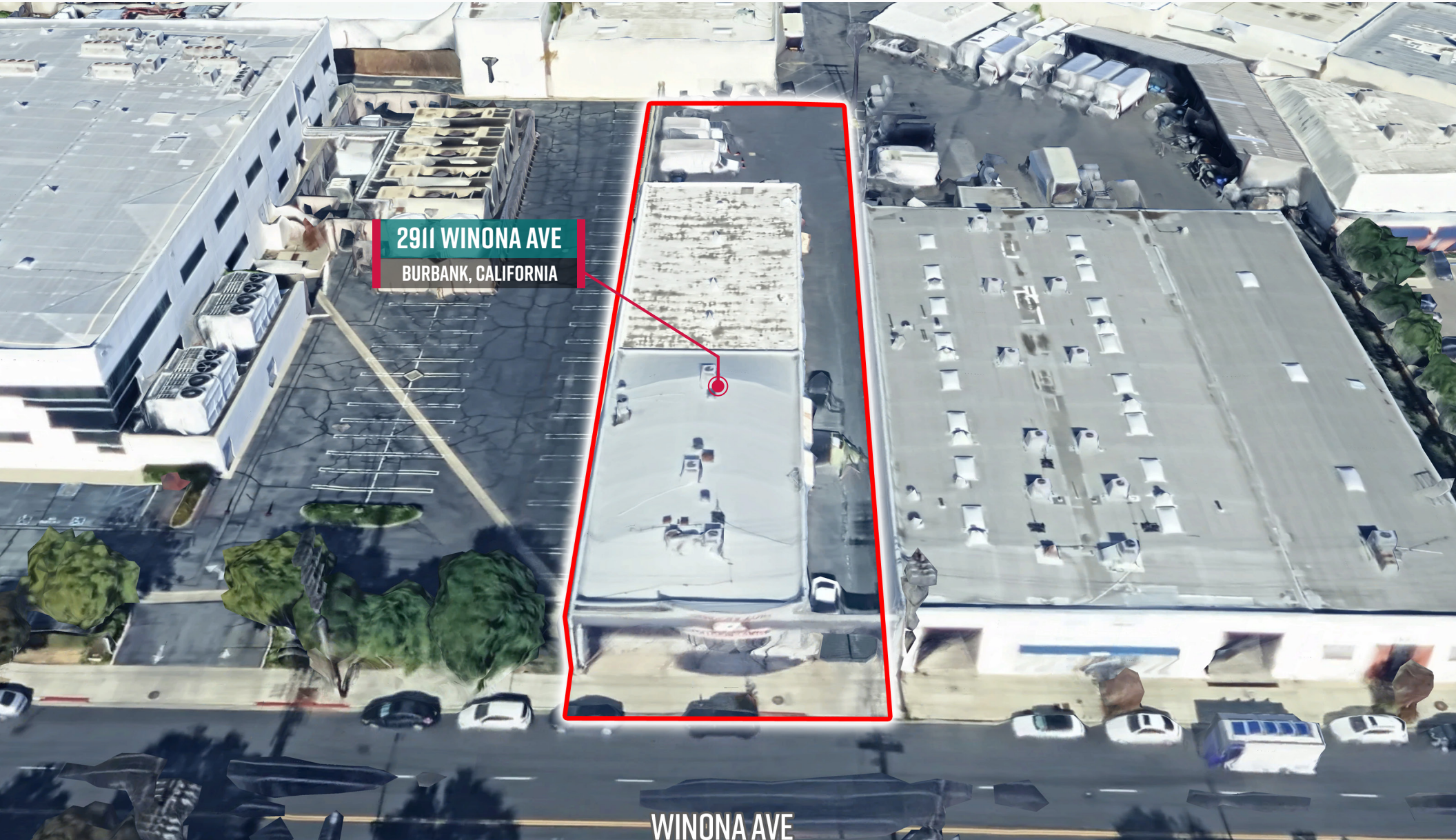
PROPERTY PHOTOS

2911 WINONA AVE



PROPERTY LOCATION

2911 WINONA AVE



2911 WINONA AVE
BURBANK, CALIFORNIA

WINONA AVE

PROPERTY LOCATION

2911 WINONA AVE



2911
Winona Ave
Burbank, CA

Logos for OVALERIA SUPERMARKETS, STARBUCKS COFFEE, FAT BURGER, SUBWAY, metro PCS, planet fitness, and WSS.

Logos for Marriott, McDonald's, Poffo Loco, Denny's, Panda Express, STARBUCKS COFFEE, and DELTACO.

Logos for Party City, KFC, and SUBWAY.

Logos for Ralphs, SportClips (HAIRCUTS), CVS pharmacy, Round table, us bank, and SUBWAY. Below these is a logo for Yogurtland.

Logos for Walmart, BEST BUY, REI, TARGET, CVS pharmacy, NORDSTROM rack, STAPLES, NUTRISHOP, 24 FITNESS, Marshalls, TJ-maxx, Michaels, LOWE'S, ULTA, BevMo!, EXTENDED STAYAMERICA, Olive Garden, COURT YARD, STARBUCKS COFFEE, PANDA EXPRESS, PIZZA HUT, Jamba Juice, BLAZE PIZZA, DAVID'S BRIDAL, OUTBACK STEAKHOUSE, TILLY'S, Krispy Kreme Doughnuts, Sharky's Woodfired Mexican Grill, HOOK BURGER, Wendy's, GNC, west elm, and SEPHORA.

Logos for Ralphs, SPROUTS, CVS pharmacy, STARBUCKS COFFEE, WELLS FARGO, TACO BELL, IHOP, BOB'S FURNITURE, POPEYES, McDonald's, Shakey's, CRACK, YOSHINOYA, R. Beks, SHOEBLACE, Star's Jr., SUPERCUTS, Comenca, sears HOME SERVICES, BARNES & NOBLE BOOKSELLERS, Office DEPOT, IN-N-OUT BURGERS, and AMC THEATRES.

COSTCO
WHOLESALE

LEASING CONTACT

PATRICK REDDY

Principal

818.933.0348

preddy@lee-re.com

DRE# 01901872



No warranty or representation is made to the accuracy of the foregoing information. Terms of sale or lease and availability are subject to change or withdrawal without notice.