

# 4500 East West

4500 East-West Hwy, Bethesda, MD 20814



## Coworking, Private Offices & Suites

Located just 700 feet from the Bethesda Metro station and steps away from major bus lines and bike paths, 4500 East West offers prime accessibility, no matter your mode of transportation. The building is two blocks from the upcoming, new Purple Line transit stop, serving downtown Bethesda.

24,503 RSF

42 Offices

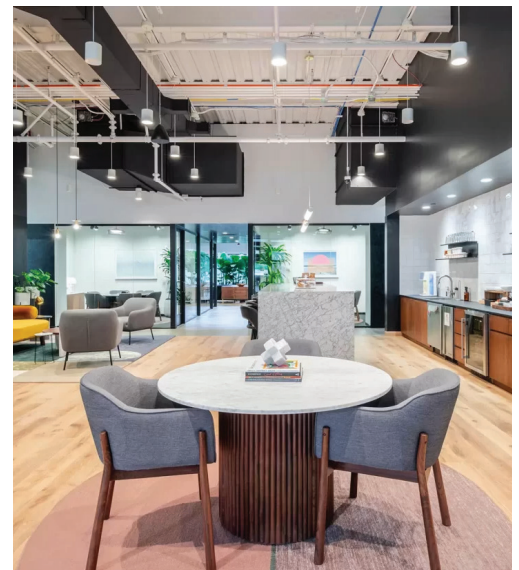
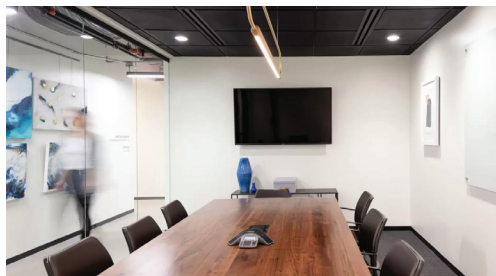
14 Meeting Rooms

### Industrious Amenities

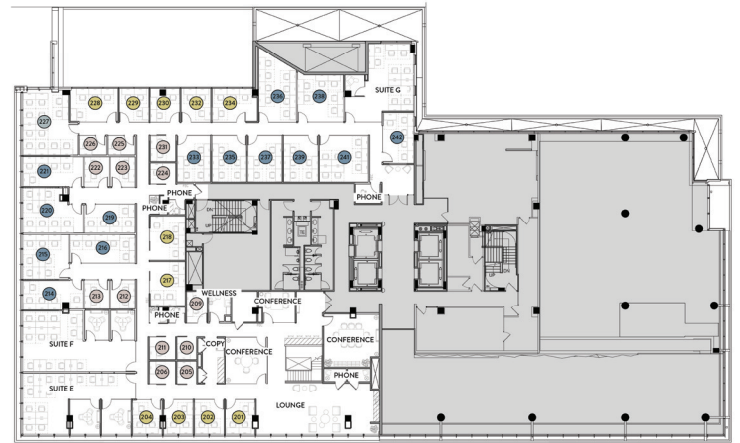
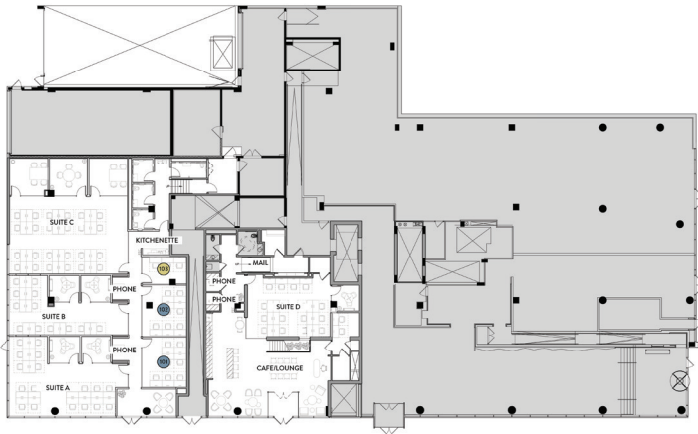
- Office supplies
- 24/7 access
- Mail and packaging
- Fast, secure Wi-Fi
- Community events
- 160+ Locations, 65+ Markets

### Building Amenities

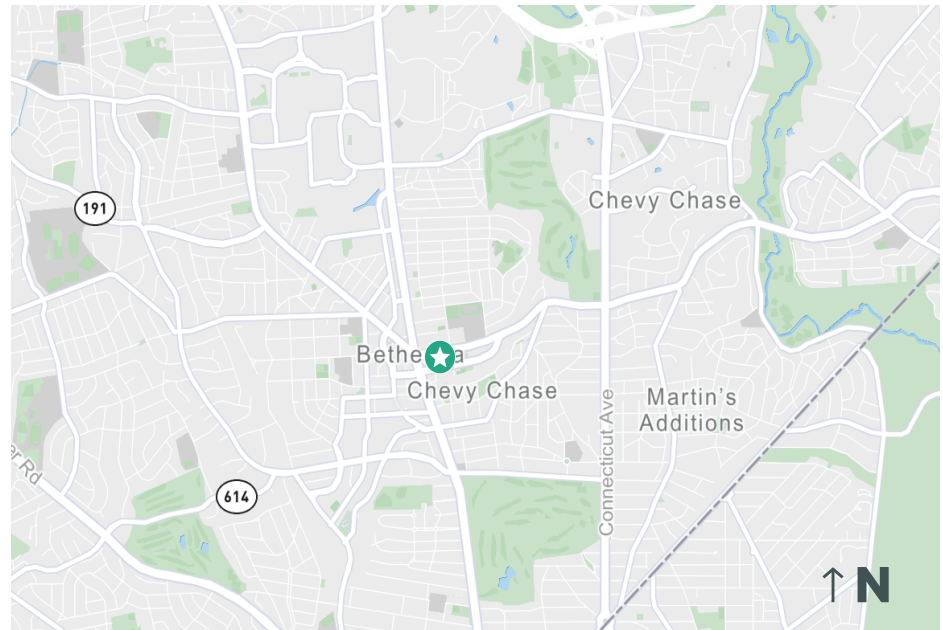
- Conference Center
- Fitness Center
- Secure Bike Room
- Rooftop Terrace with Catering Kitchen
- Parking Garage with Electric Car Charging Stations, On-Site Retail



# Floorplan



- Access Office
- Small Office (1-2)
- Medium Office (3-4)
- Large Office (5-8)
- XLarge Office (9+)
- Executive Office



## Contact Us

Tim Connolly  
 Vice President  
 tim.connolly@cbre.com