

# Pompano Park Sublease

2939 NW 27th Avenue  
Pompano Beach, FL 33069

41,444 SF Available



## Property Features:

- + Size: 41,444 SF
- + Office Area: 1,700 SF
- + Clear Height: 32'
- + Dock High Doors: 11, (7 with Pit Levelers)
- + ESFR Sprinklers
- + Full Racking
- + Sublease Term: 3/14/2028, (26 Months)
- + Available: Now
- + Asking: \$9.38 PSF NNN, Plus OPEX

## Contact Us

### Tom O'Loughlin

Vice Chairman  
+1 954 817 3919  
[tom.oloughlin@cbre.com](mailto:tom.oloughlin@cbre.com)

### Michael Oretsky

First Vice President  
+1 954 798 4284  
[michael.oretzky@cbre.com](mailto:michael.oretzky@cbre.com)

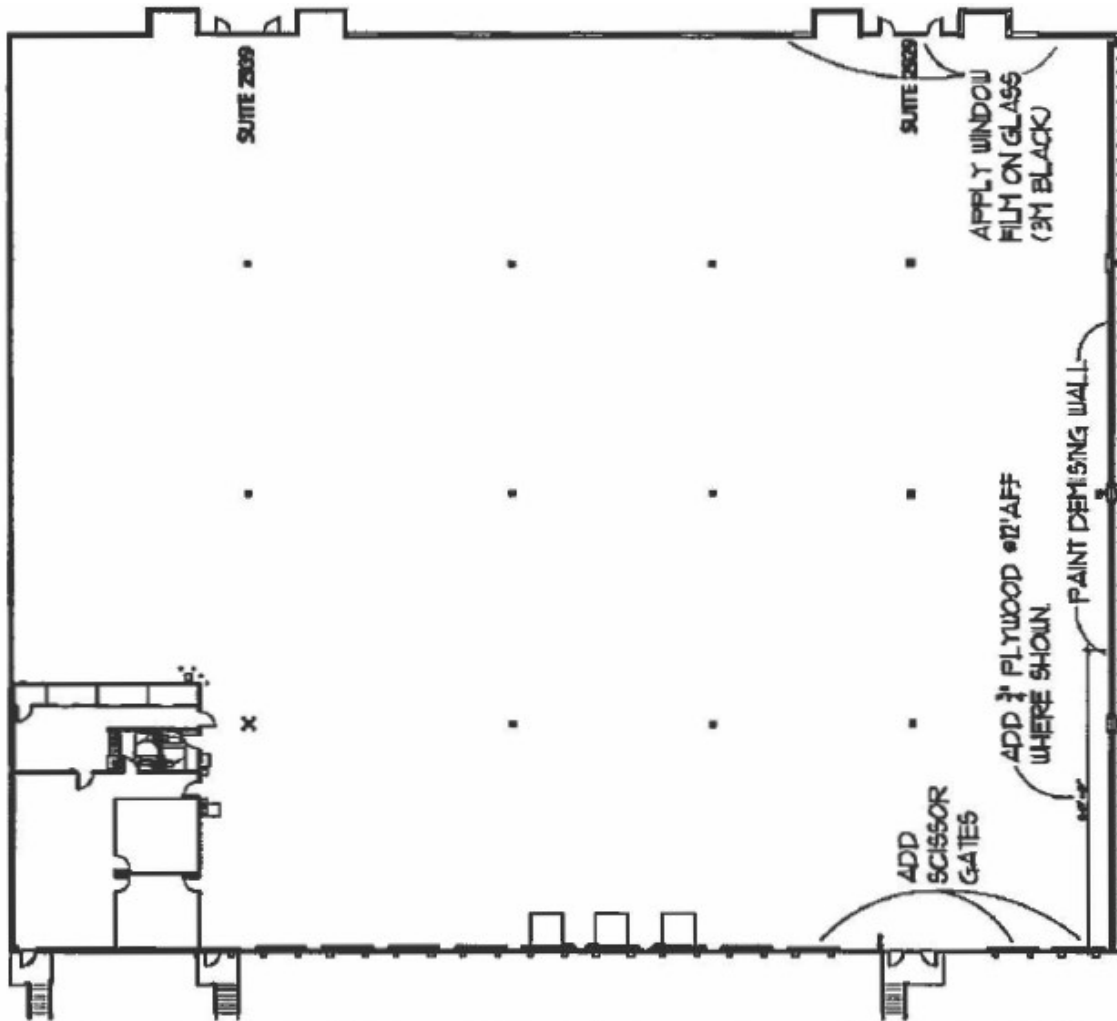
### Frankie Buffalino

Associate  
+1 516 640 8861  
[frank.buffalino@cbre.com](mailto:frank.buffalino@cbre.com)

# Pompano Park Sublease

2939 NW 27th Avenue | Pompano Beach, FL 33069

# For Sublease



© 2026 CBRE, Inc. All rights reserved. This information has been obtained from sources believed reliable, but has not been verified for accuracy or completeness. You should conduct a careful, independent investigation of the property and verify all information. Any reliance on this information is solely at your own risk. CBRE and the CBRE logo are service marks of CBRE, Inc. All other marks displayed on this document are the property of their respective owners, and the use of such logos does not imply any affiliation with or endorsement of CBRE. Photos herein are the property of their respective owners. Use of these images without the express written consent of the owner is prohibited.

