



Suite 3

6 George Street, Alderley Edge, SK9 7EJ

Office Suite in the Heart of Alderley Edge

101 sq ft
(9.38 sq m)

- All-Inclusive Rent
- Great Location
- Suitable for a Range of Occupiers
- Available from 1st October 2025

Suite 3, 6 George Street, Alderley Edge, SK9 7EJ

Summary

Available Size	101 sq ft
Rent	£320 per month All-Inclusive Rent
Business Rates	Occupier likely eligible for 100% small business rates relief.
VAT	Not applicable
Legal Fees	Each party to bear their own costs
EPC Rating	Upon enquiry

Description

Suite 3 at 6 George Street offers a first-floor office suite extending to 101 sq ft. The accommodation is well-suited for use as a private office or treatment room, with the benefit of a large window providing excellent natural light. Occupiers will have access to shared facilities including a kitchenette and separate male and female WCs. The suite is available on an all-inclusive rental basis, creating a straightforward and cost-effective option for small businesses or independent practitioners. The space will be ready for occupation from 1st October 2025, on a minimum term of 24 months.

Accommodation

The accommodation comprises the following areas:

Name	sq ft	sq m	Availability
1st - Suite 3	101	9.38	Available
Total	101	9.38	

Location

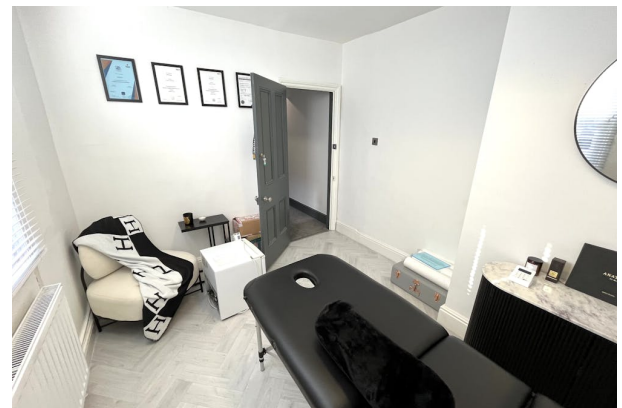
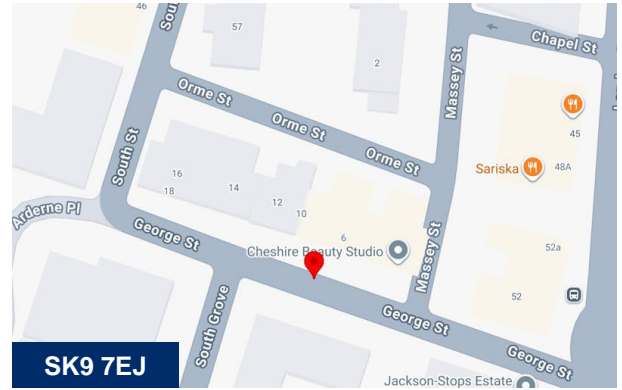
The property is prominently positioned on George Street in the heart of Alderley Edge village, a short walk from the train station and a wide range of shops, cafés, and amenities. Alderley Edge is a highly regarded Cheshire location, offering excellent road and rail connections with Wilmslow, Macclesfield, and Manchester. The central setting makes this suite an ideal choice for businesses seeking a professional yet accessible base.

Viewings

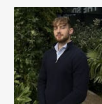
Strictly by appointment only with sole agents HALLAMS.

Terms

The premises are available from the 1st October 2025, by way of a new license for a minimum term of 24 months.



Viewing & Further Information



Ed Hobson

07775 871157

ehobson@hallams.com



Anthony Howcroft

01625 262222

ahowcroft@hallams.com

