



## 2870 N Ontario St

Burbank, California 91504

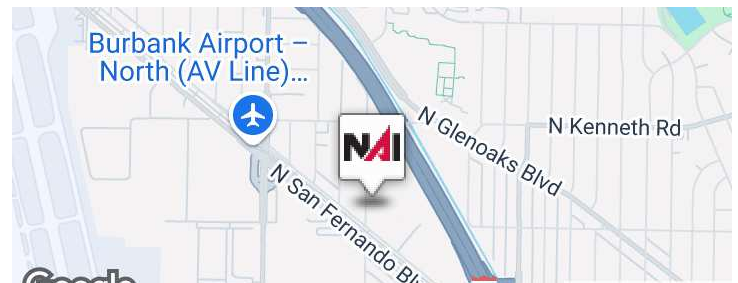
### Property Highlights

- Howard Business Park
- Class A Building
- High Image
- 24 Foot Clear
- 6,000 SF Office
- 39 Car Parking

### Property Overview

5 Freeway visibility, Burbank Airport Location

Spaces	Lease Rate	Space Size
2870 N Ontario St	\$1.70 SF/month	19,916 SF



### Offering Summary

Lease Rate:	\$1.70 SF/month (NNN/Month)
Building Size:	19,916 SF
Available SF:	19,916 SF
Lot Size:	POL

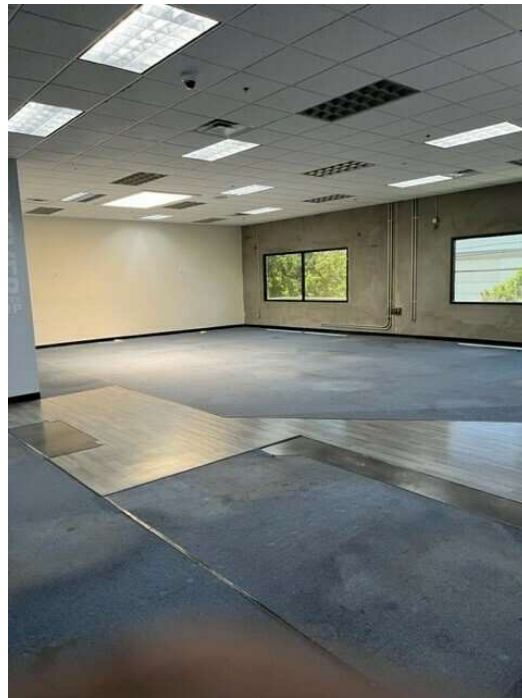
### For More Information

**Dave Maron**

O: 626 204 1516

dmaron@naicapital.com | CalDRE #00620557

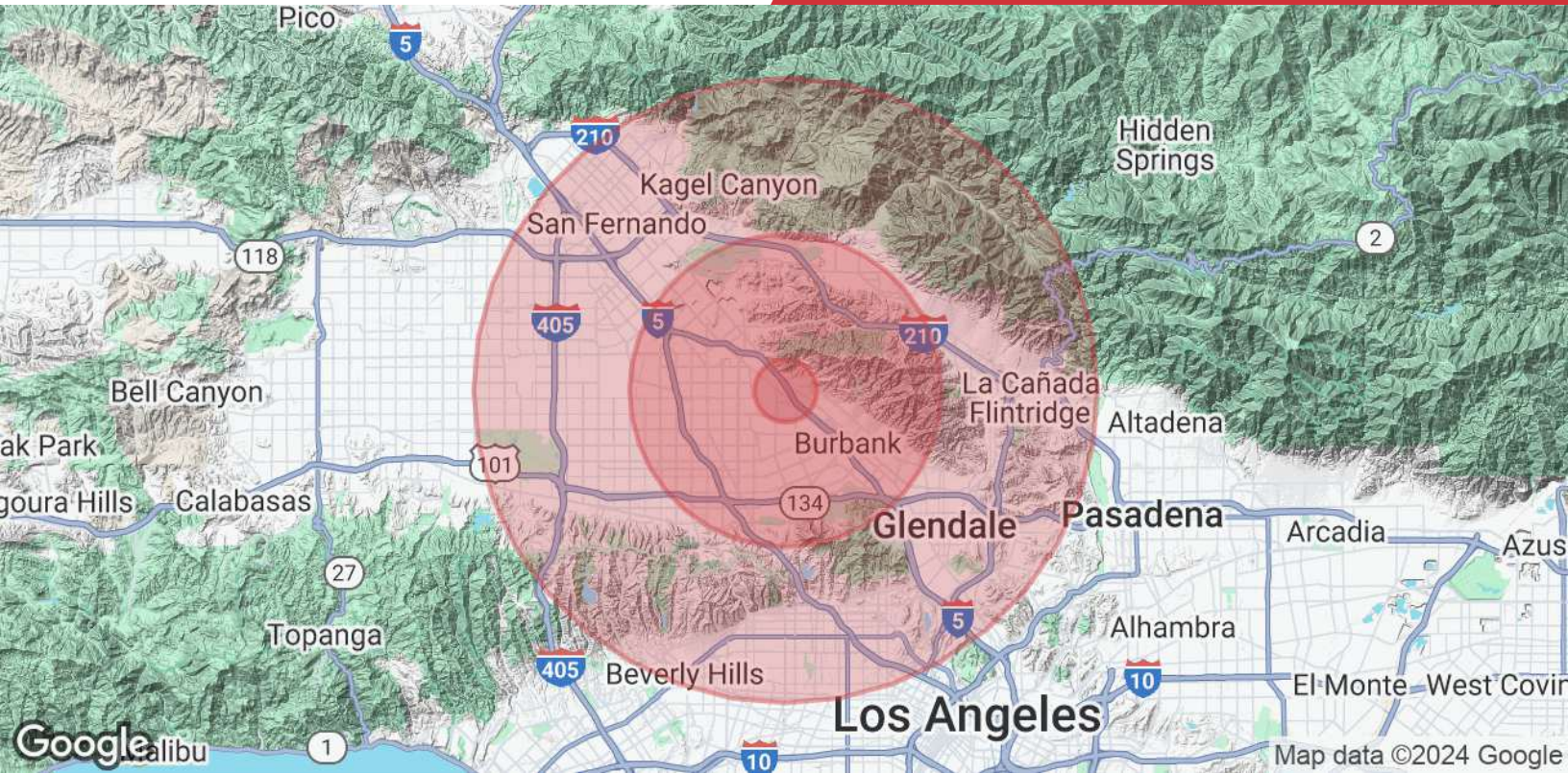
For Lease  
19,916 SF | \$1.70 SF/month  
Industrial Space



No warranty, express or implied, is made as to the accuracy of the information contained herein. This information is submitted subject to errors, omissions, change of price, rental or other conditions, withdrawal without notice, and is subject to any special listing conditions imposed by our principals. Cooperating brokers, buyers, tenants and other parties who receive this document should not rely on it, but should use it as a starting point of analysis, and should independently confirm the accuracy of the information contained herein through a due diligence review of the books, records, files and documents that constitute reliable sources of the information described herein. Logos are for identification purposes only and may be trademarks of their respective companies. NAI Capital Commercial, Inc. CAL DRE Lic. #02130474

225 S. Lake Avenue, Suite M270  
Pasadena, CA 91101  
626 564 4800 tel  
[naicapital.com](http://naicapital.com)





Population	1 Mile	5 Miles	10 Miles
<b>Total Population</b>	15,240	461,447	1,874,426
<b>Average Age</b>	40.4	39.2	38.5
<b>Average Age (Male)</b>	40.4	38.0	37.7
<b>Average Age (Female)</b>	40.8	40.2	39.4
Households & Income	1 Mile	5 Miles	10 Miles
<b>Total Households</b>	5,444	184,299	758,799
<b># of Persons per HH</b>	2.8	2.5	2.5
<b>Average HH Income</b>	\$108,388	\$90,362	\$99,142
<b>Average House Value</b>	\$674,035	\$634,872	\$708,066

2020 American Community Survey (ACS)