

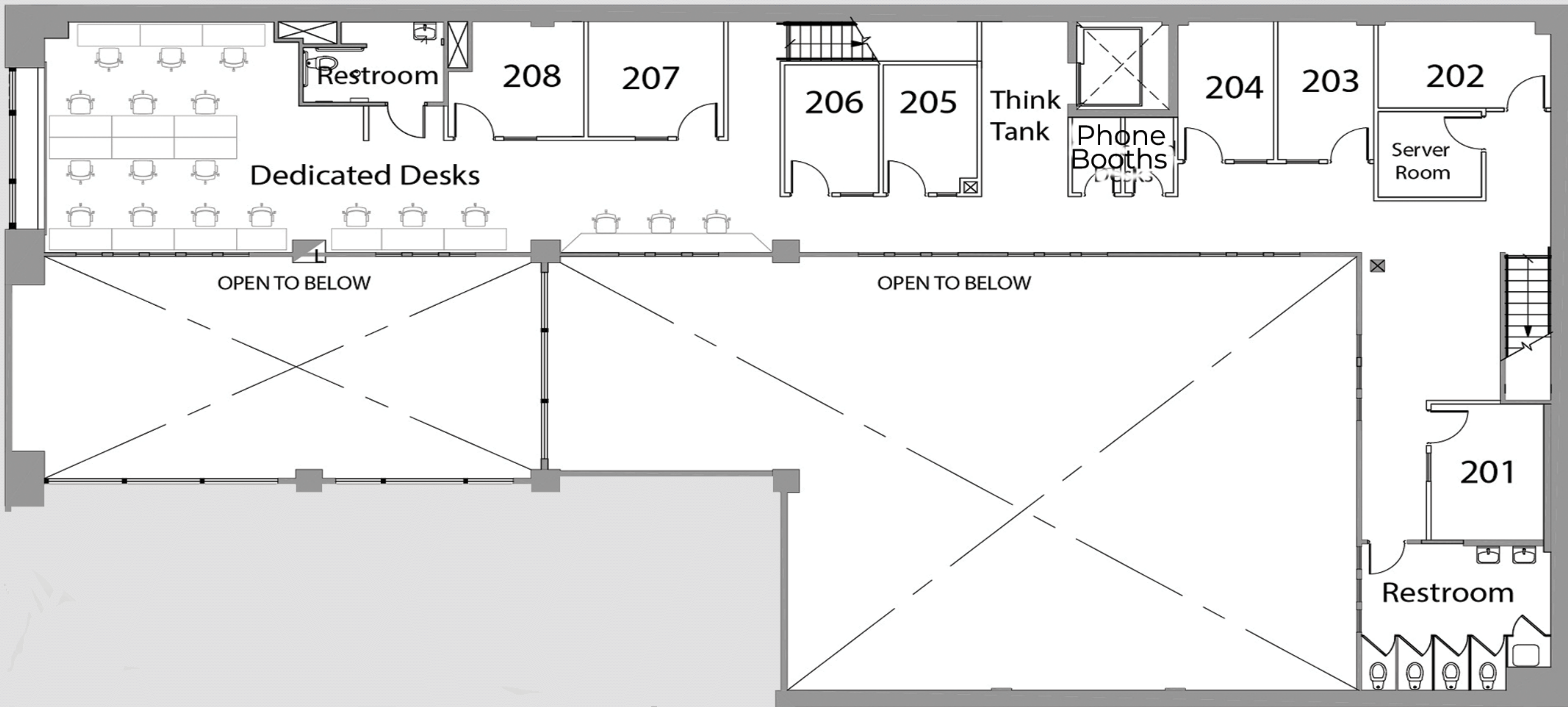
# Center Plan

# NextSpace Berkeley

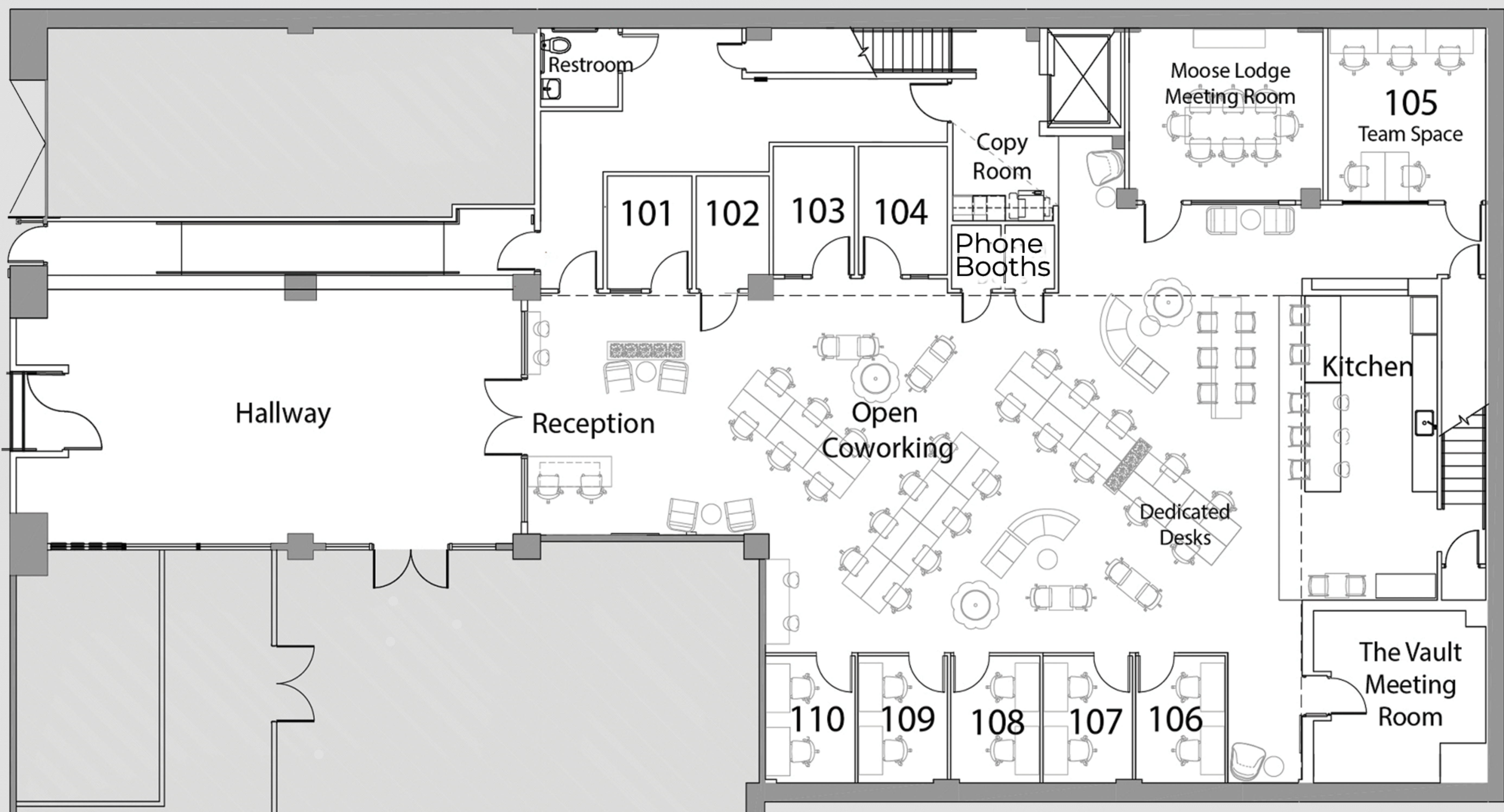


2081 Center Street  
 Berkeley, CA 94704  
 Phone: (510) 990-0500  
[www.PacificWorkplaces.com](http://www.PacificWorkplaces.com)

## 2nd Floor



## 1st Floor



Itemized service charges and bundled packages are per person, per month, unless indicated otherwise. All employees of each company must be on the same package.

Monthly Charges	Itemized Charges	Discounted Service Packages		
		Kick Starter Package	Standard Package (Most popular)	Full Support Package (All inclusive)

### Bundled Packages

Each User		\$149	\$249	\$349
Package Discount Value		\$168 savings	\$497 savings	\$883 savings

### Individual Services & Charges

<b>Standard Office Furnishing</b> Comfortable, functional, and flexible	\$95/standard \$69/workstation	Workstation	Standard Office	Standard Office
<b>Beverage Service</b> Hot beverages and filtered water for you and your guests	\$19	Included	Included	Included
<b>1 Gig Network Usage &amp; Wireless Connectivity</b> (Fueled, Energized, or Turbo)	\$49 / \$79 / \$99	Fueled Included	Energized Included	Turbo Included
<b>Mail Service</b> We collect and distribute your mail during business hours	\$69	Included	Included	Included
<b>Digital Mail</b> Mail alerts/forwarding/scanning. We can forward, scan, or shred per your instructions. Charges for postage may apply.	\$49/month \$8/instance			Included
<b>Meeting Rooms</b> Day Office: Vault: Moose Lodge:	\$30/hr (1 credit) \$40/hr (2 credits) \$60/hr (3 credits)	First 6 Credits Free, then \$18 per credit	First 12 Credits Free, then \$18 per credit	First 24 Credits Free, then \$18 per credit
<b>Member Resources</b> Access to events, programming, and member portal	Priceless	Included	Included	Included
<b>Telephone System</b> Managed phone system and multi-featured phone set	\$49		Included	Included
<b>Local Phone Number</b> Access voicemail though email and receive as email attachment to your inbox	\$34		Included	Included
<b>Call Answering</b> Your calls are answered by our receptionist from 8:30am – 5:00pm PT – includes phone number	\$69		Included	Included
<b>Call Patching</b> Your call is transferred to any phone number in the U.S. according to your instructions	\$9		Included	Included
<b>Call Screening</b> Your calls are announced allowing you to choose which calls to accept. Must also have Call Patching.	\$19		Included	Included
<b>eFax</b> Receive faxes as email attachments to your inbox	\$12.95			Included
<b>Coast-to-Coast Call Answering</b> Extended live answering from 5:30am – 8:30am PT	\$19			Included
<b>Unlimited Long Distance</b> Unlimited throughout the USA	\$39			Included
<b>Black &amp; White Copying / Printing</b>	\$0.09/page			200 Included
<b>Color Copying / Printing</b>	\$0.39/page			200 Included
<b>Scan to Email</b>	\$0.04/page			Unlimited
<b>Business Support</b> Copying, catering arrangements, etc.	\$38/hr			
<b>IT Services</b> Remote Desktop, LAN, WAN, VLAN, VPN, and more	Starting at \$149/hr			

## Office Monthly Charge

NextSpace Powered by Pacific Workplaces provides turnkey, fully serviced, on-demand offices with the infrastructure, technology, and support you need. You focus on your business, and we do the rest. You will have access to all the support resources you need on a cost-effective and pay-as-you-go basis. Cost-effective because you are sharing an infrastructure with many other tenants without waste, paying only a fraction of the cost necessary to acquire and implement these services. Pay-as-you-go, because you only pay for the services you use. In other words, we offer a unique Workplace-as-a-Service™ environment!

Rent charges vary from location to location depending upon size and term length, but always include:

- ✓ Professional business address
- ✓ 24/7 Access
- ✓ Janitorial Services
- ✓ Mail Services
- ✓ All utilities
- ✓ Café/Lounge with refrigerator, microwave, and dishwasher
- ✓ Member resources including community events and access to member portal
- ✓ Friendly onsite staff to assist you with administrative and support needs
- ✓ Access to a regional network of Pacific Workplaces locations

## Installation & Set Up Charges

Installation Charges	Itemized Charges	Discounted Packages		
		Kick Starter Package	Standard Package	Full Support Package

### Bundled Service Packages

Per User Installation		\$99	\$199	\$199
-----------------------	--	------	-------	-------

### Individual Services & Charges

Service	Itemized Charge	Kick Starter Package	Standard Package	Full Support Package
Mail Installation	\$99	Included	Included	Included
Internet Connectivity	\$65/user	Included	Included	Included
Telephone Installation	\$100/phone	N/A	Included	Included
Office Set-up	\$95	Included	Included	Included

### Refundable Service Deposits

Deposit Type	Itemized Charge	Kick Starter Package	Standard Package	Full Support Package
Key Deposit	\$50/user	\$50/user	\$50/user	\$50/user
Service Deposit	1 month rent & fixed services	1 month rent & fixed services	1 month rent & fixed services	1 month rent & fixed services



All Services & Prices are Per User	Itemized Charges	Open Coworking Day Pass	Open Coworking 3-Day Plan	Open Coworking Monthly Plan	Dedicated Desk
		<b>\$25/day</b>	<b>\$49/mo</b>	<b>\$299/mo</b>	<b>\$375/mo</b>
<b>Blazing Internet</b> <i>Enterprise-grade internet in shared and private areas</i>	<i>Priceless!</i>	Included	Included	Included	Included
<b>Beverage Service</b> <i>The libations in our café – caffeinated or not</i>	<i>\$19/month</i>	Included	Included	Included	Included
<b>Meeting Room Discounts</b> <i>Overage use invoiced at \$18 per credit for all memberships.</i>			Included	Included	Included
<b>Member Resources</b> <i>Access to client portal and member events</i>	<i>Priceless!</i>		Included	Included	Included
<b>24/7 Access</b> <i>Anytime access to workstations and meeting rooms</i>	<i>\$49/month</i>			Included	Included
<b>6-Credits Free Access - Day Office/Meeting Rooms</b> <i>Day offices are 1 credit/hour. More credits required for larger meeting rooms. Used in 1 hour increments.</i>	<i>Value of \$108/month</i>			Included	Included
<b>Color Copying, Printing, &amp; Scanning</b> <i>Use our color copier and networked printer</i>	<i>Scan \$0.04 B/W \$0.09 Color \$0.39</i>			200 pages free/month	200 pages free/month
<b>Dedicated Desk Upgrade</b> <i>Your own dedicated coworking space</i>	<i>\$76/month</i>	N/A	N/A		Included
<b>PAC-Wide Coworking Pass</b> <i>Access coworking space during business hours at any PAC location. Add-on to Open Coworking Plan only. Included meeting room credits valid at home location.</i>	<i>Priceless!</i>	N/A	N/A	\$49/month add-on	N/A
<b>Mail Service*</b> <i>We collect your mail - Use our business address on your biz cards, web site, and marketing collateral</i>	<i>\$59/month</i>				
<b>Digital Mail**</b> <i>Mail Alerts, Forwarding &amp; Scanning. We can forward, scan, or shred per your instructions.</i>	<i>\$49/month or \$8 per instance</i>				
<b>Package Notification</b> <i>You are notified of courier items when they are delivered</i>	<i>\$6.00 per instance</i>				
<b>20-Credit Bundle***</b> <i>For access to day offices, meeting rooms and coworking space. Used in 1-hour increments.</i>	<i>\$149/month (\$109 add-on)</i>				
<b>Local Phone Number &amp; Unified Messaging</b> <i>Includes voicemail, 24/7 auto attendant, with voicemail sent as WAV email attachment</i>	<i>\$34/month</i>				
<b>Personalized Call Answering</b> <i>Your calls are answered by our receptionist according to your specifications from 8:30 AM to 5:00 PM PT</i>	<i>\$69/month</i>				
<b>Coast-to-Coast Call Answering</b> <i>Extended live answering from 5:30 AM to 5:00 PM PT</i>	<i>\$19/month</i>				
<b>Call Patching</b> <i>Your call is transferred to any phone number in the U.S. according to your instructions</i>	<i>\$9/month</i>				
<b>Call Screening</b> <i>Calls are announced. You to choose which calls to accept. Must also have Call Patching.</i>	<i>\$19/month</i>				
<b>One Time Set-up Fee</b>		<b>\$0</b>	<b>\$19</b>	<b>\$99</b>	<b>\$99</b>

\* Includes one company name. Additional company requires separate plans. Additional DBA \$29/mo.

\*\* Additional charges, such as postage, may apply. Please see our full Administrative Services Price List.

\*\*\*Minimum 3-month commitment.



	Itemized Charges	Mail Plan	On-The-Go Office	V-Office Part-Time Office	V-Office Plus Part-Time Office
<b>All Services &amp; Prices are Per User*</b>		<b>\$69/mo</b>	<b>\$129/mo</b>	<b>\$209/mo</b>	<b>\$289/mo</b>
<b>Mail Service**</b> <i>We collect your mail - Use our business address on your biz cards, web site, and marketing collateral</i>	\$69/month	Included	Included	Included	Included
<b>Blazing Internet</b> <i>Enterprise-grade internet in shared and private areas</i>	Priceless	Included	Included	Included	Included
<b>Member Resources</b> <i>Access to client portal and member events</i>	Priceless	Included	Included	Included	Included
<b>Beverage Service</b> <i>The libations in our café – caffeinated or not</i>	\$19/month	Included	Included	Included	Included
<b>Meeting Room Discounts</b> <i>Coverage use invoiced at \$18 per credit for all memberships.</i>		Included	Included	Included	Included
<b>Package Notification</b> <i>You are notified of courier items when they are delivered</i>	\$6.00 per instance		Included	Included	Included
<b>Local Phone Number &amp; Unified Messaging</b> <i>Includes voicemail, 24/7 auto attendant, with voicemail sent as WAV email attachment</i>	\$34/month		Included	Included	Included
<b>Personalized Call Answering</b> <i>Your calls are answered by our receptionist according to your specifications from 8:30 AM to 5:00 PM PT</i>	\$69/month		Included	Included	Included
<b>20-Credit Bundle***</b> <i>For access to day offices, meeting rooms and coworking space. Used in 1-hour increments.</i>	\$149/month (\$109 add-on)			First 20 credits free/month	First 50 credits free/month
<b>Digital Mail****</b> <i>Mail Alerts, Forwarding &amp; Scanning. We can forward, scan, or shred per your instructions.</i>	\$49/month or \$8 per instance				Included
<b>Coast-to-Coast Call Answering</b> <i>Extended live answering from 5:30 AM to 5:00 PM PT</i>	\$19/month				Included
<b>Call Patching</b> <i>Your call is transferred to any phone number in the U.S. according to your instructions.</i>	\$9/month				Included
<b>Call Screening</b> <i>Calls are announced. You to choose which calls to accept. Must also have Call Patching.</i>	\$19/month				Included
<b>24/7 Access</b> <i>Anytime access to workstations and meeting rooms</i>	\$49/month				Included
<b>Color Copying, Printing, &amp; Scanning</b> <i>Use our color copier and networked printer</i>	Scan \$0.04 B/W \$0.09 Color \$0.39				200 pages free/month
<b>Online Business Listing</b> <i>Add-on monthly charge to include 20-hours/month for part-time day office, directory listing, and unique suite number.</i>	Mail Plan: \$199 V-Office: \$49 VO Plus \$29				
<b>Portable DID</b> <i>Keep your current or Pac-issued phone number</i>	\$9.95/month				
<b>One Time Set-up Fee</b>	<b>\$99</b>	<b>\$99</b>	<b>\$99</b>	<b>\$99</b>	<b>\$99</b>

\*Ask us about rates for additional users.

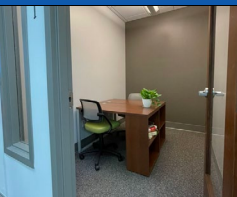

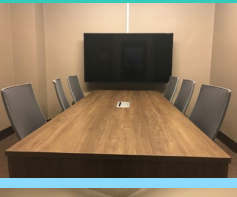

\*\*Includes one company name. Additional company requires separate plans. Additional DBA \$29/mo.

\*\*\*Requires 3-month commitment.

\*\*\*\*Additional charges, such as postage, may apply. Please see our full Administrative Services Price List.

[www.PacificWorkplaces.com](http://www.PacificWorkplaces.com)



		Rates	Capacity
	Guest Day Office	\$30/hr 1 credit*/hr	2 seats
	Open Coworking	\$25/day 2 credits*/day	48 seats
	The Vault Meeting Room	\$40/hr 2 credits*/hr	6 seats
	Moose Lodge Meeting Room	\$60/hr 3 credits*/hr	8 seats

**SPECIAL DISCOUNT**

**MONTHLY CONTRACT MEMBERS**

*Overage use invoiced at \$18 per credit for all memberships.*

Pacific Touchdown Members get access to all PAC locations!

**PACIFIC WORKPLACES**

Jenn Ribero  
Your Company Name  
User CODE: CTVI PWR RIBE



Ask us how to add-on today!

## Got The Need For Speed?

We provide fiber optic speeds up to 1 Gbps in most locations for seamless streaming and downloading!

We offer just the right speed to fit your needs. See our internet options below.

### Fueled

100 Mbps\*

\$49/mo per user



- Good for light activities such as checking email and web browsing
- Supports downloads of small to medium-sized files

### Energized

150 Mbps\*

\$79/mo per user



- Supports internet client-server applications, webinars, light streaming of audio/video
- VoIP Traffic (i.e. Skype)
- Heavy usage of Software-as-a-Service (SaaS) tools such as Salesforce CRM or Google Apps

### Turbo

200 Mbps\*

\$99/mo per user



- Frequent usage of collaboration & screen sharing services (Zoom & GoTo Meeting)
- Large file transfers, heavy streaming of audio, and medium usage of HD Video Conferencing
- Connecting to your Corporate HQ using VPN (Virtual Private Network)
- Frequent usage of online back-up services and cloud storage
- Web and application development

## Need More Speed?

Upgrade to our Lightspeed or Warspeed Plans offering you up to 1 Gbps. Request a quote today!

# How Mobile Are You?

Pacific Network Access:

**With a PacificTouchdown Pass**  
Access 18 Pacific Workplaces locations  
in California, Arizona and Nevada

	 <b>Pacific 8</b>	 <b>Pacific 20</b>	 <b>Pacific 50</b>
What for?	<i>Entry Level Mobility</i>	<i>Occasional Business Travelers</i>	<i>Frequent Business Travelers</i>
Monthly Cost	\$89	\$199	\$349
Day Office, Coworking and Meeting Rooms	<b>8 Free hrs of Day Office or 8 credits per month<sup>1</sup></b>	<b>20 Free hrs of Day Office or 20 credits per month<sup>1</sup></b>	<b>50 Free hrs of Day Office or 50 credits per month<sup>1</sup></b>
Conference Room Overage	Invoiced at \$18/credit	Invoiced at \$18/credit	Invoiced at \$18/credit
Preferential Status	✓	✓	✓
Helpdesk	✓	✓	✓
Free Internet Access	✓	✓	✓
Beverage Service	✓	✓	✓
Access to Professional Support	✓	✓	✓

**Questions? Contact: [PacificTouchdown@PacificWorkplaces.com](mailto:PacificTouchdown@PacificWorkplaces.com)**

1. A credit system is used, whereby most day offices are worth 1 credit, medium sized rooms are 2 to 3 credits & large boardrooms and training rooms can be worth 4 credits or more. See website for details for each location.