

# 1813-1815 ADAMS MILL RD NW

Washington, DC 20009



## CREATIVE OFFICE SPACE IN THE HEART OF ADAMS MORGAN

- Features exposed brick walls, open ceilings, polished hardwood floors, and glass barn doors that create a stylish and inspiring work environment.
- Generous natural light pours in from large perimeter windows, complementing a flexible floorplan with private offices, open work areas, and breakout zones.
- Includes a modern kitchenette with cabinetry and sink, plus two private restrooms for added convenience and functionality.
- Equipped with HVAC, recessed and directional lighting, ready for immediate move-in.
- Dedicated street-level entrance with secure access and prominent signage opportunity to showcase your brand.
- Situated in one of DC's most energetic neighborhoods, steps from dining, coffee shops, retail, and transit options.

**Andrew Courembis**  
acourembis@klnb.com  
202-420-7766

1130 Connecticut Ave, NW, Suite 600  
Washington, DC 20036  
**klnb.com**

**klnb**

# 1813-1815 ADAMS MILL RD NW

Washington, DC 20009



MARKET AERIAL

Andrew Courembis  
acourembis@klnb.com  
202-420-7766

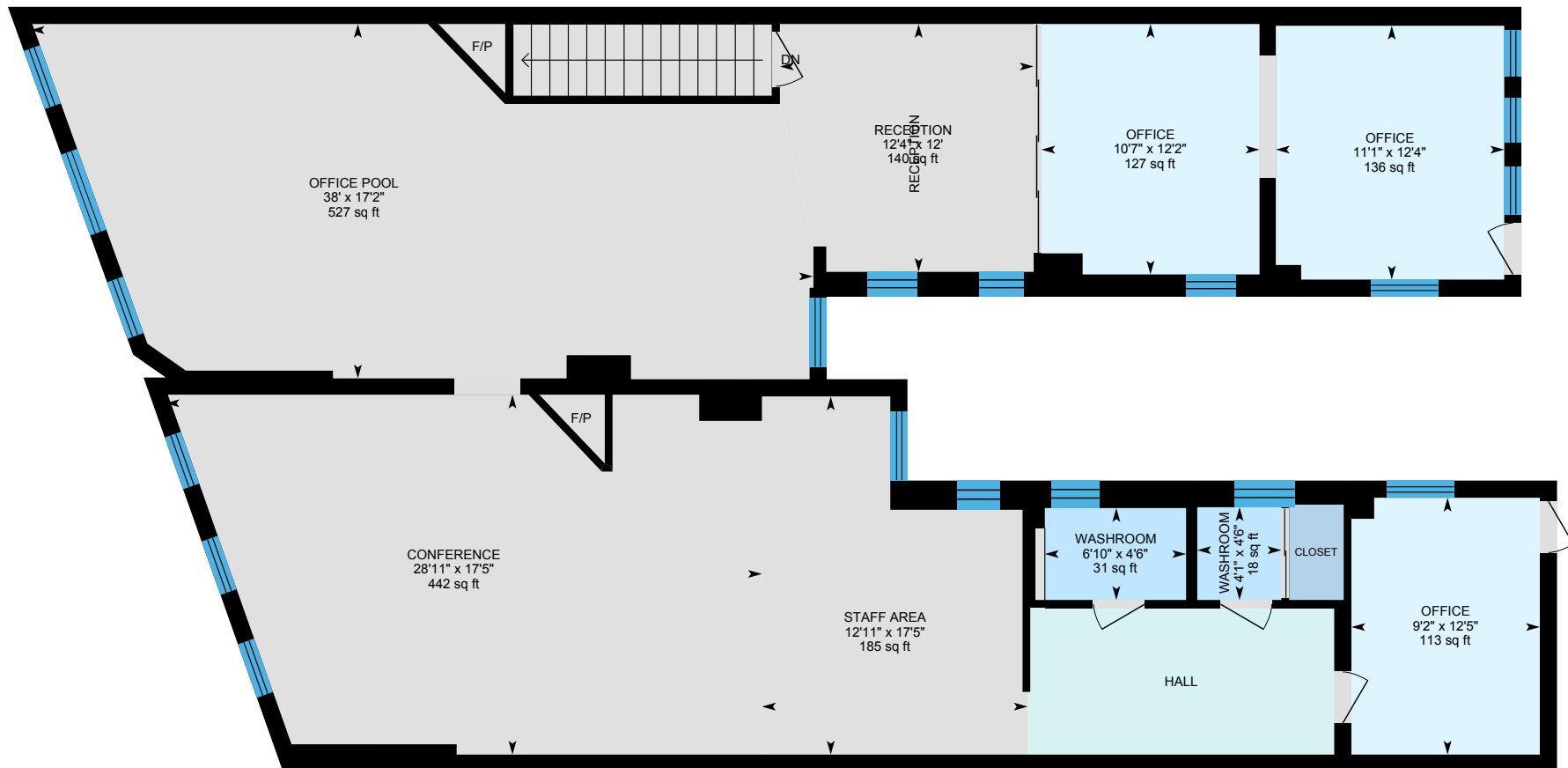
1130 Connecticut Ave, NW, Suite 600  
Washington, DC 20036  
klnb.com

klnb

# 1813-1815 ADAMS MILL RD NW

Washington, DC 20009

## FLOOR PLAN: 2,250 SF



**Andrew Courembis**  
acourembis@klnb.com  
202-420-7766

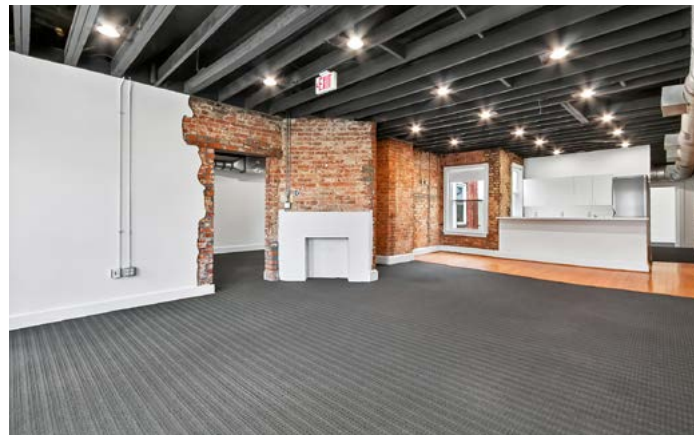
1130 Connecticut Ave, NW, Suite 600  
Washington, DC 20036  
**klnb.com**



# 1813-1815 ADAMS MILL RD NW

Washington, DC 20009

## PHOTOS



**Andrew Courembis**  
acourembis@klnb.com  
202-420-7766

1130 Connecticut Ave, NW, Suite 600  
Washington, DC 20036  
[klnb.com](http://klnb.com)

**klnb**

1813-1815 ADAMS MILL RD NW

Washington, DC 20009

CLICK TO VIEW PROPERTY WEBSITE

For More Information, Please Contact:

**Andrew Courembis**

acourembis@klnb.com

202-420-7766

1130 Connecticut Ave, NW, Suite 600

Washington, DC 20036

[klnb.com](http://klnb.com)



[instagram.com/klnbcre](https://www.instagram.com/klnbcre)



[linkedin.com/company/klnb](https://www.linkedin.com/company/klnb)



[facebook.com/KLNBCRE](https://www.facebook.com/KLNBCRE)

While we have no reason to doubt the accuracy of any of the information supplied, we cannot, and do not, guarantee its accuracy. All information should be independently verified prior to a purchase or lease of the property. We are not responsible for errors, omissions, misuse, or misinterpretation of information contained herein and make no warranty of any kind, express or implied, with respect to the property or any other matters.

**klnb**