



410.788.0100 | SJPI.COM

Greenleigh

6211 Greenleigh Avenue | Middle River, MD 21220

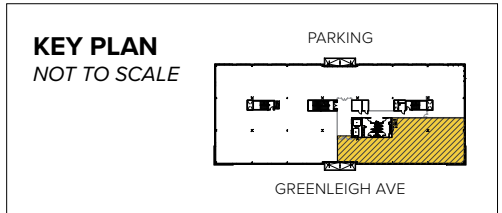
Suites 235–250 | Second Floor



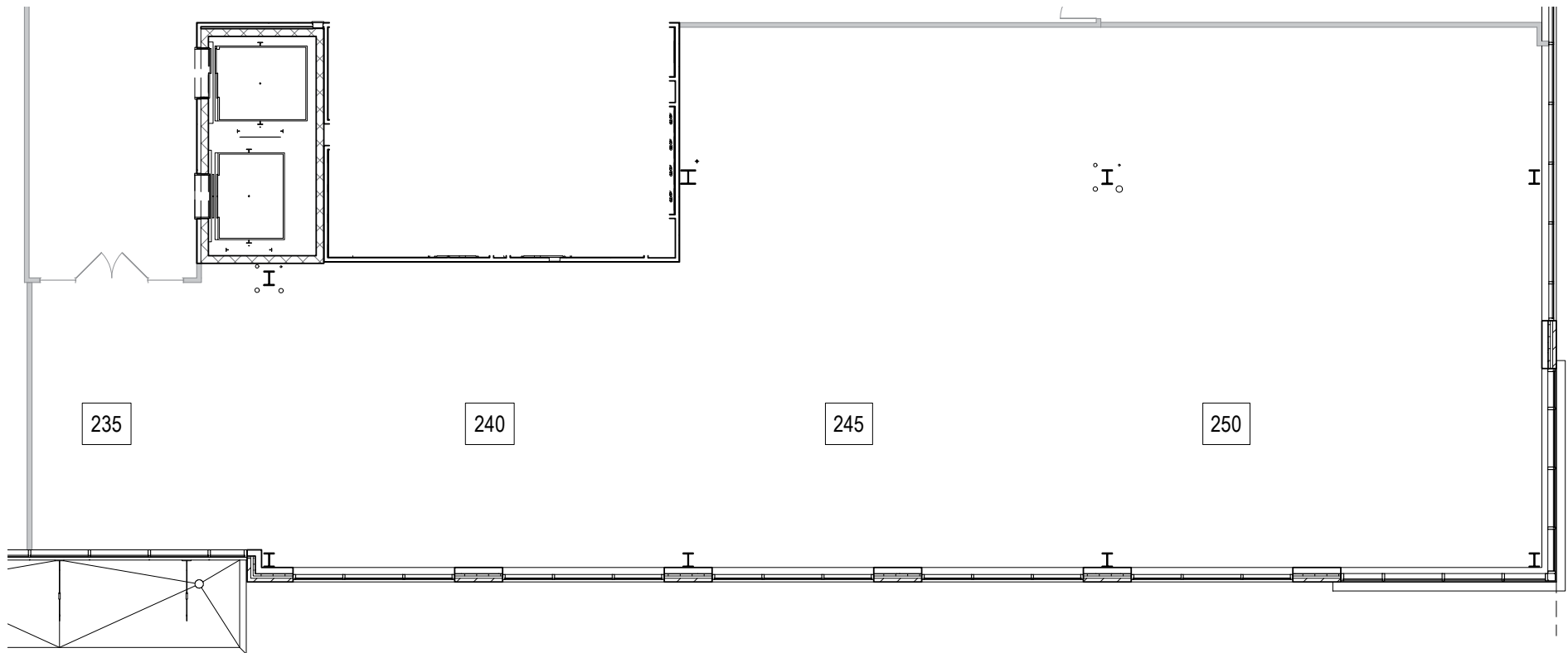
Total SF Available:

5,346 SF

*New LEED Gold Certified
four-story Class 'A' office space*



Note: This space plan is subject to existing field conditions. This drawing is proprietary and the exclusive property of St. John Properties, Inc. Any duplications, distribution, or other unauthorized use is strictly prohibited.





Multi-Story Office

Full-service Class 'A' office

Two Class 'A' multi-story office buildings reside at Greenleigh, totaling more than 170,000 square feet of space. Tenant sizes from 5,000 square feet to 99,504 square feet of space offer businesses headquarters-worthy location.

Multi-Story Office Space

Multi-Story Office Buildings

6201 Greenleigh Avenue	76,980 SF	LEED GOLD
6211 Greenleigh Avenue	99,504 SF	LEED GOLD

Multi-Story Office Specifications

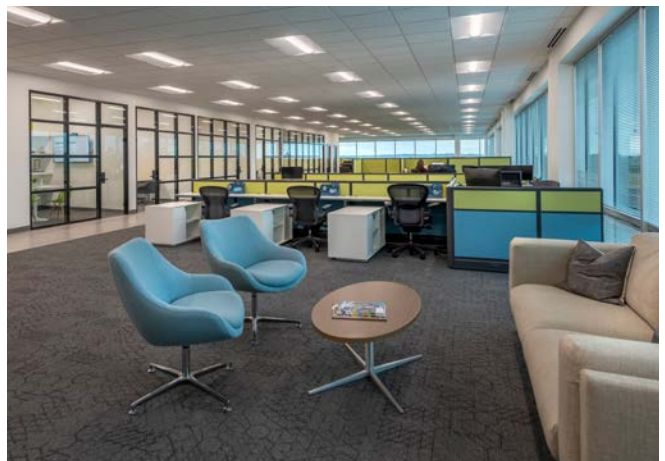
LEED	Gold Core & shell
Suite Sizes	5,000 up to 99,504 SF
Ceiling Height	10 ft. clear minimum
Parking	4 spaces per 1,000 SF
HVAC	Gas, VAV with zone control
Zoning	ML-IM-M43



6211 Greenleigh Avenue, class 'A' office lobby



6201 Greenleigh Avenue



Multi-story class 'A' office build-out



Scan with your mobile device to take a virtual tour, download floor plans and more!

Contact Us

For additional leasing information or to schedule a tour, contact:

OFFICE/FLEX SPACE:

Bill Jautze

Assistant Vice President,
Leasing

bjautze@sjpi.com
410.369.1213

Matt Lenihan

Senior Vice President,
Leasing

mlehan@sjpi.com
410.369.1202

RETAIL SPACE:

Bill Holzman

Vice President, Retail Leasing

bholzman@sjpi.com
410.369.1240

Eric Llewellyn

Retail Leasing Representative

ellewellyn@sjpi.com
443.464.1308

Corporate Headquarters:

2560 Lord Baltimore Drive, Baltimore, MD 21244
410.788.0100 | SJPI.COM

About St. John Properties

St. John Properties, Inc. is one of the nation's largest and most successful privately held commercial real estate firms. Founded in 1971, the vertically-integrated company develops, owns and manages office, flex/ research and development, warehouse, retail and residential space nationwide.

Connect with us [@stjohnprop](https://twitter.com/stjohnprop)



This information contained in this publication has been obtained from sources believed to be reliable. St. John Properties makes no guarantee, warranty or representation about this information. Any projections, opinions, assumptions or estimates used here are for example only and do not represent the current or future performance of the property. Interested parties should conduct an independent investigation to determine whether the property suits their needs. REV 01/23