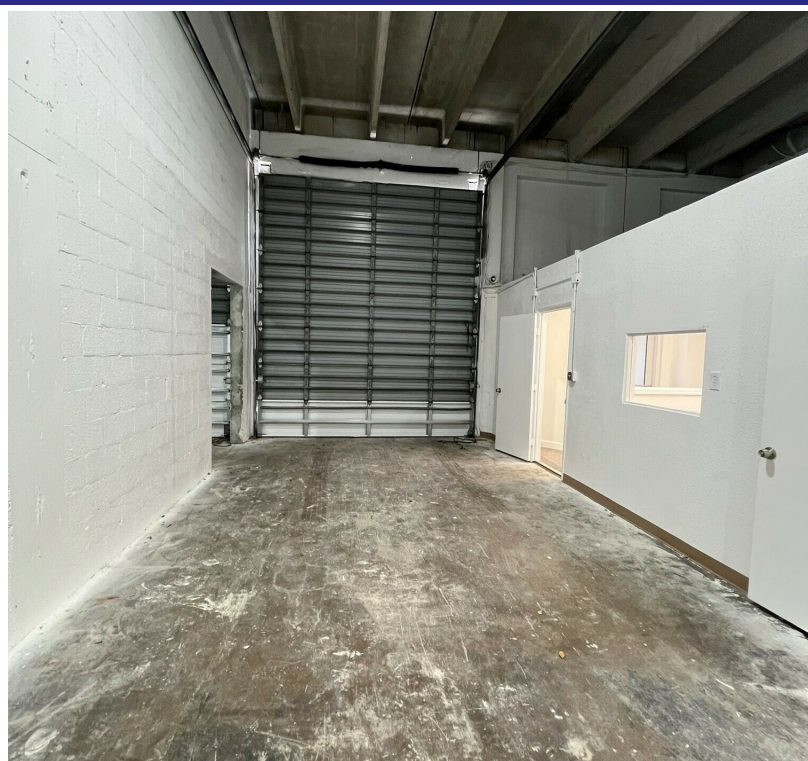


FOR LEASE

INDUSTRIAL PARK LAUDERHILL

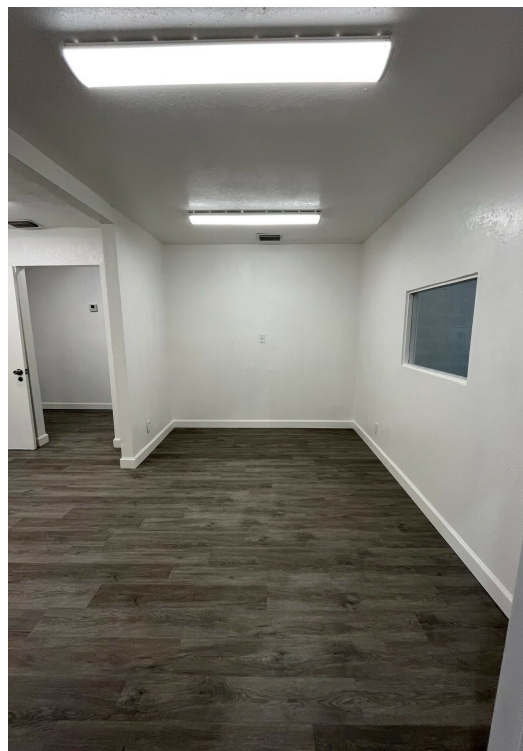
3700-3798 NW 16TH STREET, LAUDERHILL, FL 33311

3790 NW 16TH STREET



SPACE HIGHLIGHTS

- 1,530 SF newly renovated small bay warehouse
- Front grade level 12' x 14' overhead door
- 16' clear ceiling height
- 3 phase electric
- LED lighting
- 2 air conditioned offices (426 SF)
- Frontage on 38th Street



ANGIE WEAVER

Lauderdale Lakes and Lauderdale Manager
Direct: 954.485.9200 | Cell: 917.645.2339
angie@levyrai.com

HALEY PRESSER

Property Manager / Sales Associate
Direct: 954.485.9200 | Cell: 954.254.5396
Haley@levyrai.com



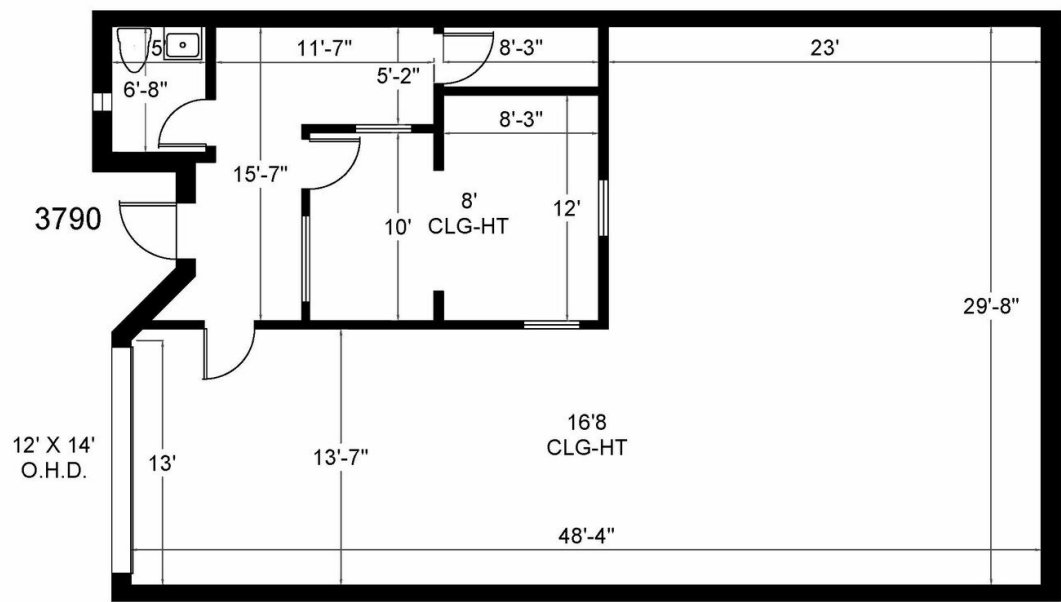
INDUSTRIAL PARK LAUDERHILL

3700-3798 NW 16TH STREET, LAUDERHILL, FL 33311

3790 NW 16TH STREET FLOOR PLAN

LAUDERHILL INDUSTRIAL PARK

3790 NW 16th Street | Lauderhill, FL 33311



Office - 426 SQ.FT.
Warehouse - 1,104 SQ.FT.

1,530 Rentable SQ. FT.
www.LevyRealtyAdvisors.com

ANGIE WEAVER
Lauderdale Lakes and Lauderhill Manager
Direct: 954.485.9200 | Cell: 917.645.2339
angie@levyrai.com

HALEY PRESSER
Property Manager / Sales Associate
Direct: 954.485.9200 | Cell: 954.254.5396
Haley@levyrai.com

