

NEW CONSTRUCTION MIXED-USE DEVELOPMENT **FOR LEASE**

TRG TRINITY REALTY GROUP | TRGCOS.COM | 518.458.7203 | 18 COMPUTER DRIVE EAST, STE 201, ALBANY, NY 12205



146 MARKETPLACE | HALFMOON, NY



146 MARKETPLACE

HIGHLIGHTS

- Dynamic Mixed-Use Development – 9 thoughtfully planned buildings offering a blend of residential, office, and retail spaces.
- Modern Office Hub – Buildings featuring 2-story office space.
- Luxury Apartments – Buildings 6-8 include 4-story residential complexes.
- Retail & Commercial Opportunities – Buildings 1-5 feature a mix of 1- and 4-story structures.
- Underground Parking
- Prime Clifton Park Location – Situated with excellent connectivity to major highways, retail hubs, and community amenities.

OFFERING INFO

Available Space:	Multiple
Parcel Size:	Multiple
Parking:	TBD
Rent:	TBD
Net:	TBD

DEMOGRAPHICS

	1 Mile	3 Miles	5 Miles
POPULATION:	5,292	35,496	69,088
HOUSEHOLDS	2,556	15,427	29,706
AVERAGE HH INCOME	\$127,727	\$147,002	\$150,172
DAYTIME POPULATION	7,982	24,127	36,617
BUSINESS ESTABLISHMENTS	613	1,502	2,195



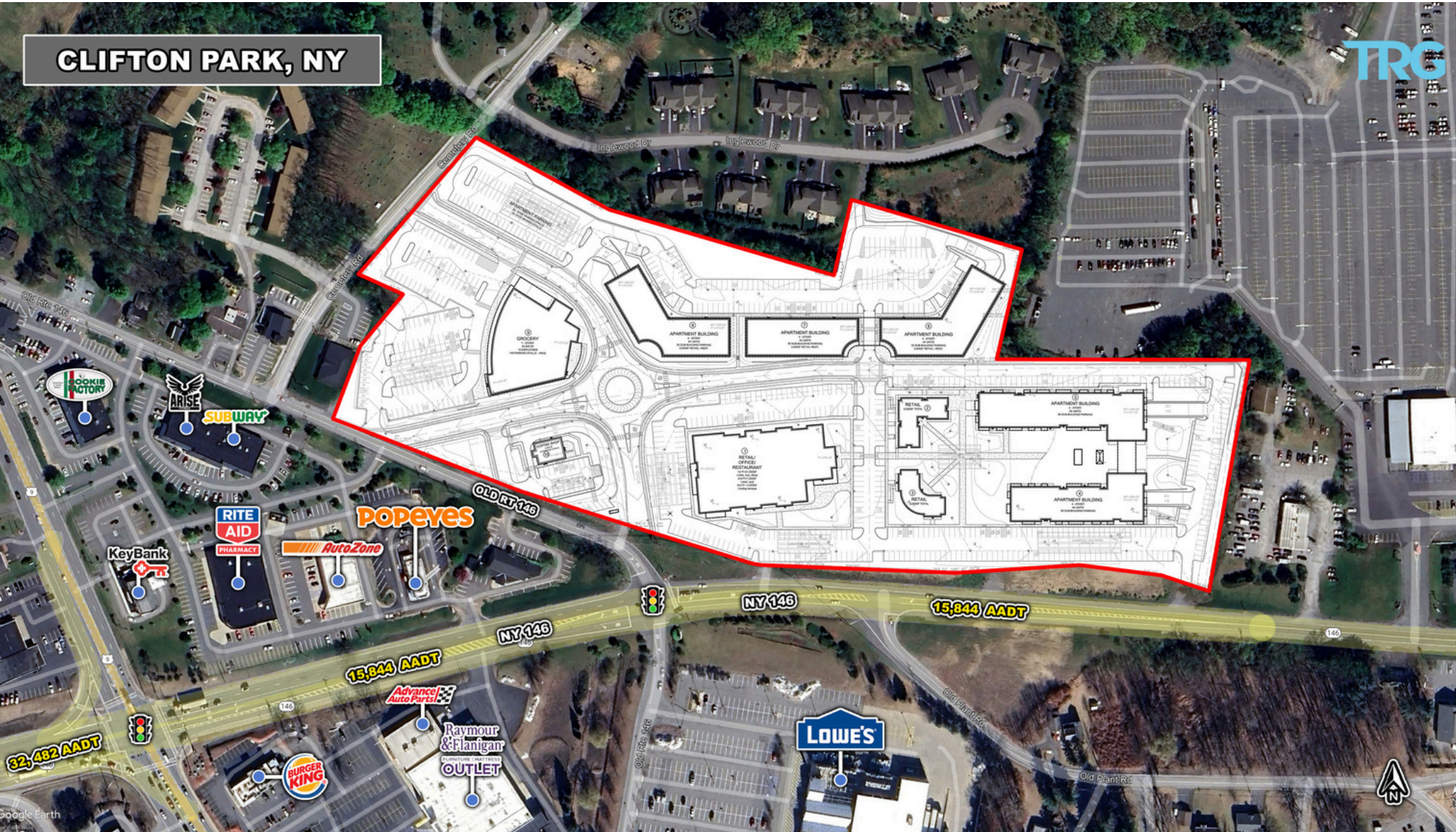
Area Retailers:

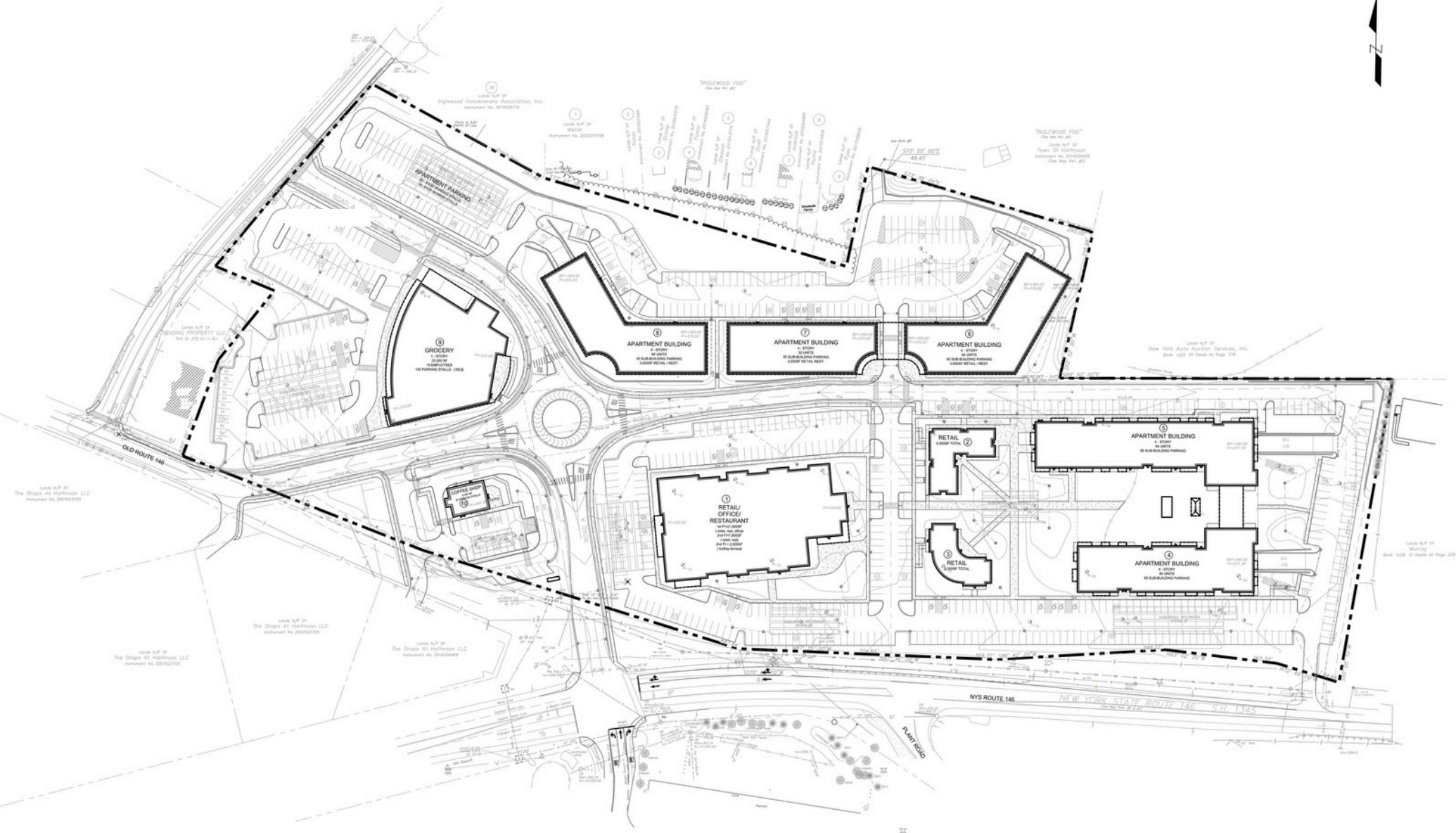


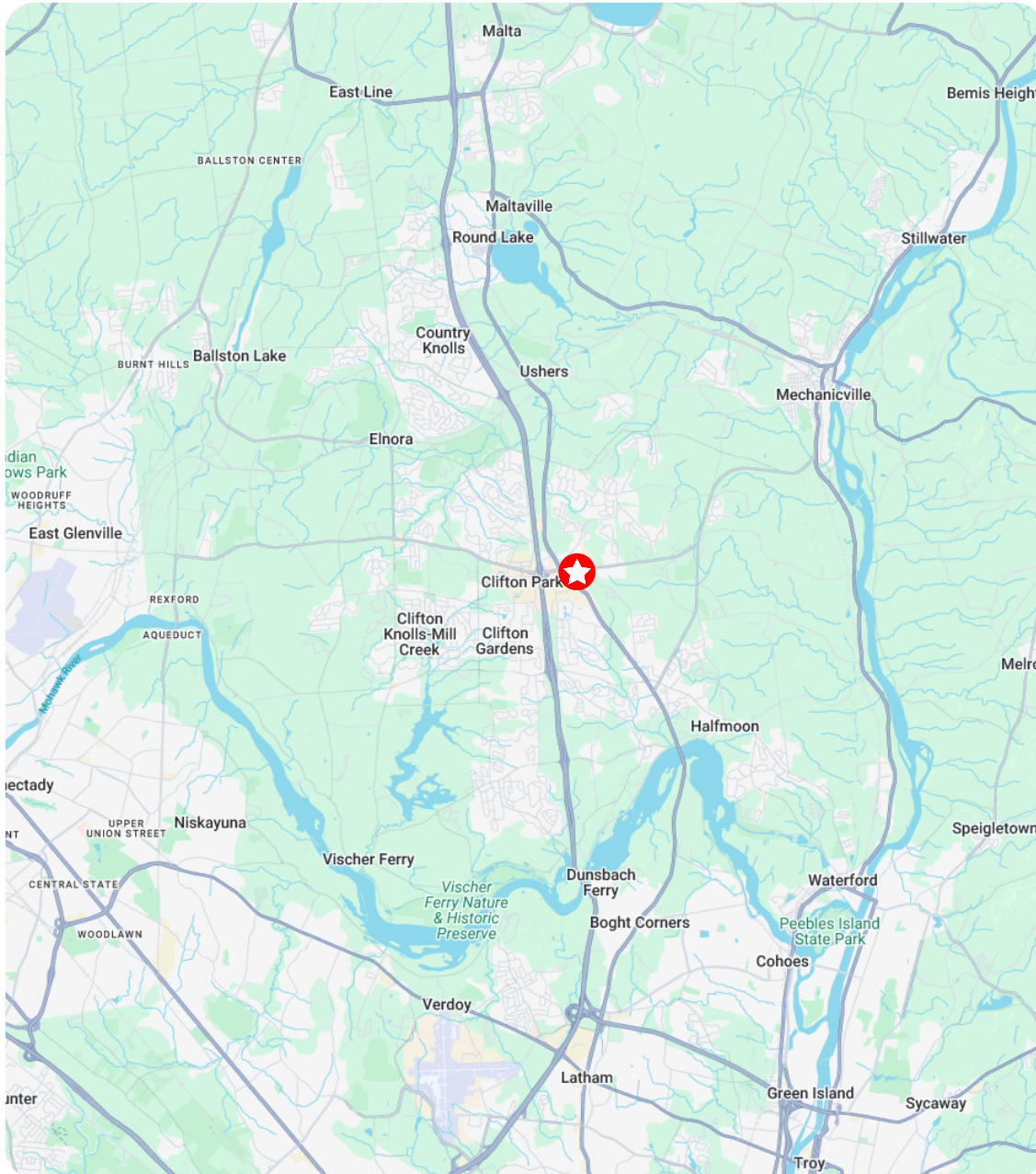
CLIFTON PARK, NY



CLIFTON PARK, NY







For all commercial real estate inquiries
please contact exclusive brokers:

Kevin Parisi

518.461.4234

kparisi@trgcos.com

Andrew Peckage

518.859.5005

apeckage@trgcos.com

Cameron Quinlan

518.396.9379

cquinlan@trgcos.com



Trinity Realty Group
18 Computer Drive East, Ste 201
Albany, NY 12205
518.458.7203
trgcos.com