



WASHINGTON SQUARE

625
NORTH WASHINGTON ST.

675
NORTH WASHINGTON ST.



625 & 675 North Washington Street
Alexandria, VA 22314

Chris Dyson / cdyson@lpc.com / 703.284.3633
Stoddie Nibley / snibley@lpc.com / 703.284.5884
Ashley Superville / asuperville@lpc.com / 703.284.3628

Lincoln



Property Highlights

- State-of-the-art conference center
- Excellent visibility on North Washington Street
- Lobby renovation underway
- On-site retailers include Trader Joe's, FedEx, and Capital Bikeshare, with numerous neighborhood shops & restaurants
- Easy access to Reagan National Airport and the Mount Vernon Trail
- Transportation provided to King Street and Braddock Metro Stations
- Abundant parking ratio of 3.0/ 1,000 SF
- Outdoor amenity space

Availabilities

SF

Lease Rate

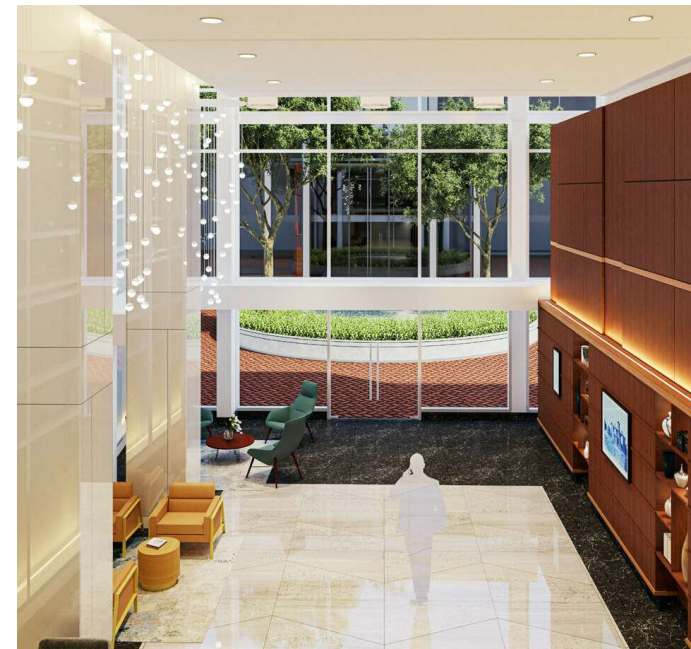
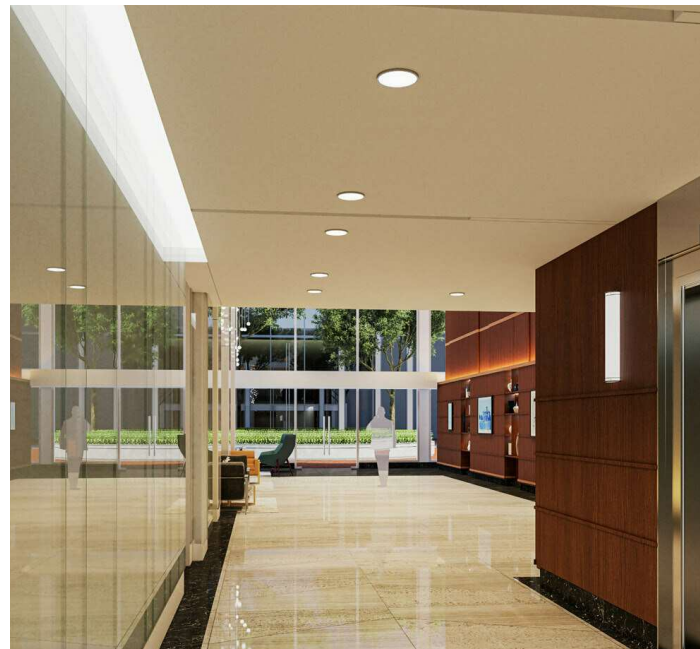
Date Available

WSQ 625: Suite 212	10,422 SF	Negotiable	Immediately
WSQ 625: Suite 304	3,336 SF	Negotiable	Immediately
WSQ 625: Suite 320	4,726 SF	Negotiable	Immediately
WSQ 675: Suite 200	5,000 - 12,397 SF	Negotiable	Immediately
WSQ 675: Suite 330	6,174 SF	Negotiable	Immediately
WSQ 675: Suite 400	6,770 SF	Negotiable	Immediately



WASHINGTON
SQUARE

Lobby Renovations Underway - Delivering May 2025





WASHINGTON
SQUARE

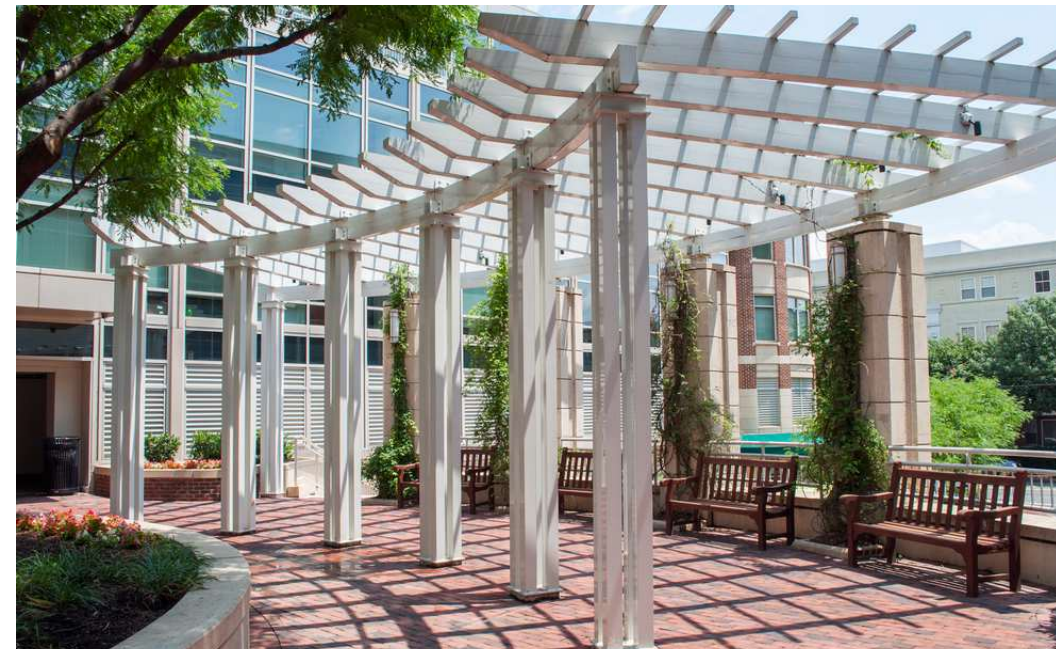
Conference Center

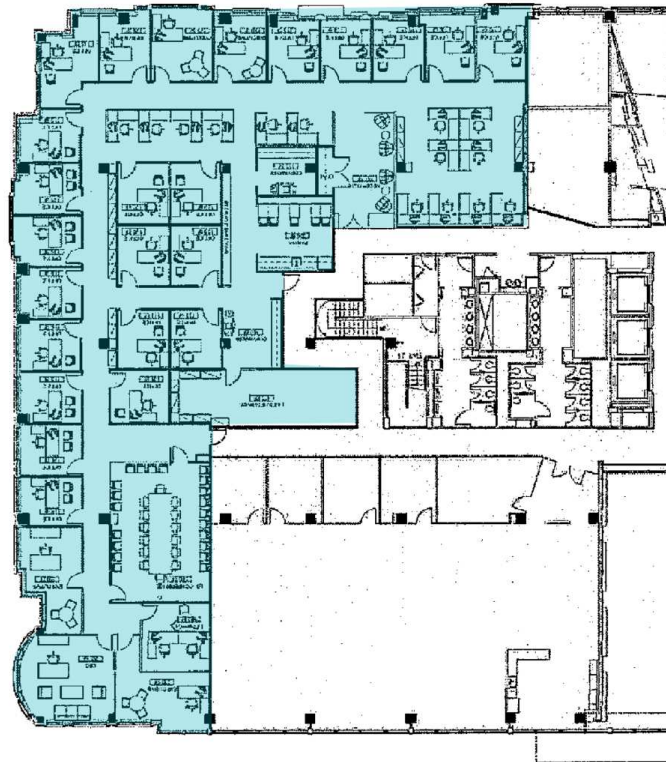




WASHINGTON
SQUARE

Activated Outdoor Space

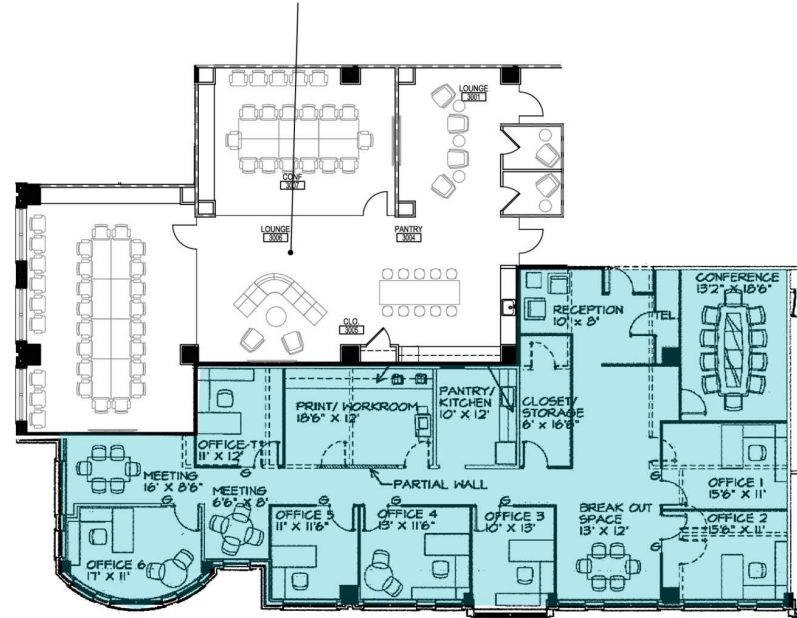




Suite	Size	Description
■ WSQ 625: Suite 212	10,422 SF	Available Immediately

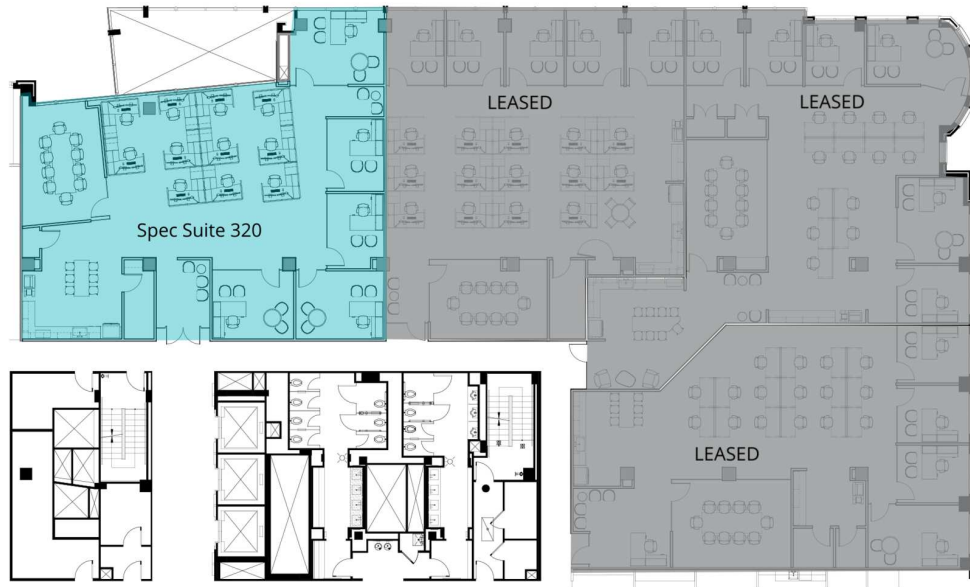


Conference Center

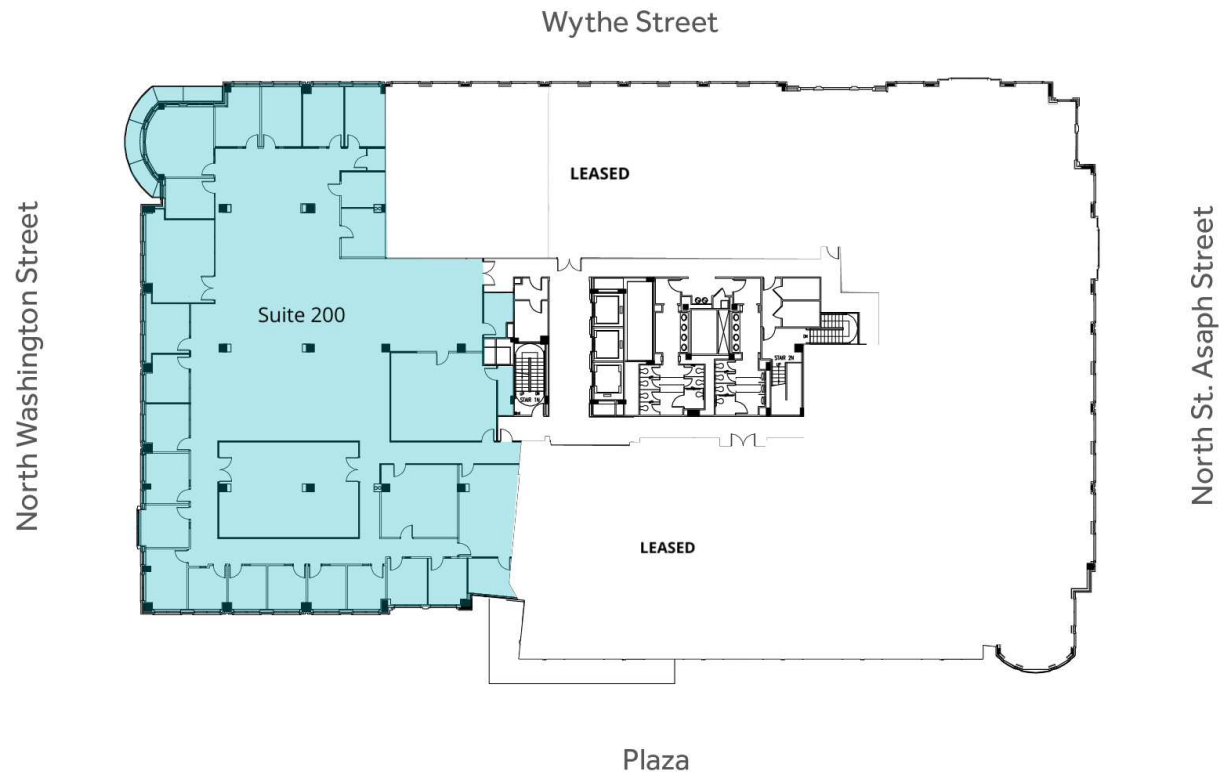


Suite 304

Suite	Size	Description
■ WSQ 625: Suite 304	3,336 SF	Available Immediately



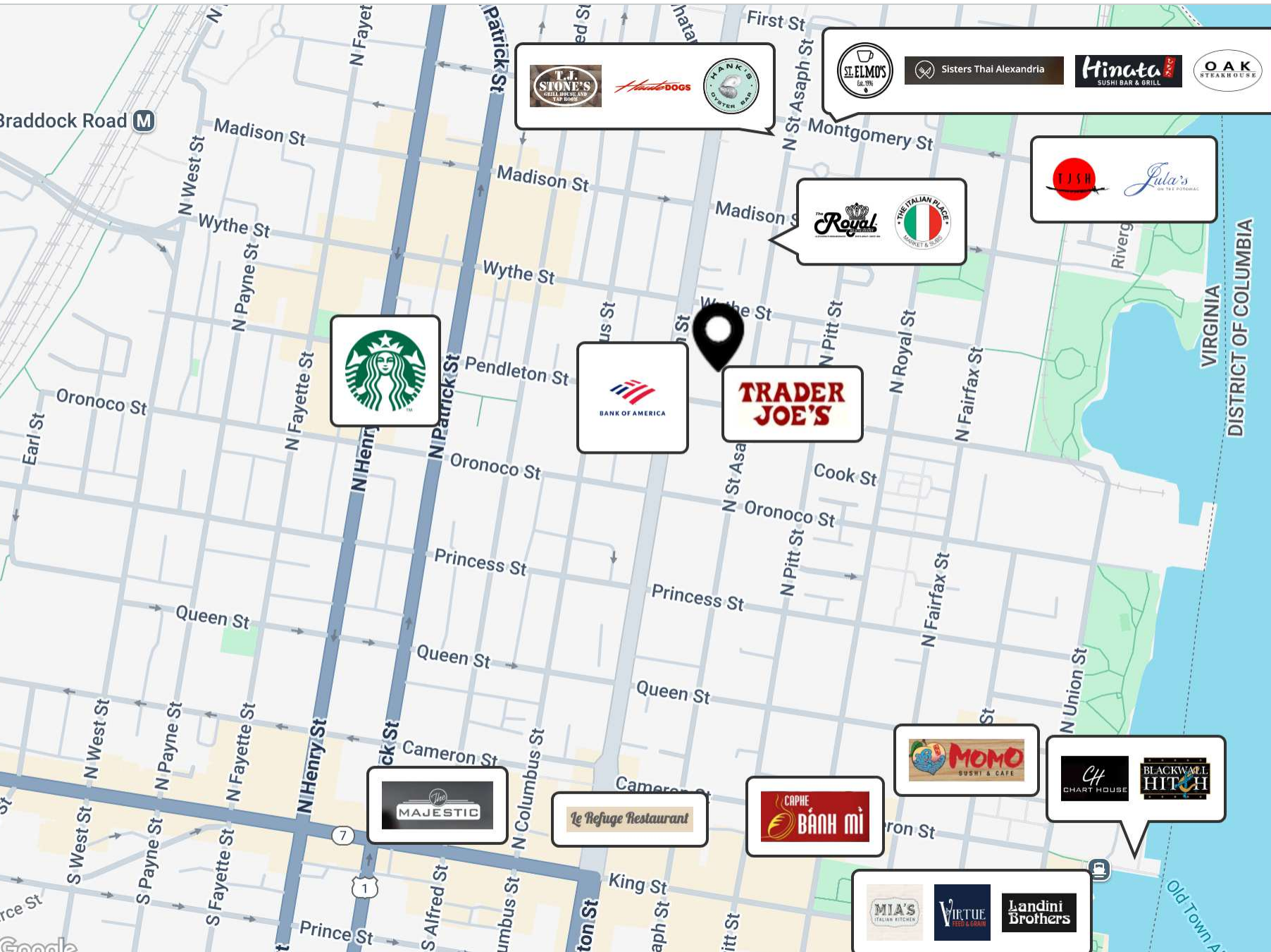
Suite	Size	Description	Virtual Tour
■ WSQ 625: Suite 320	4,726 SF	Shell Space Available	View Here



Suite	Size	Description
■ WSQ 675: Suite 200	5,000 - 12,397 SF	Immediately



Suite	Size	Description
■ WSQ 675: Suite 400	6,770 SF	Available Immediately





WASHINGTON
S Q U A R E

625 & 675 North Washington Street
Alexandria, VA 22314

Chris Dyson / cdyson@lpc.com / 703.284.3633

Stoddie Nibley / snibley@lpc.com / 703.284.5884

Ashley Superville / asuperville@lpc.com / 703.284.3628

Lincoln