

FOR LEASE

±30,000 SF Warehouse/Maintenance Facility
Situated on ±2.03 Acres

585 N. Michigan Avenue
Kenilworth, NJ



For further information please contact Exclusive Broker:

NAI DiLeo-Bram & Co.

Commercial Real Estate Services, Worldwide.

David Simon, SIOR
Chief Operating Officer

732 985 3000 ext. 220
dsimon@naidb.com

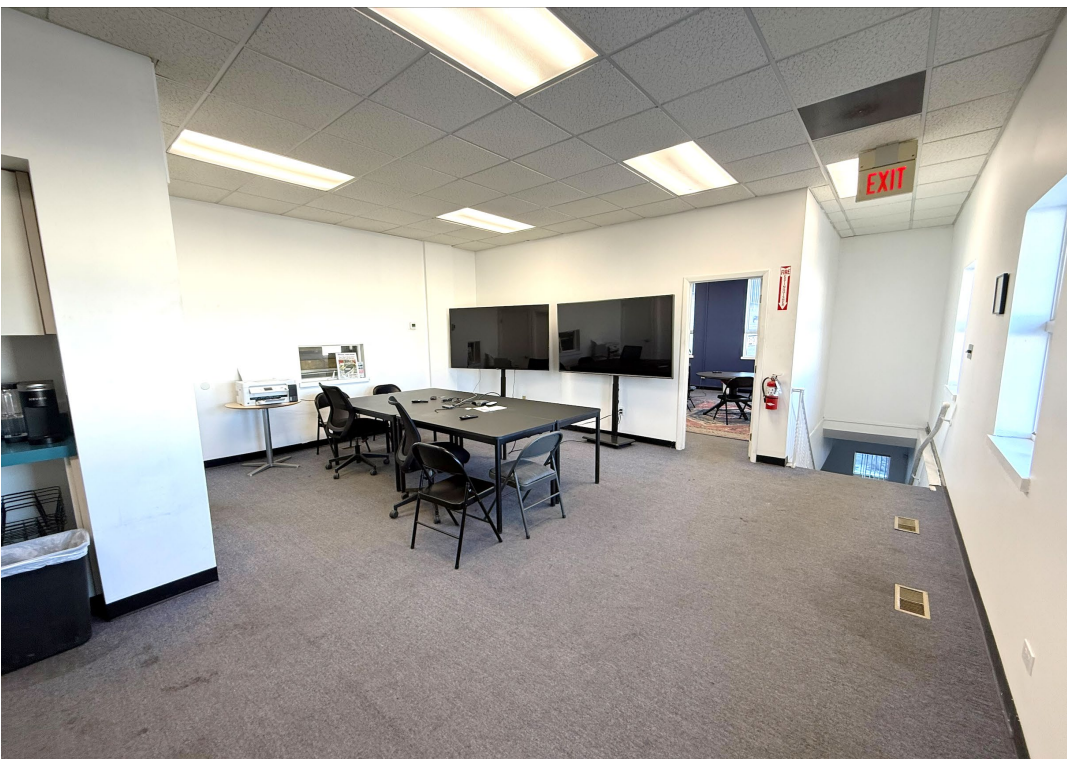
Kyle Gerace
Vice President

732 985 3000 ext. 229
kgerace@naidb.com

PROPERTY FEATURES

- ±30,000 sq. ft. warehouse/maintenance facility featuring ±25,000 sq. ft. of warehouse space and ±5,000 sq. ft. of office space
- Situated on ±2.03 acres
- Ample parking available
- 6 drive-in doors
- 17 ft. ceiling height
- Two 5-ton cranes
- Well positioned with quick access to NYC markets via the Holland or Lincoln Tunnel
- Located within close proximity to Exit 13A of the NJ Turnpike and Newark/Elizabeth Ports





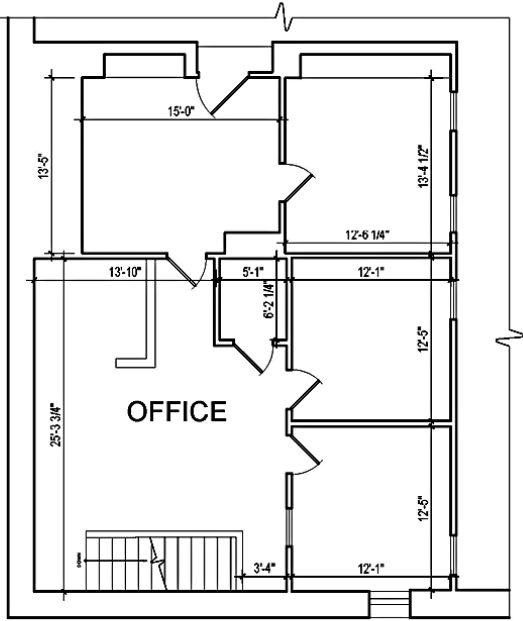
Finished Office Space



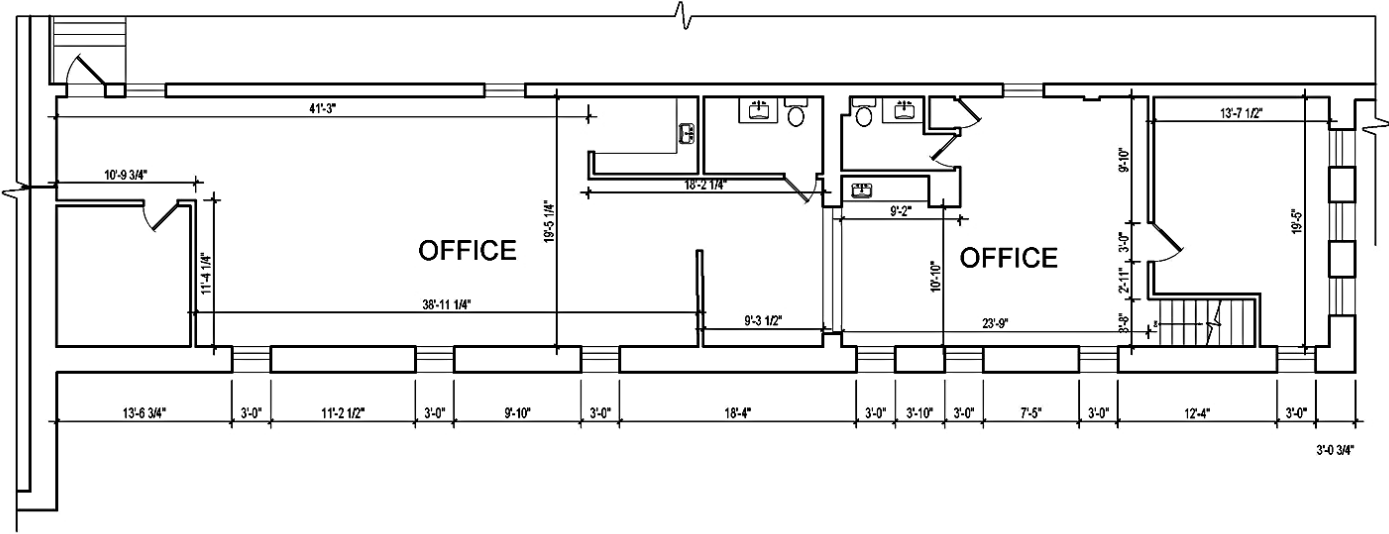
Two 5-Ton Cranes in Warehouse Space



SECOND FLOOR PLAN

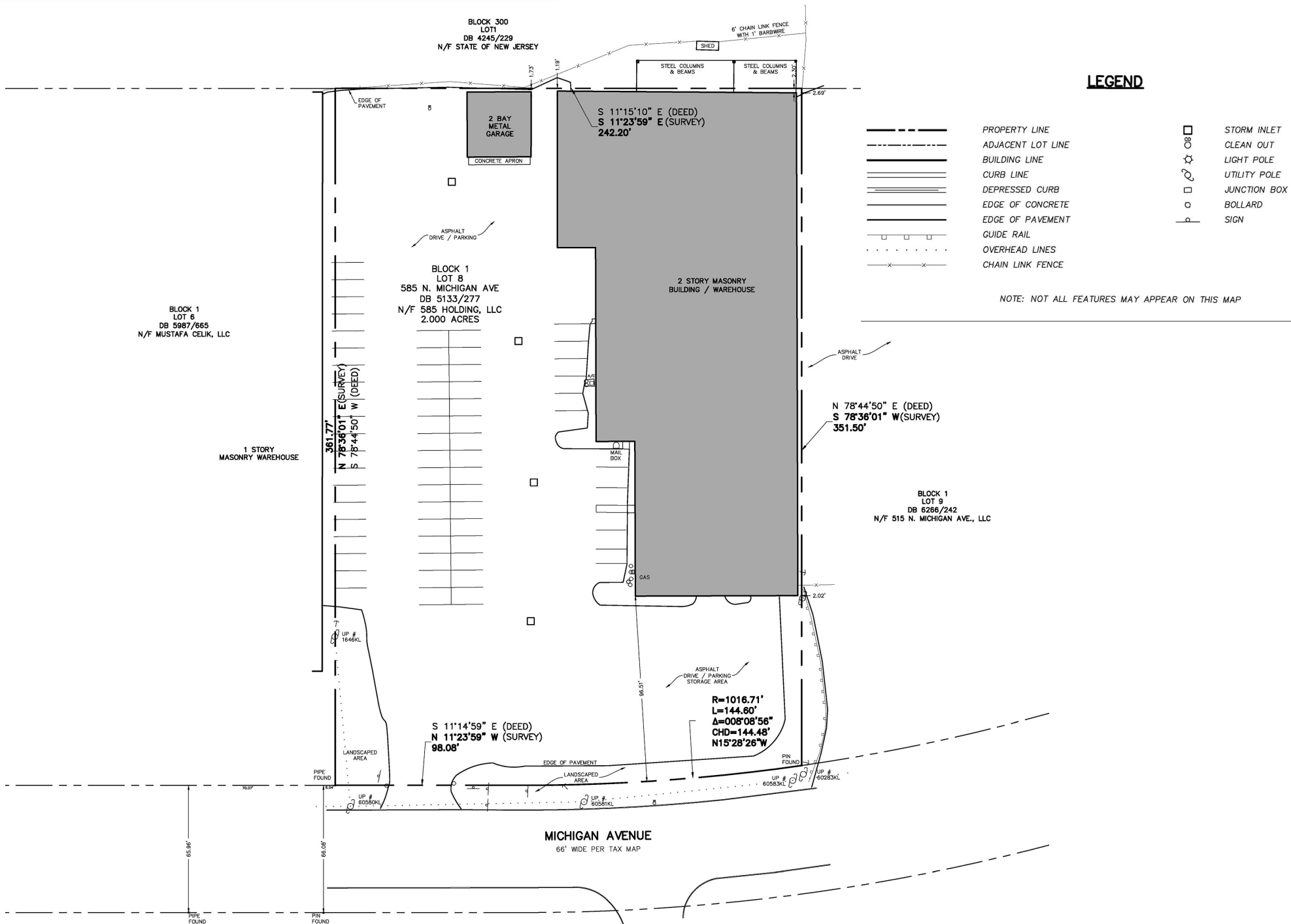


3 Second Floor Plan
A1.01



2 Second Floor Plan
A1.01

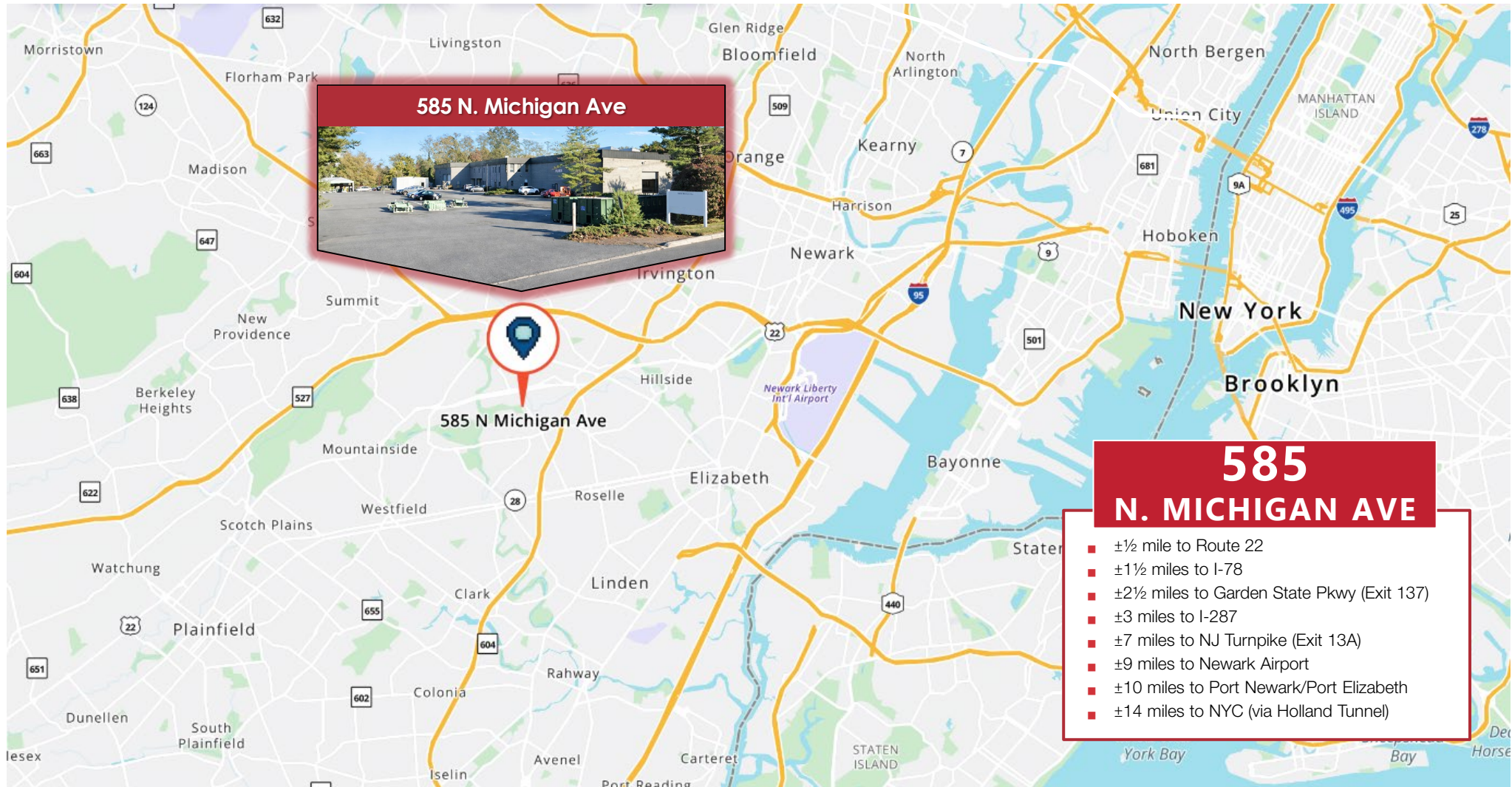
PROPERTY SURVEY



STRATEGICALLY LOCATED

NAI DiLeo-Bram & Co.

Commercial Real Estate Services, Worldwide.



For further information please contact Exclusive Broker:

90 Woodbridge Center Drive, Suite 160
Woodbridge, NJ 07095
732 985 3000 | naidb.com

David Simon, SIOR
Chief Operating Officer

Kyle Gerace
Vice President

732 985 3000 ext. 220
dsimon@naidb.com

732 985 3000 ext. 229
kgerace@naidb.com

The information contained herein has been given to us by the owner of the property or other sources we deem reliable. We have no reason to doubt its accuracy, but we do not guarantee it. All information should be verified prior to purchase or lease.