



FOR LEASE 18,271 SF

## MARINA WEST BUSINESS CENTER

13800 N.W. 2<sup>nd</sup> STREET  
SUNRISE, FLORIDA



CUSHMAN &  
WAKEFIELD

| E L I O N

# MARINA WEST BUSINESS CENTER

13800 N.W. 2<sup>nd</sup> Street | Sunrise, Florida

## Property Features

Space Available: **Suite 190A: 18,271 SF**

Office Area: 2,139 SF

Clear Height: 24'

29 Parking Spaces

One (1) Dock High Door, Plus 2 Knockout Panels

One (1) Drive-In Ramp

ESFR Fire Sprinklered

50' x 40' Column Spacing

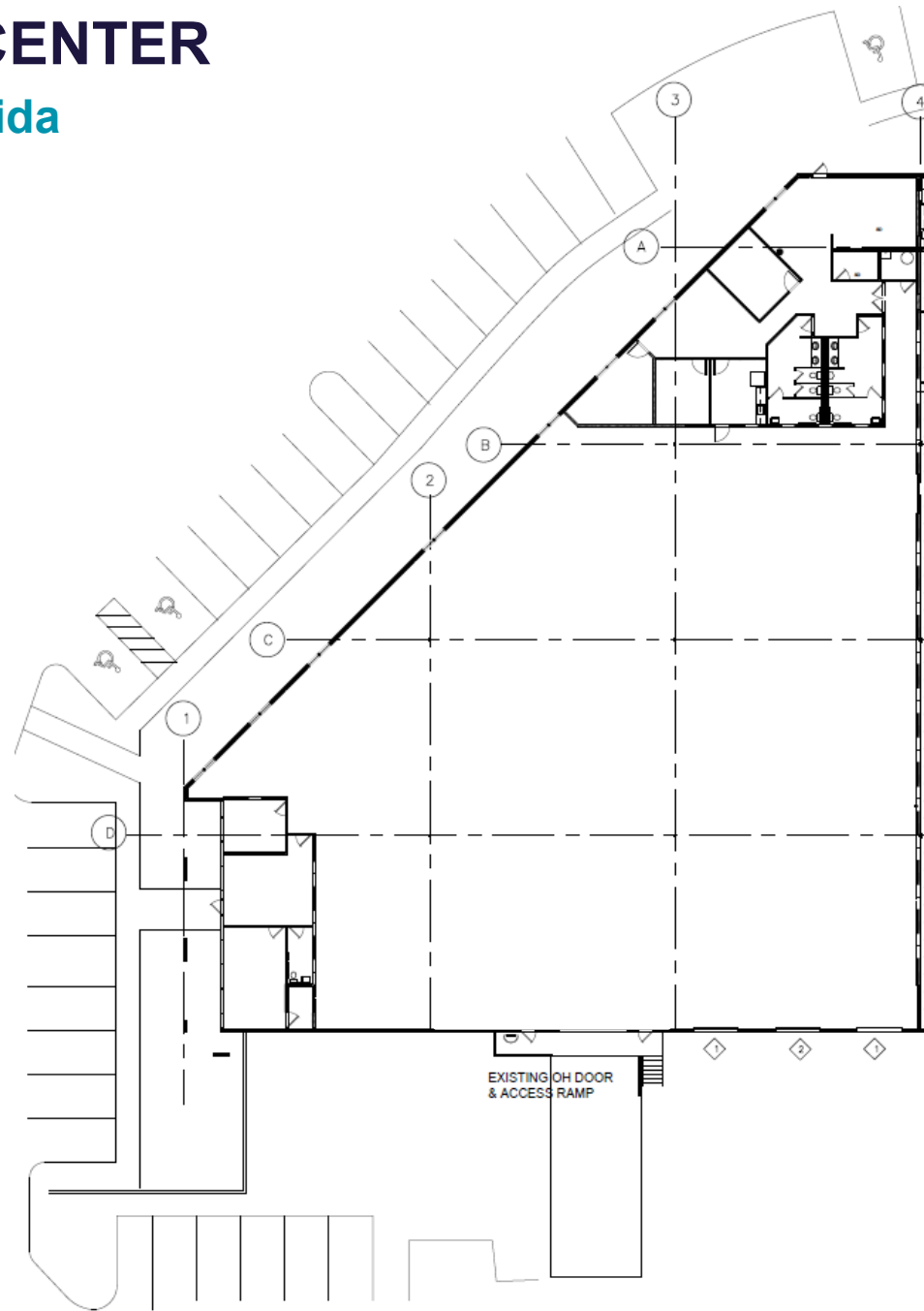
Tilt Wall Construction

LED Lighting Throughout

Rear Load Building

Available Immediately

Call For Lease Rate

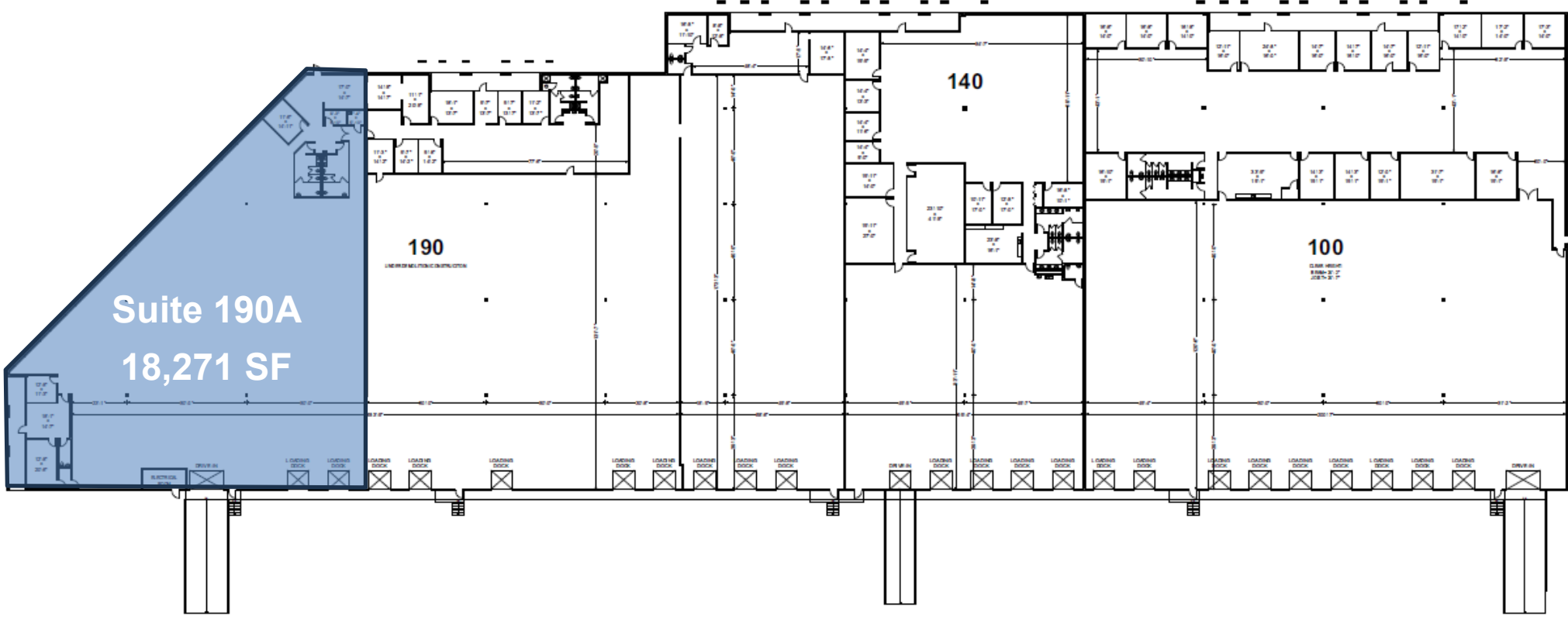


E L I O N

# MARINA WEST BUSINESS CENTER

13800 N.W. 2<sup>nd</sup> Street | Sunrise, Florida

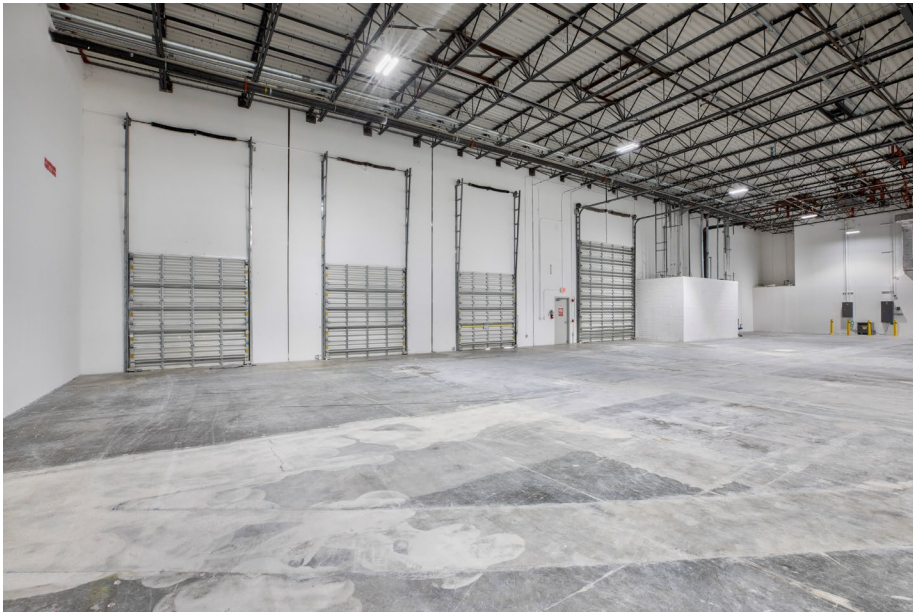
## SITE PLAN

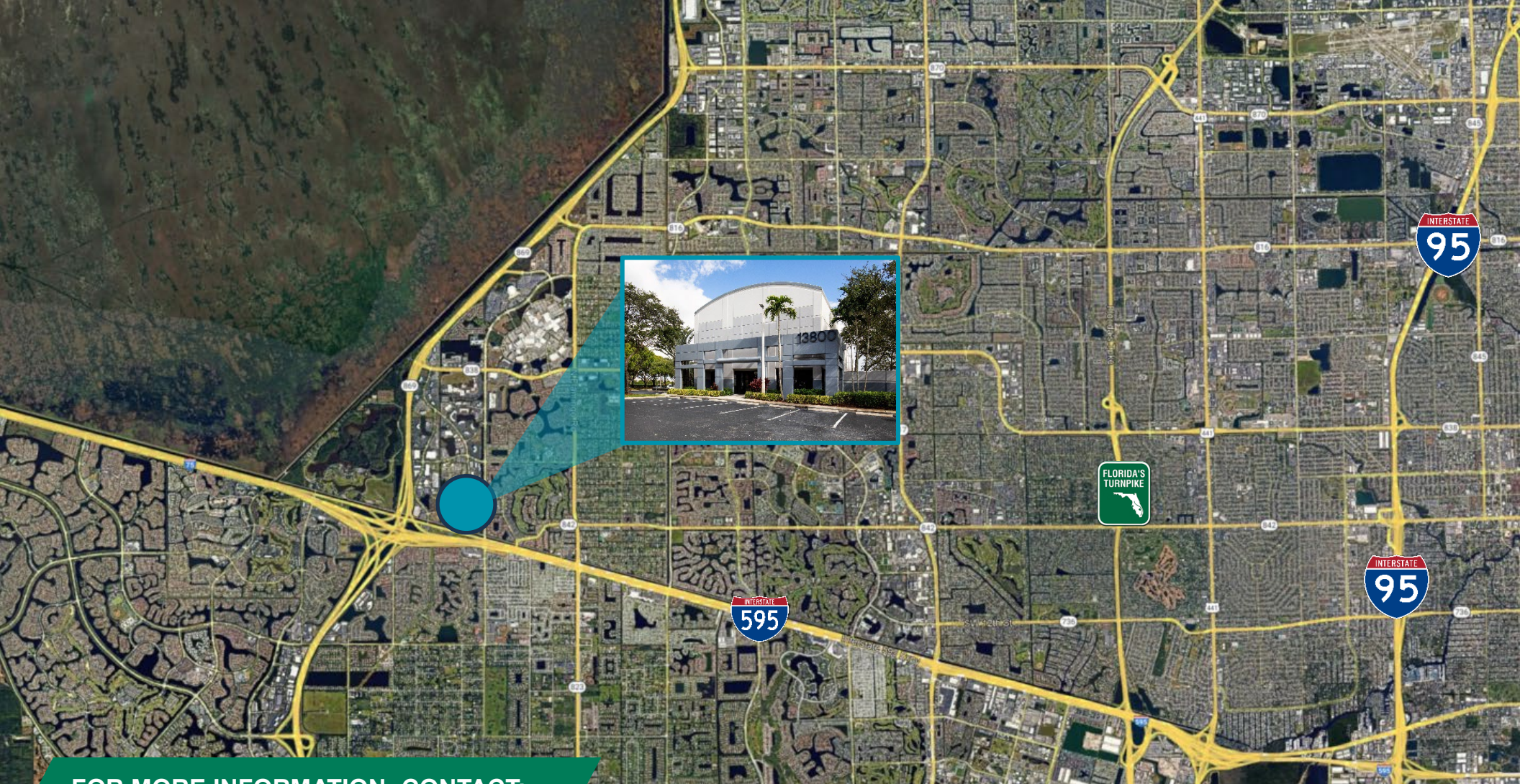


# MARINA WEST BUSINESS CENTER

13800 N.W. 2<sup>nd</sup> Street | Sunrise, Florida

## INTERIOR PHOTOS





## FOR MORE INFORMATION, CONTACT:

**MATTHEW G. MCALLISTER, SIOR**  
Executive Director  
+1 561 901 5216  
[matthew.mcallister@cushwake.com](mailto:matthew.mcallister@cushwake.com)

**ERIC CANTOR**  
Senior Associate  
+1 561 227 2068  
[eric.cantor@cushwake.com](mailto:eric.cantor@cushwake.com)

©2024 Cushman & Wakefield. All rights reserved. The information contained in this communication is strictly confidential. This information has been obtained from sources believed to be reliable but has not been verified. NO WARRANTY OR REPRESENTATION, EXPRESS OR IMPLIED, IS MADE AS TO THE CONDITION OF THE PROPERTY (OR PROPERTIES) REFERENCED HEREIN OR AS TO THE ACCURACY OR COMPLETENESS OF THE INFORMATION CONTAINED HEREIN, AND SAME IS SUBMITTED SUBJECT TO ERRORS, OMISSIONS, CHANGE OF PRICE, RENTAL OR OTHER CONDITIONS, WITHDRAWAL WITHOUT NOTICE, AND TO ANY SPECIAL LISTING CONDITIONS IMPOSED BY THE PROPERTY OWNER(S). ANY PROJECTIONS, OPINIONS OR ESTIMATES ARE SUBJECT TO UNCERTAINTY AND DO NOT SIGNIFY CURRENT OR FUTURE PROPERTY PERFORMANCE.



ELION