



AVAILABILITIES

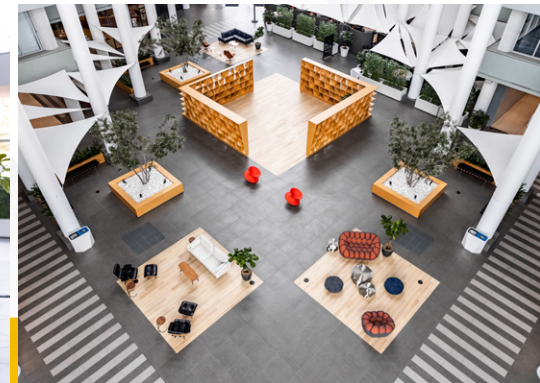
19100 VON KARMAN

| SUITE | SF AVAILABLE | CONTIG. | SUITE DESCRIPTION |
|---|--------------|--|---|
| 180  | 3,159 | — | Lobby space with glass fronts, 2 offices, large conference room, kitchen, and large open area. |
| 200  | 5,957 | — | 9 offices, large conference room, kitchen, and large open area. |
| 250  | 3,713 | — | Double door entry, 7 window offices, conference room, kitchen and reception area. |
| 280   | 2,864 | — | 4 Window offices, 1 interior office, conference room, kitchen and open area. |
| 350   | 2,065 | — | 3 offices, conference room, Kitchen, and large open efficient space. |
| 370  | 2,025 | — | Corner suite – one office, kitchen, large conference room, and open area. Available May. |
| 400  | 4,591 | — | Double door entry, 7 window offices, reception area, kitchen, copy area, cubicle space |
| 570  | 3,235 | — | SPEC SUITE. 3 offices, kitchenette, conference room, and open area. Furniture available. |
| 610  | 2,533 | 8,261  | Conference room and very large open space with expansive glassline. |
| 650  | 5,728 | 8,261  | Double door entry, 4 private offices, conference room, kitchen, storage, and large open area. Available August. |
| 800  | 15,476 | — | Full Floor – 27 offices, 2 conference rooms, 3 kitchens, reception, and storage/IT closets. |

 Click to view floor plans

 Click to view virtual tours


Rev. 04.09.26




AVAILABILITIES

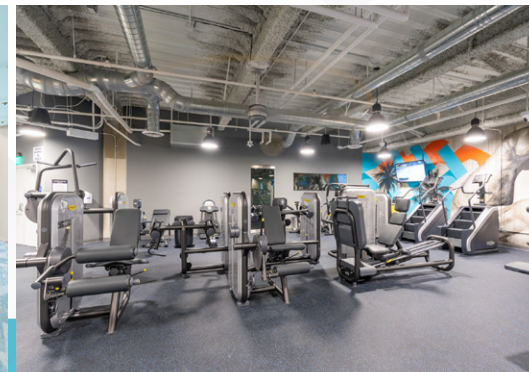
19200 VON KARMAN

| SUITE | SF AVAILABLE | CONTIG. | SUITE DESCRIPTION |
|---|--------------|---|---|
| 100  | 4,722 | — | Double door entry, 7 window offices, reception area, conference room, kitchen, and open area. |
| 200  | 7,183 | — | Double door entry, 7 interior offices, window lined conference room, kitchen, open area and balcony. |
| 300  | 2,267 | — | Double door entry, 3 window offices, kitchen and copy room. |
| 360  | 2,624 | — | Double door entry, 6 window offices, 2 interior offices, kitchen, storage room and copy room. |
| 400  | 18,838 | — | FULL FLOOR. 47 Private offices, 2 conference rooms, kitchen, reception area with lobby, exterior balcony, bridge access, IT server room, copy area, and storage. Available February 2027 |
| 500  | 2,348 | — | HYPOTHETICAL SPACE PLAN. Modern entry/kitchenette, conference room, 3 private offices, open office area. |
| 510  | 7,454 | — | Double door entry, 1 window office, 2 interior conference rooms, 8 interior offices and open area. |
| 600  | 16,621 | — | FULL FLOOR. 40 Private offices, 2 conference rooms, kitchen, reception area with lobby, exterior balcony, bridge access, IT server room, copy area, and storage. Available February 2027 |
| 850  | 4,185 | — | Double door entry, 6 window offices, 2 conference rooms, 1 interior office, kitchen & storage room. Available September. |
| 900  | 3,652 | 8,286  | Double door entry, 4 window offices, 2 interior offices, kitchen, conference room & storage room, bridge access. |
| 920  | 943 | 8,286  | 2 window offices, kitchen, open office area. Available July 2026. |
| 940   | 3,681 | 8,286  | 8 window offices, kitchen and open area. |

 Click to view floor plans

 Click to view virtual tours

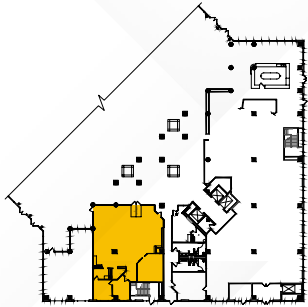
Rev. 04.09.26



AVAILABILITIES

19100 | Suite 180

±3,159 SF

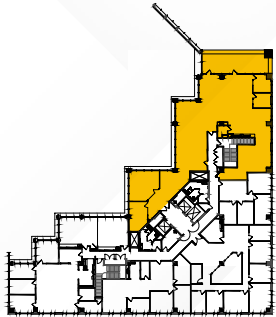
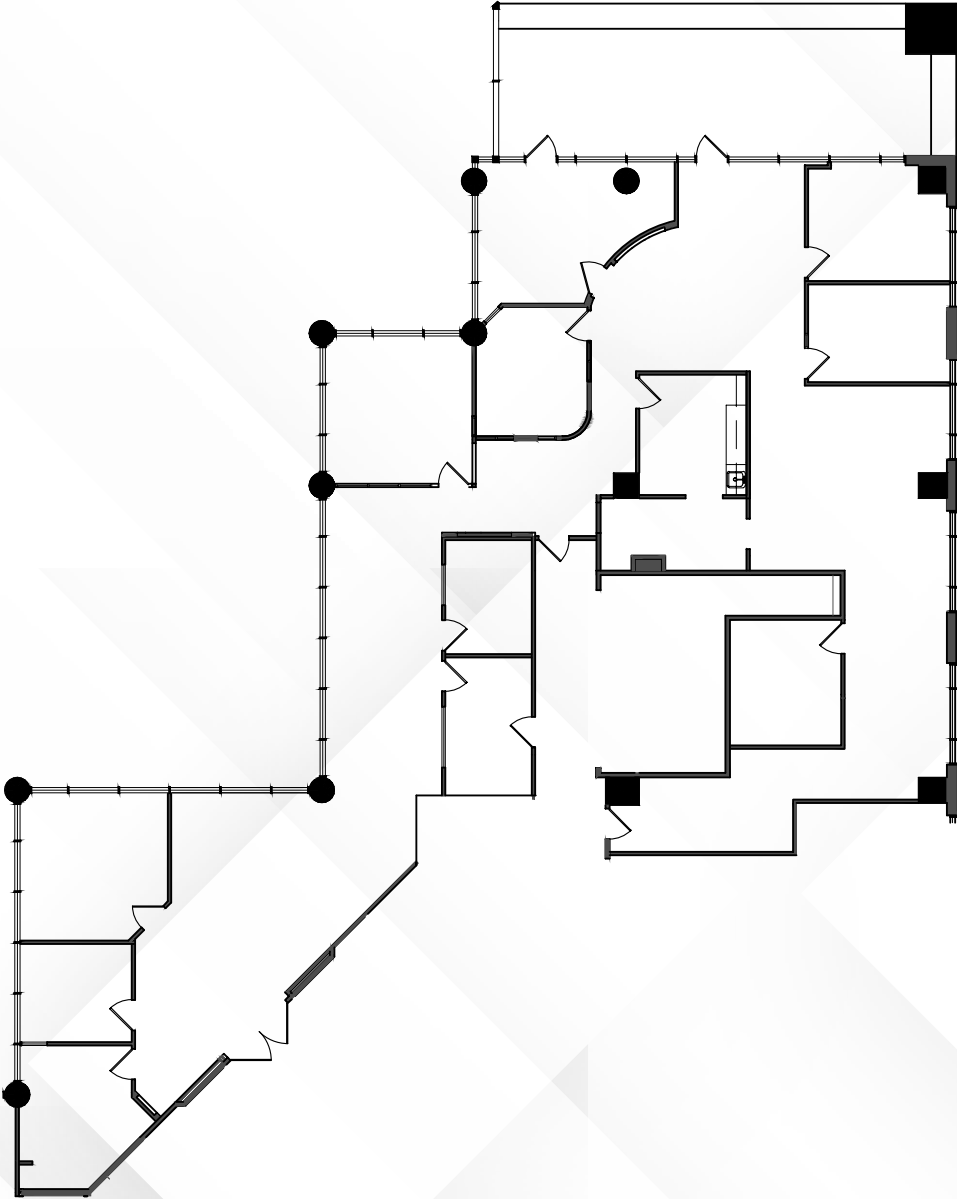


Overview

AVAILABILITIES

19100 | Suite 200

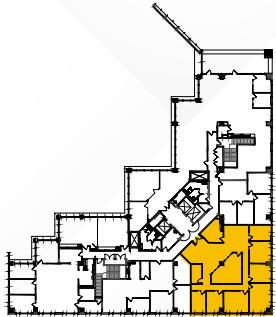
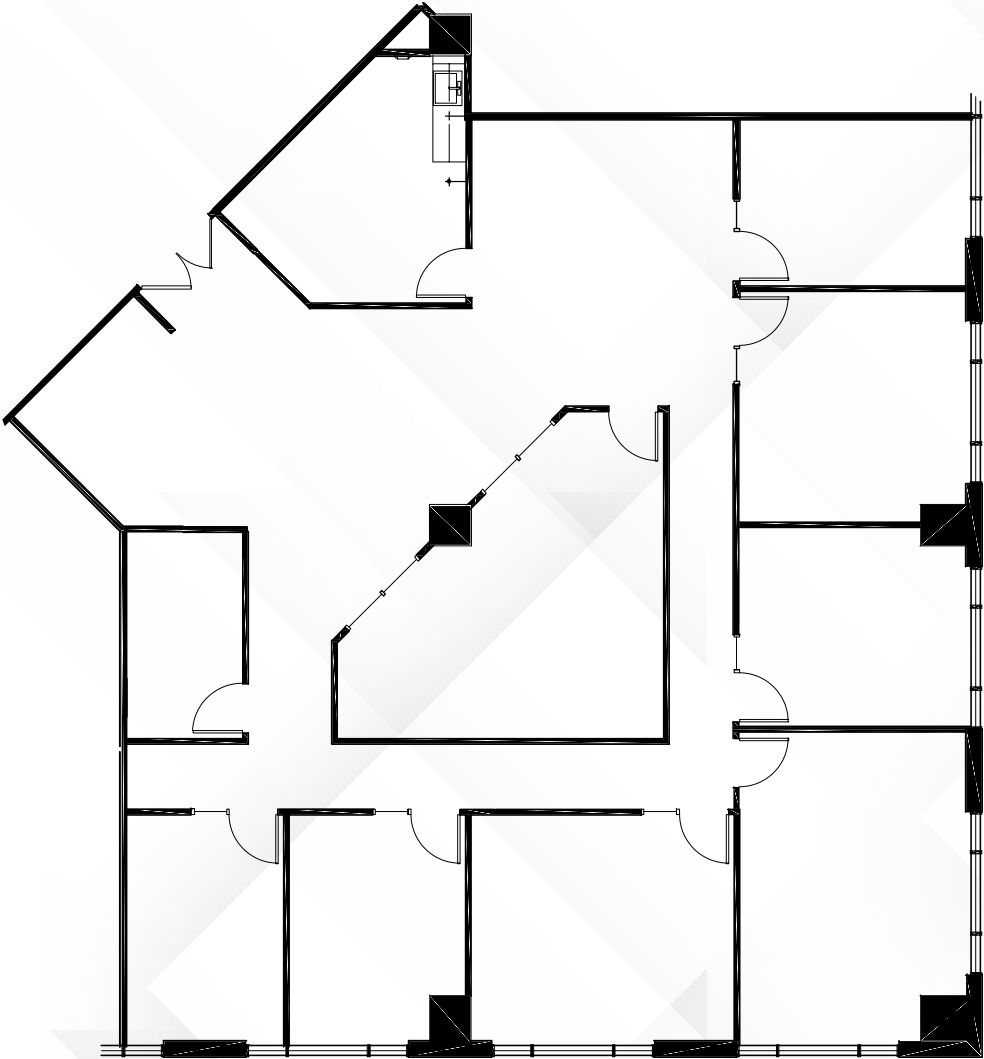
±5,957 SF



AVAILABILITIES

19100 | Suite 250

±3,713 SF



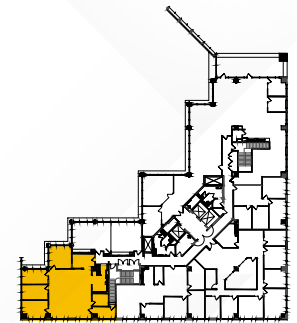
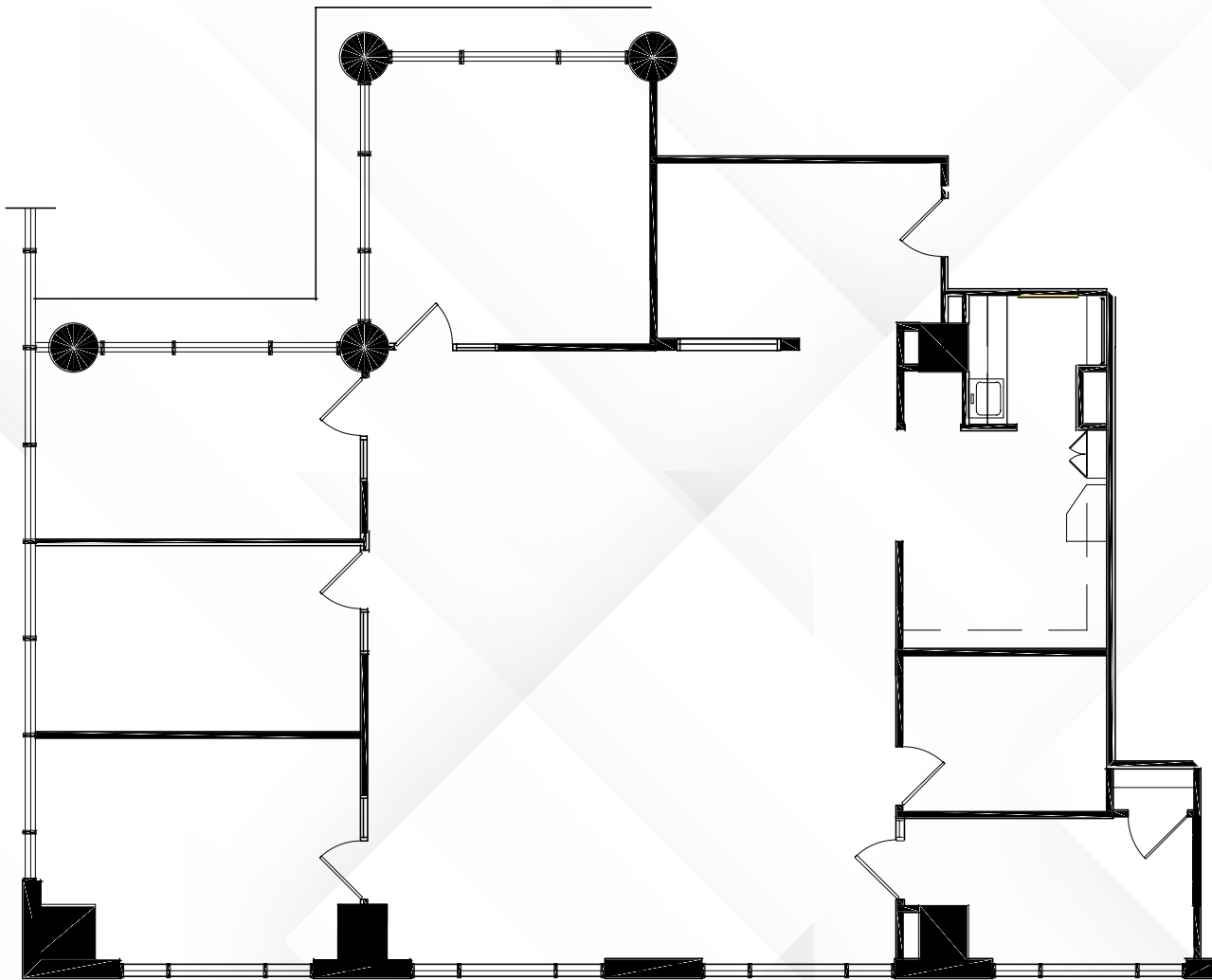
Overview

AVAILABILITIES

19100 | Suite 280

±2,864 SF

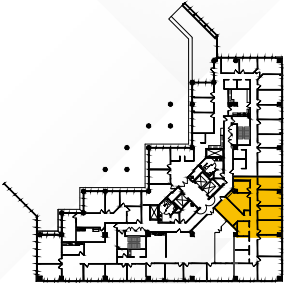
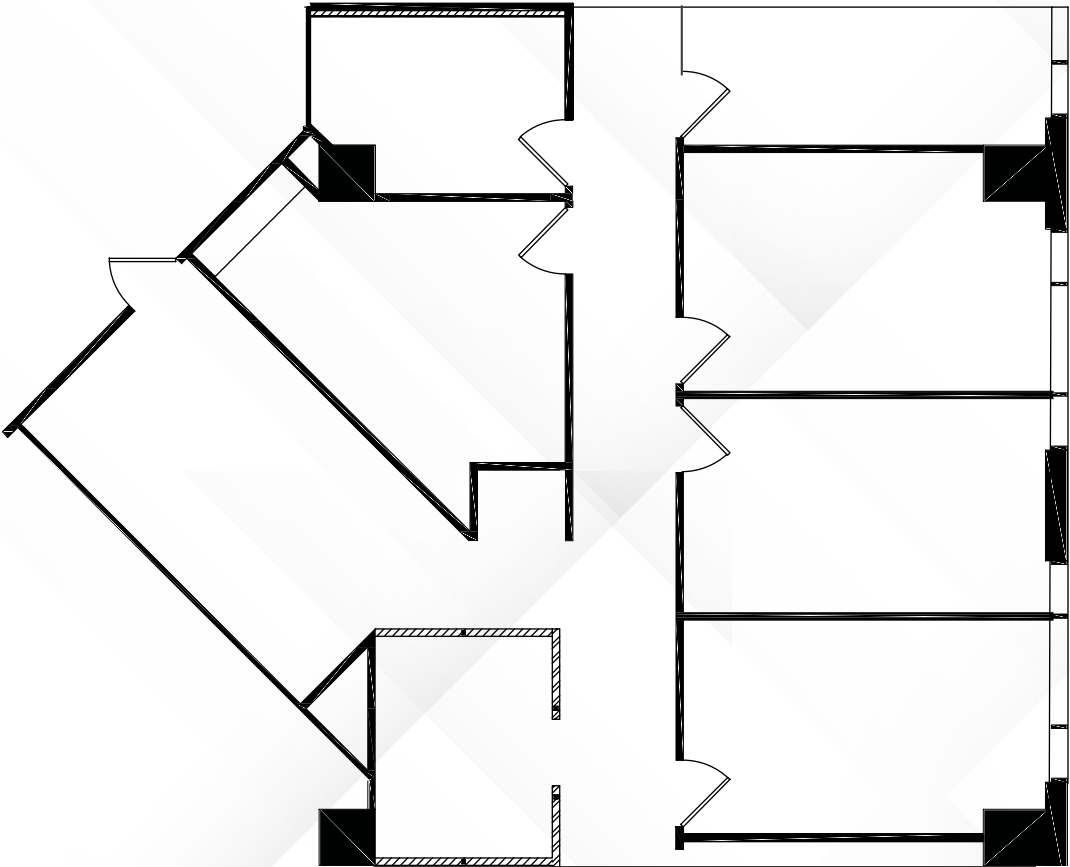
360°
↻



AVAILABILITIES

19100 | Suite 350

±2,065 SF

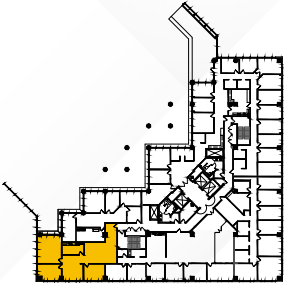
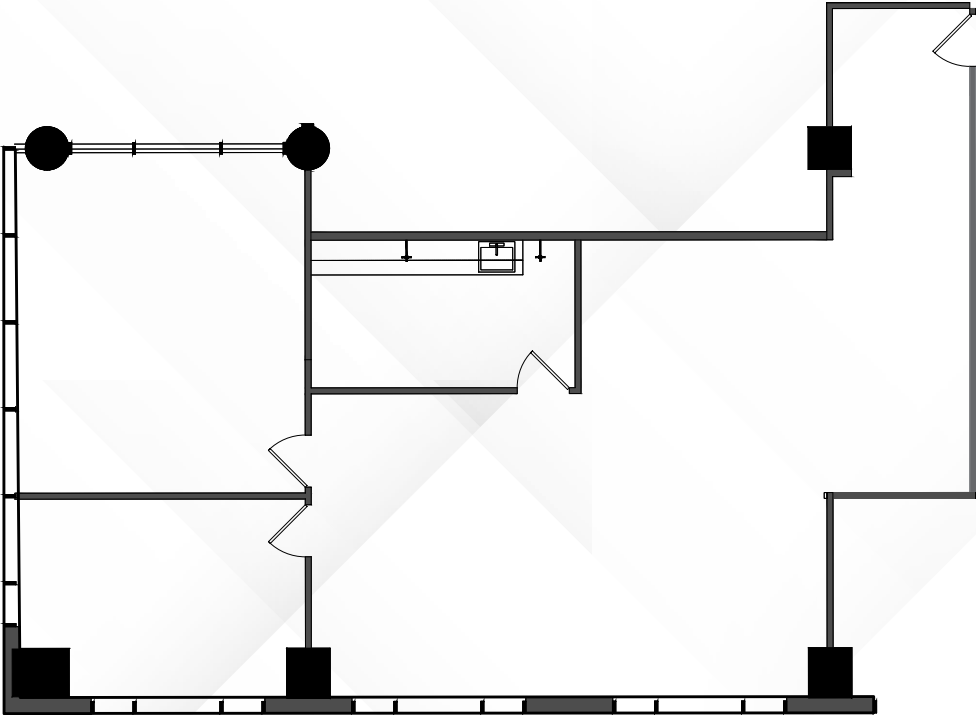


Overview

AVAILABILITIES

19100 | Suite 370

±2,025 SF

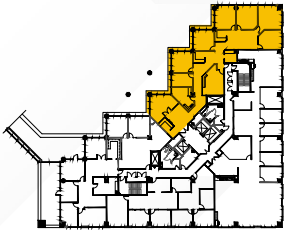
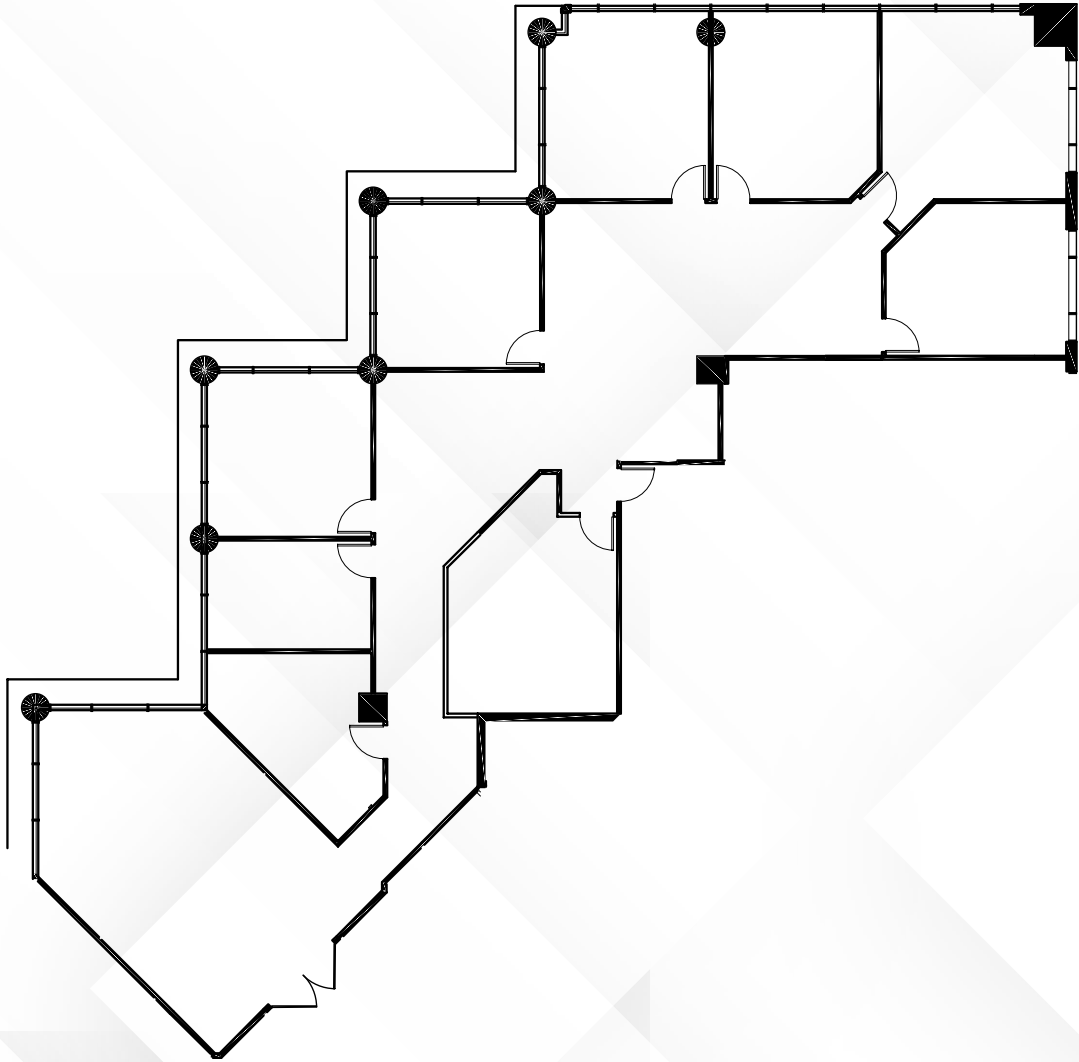


Overview

AVAILABILITIES

19100 | Suite 400

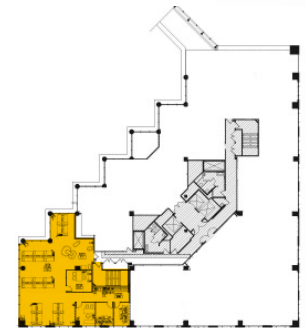
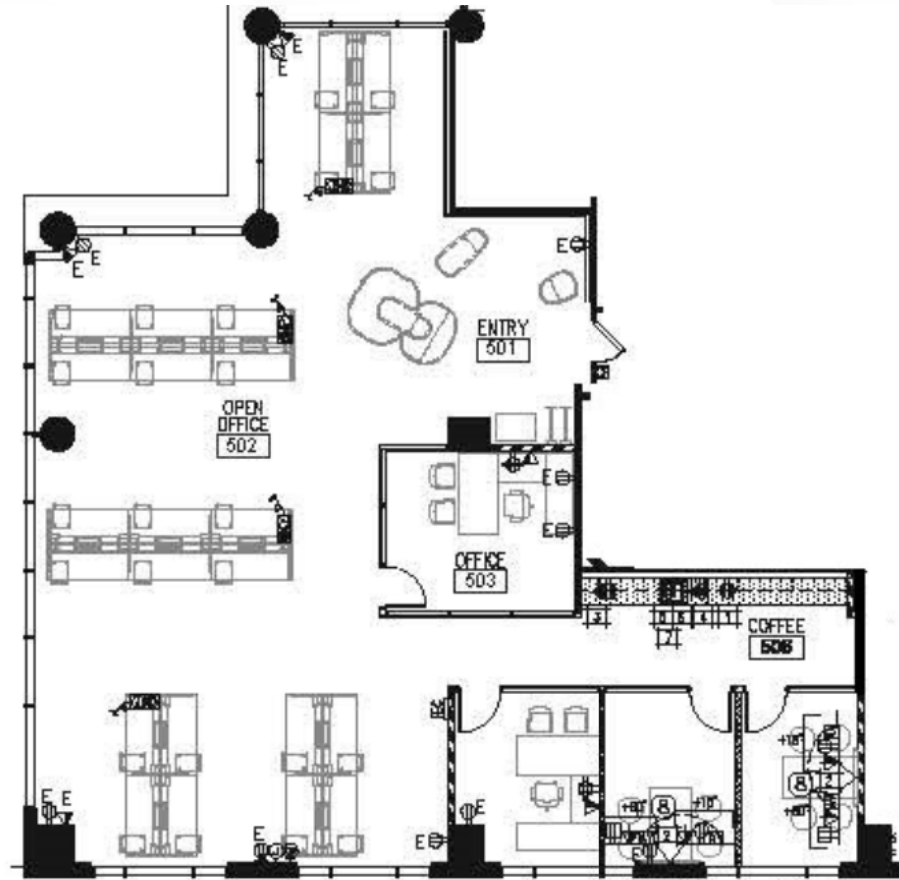
±4,591 SF



AVAILABILITIES

19100 | Suite 570

±3,235 SF

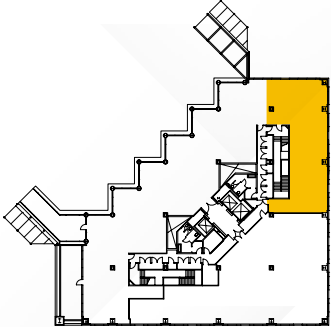
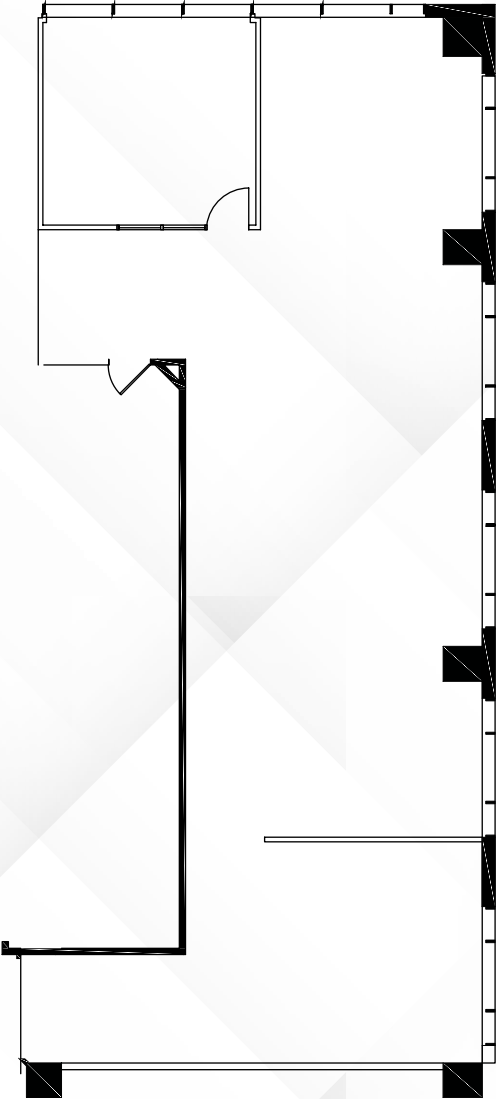


Overview

AVAILABILITIES

19100 | Suite 610

±2,533 SF

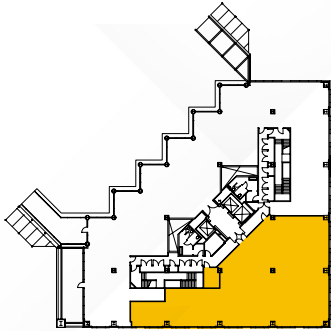
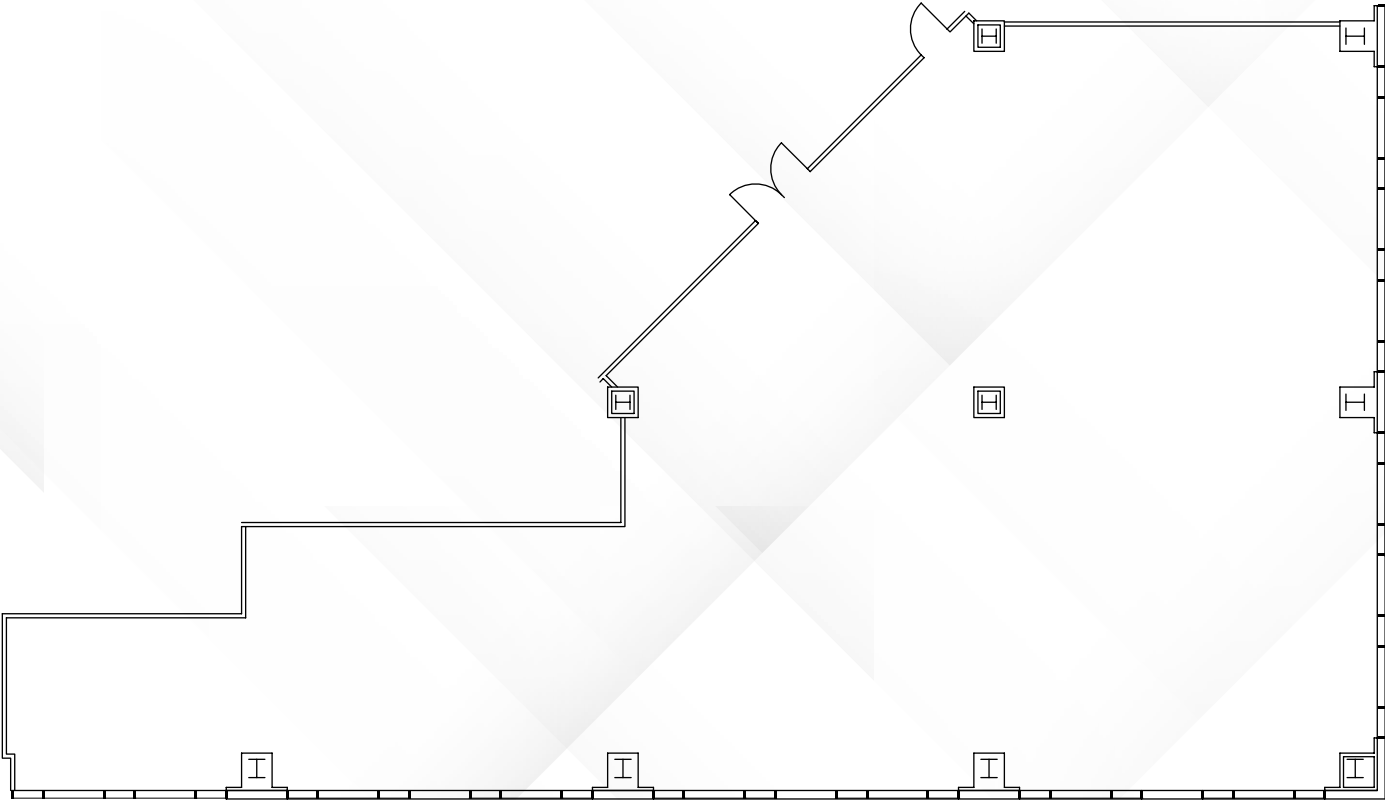


Overview

AVAILABILITIES

19100 | Suite 650

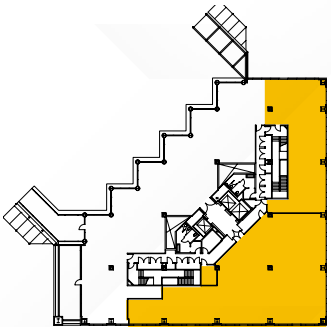
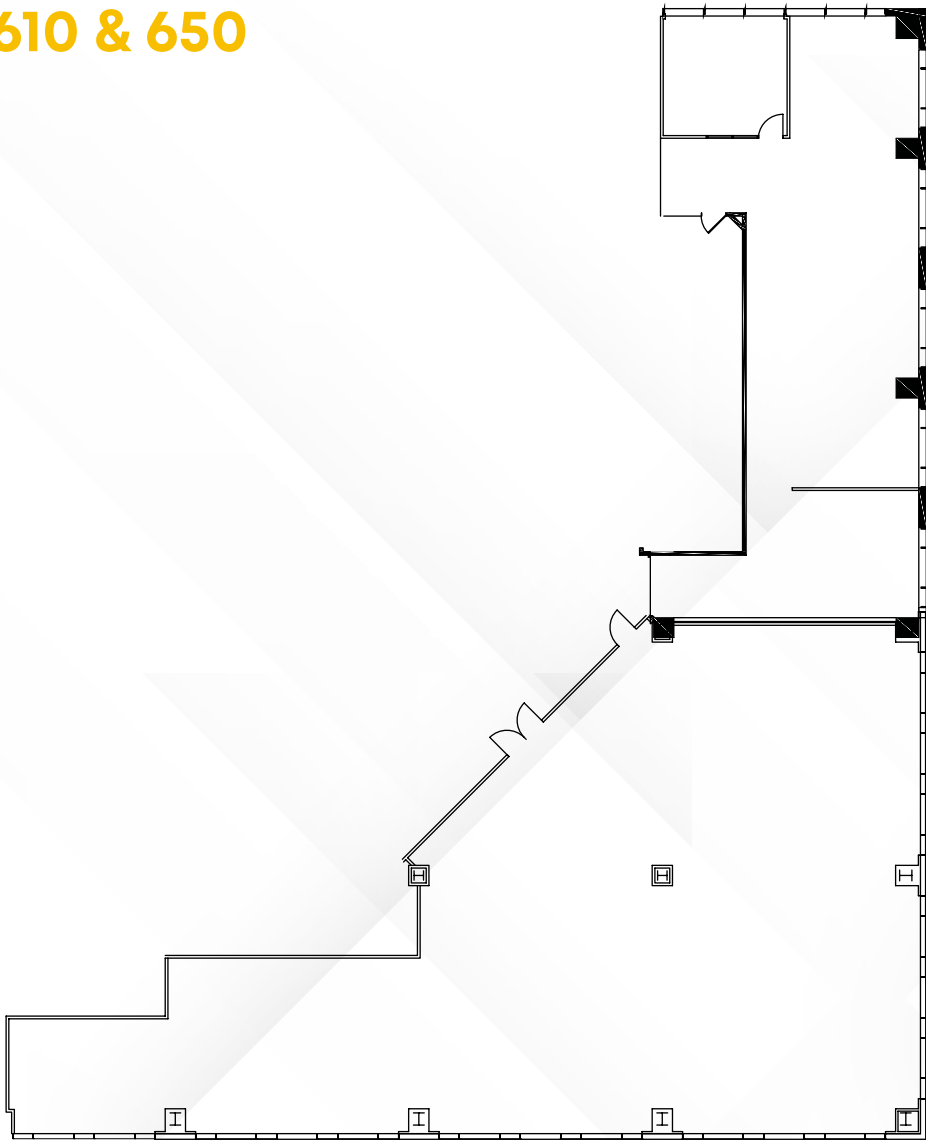
±5,728 SF



AVAILABILITIES

19100 | Suite 610 & 650

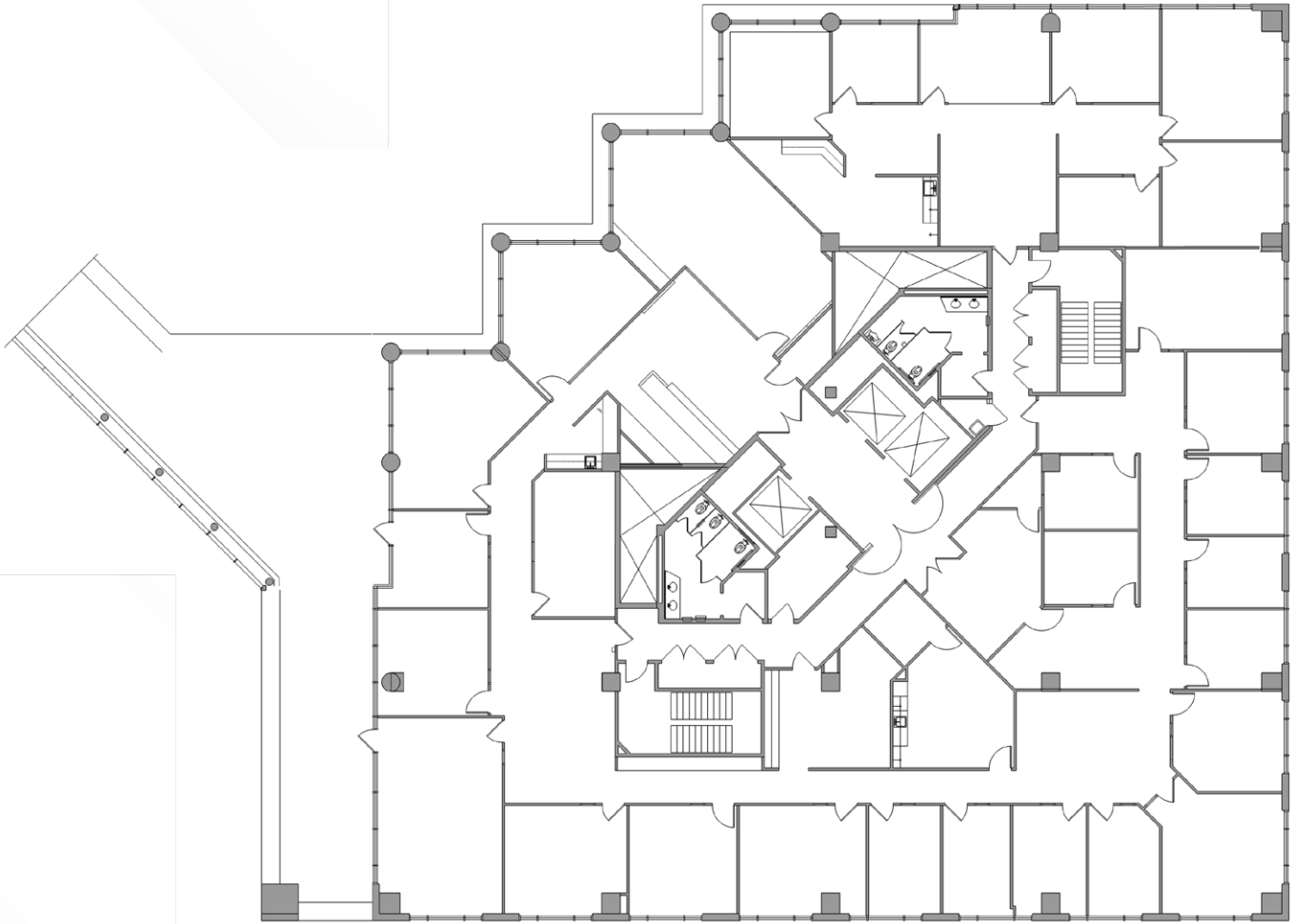
±8,261 SF



AVAILABILITIES

19100 | Suite 800

±15,476 SF

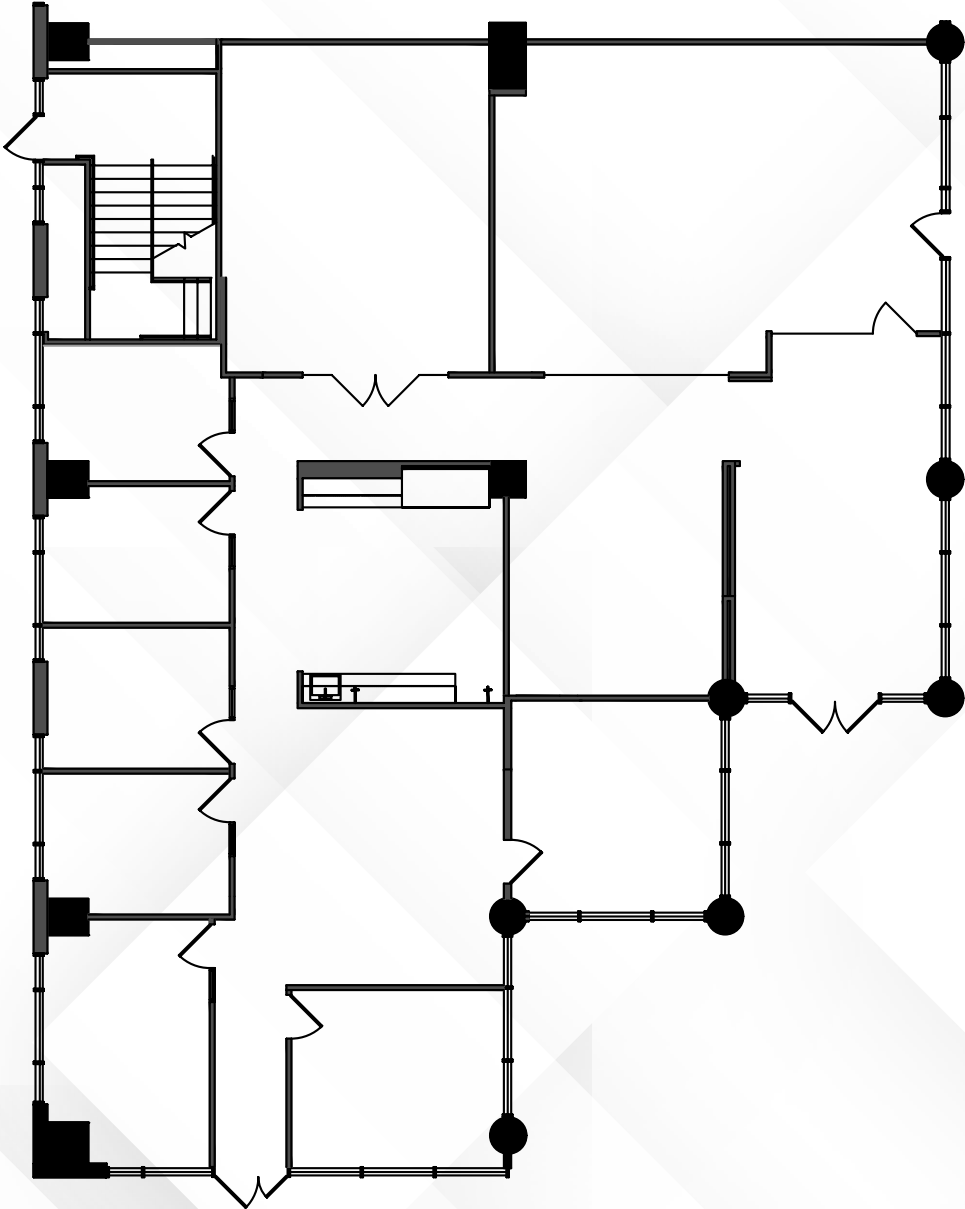


Overview

AVAILABILITIES

19200 | Suite 100

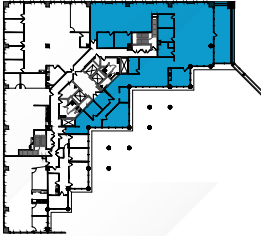
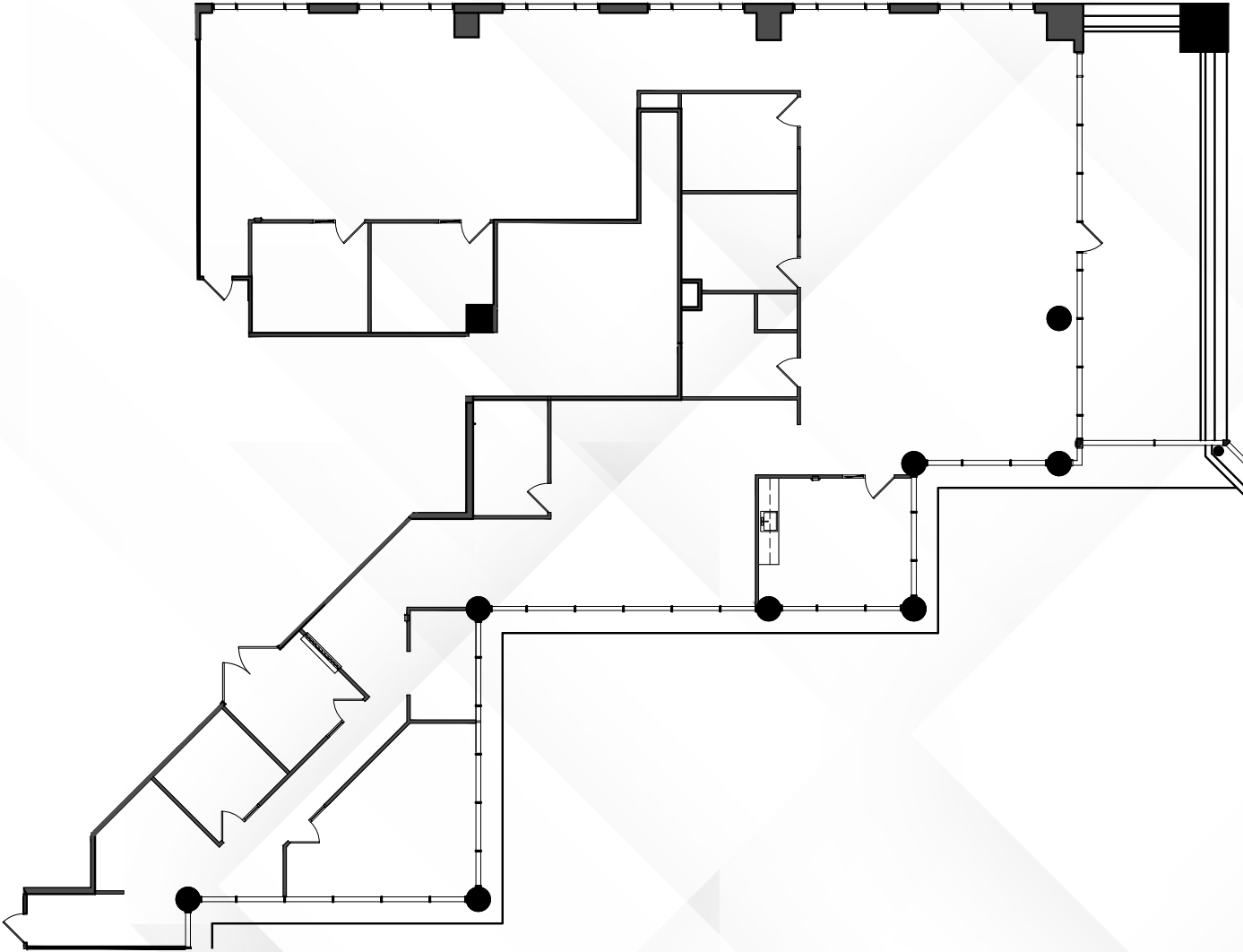
±4,722 SF



AVAILABILITIES

19200 | Suite 200

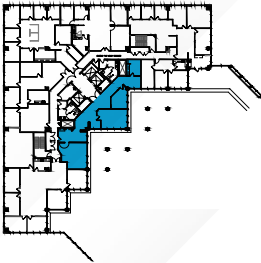
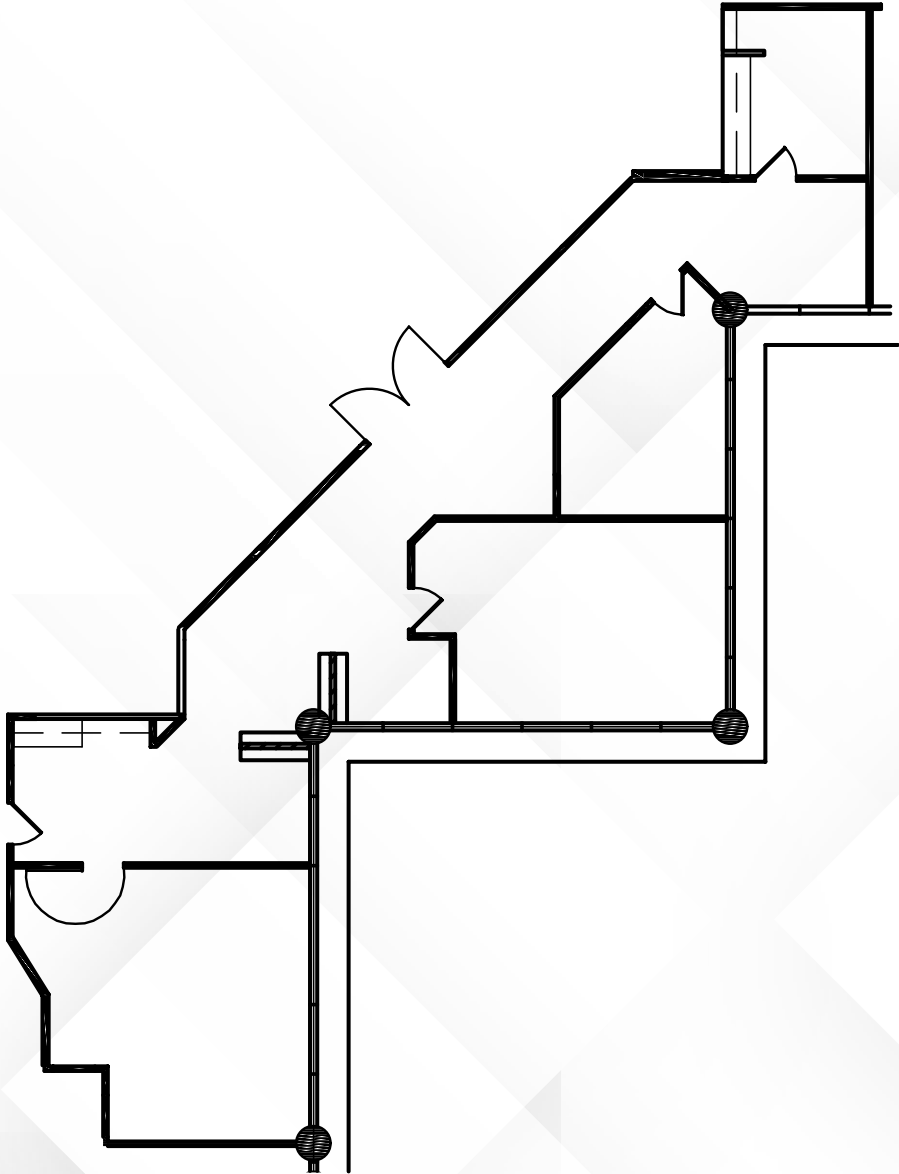
±7,183 SF



AVAILABILITIES

19200 | Suite 300

±2,267 SF

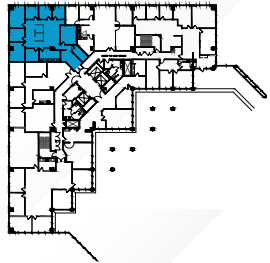
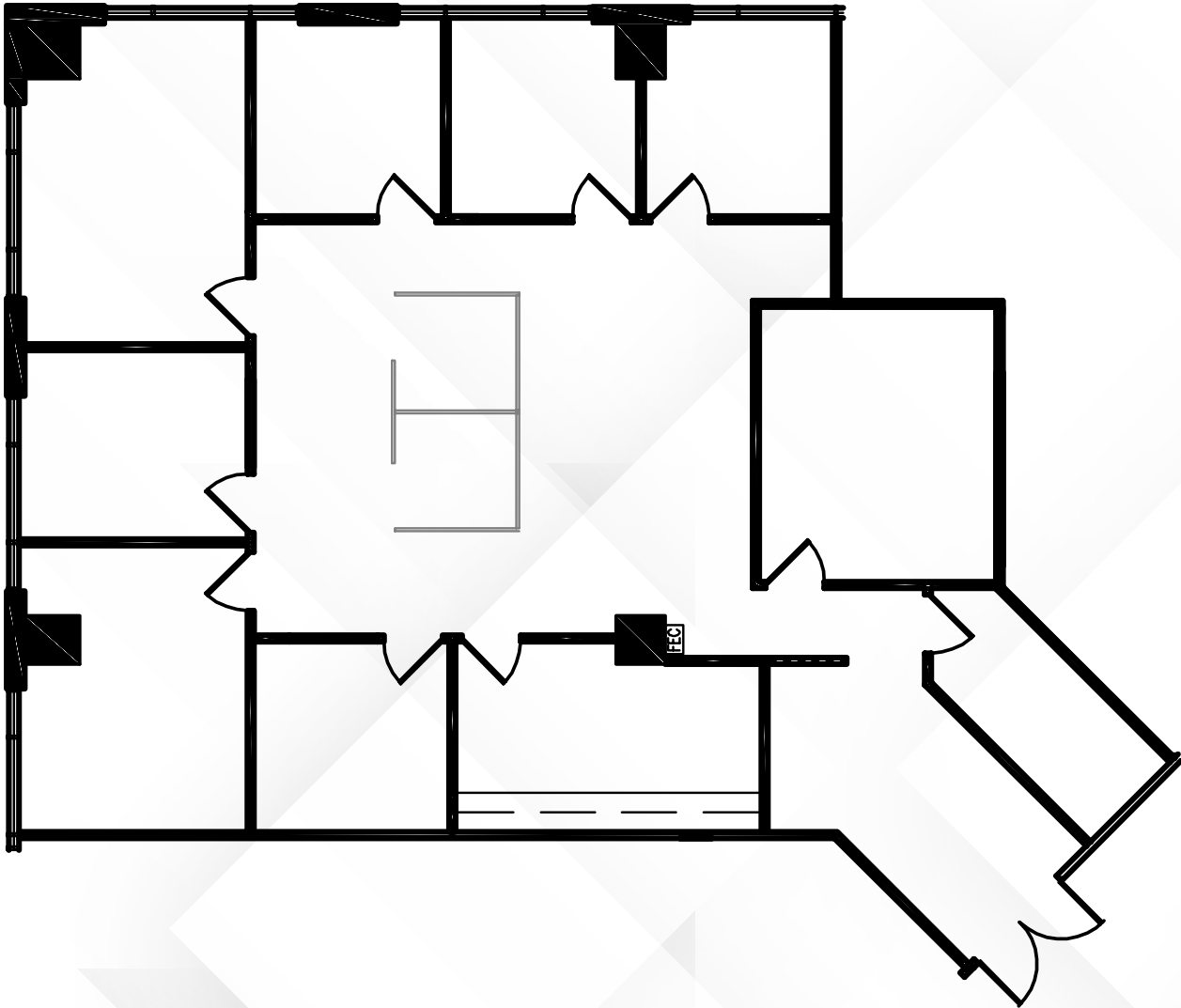


Overview

AVAILABILITIES

19200 | Suite 360

±2,624 SF

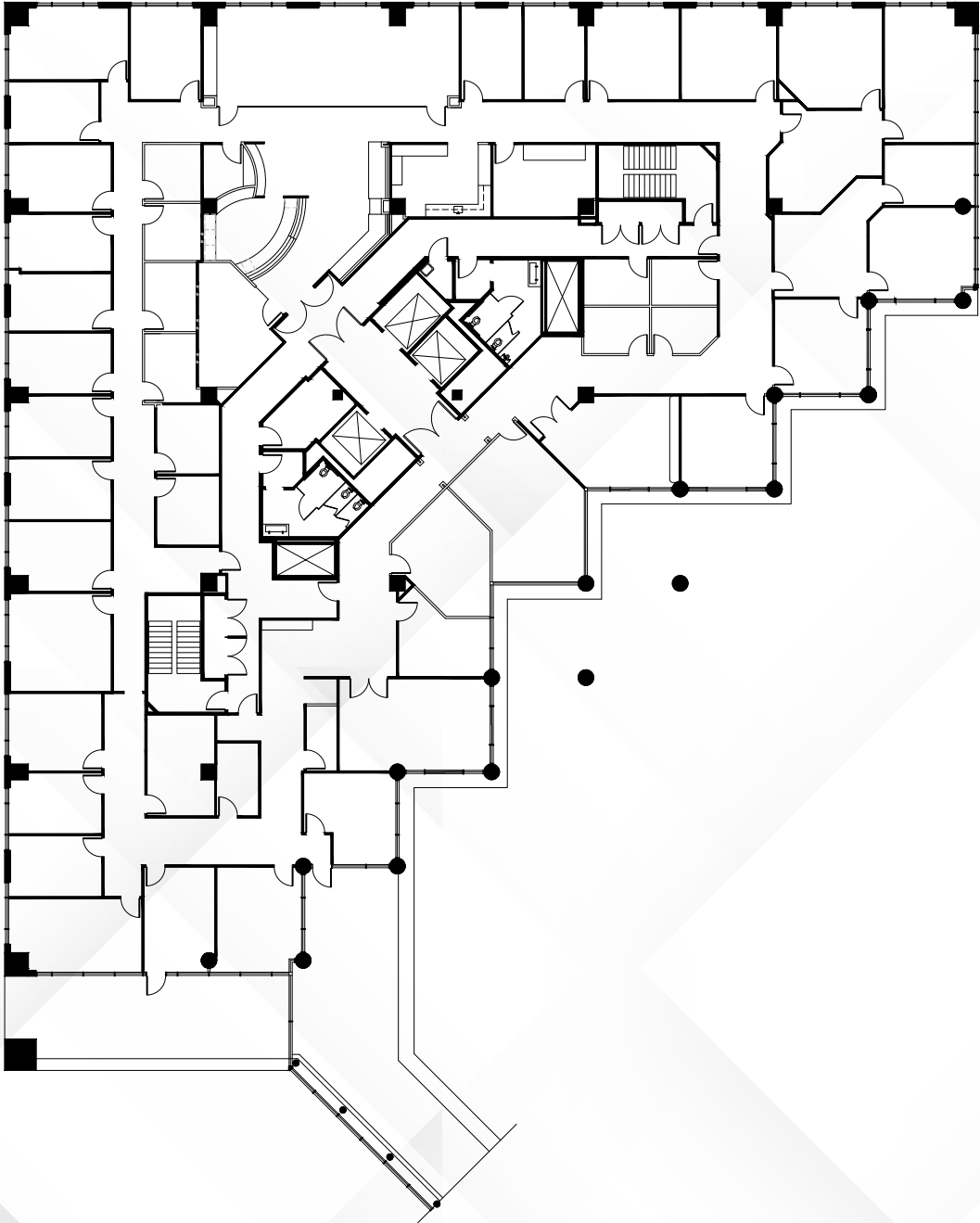


Overview

AVAILABILITIES

19200 | 4th Floor

±18,838 SF

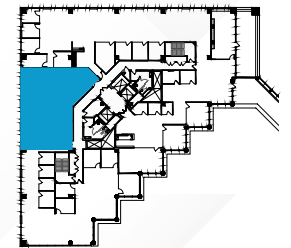
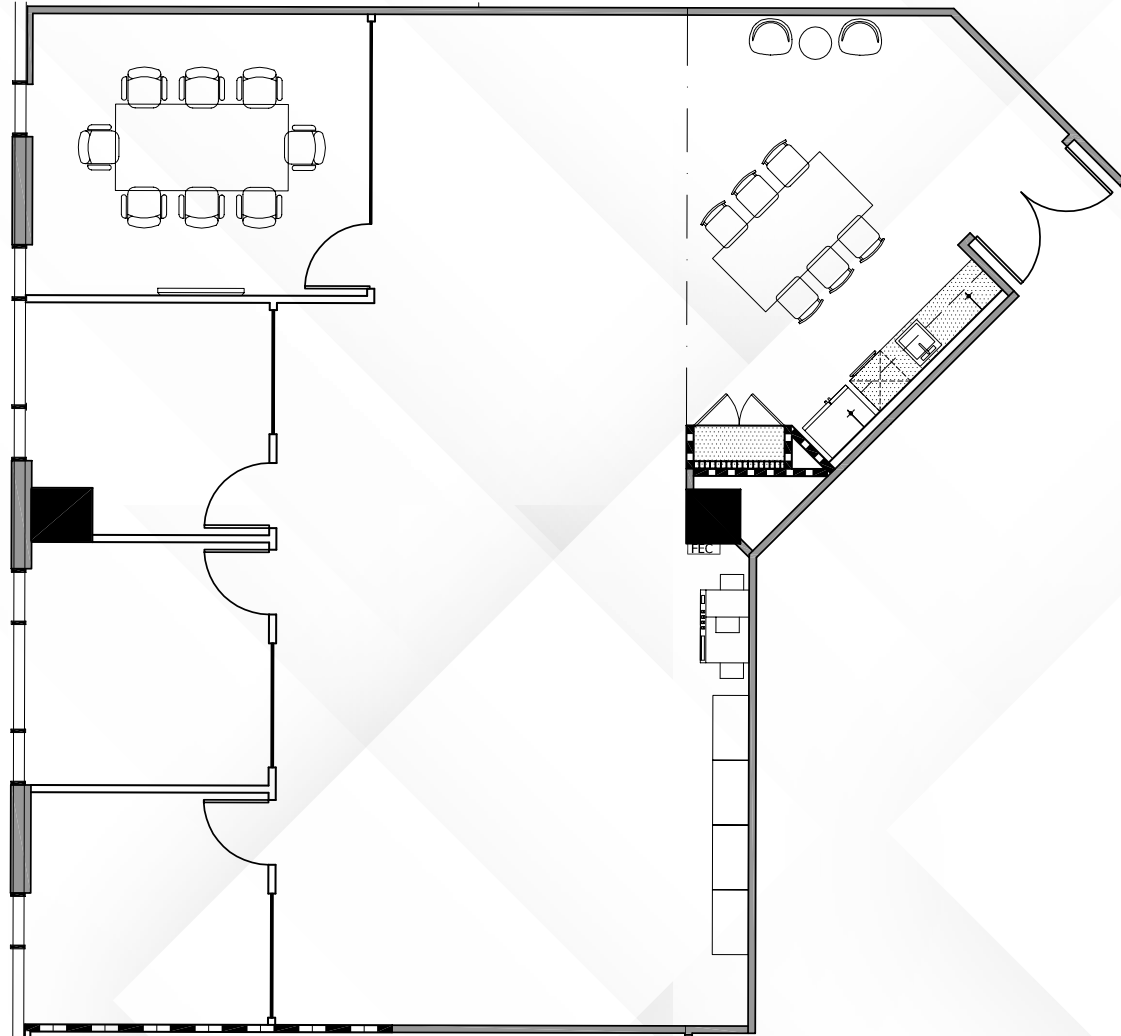


Overview

AVAILABILITIES

19200 | Suite 500

Hypothetical Spec Suite | 2,348 RSF

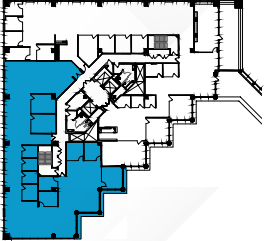
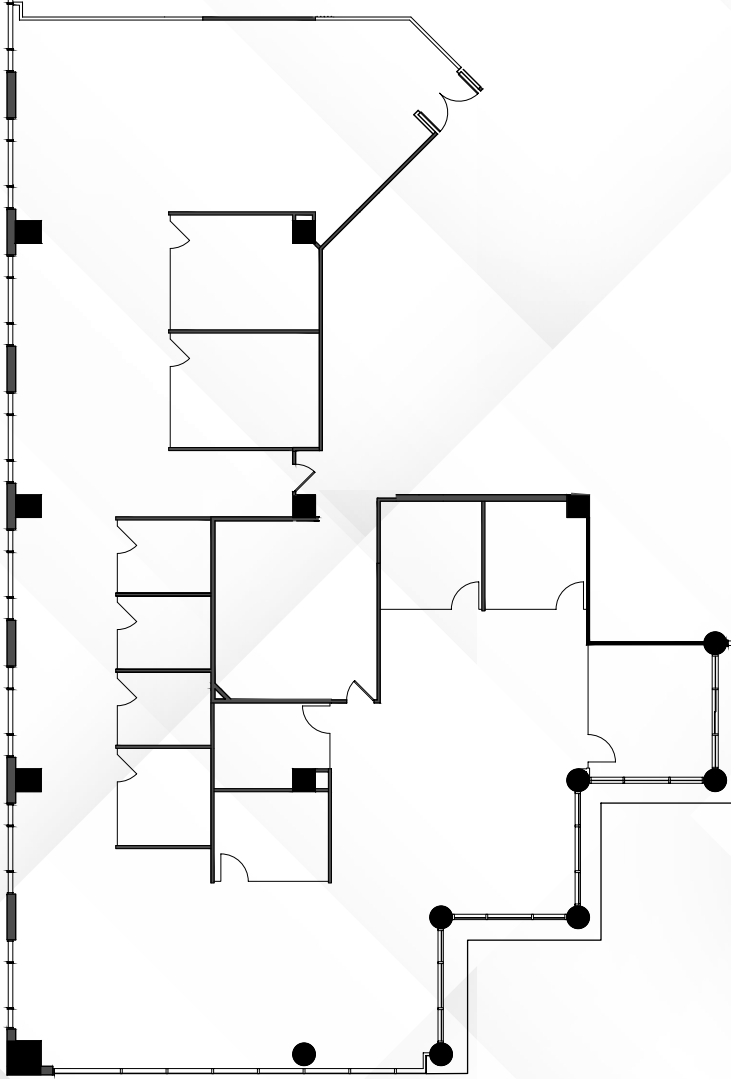


Overview

AVAILABILITIES

19200 | Suite 510

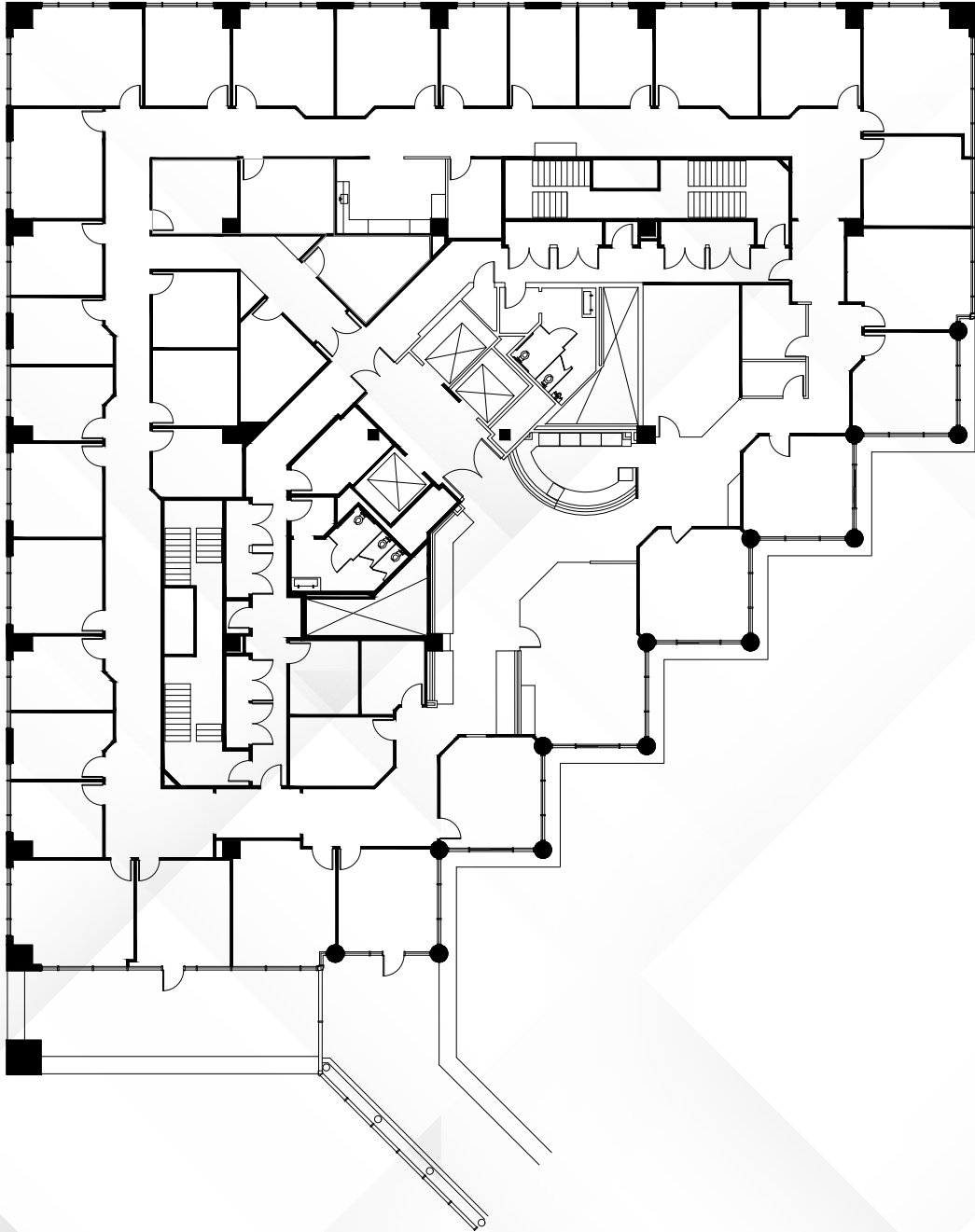
±7,454 SF



AVAILABILITIES

19200 | 6th Floor

±16,621 SF



Overview