

62

THREADNEEDLE

A UNIQUE OPPORTUNITY, FULLY FITTED
FLOOR OF 7,481 SQ FT AVAILABLE.

62THREADNEEDLE.COM

THE BEAT GOES ON

Threadneedle Street is in the heart of the City of London. A famous street that marches to the beat of commerce.

No. 62 Threadneedle is next to the Bank of England and opposite The Royal Exchange, with a modern and sophisticated refurbishment, it delivers a healthy work environment for its inhabitants.

THE BUILDING



THE HEART AND SOUL



From the entrance of the building to its landscaped terraces, 62 Threadneedle breathes heart and soul into the working environment.

The newly repositioned entrance on Threadneedle Street welcomes visitors into a large contemporary reception area.

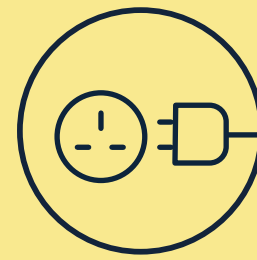
A fresh and vibrant workplace, refurbished and extended throughout with landscaped terraces on the 1st, 2nd and 3rd floors. Brand new cycle storage and shower facilities in the extended basement make a healthier commute a breeze.

The beauty of the interiors is echoed on the outside, with new cladding at ground floor level creating a grand and striking focal point on this iconic City street.

THE BUILDING



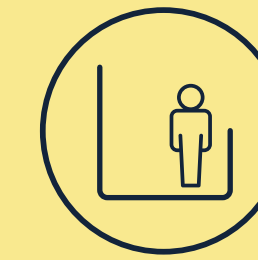
SUMMARY SPECIFICATION & AMENITIES



Bike/scooter
charging



Energy efficient LED lights
with daylight dimming



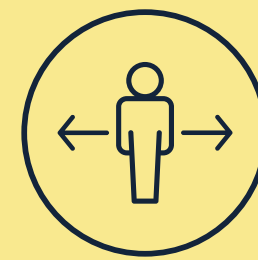
Private 2nd floor
terrace



Accessible
parking space



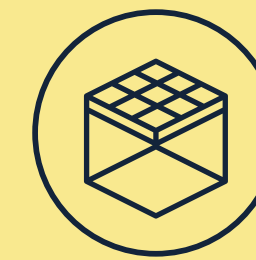
Fully Fitted Plug
& Play floor



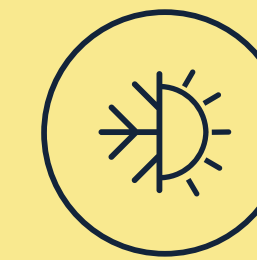
Occupancy 1:8



Remodelled
reception



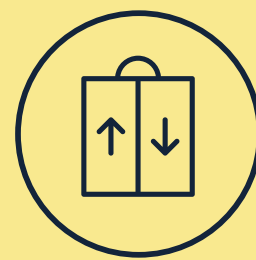
Semi-exposed
raft ceiling



Air conditioning



Male and female
showers



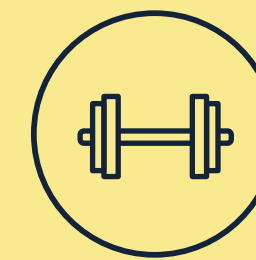
3 x passenger
lifts



64 bicycle spaces +
14 Brompton lockers



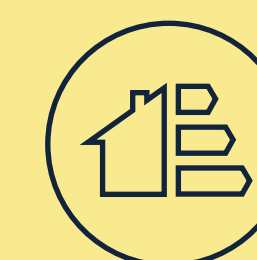
64 lockers



Private lower
ground floor gym



BREEAM
Excellent



EPC: B

SPECIFICATION

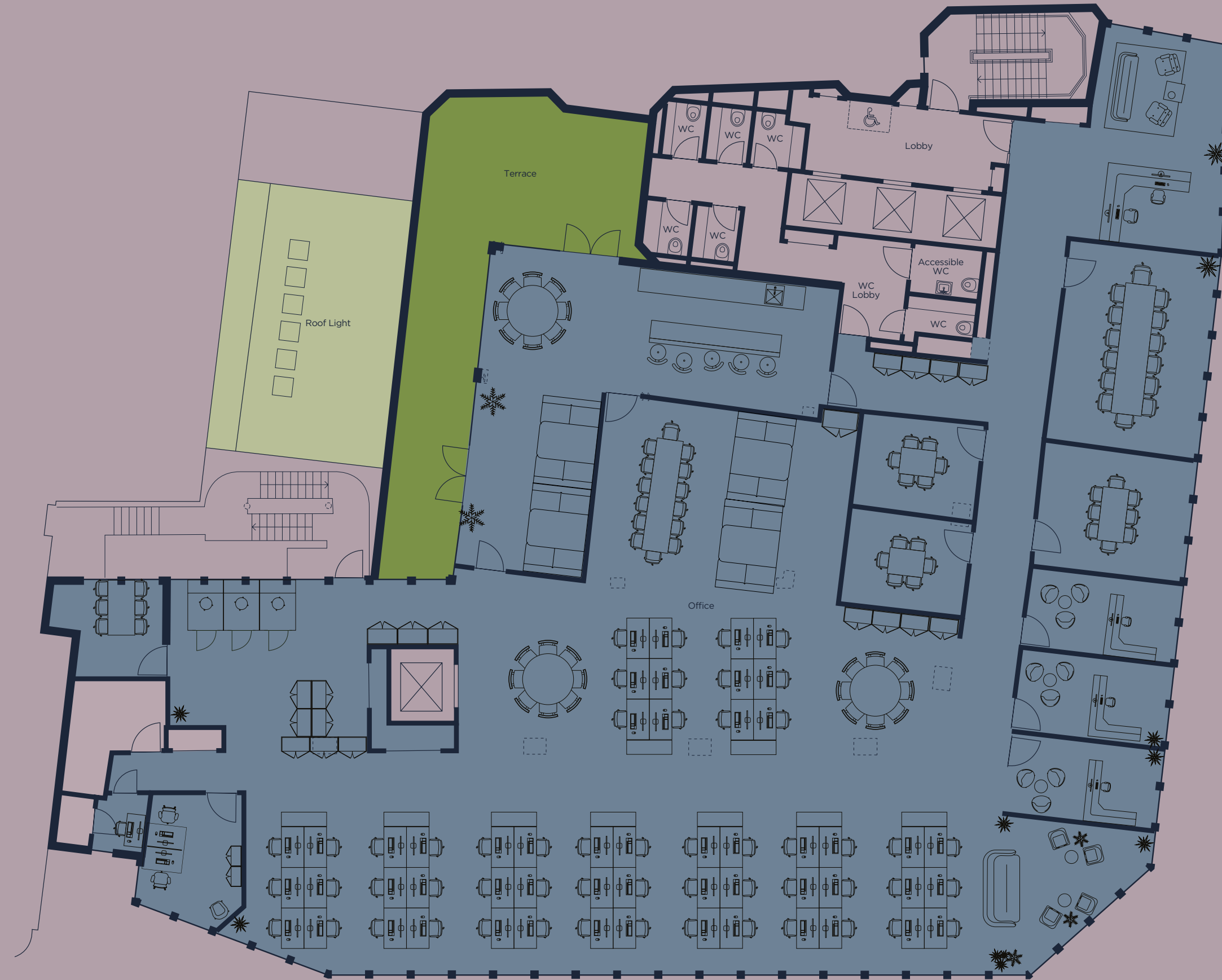


ACCOMMODATION

SECOND FLOOR

7,481 sq. ft | 695 sq. m

Terrace 570 sq. ft | 53 sq. m



Threadneedle Street

Bartholomew Lane

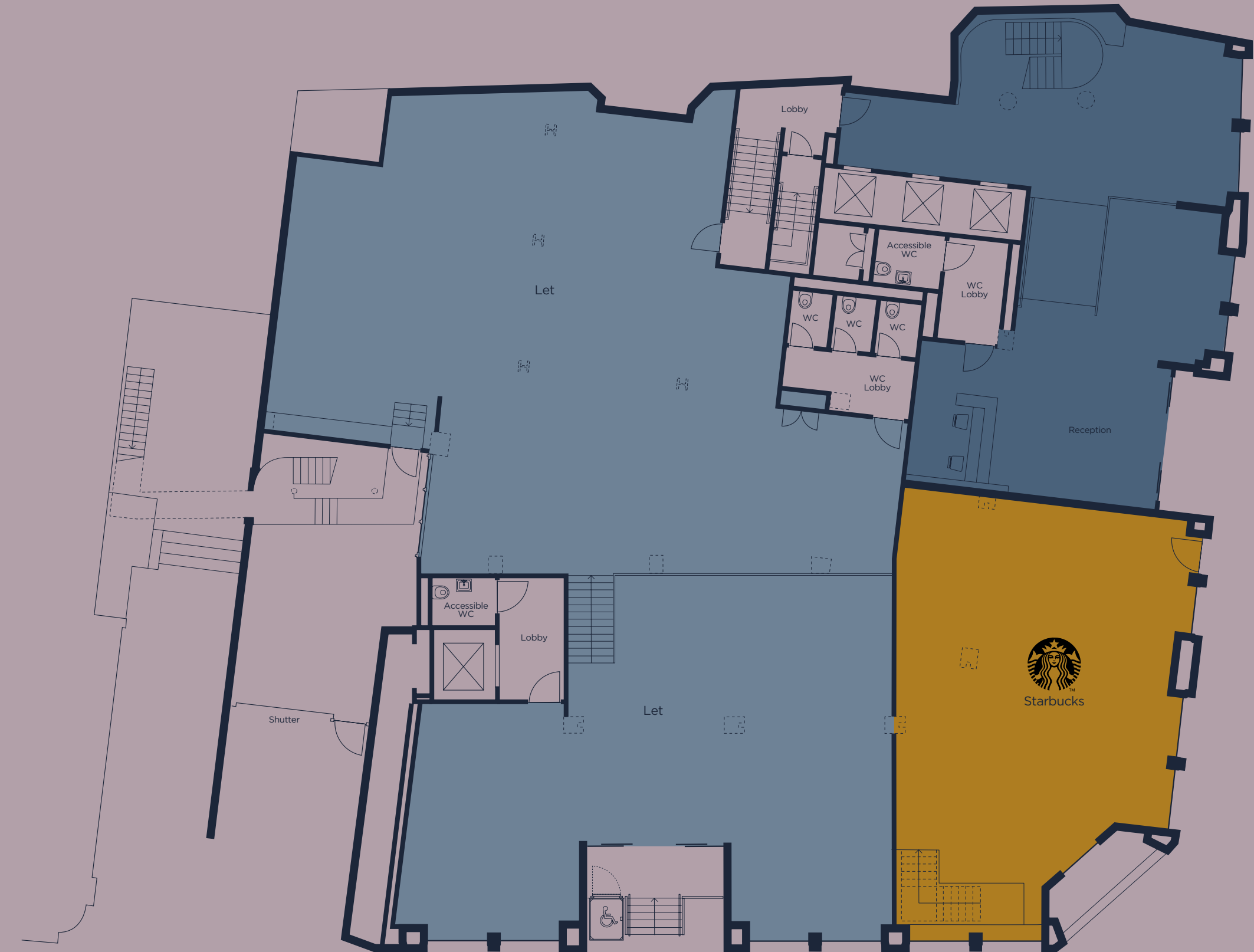
- 54 DESKS*
- MULTIPLE COLLABORATION AREAS
- 5 MEETING ROOMS
- 3 ZOOMS PODS
- 4 PRIVATE OFFICES
- 1 KITCHEN / BREAKOUT AREA

- Core
- Office
- Terrace

*ability to enhance desk numbers

LOWER GROUND FLOOR

GROUND FLOOR



Threadneedle Street

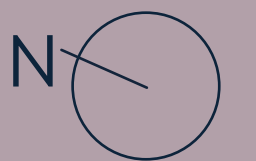
Threadneedle Street

Bartholomew Lane

Bartholomew Lane

- Core/Loading
- Changing rooms/showers
- Cycle storage
- Retail

- Core
- Office
- Reception
- Starbucks



OFFICE FLOOR



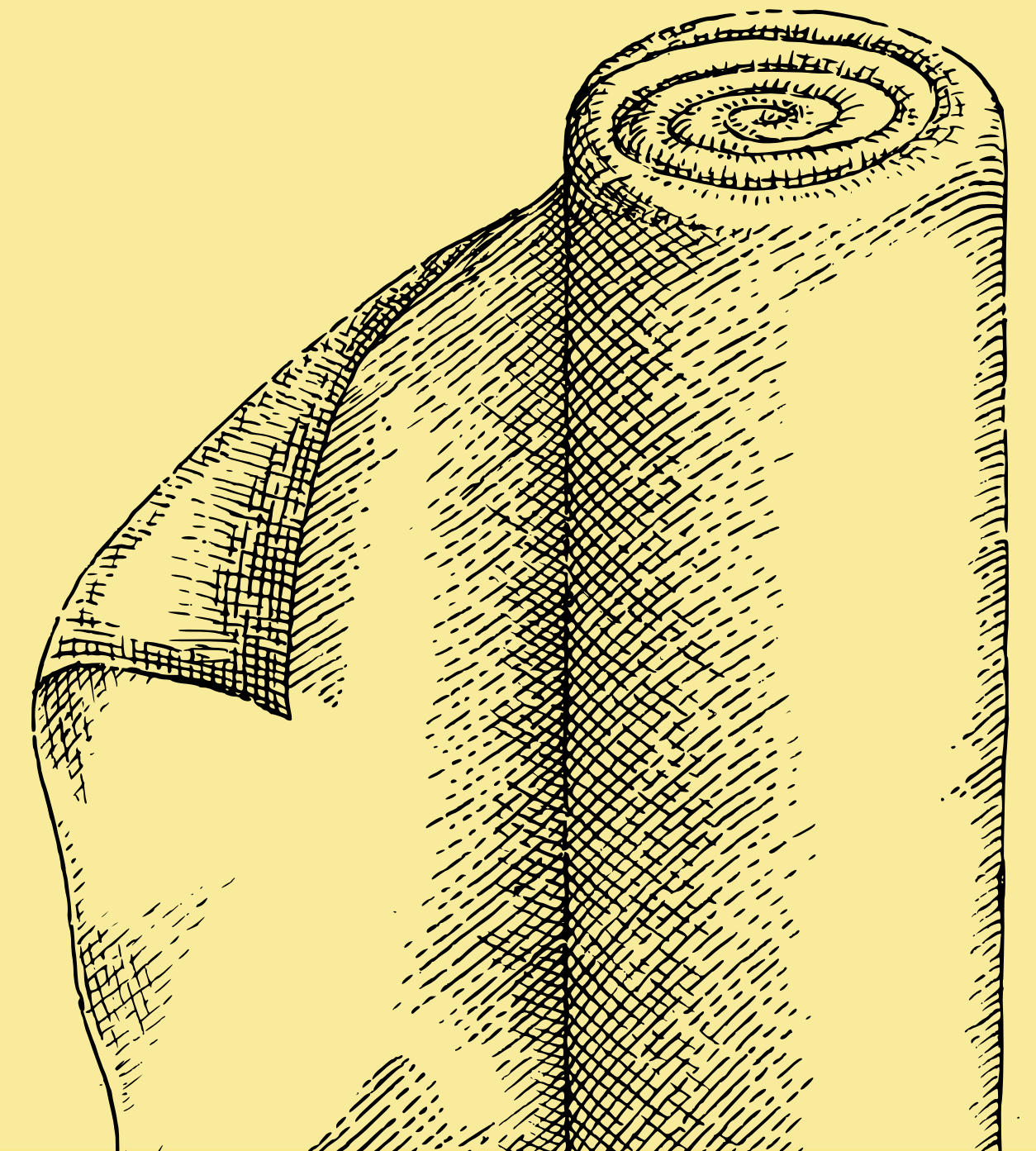
OFFICE FLOOR



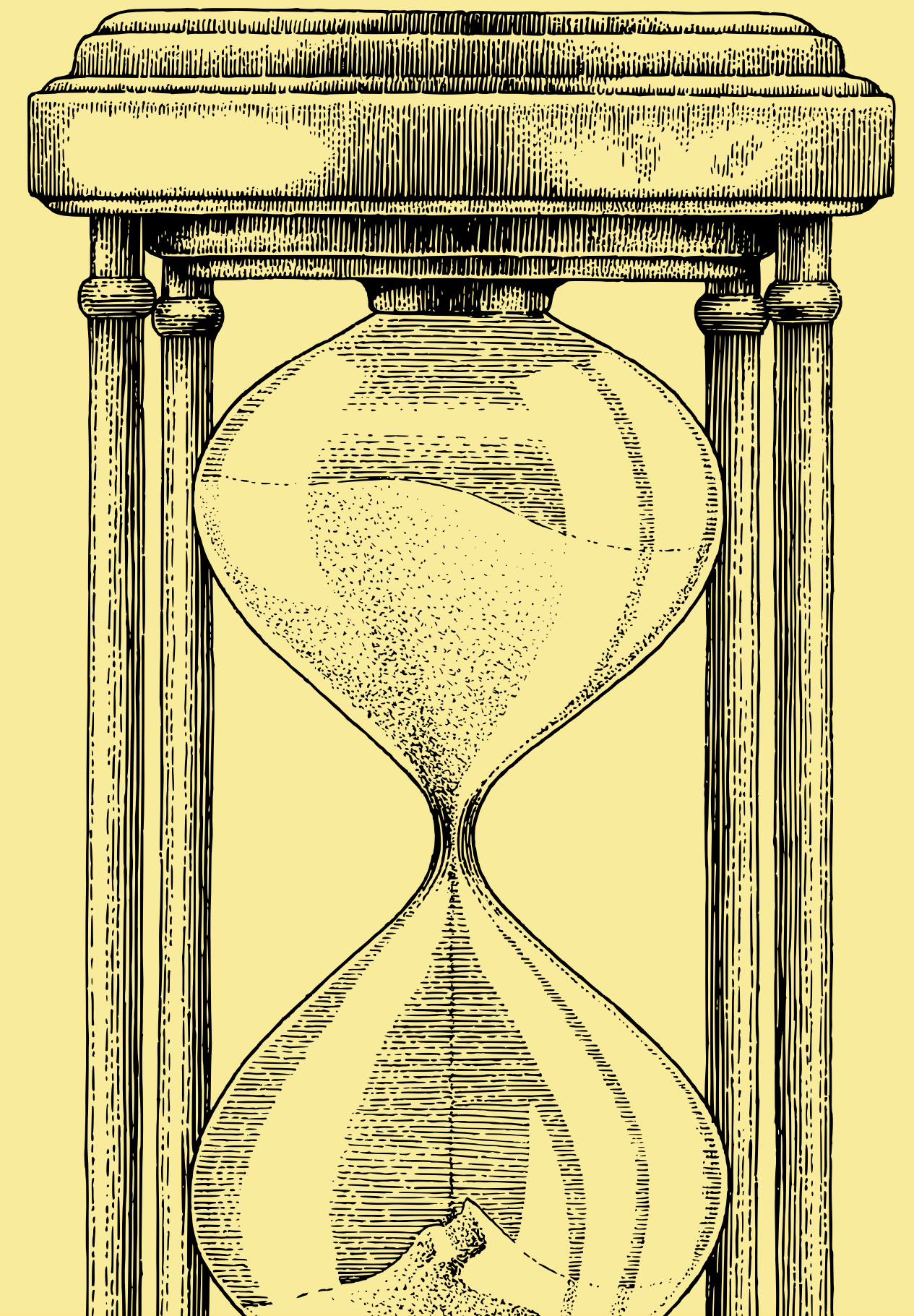
OFFICE FLOORS



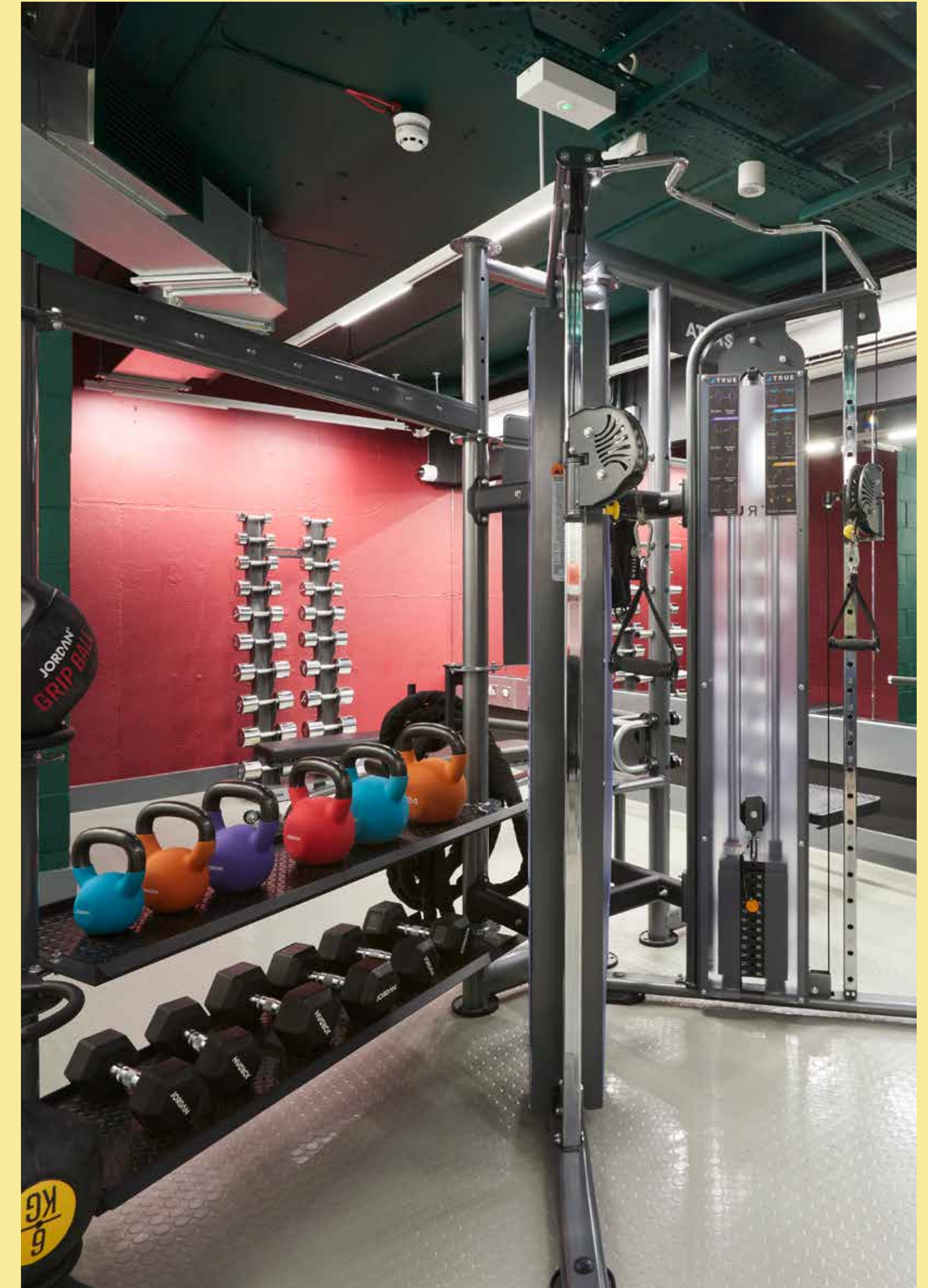
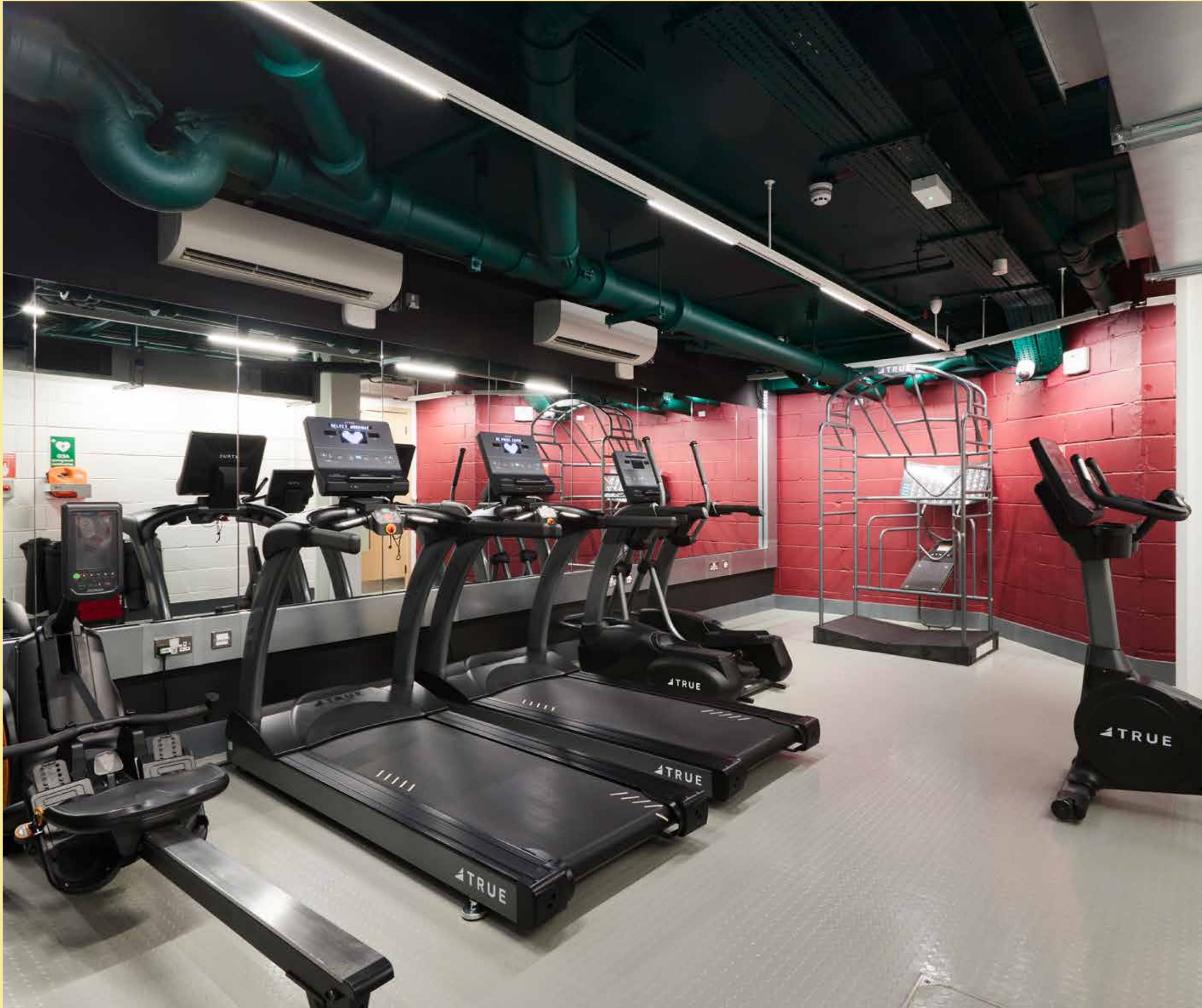
AMENITIES



AMENITIES

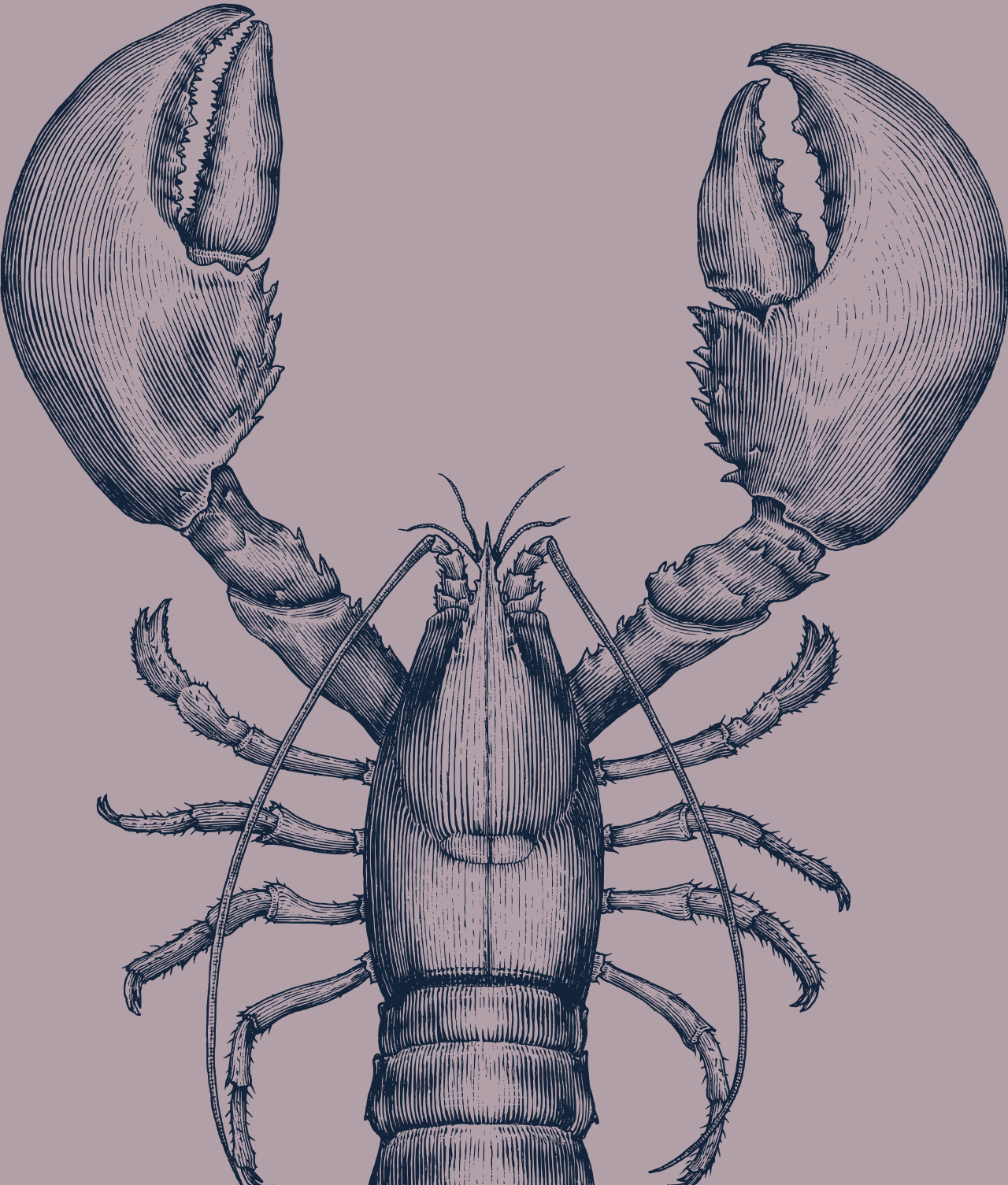


AMENITIES



ON THE PULSE

Delve into City life at its finest. Restaurants, bars, shops galore – from the biggest names to the cool independents, Threadneedle Street is in the thick of it all.







MOVE TO THE BEAT



From Bank



Bond Street
8 mins

Canary Wharf
11 mins

Kings Cross
11 mins

City Airport
21 mins



From Liverpool St.



Tottenham Court Road
10 mins

Stratford
8 mins

Heathrow
33 mins

Stansted
47 mins



From 62 Threadneedle

London Bridge
3 mins

Liverpool St.
2 mins

City Thameslink
4 mins

Blackfriars
5 mins



From 62 Threadneedle

Bank
1 min

Monument
4 mins

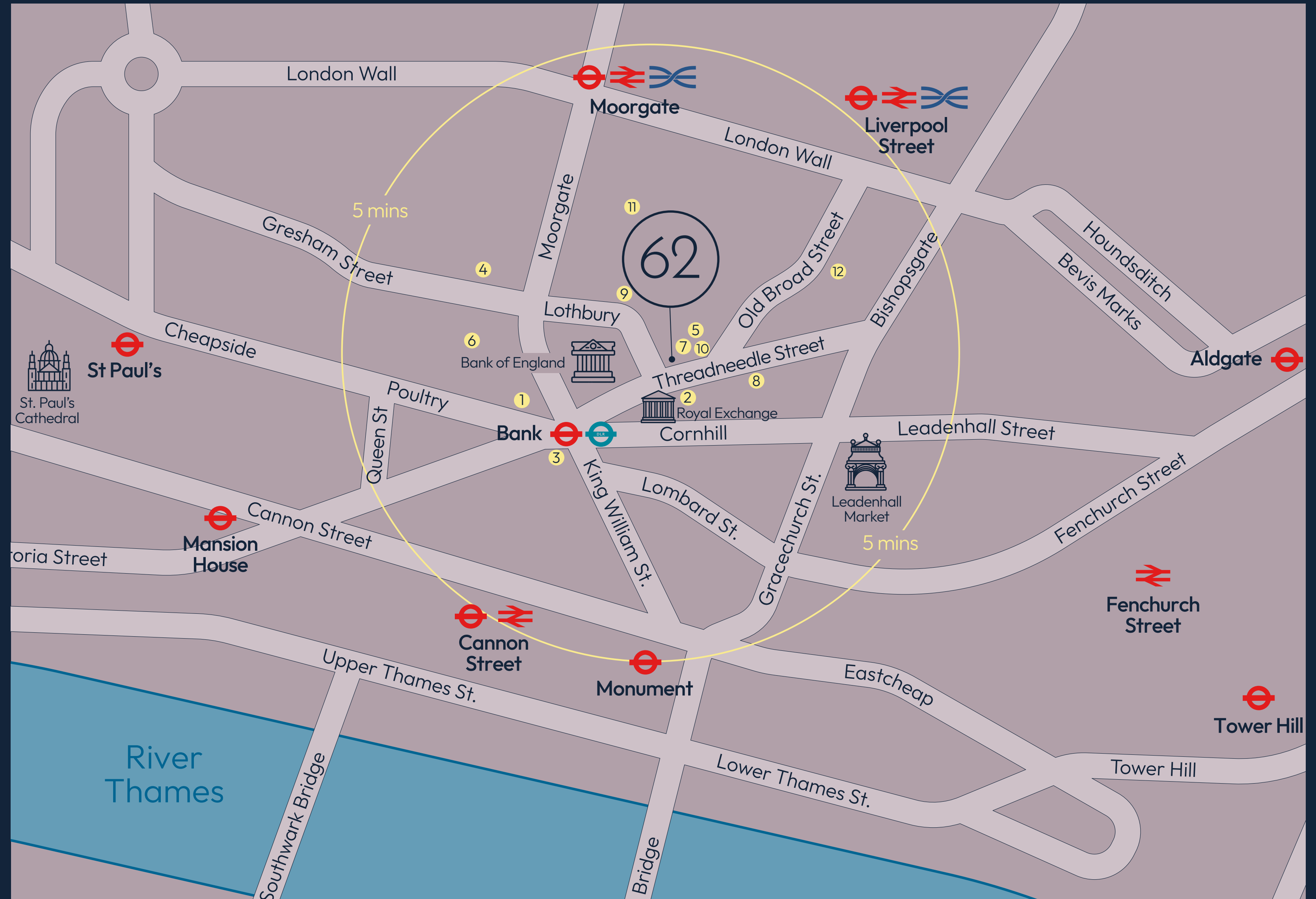
Cannon St.
6 mins

Liverpool St.
7 mins

*All times according to TFL

WITHIN 100 YARDS

- 1 The Ned:
 - The Nickel Bar
 - Kaia
 - Electric Bar & Diner
 - Lutyens Grill
 - Malibu Kitchen
 - The Parlour
- 2 The Royal Exchange:
 - Oeno
 - The Fortnum's Bar & Restaurant
 - Grind cafe-bar
 - Mister Lasagne
 - Laduree
 - City Roy London
- 3 1 Lombard Street
- 4 The Trading House
- 5 Le Relais de Venise l'Entrecôte
- 6 Goodman City
- 7 Brasserie Blanc
- 8 Merchant Taylors Hall
- 9 Mint Leaf Lounge
- 10 M Threadneedle Street
- 11 Natural Kitchen
- 12 City Social



CONTACT



THREADNEEDLE

FOR ANY FURTHER INFORMATION

Matthew Causer
mcauser@farebrother.com
+44 (0)7990 975 969

Mark Anstey
manstey@farebrother.com
+44 (0)7841 684 901

Harri Guy
harri.guy@aallsop.co.uk
+44 (0)7917 918 124

James Neville
James.Neville@allsop.co.uk
+44 (0)7789 658 540

62THREADNEEDLE.COM

Misrepresentation Act: Farebrother and Allsop gives notice that these particulars are set out as a general outline only for the guidance of intending Purchasers or Lessees and do not constitute any part of an offer or contract. Details are given without any responsibility and any intending Purchasers, Lessees or Third Party should not rely on them as statements or representations of fact, but must satisfy themselves by inspection or otherwise as to the correctness of each of them. No person in the employment of Farebrother and Allsop has any authority to make any representation or warranty whatsoever in relation to this property.