

Newly Refurbished Tower Space

NEWTON
PERKINS



2 London Wall Place

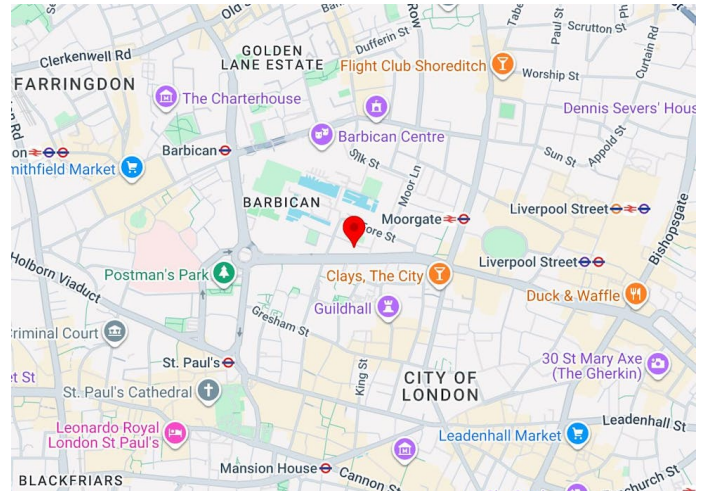
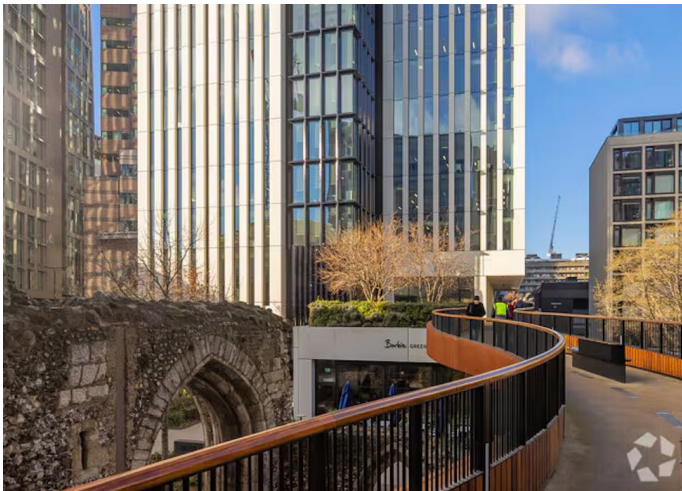
London, EC2Y 5AU
5,647 SQ FT

TO LET

- Manned reception & concierge facilities
- End of trip facilities including bike racks and showers
- Newly refurbished & fitted office space
- Excellent Natural Light
- EPC rating - B

+44 (0) 20 7456 0700
newtonperkins.com

Newly Refurbished Tower Space



Summary

Available Size	5,647 sq ft / 524.62 sq m
Rent	Rent on application
Rates Payable	£34.62 per sq ft
Service Charge	£23.52 per sq ft
EPC	B (30)

Description

2 London Wall is a Tower Building set within a vibrant mixed-use destination, the building offers premium workspace defined by expansive floorplates, exceptional natural light, and high-quality finishes throughout.

Surrounded by landscaped public spaces, cultural landmarks, and an array of cafés, restaurants, and retail, 2 London Wall Place provides an inspiring environment that supports productivity, wellbeing, and connectivity—just moments from excellent transport links and the energy of the Square Mile.

Location

2 London Wall Place is located in a prime location with access to key stations such as Liverpool Street, Barbican, Moorgate, and Bank.

Accommodation

The accommodation comprises the following areas:

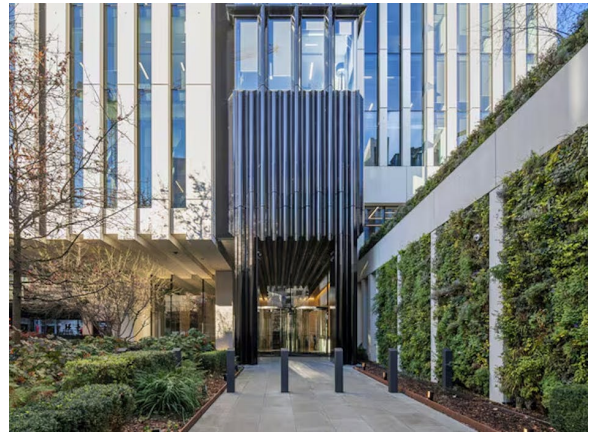
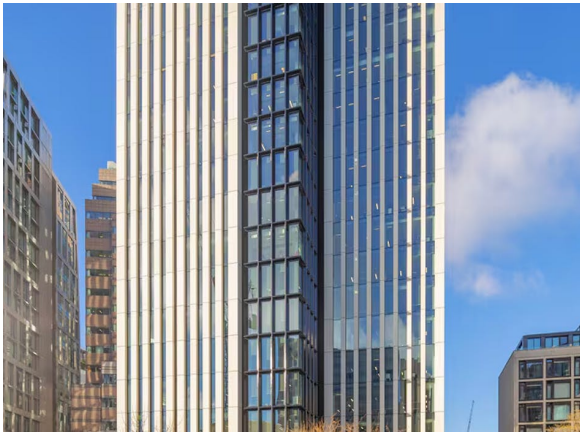
Name	sq ft	sq m	Availability
4th - North	5,647	524.62	Coming Soon
Total	5,647	524.62	

Terms

New Lease available direct from the Landlord

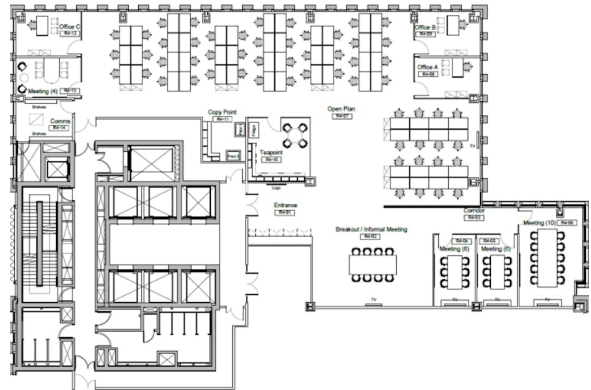
Jonathan Beilin
0207 456 0727
jb@newtonperkins.com

Leo Gough
07546 695 724
lg@newtonperkins.com



+44 (0) 20 7456 0700
newtonperkins.com





+44 (0) 20 7456 0700
newtonperkins.com