

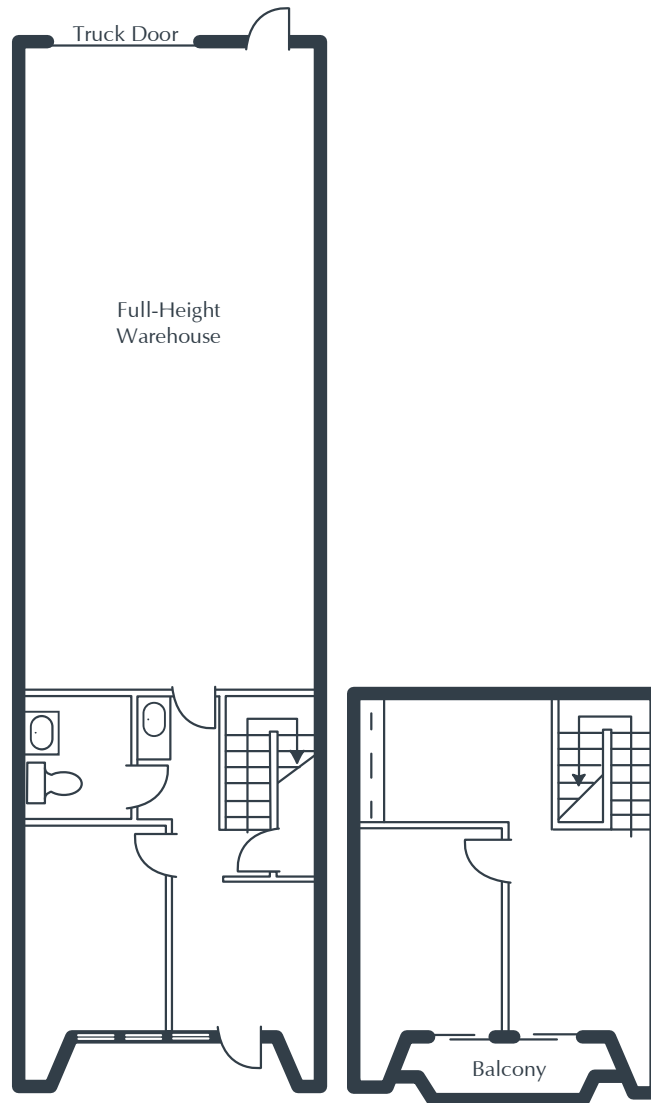
NEWPORT FREEWAY BUSINESS PARK

3176 Pullman Street, Suite 112
Costa Mesa, CA

2,080 Square Feet

\$1.75 SF/MO

Triple Net



NOTES

- Reception
- 2 Window Offices
- Restroom
- Coffee Bar
- Storage Closet
- Open Work Area
- Ground-Level Truck Door
- Approximately 880 sq. ft. of Full-Height Warehouse
- Part of a Professionally Managed Business Park

Created by Olen Commercial Realty Corp., 2022.
Information is not to be published or copied without
written approval. Square footage and floor plans are
estimates and should be separately verified. All rates,
terms, floor plans, and building facts are subject to
change without notice.

ea 02.18.2026

LAURA PRESTON-FAYERMAN

Senior Leasing Director

949.719.7205

lfayerman@olen.com



Seven Corporate Plaza

Newport Beach, CA

949.644.6536

www.olen.com