

TO LET

408 SQ FT (38 SQ M)

KALMARs

COMMERCIAL

020 7403 0600



47 PECKHAM PARK ROAD, LONDON, GREATER LONDON, SE15 6TU

LOCATION:

Positioned on the well-known Peckham Park Road, this property benefits from its highly accessible location within Peckham. The road itself is a key route that sees a constant flow of local residents, ensuring great footfall for any business.

DESCRIPTION:

Situated along Peckham Park Road, 47 Peckham Park Road offers a strong retail opportunity with clear street frontage in a busy local parade. The property falls under Class E, making it suitable for a wide range of uses.

The unit provides a well-proportioned ground floor space. It works well for cafés, boutiques, convenience-style operations, and other retail users. The property also benefits from good ceiling height and a straightforward open-plan configuration.





SIZE: 408 Sq Ft (38 Sq M)



RENT: £10,000 pa



COSTS:

VAT: VAT is payable on the rent and service charge.



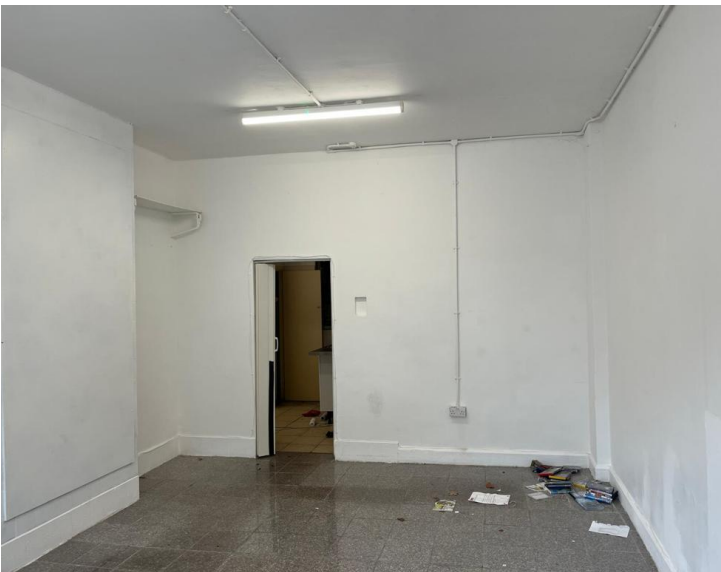
VIEWINGS:

By arrangement with the owner's sole agents KALMARs Commercial.



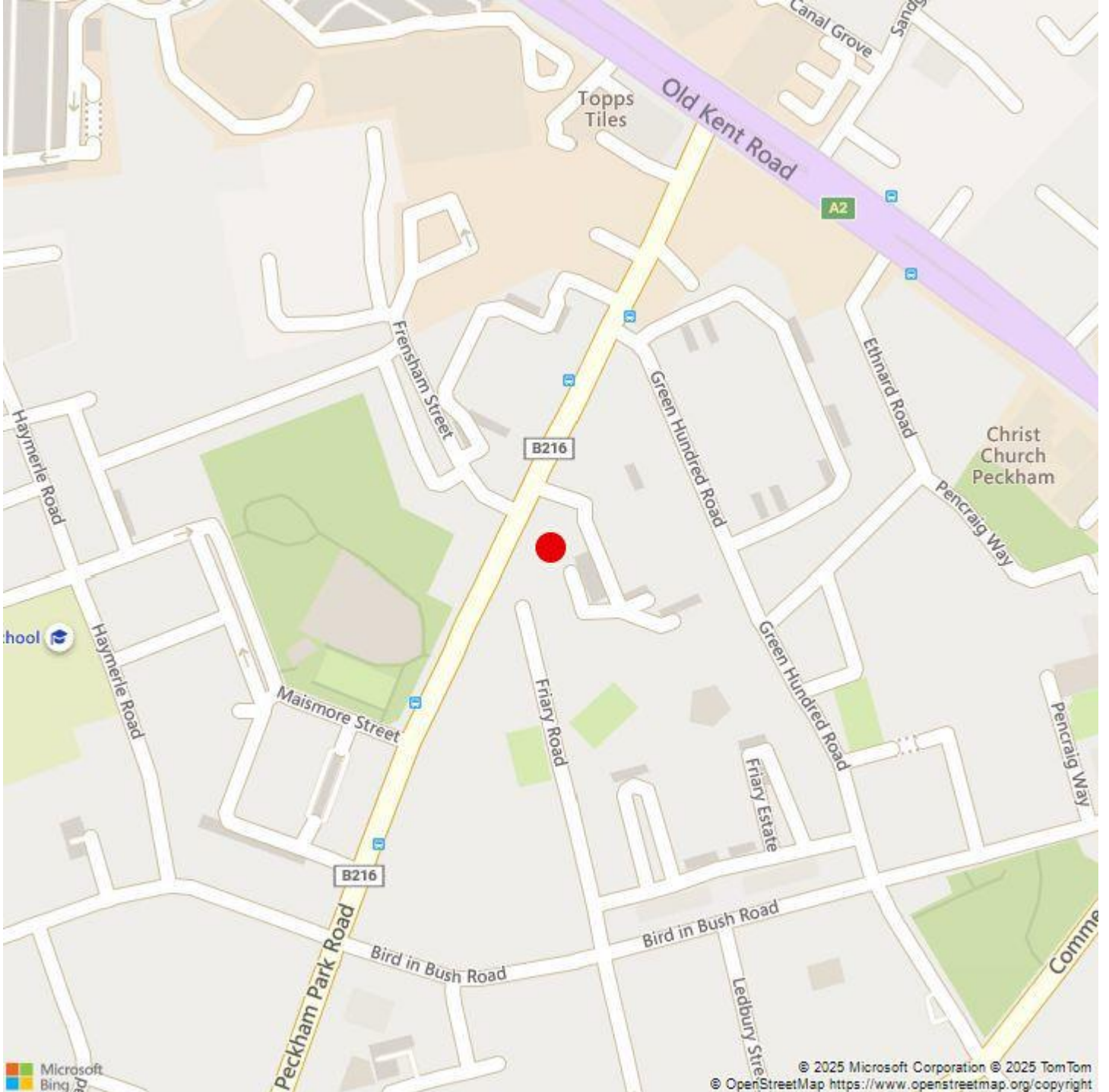
CONTACT:

Jack Scotter
0207 403 0600
jacks@kalmars.com



KALMARs

SOUTH LONDON'S LEADING AGENTS



All properties are offered subject to contract and availability. These particulars are believed to be correct when published, but we cannot accept any liability whatsoever for any misrepresentation made either in these particulars or orally. Intending purchasers or tenants are strongly advised to make their own enquiries to check these particulars to satisfy themselves that the property is suitable for their purchase. They may be subject to VAT.