

The Dime Savings Bank of Brooklyn

9 DeKalb Avenue, Downtown Brooklyn





9 DeKalb with its hexagonal design and rich materiality of bronze and glass, this cinematic tower will soar over 1,000 feet high, becoming the tallest tower in Brooklyn.

9 Dekalb offers a rare opportunity for retailers to align themselves with either the famed Neo-Classical Dime Savings Bank or Brooklyn on Albee Square or the breathtaking glass and bronze of the tower's podium on Flatbush Avenue.

Life Time and Life Time Work will occupy over 100,000 square feet at 9 Dekalb Avenue. Entering off of Flatbush Avenue Life Time will operate over 85,000 square feet of fitness and amenity space for the residents and community along with over 15,000 square feet for the first Life Time Work in New York City.

9 Dekalb anchors the corner of DeKalb Avenue and Fulton Street, two of the five streets intersecting to create Albee Square—the cornerstone of the bold reimagining of Downtown Brooklyn.

Albee Square, the area surrounding 9 DeKalb, is a vibrant gathering place for the community focused on public transportation accessibility and walkability, green streetscapes, and colorful art installations.



The area surrounding Fulton Mall is also undergoing a multi-phase plan to increase accessibility for bikers and pedestrians alike



9 DeKalb offers unparalleled access to Southern Brooklyn's consumer base with all of the key residential neighborhoods two subways stops or less away.

69.5K

Residents live within 1 mile

4.5M

Annual Visitors to cultural attractions in Downtown Brooklyn

37K

Employees work within a 10-minute walk

11

Higher Education Institutions

60K

Students





The Dime Savings Bank of Brooklyn at 9 DeKalb is a once in a generation opportunity to inspire creativity in the heart of Downtown Brooklyn.

Spanning over 45,000 square feet, the Dime Savings Bank of Brooklyn's storied vaults, clocks and balconies lend themselves to retailer's visions and the sensitive repurposing of historic structures.



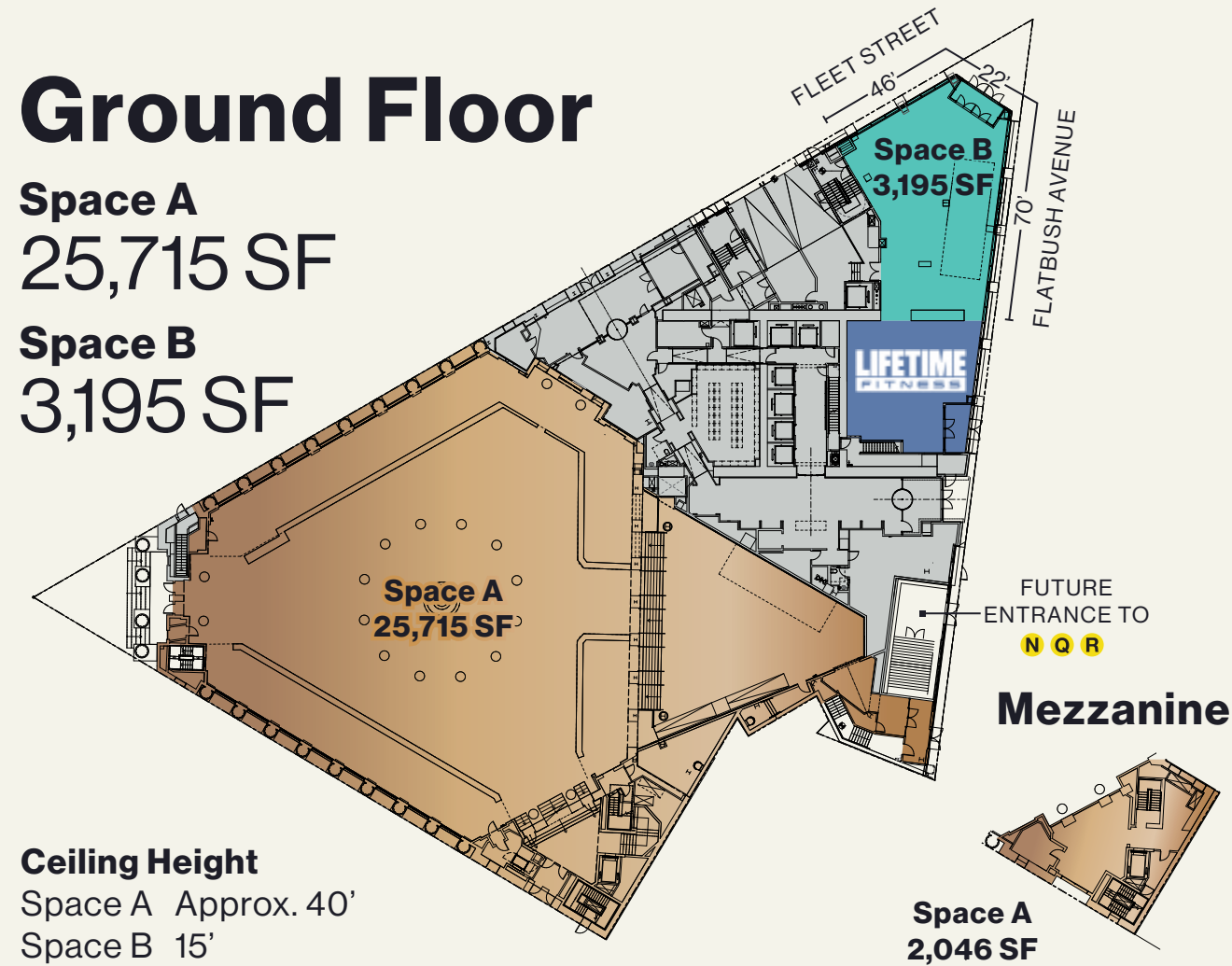


CONCEPTUAL RENDERING

Ground Floor

Space A
25,715 SF

Space B
3,195 SF



Ceiling Height

Space A Approx. 40'
Space B 15'

- The interior of The Dime Savings Bank of Brooklyn is a landmark
- The Lower Level contains two large safety deposit vaults
- Ground Floor Space A has entrances on Albee Square, Flatbush Avenue and DeKalb Avenue
- The interior of the Dime Saving Bank includes an original overlook balcony
- Space A will have access to two freight loading dock berths on Fleet Street
- Life Time will be occupying over 100,000 SF from the Ground Floor and Lower Level through Sixth Floor

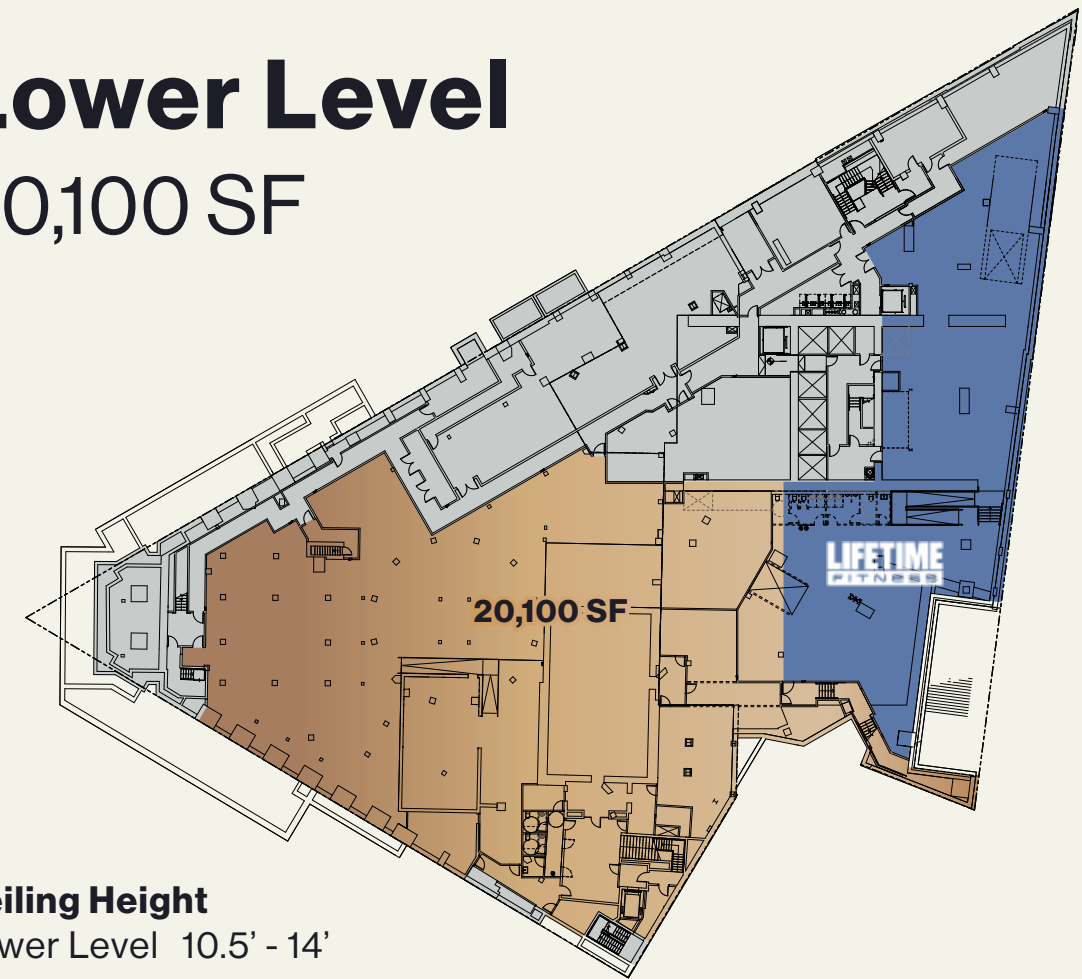
■ RETAIL SPACE A ■ RETAIL SPACE B ■ MECH/BOH/RESI

Lower Level

20,100 SF

Ceiling Height

Lower Level 10.5' - 14'

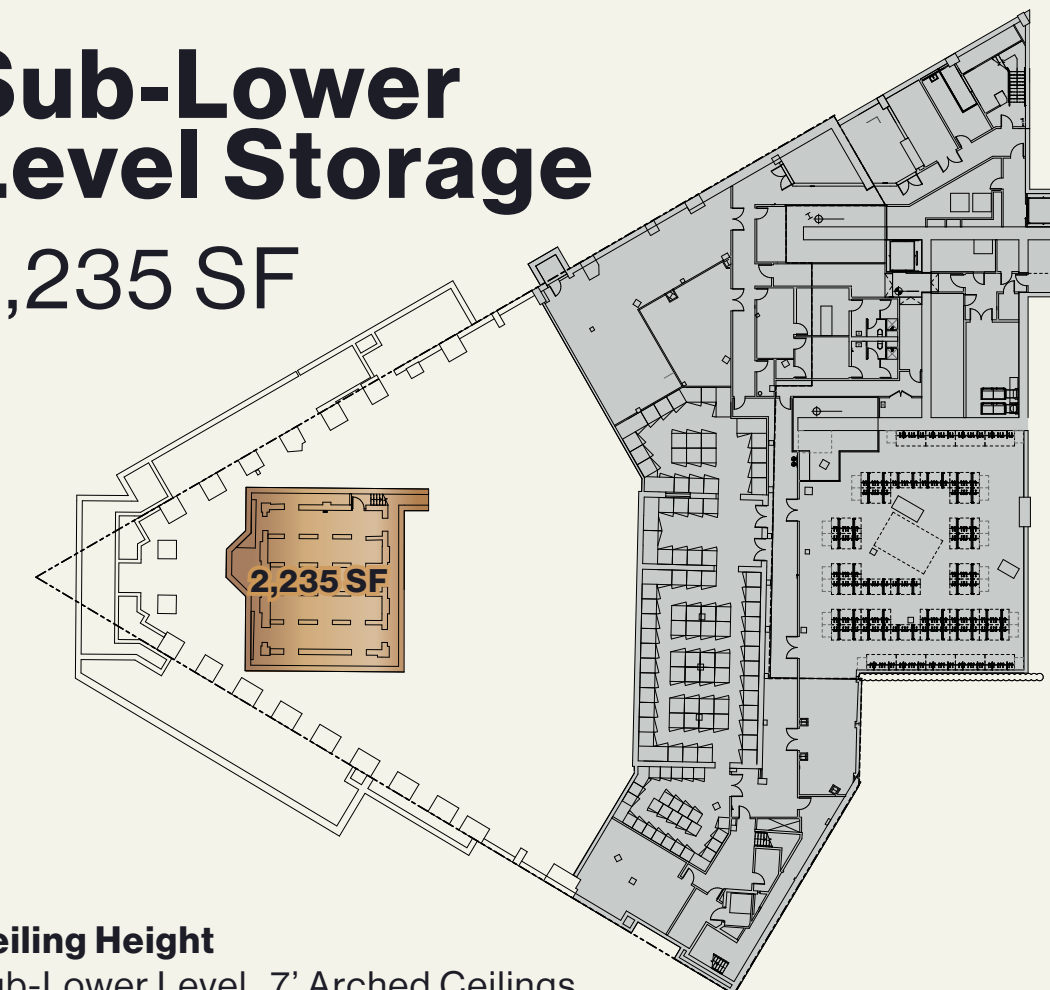


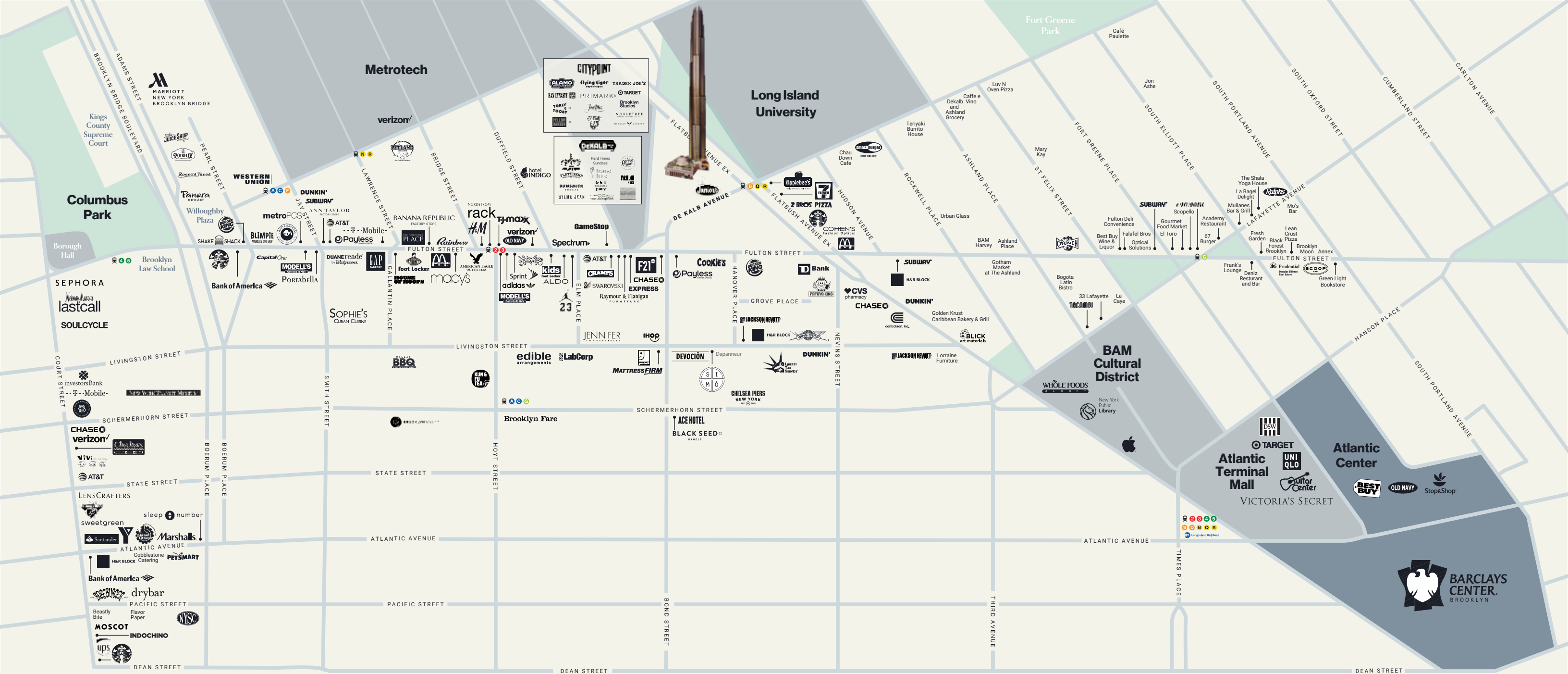
Sub-Lower Level Storage

2,235 SF

Ceiling Height

Sub-Lower Level 7' Arched Ceilings





Contact

Pierce Thompson

pierce.thompson@nmrk.com

212.916.3361

Jackie Totolo

jackie.totolo@nmrk.com

212.916.3392

Peter Whitenack

peter.whitenack@nmrk.com

212.331.0128

NEWMARK

© 2022 NEWMARK. The information contained herein has been obtained from sources deemed reliable but has not been verified and no guarantee, warranty or representation, either express or implied, is made with respect to such information. Terms of sale or lease and availability are subject to change or withdrawal without notice.