



FOR LEASE INQUIRES CALL

JIM LAING
SENIOR DIRECTOR

+1 619 525 2909

jim.laing@cushwake.com



WILLOW CREEK PLAZA

9820 WILLOW CREEK ROAD, SAN DIEGO, CA 92131

Scripps Ranch Class A Office Building

BUILDING HIGHLIGHTS

WILLOW CREEK PLAZA



OUTDOOR SEATING AND TRAILS



OPEN AIR GREEN LOBBY



RETAIL & FOOD
SERVICES
ADJACENT TO SITE



BALCONY



SHOWERS



NAUTRAL
LIGHTING



PARKS
& RUNNING TRAILS NEARBY

Willow Creek Plaza is a 79,000 SF, 4-story Class A office building located immediately off the I-15 freeway on the Carrol Canyon Rd exit. The atrium style building features a serene setting in the Scripps Ranch Business Park complete with private balconies, tropical garden courtyard, showers and gym facilities. The property is within walking distance to the area's numerous local eateries, shops as well as running trails and parks.

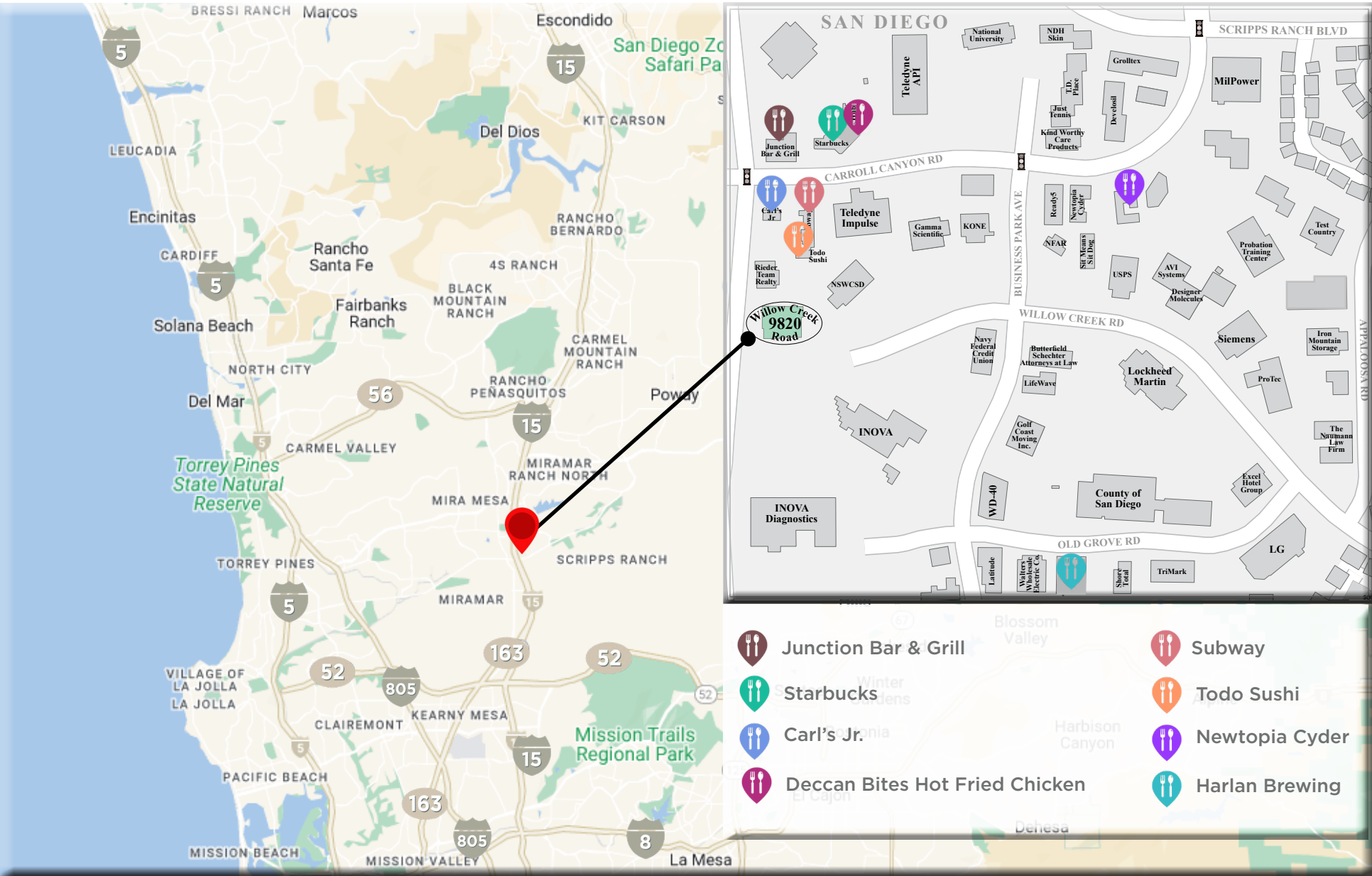


- Class A Suburban Office
- 4-Stories
- Garden Atrium
- Elevator Served
- Showers & Gym Facilities
- 4 Stalls per 1,000 SF Parking Ratio
- On-Site Ownership and Management

MAP & AMENITIES



Willow Creek Plaza is centrally located in San Diego County along the I-15 Corridor in the Scripps Ranch Business Park. The park features an abundance of local eateries, breweries, salons and other retailers.



OFFICE SUITE AVAILABILITY



ENTRANCE



9820 WILLOW CREEK RD



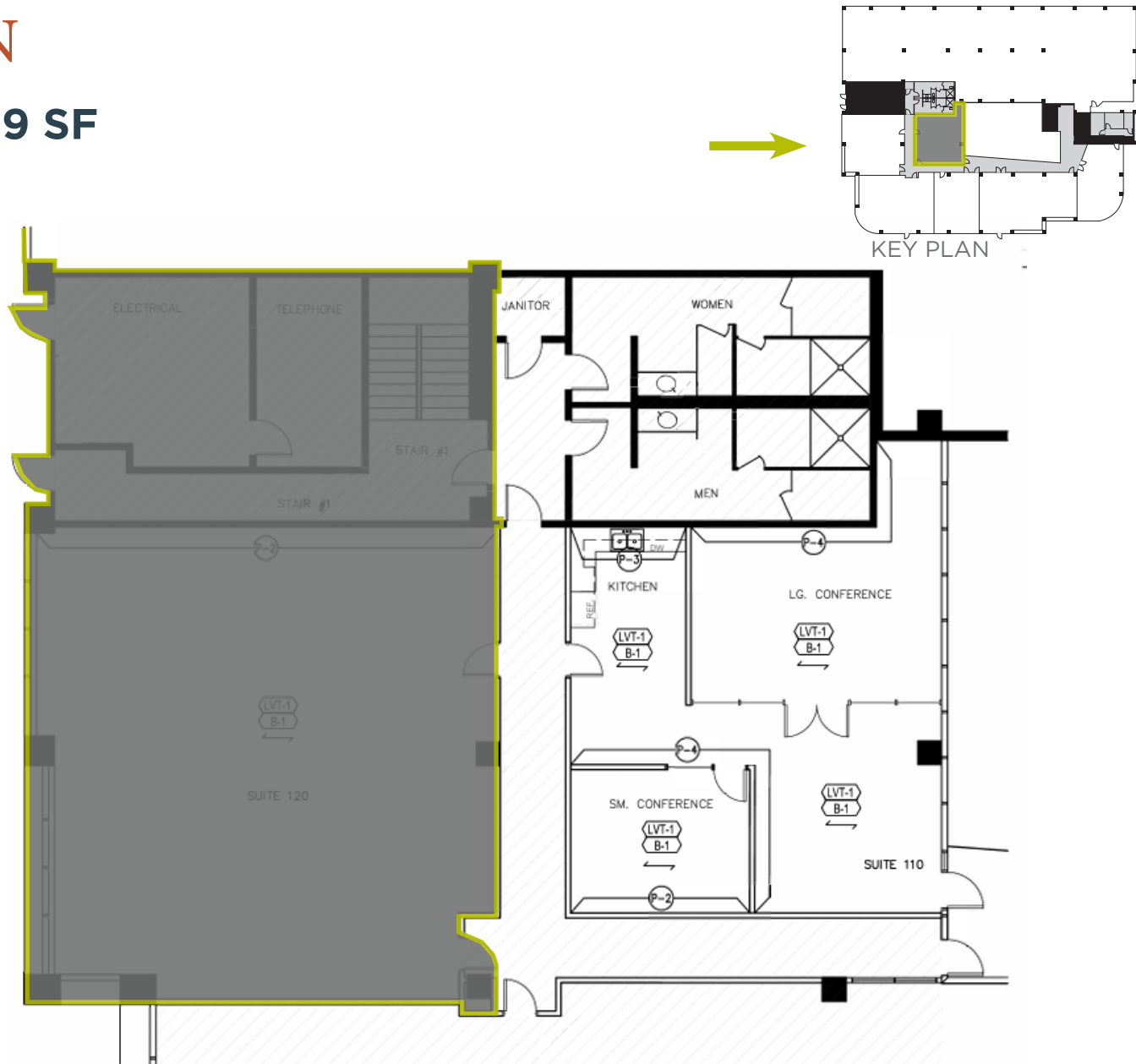
INDOOR ATRIUM

SUITE	SF	RATE / SF / MONTH	FLOOR PLAN LINK
110	1,459 SF	\$2.85 / SF / MONTH + ELECTRIC	View Suite 110
120	2,013 SF	\$2.85 / SF / MONTH + ELECTRIC	View Suite 120
350	3,769 SF / 12,006 SF	\$2.85 / SF / MONTH + ELECTRIC	View Suite 350
380	8,236 SF / 12,006 SF	\$2.85 / SF / MONTH + ELECTRIC	View Suite 380
445	817 SF	\$2.85 / SF / MONTH + ELECTRIC	View Suite 445
450	2,341 SF	\$2.85 / SF / MONTH + ELECTRIC	View Suite 450
455	1,713 SF	\$2.85 / SF / MONTH + ELECTRIC	View Suite 455
470	880 SF	\$2.85 / SF / MONTH + ELECTRIC	View Suite 470

FLOOR PLAN

SUITE 110 | **1,459 SF**

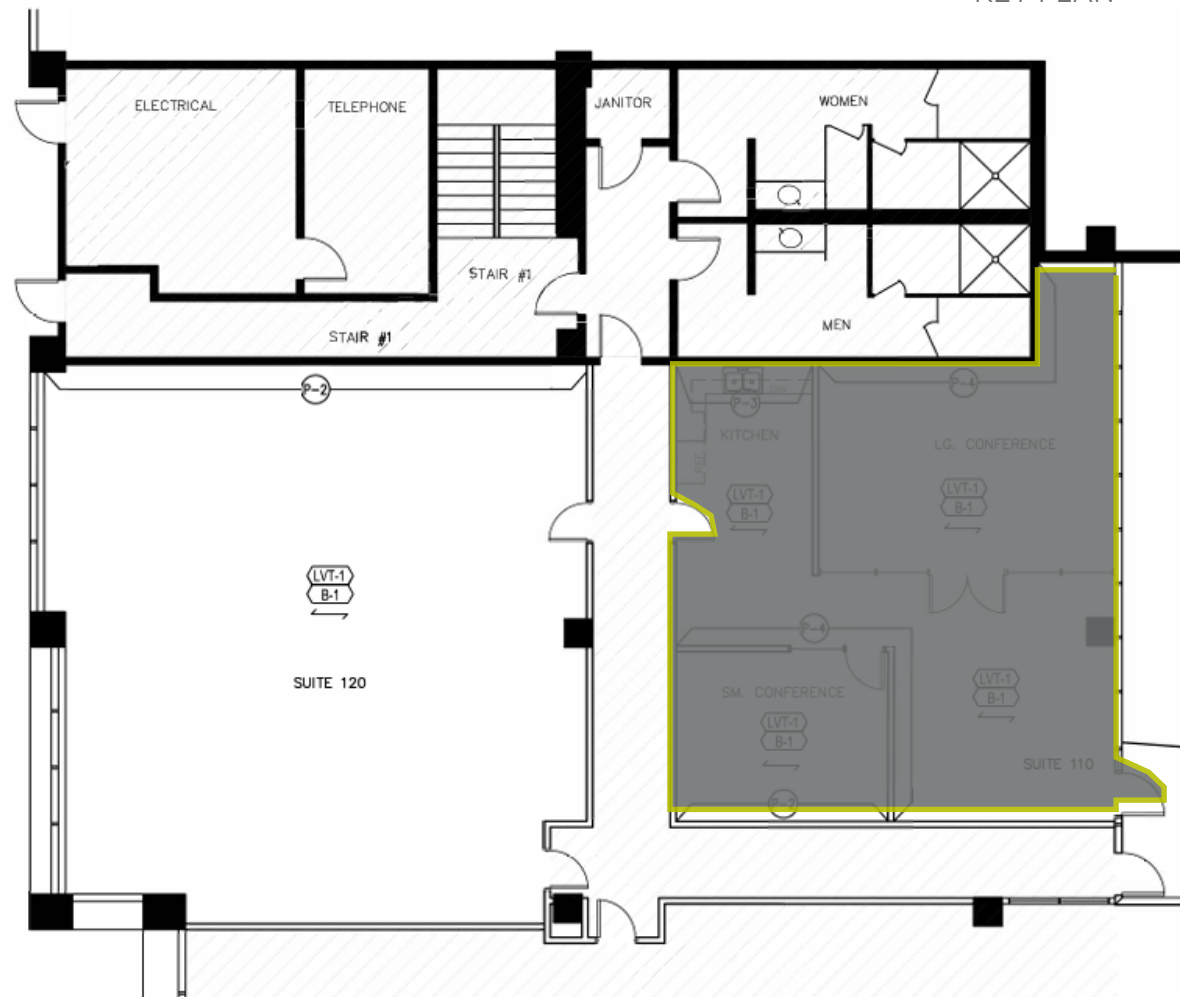
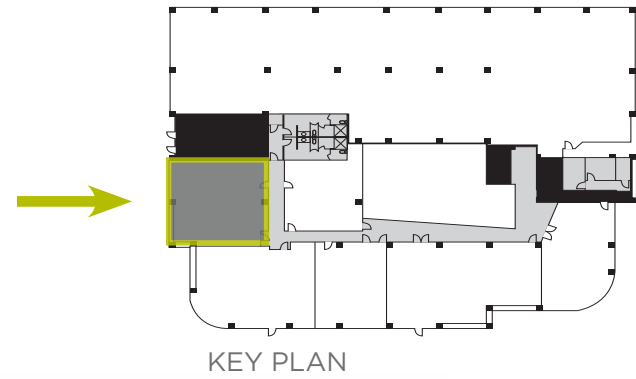
- Reception Area
- Conference Room
- Office or 2nd Conference Room
- Kitchen



FLOOR PLAN

SUITE 120 | **2,013 SF**

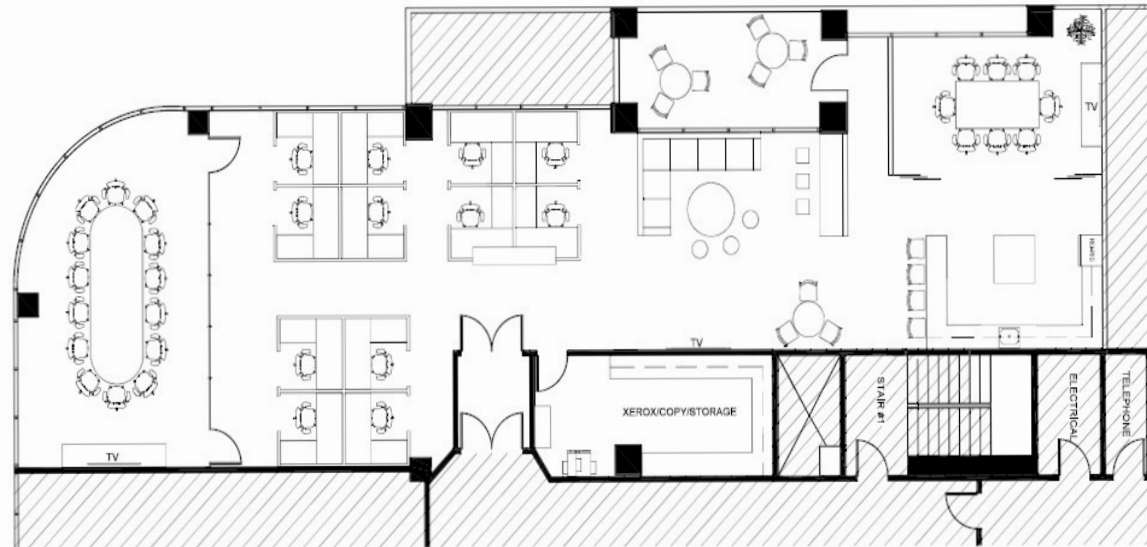
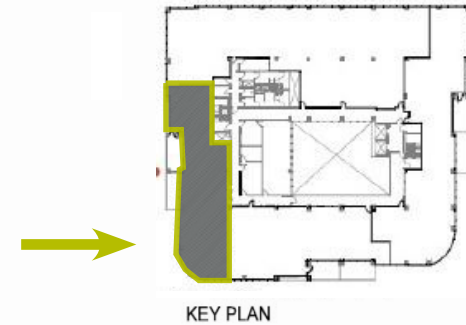
- Improved Collaborative Open Area



FLOOR PLAN

SUITE 350 | 3,769 SF

- Shell Condition
- Build To Suit Opportunity
- Double Door Entry
- Great Natural Light w/ Park Views
- Newly Renovated Corridors & Restrooms
- Private Deck



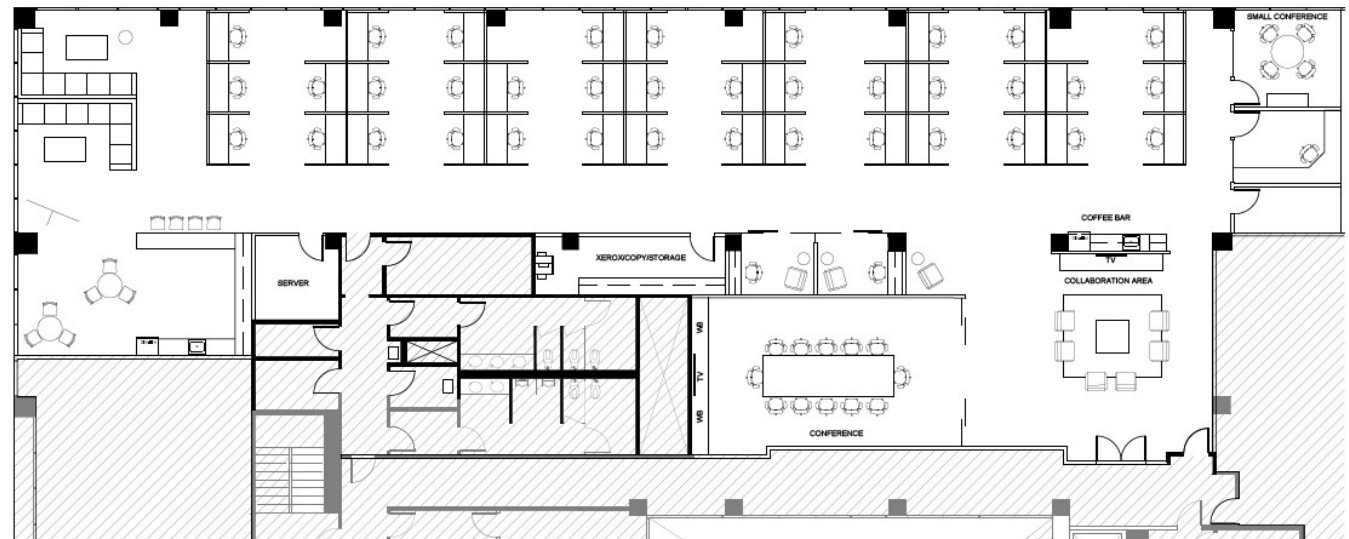
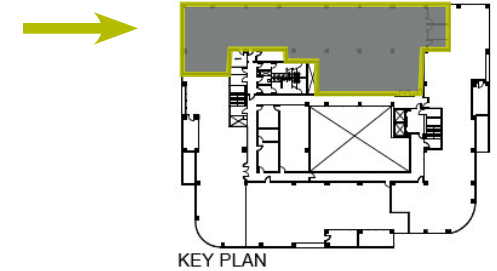
HYPOTHETICAL
SPACE PLANS

Suites 350 & 380 can be combined to 12,006 SF

FLOOR PLAN

SUITE 380 | 8,236 SF

- Shell Condition
- Build To Suit Opportunity
- Entry Off Elevator Lobby
- Newly Renovated Corridors & Restrooms



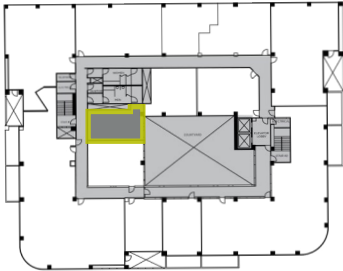
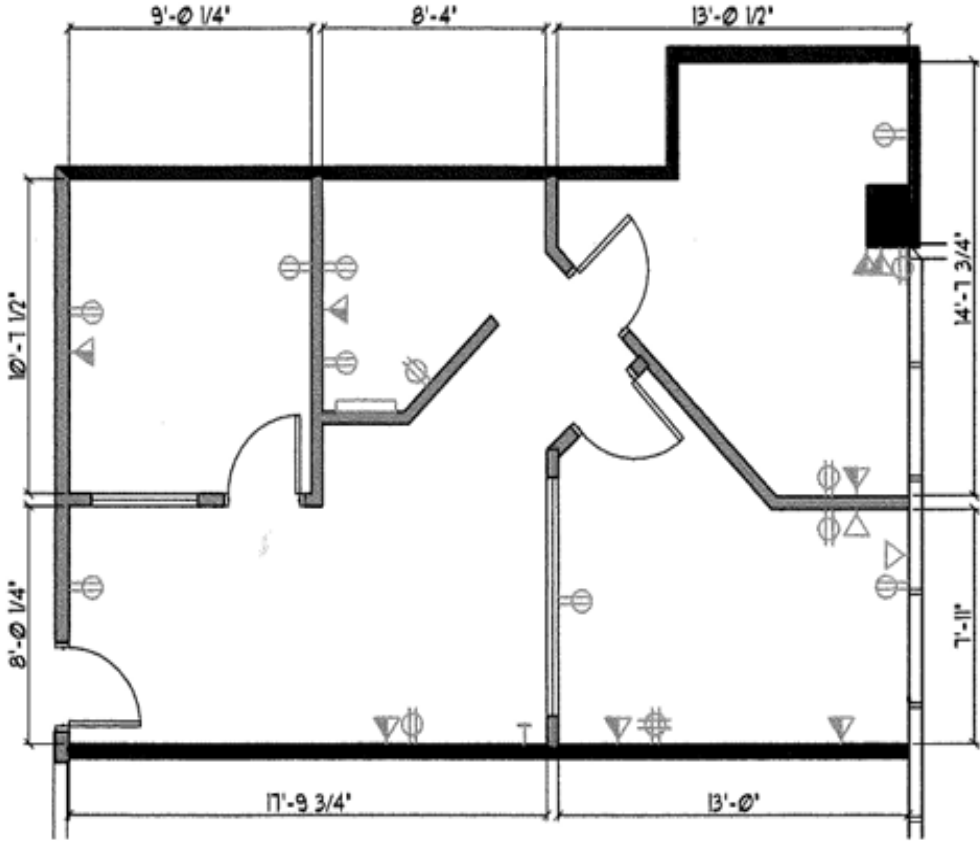
HYPOTHETICAL
SPACE PLANS

Suites 350 & 380 can be combined to 12,006 SF

FLOOR PLAN

SUITE 445 | 817 SF

- Reception
- Conference Room
- 2 Offices
- File / Copy Room

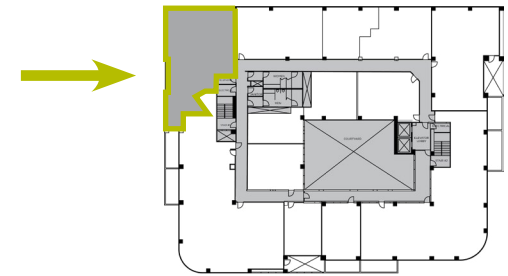
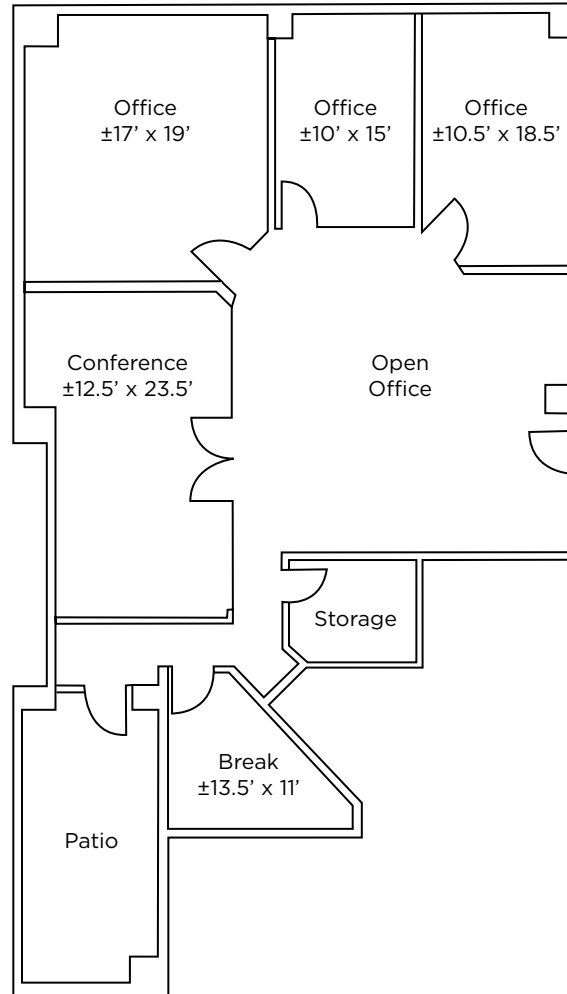


Key Plan

FLOOR PLAN

SUITE 450 | 2,341 SF +/-

- Available May 1, 2026
- Open reception / work area
- 3 window line offices
- Large glass-walled conference room
- Server room
- Breakroom
- Balcony



Key Plan

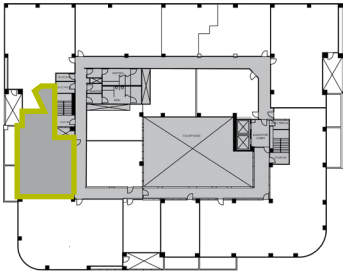
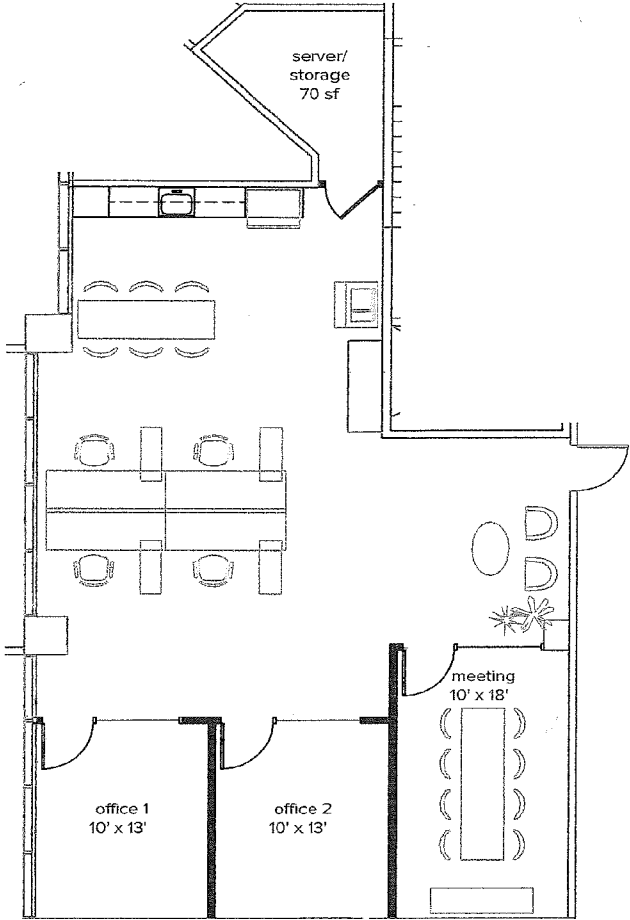
FLOOR PLAN

SUITE 455 | **1,713 SF +/-**

- Reception
- Conference Room
- 2 Private Offices
- Open Work Area
- Open Kitchenette / Break Area

HYPOTHETICAL SPACE PLAN

(Size subject to Final Measurements)

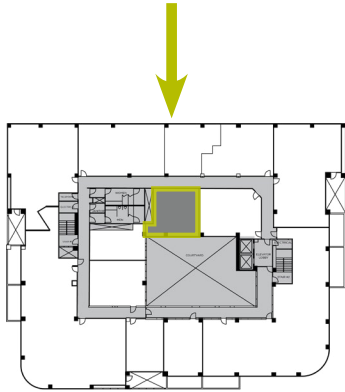


Key Plan

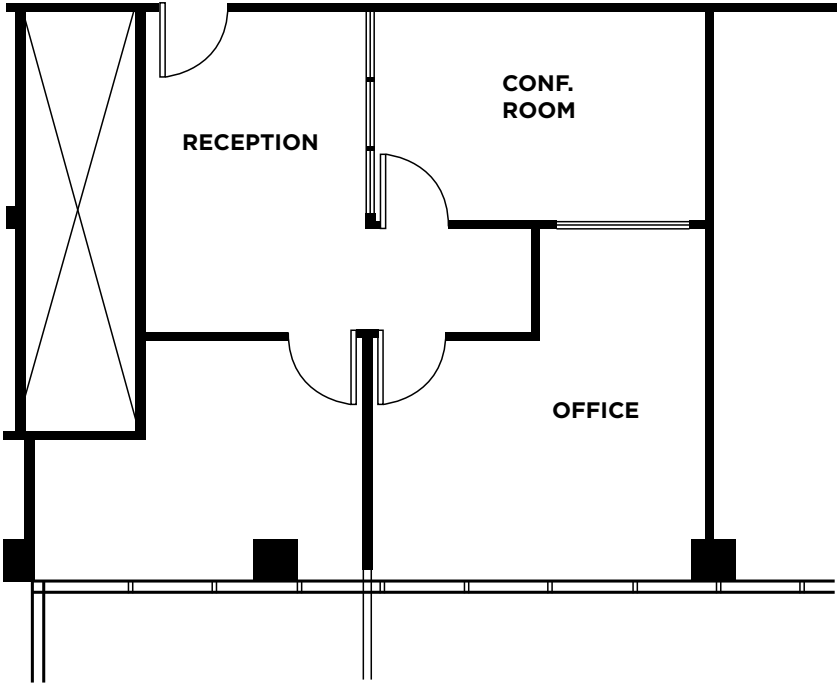
FLOOR PLAN

SUITE 470 | 880 SF

- Reception
- Conference Room
- 2 Offices



Key Plan





CONTACT BROKER

JIM LAING

SENIOR DIRECTOR

Lic. 857513

Direct +1 619 525 2909

jim.laing@cushwake.com

cushmanwakefield.com

Developed, Owned and Managed By
The Currie Partners

www.curriepartners.com

Matt Currie

Direct + 1 858 271 7050

matt@curriepartners.com