

OFFICE FOR LEASE

50 VASHELL WAY | ORINDA, CA



LISTING DATA

- On-Site Parking Available
- Immediate Access to BART & Highway 24
- Great Visibility
- Walking Distance to Coffee Shops & Restaurants

LEASE RATE

- Call Exclusive Agents

EXCLUSIVE AGENTS

JOE MCGLYNN

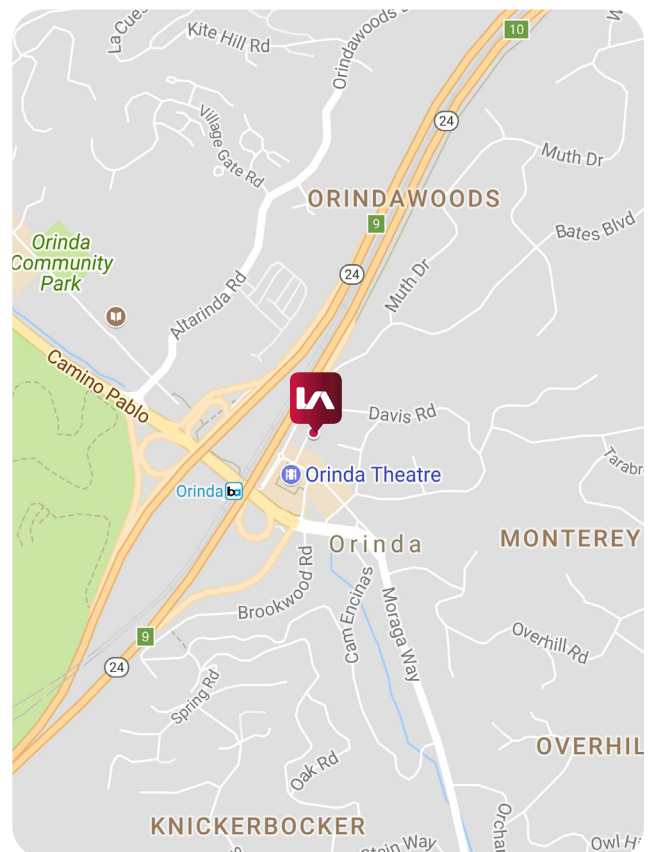
jmcclynn@lee-associates.com

510.903.7612 | LIC# 01911689

DAVE MCCARTY

dmccarty@lee-associates.com

510.903.7602 | LIC# 01748283

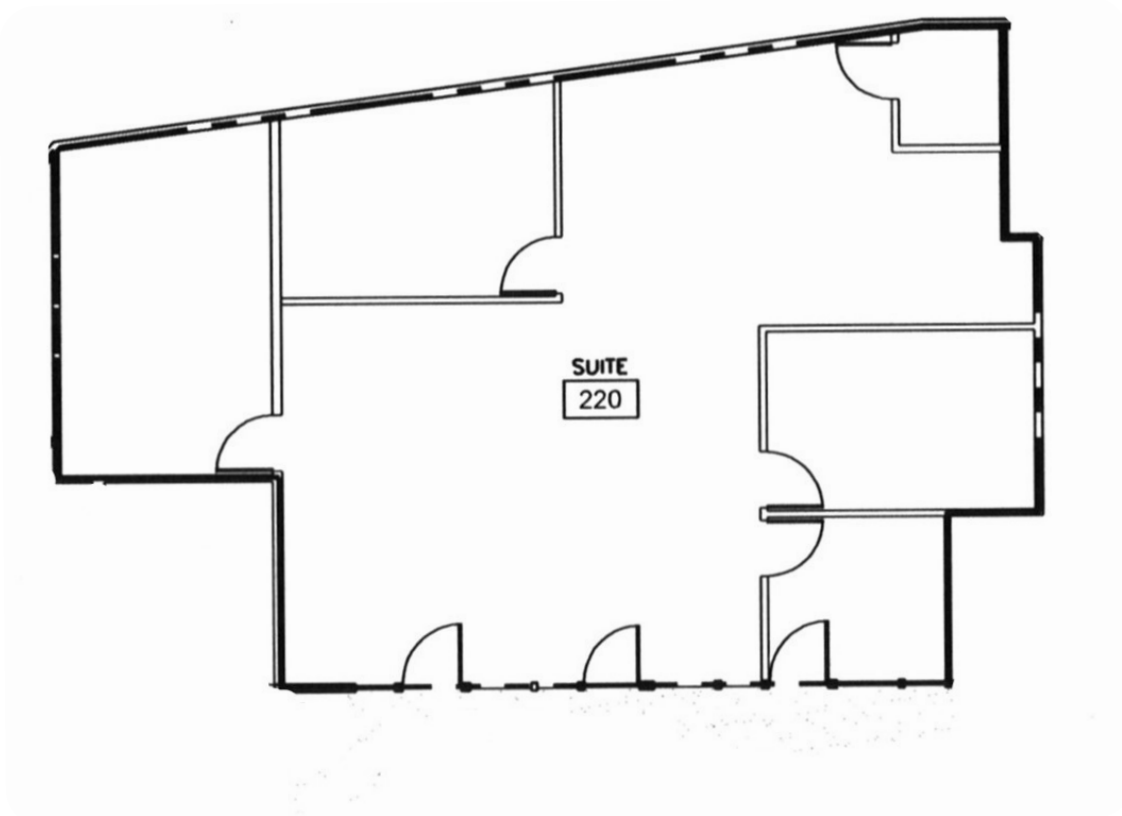


OFFICE FOR LEASE

50 VASHELL WAY | ORINDA, CA

CURRENT AVAILABLE SUITES:

SUITE:	SF ±	FEATURES:
220	1,836	Two private offices, conference room, kitchenette
340	689	Two private offices, reception area
350	849	Two private offices
360	947	Private office, conference room



EXCLUSIVE AGENTS

JOE MCGLYNN

jmcglynn@lee-associates.com

510.903.7612 | LIC# 01911689

DAVE MCCARTY

dmccarty@lee-associates.com

510.903.7602 | LIC# 01748283

LOCAL EXPERTISE. INTERNATIONAL REACH. WORLD CLASS.