



Only **1** retail  
unit left

**Retail** | For Lease

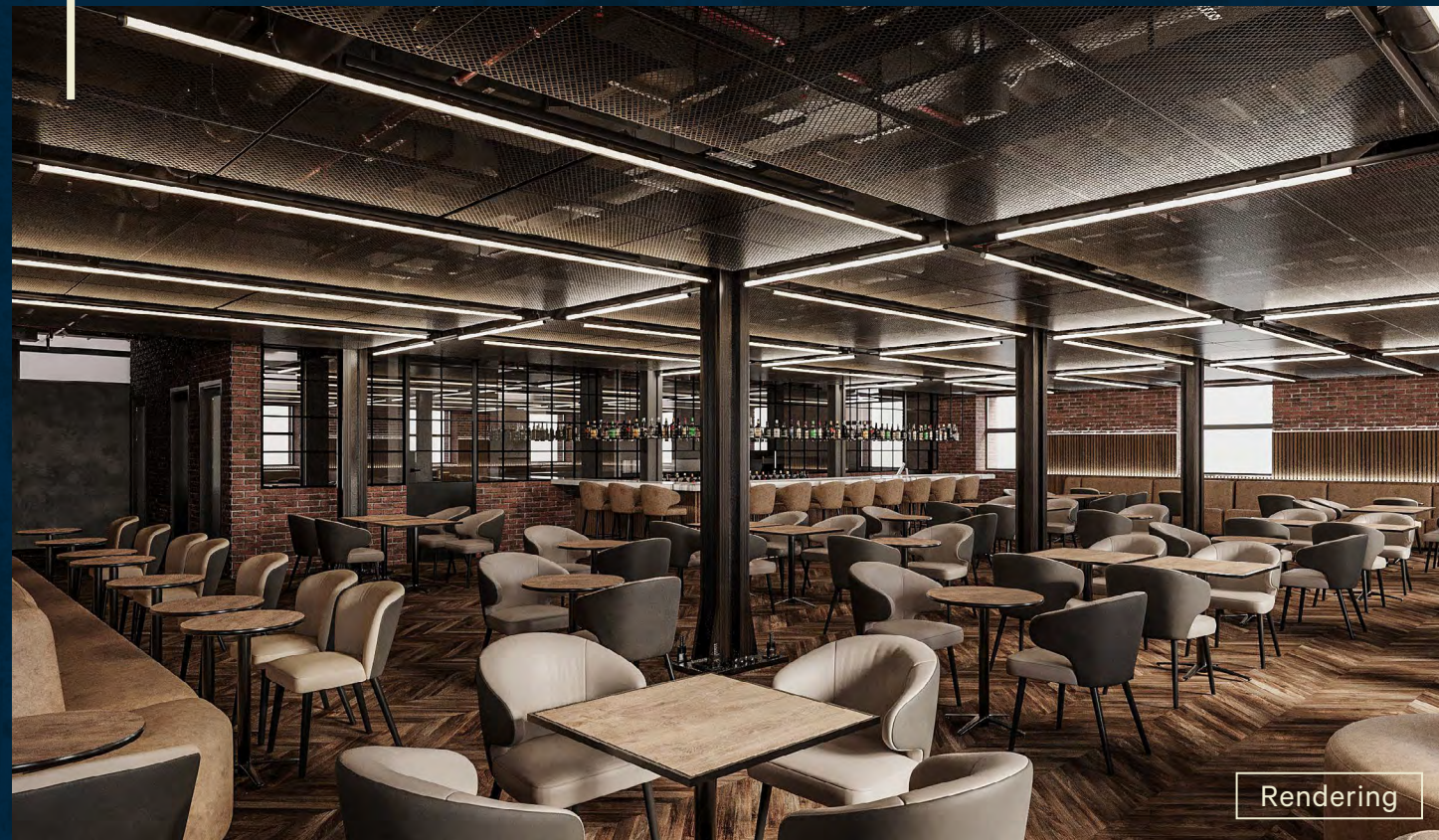
**CBRE**

300 Du Saint-Sacrement Street  
Old Montreal (Québec)

# In the heart of Old Montreal

The building at 300 du Saint-Sacrement Street in the traditional sector of the stock exchange and commercial enterprises is known as the Montreal-Board-of-Trade building. After the great fire in 1901, the building was rebuilt and Le Moyne Street was continued until Saint-Nicolas Street, isolating the site of the Board of Trade on an island bordered by 4 streets; du Saint-Sacrement Street, Le Moyne Street, Saint-Pierre Street and Saint-Nicolas Street. This redevelopment holds a great piece of Montreal's history and is to become a perfect home for commercial tenants to thrive in.

Ideal space for restaurant, cafe & retail use.

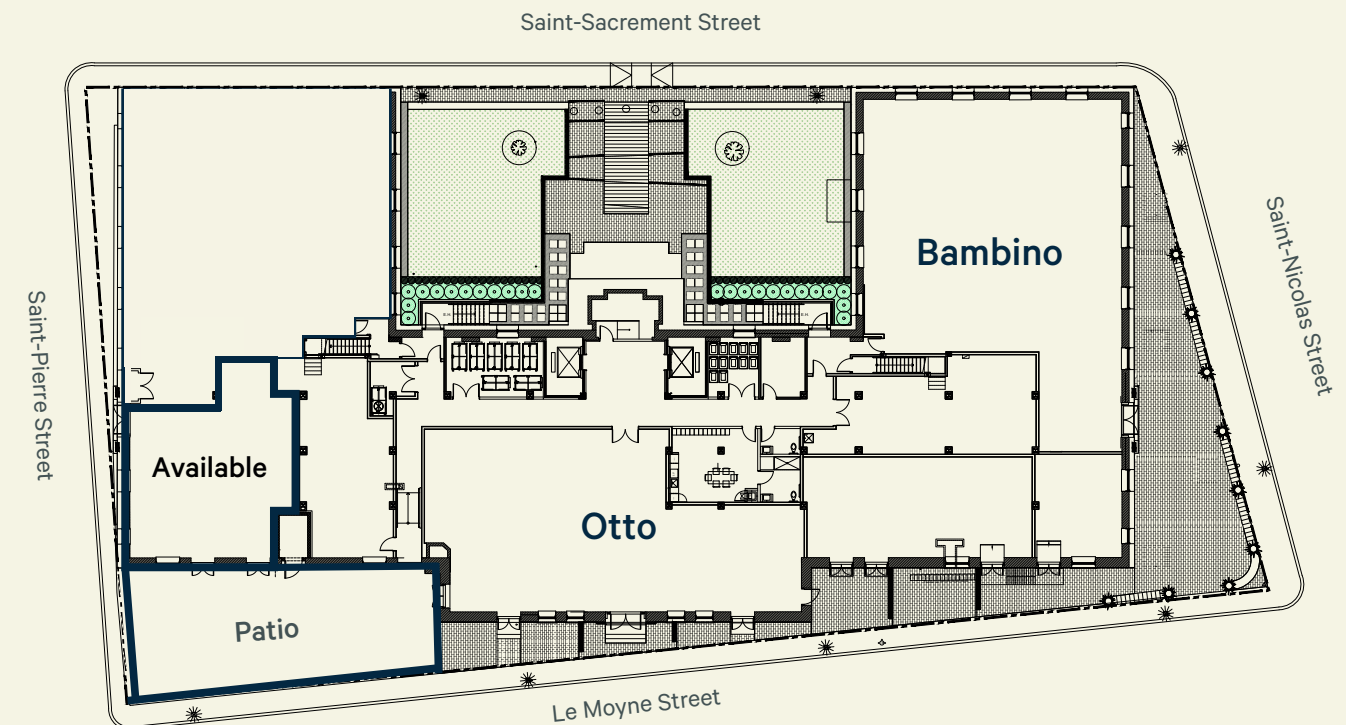


Lease Terms	
Term	5 years
Availability	Immediate
Area	1,492 sq. ft.
Net rent	\$55.00
Additional rent	\$15.00
Gross rent	\$70.00 per sq. ft.
Hydro	Metered separately



## Property Details

- Located on Saint-Pierre and Le Moyne Streets
- In proximity of the Square-Victoria-OACI and Place-d'Armes metro stations
- Space delivered in base building condition
- 168 room boutique hotel
- Private terrace available for unit 2





Rendering



Rendering

300 Du Saint-Sacrement Street  
Old Montreal (Québec)

# Location



## Contact Us

**Christopher Rundle**  
Vice President  
Real Estate Broker  
+1 514 375 0818  
christopher.rundle@cbre.com

**Bryan Greenberg**  
Associate Vice President  
Commercial Real Estate Broker  
+1 514 375 2507  
bryan.greenberg@cbre.com

**Amanda Angela Herbu**  
Associate  
Commercial Real Estate Broker  
+1 514 375 0456  
amanda.herbu@cbre.com

CBRE Limited, Real Estate Agency  
1250 René-Lévesque Boulevard West, Suite 2800, Montréal, Québec H3B 4W8 T +1 514 849 6000 | [www.cbre.ca](http://www.cbre.ca)

This disclaimer shall apply to CBRE Limited, Real Estate Agency, and to all other divisions of the Corporation; to include all employees and independent contractors ("CBRE"). The information set out herein, including, without limitation, any projections, images, opinions, assumptions and estimates obtained from third parties (the "Information") has not been verified by CBRE, and CBRE does not represent, warrant or guarantee the accuracy, correctness and completeness of the Information. CBRE does not accept or assume any responsibility or liability, direct or consequential, for the Information or the recipient's reliance upon the Information. The recipient of the Information should take such steps as the recipient may deem necessary to verify the Information prior to placing any reliance upon the Information. The Information may change and any property described in the Information may be withdrawn from the market at any time without notice or obligation to the recipient from CBRE. CBRE and the CBRE logo are the service marks of CBRE Limited and/or its affiliated or related companies in other countries. All other marks displayed on this document are the property of their respective owners. All Rights Reserved. Mapping Sources: Canadian Mapping Services [canadamapping@cbre.com](mailto:canadamapping@cbre.com); DMTI Spatial, Environics Analytics, Microsoft Bing, Google Earth.