



# WESTLAKE CORPORATE CENTER I

9119 CORPORATE LAKE DR | TAMPA, FL

2,571-25,618 RSF SPACE AVAILABLE FOR SUBLEASE

**CBRE**

# HIGHLIGHTS

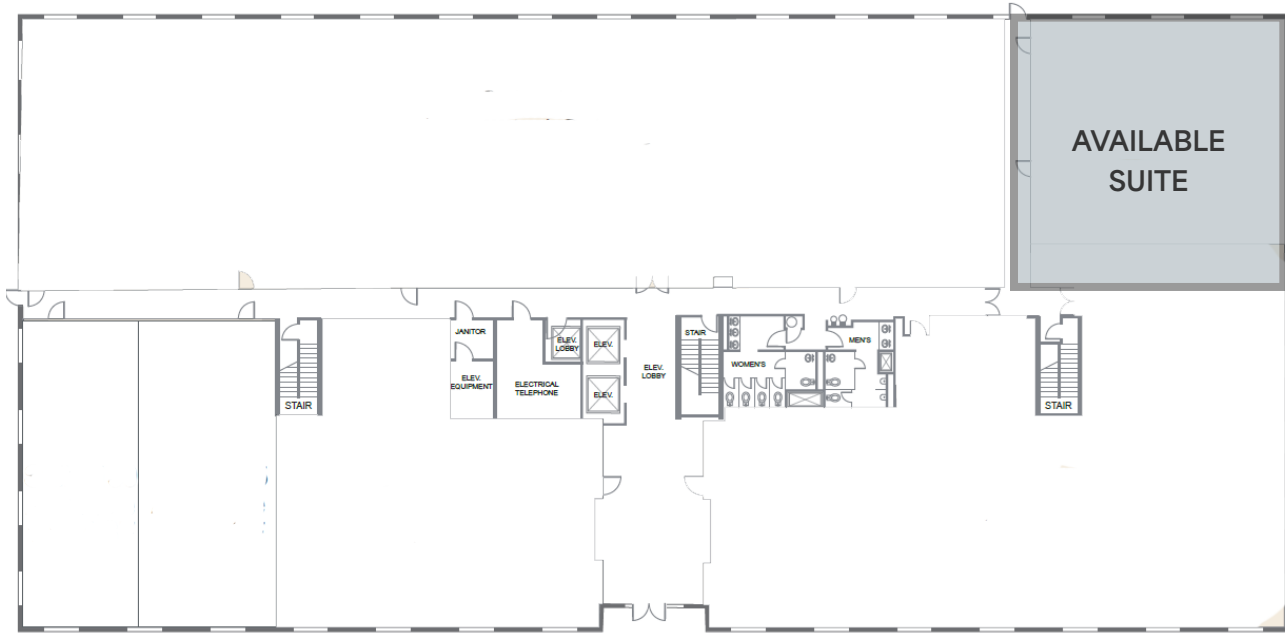
## PRIME SUBLEASE OPPORTUNITY IN TAMPA'S CORPORATE LAKE DISTRICT

- 25,618 RSF
  - Suite 160 - 2,571 RSF
  - Suite 200 - 23,047 RSF
- Lease Expiration: January 2029
- Furniture Available
- Parking Ratio: 6.30/1,000 SF
- Prestigious office location at 9119 Corporate Lake Drive
- Positioned within a well-established professional business park
- Convenient access to major roadways and Tampa International Airport
- Surrounded by nearby dining, retail, and business services



# FLOORPLAN

2,571-25,618 RSF AVAILABLE FOR SUBLEASE



SUITE 160 - 2,571 RSF

SUITE 200 - 23,047 RSF



