

Available for lease!

1852 East Palmdale Boulevard
Palmdale, California 93550



DAVID MALING

Principal

213.453.1770 Call/Text

dmaling@naicapital.com

License No. 01139115

NAI Capital
Commercial Real Estate Services, Worldwide.



Available space
is designed to
accommodate a variety
of uses!

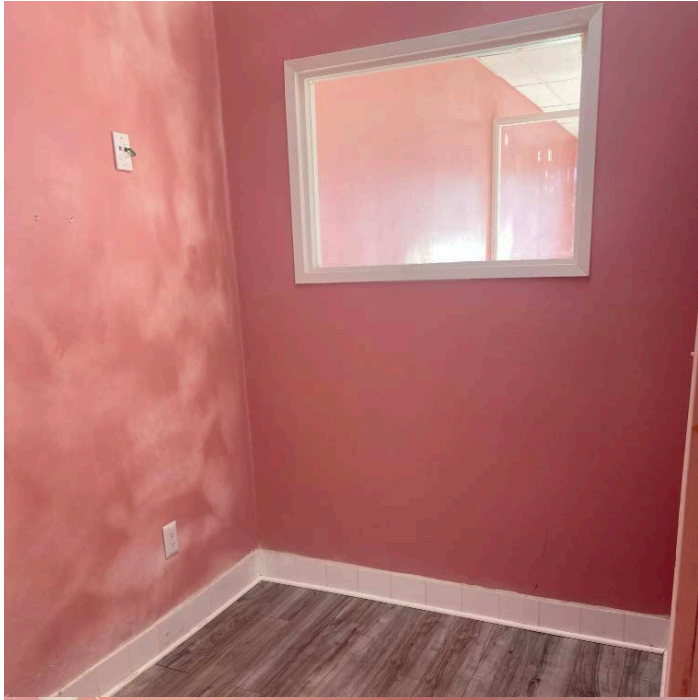
Leasing terms

SF AVAILABLE:	±680
ASKING RENT:	\$2.50 + NNN
TERM:	Negotiable
DATE AVAILABLE:	Available

*NNNs are estimated at \$0.50 / SF

HIGHLIGHTS

- ±680 SF retail space
- Great opportunity for various retail including pet services, beauty, health, and more!
- Ample parking - 48 Surface Spaces
- Situated at the busy intersection of Palmdale Blvd. and 20th St., less than 3 miles from CA Route 14







ABOUT PALMDALE

Palmdale, California, is a city in the Antelope Valley with a prime location that offers easy access to major highways and a growing economy. Known for its wide-open spaces and beautiful desert landscapes, Palmdale provides an attractive environment for businesses to flourish. With a strong mix of industrial, commercial, and residential development, the area is perfect for companies seeking both accessibility and expansion opportunities. The city is strategically positioned between Los Angeles and the high desert, making it an ideal hub for businesses looking to connect with regional and national markets.



DEMOGRAPHICS | 2024 | 3-MILE RADIUS

48K

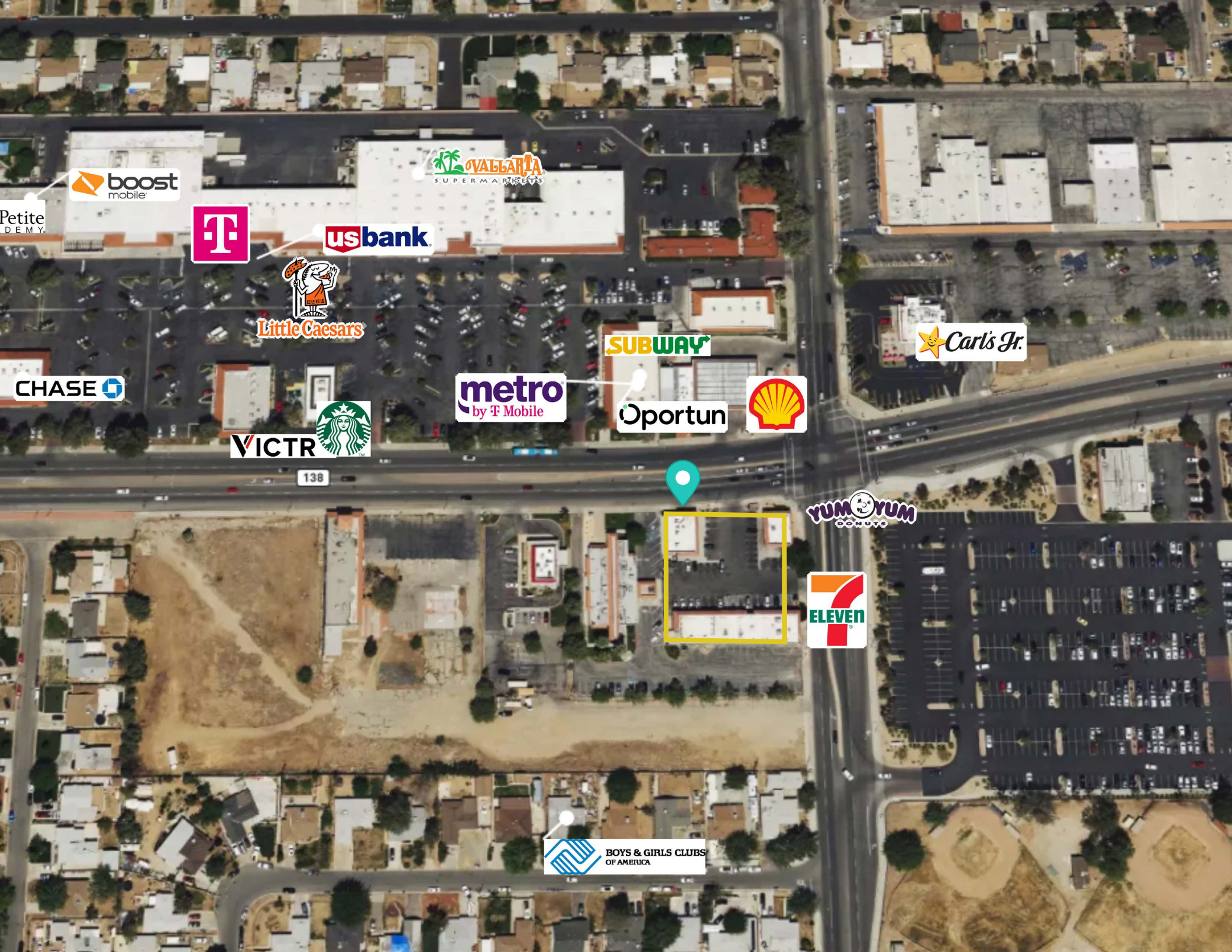
POPULATION

\$87K

AVG HOUSEHOLD
INCOME

17K

HOUSEHOLDS



boost
mobile

VALERIA
SUPERMARKETS

Petite
D.E.M.Y.



usbank



Little Caesars

SUBWAY

Carl's Jr.

CHASE

metro
by T Mobile

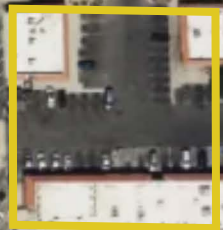
Oportun



VICTR



138



YUM YUM
DONUTS

7
ELEVEN

BOYS & GIRLS CLUBS
OF AMERICA



We look forward to
speaking with you!

David Maling
Principal
213.453.1770 Call/Text
dmaling@naicapital.com
License No. 01139115

Information contained herein was obtained from sources deemed reliable and, while thought to be correct, have not been verified. NAI Capital Commercial, Inc. does not guarantee the accuracy or completeness of the information presented, nor assumes any responsibility or liability for any errors or omissions therein.

