



Lease Rate
\$7.50 psf nnn

6 Thompson Road East Windsor, CT 06088

±21,780 industrial building for lease

This industrial building is fully air-conditioned, making it ideal for various industrial and commercial uses. The M-1 zoning provides flexibility for a range of business operations. The property is strategically located in East Windsor, CT, offering easy access to major transportation routes.

Features

- ±21,780 sf fully air-conditioned industrial building
- ±2.5 acre site
- ±7,000 sf office space
- 1 loading dock & 1 drive-in door
- Built in 1980
- M-1 Zoning
- Ample parking
- Fully sprinklered

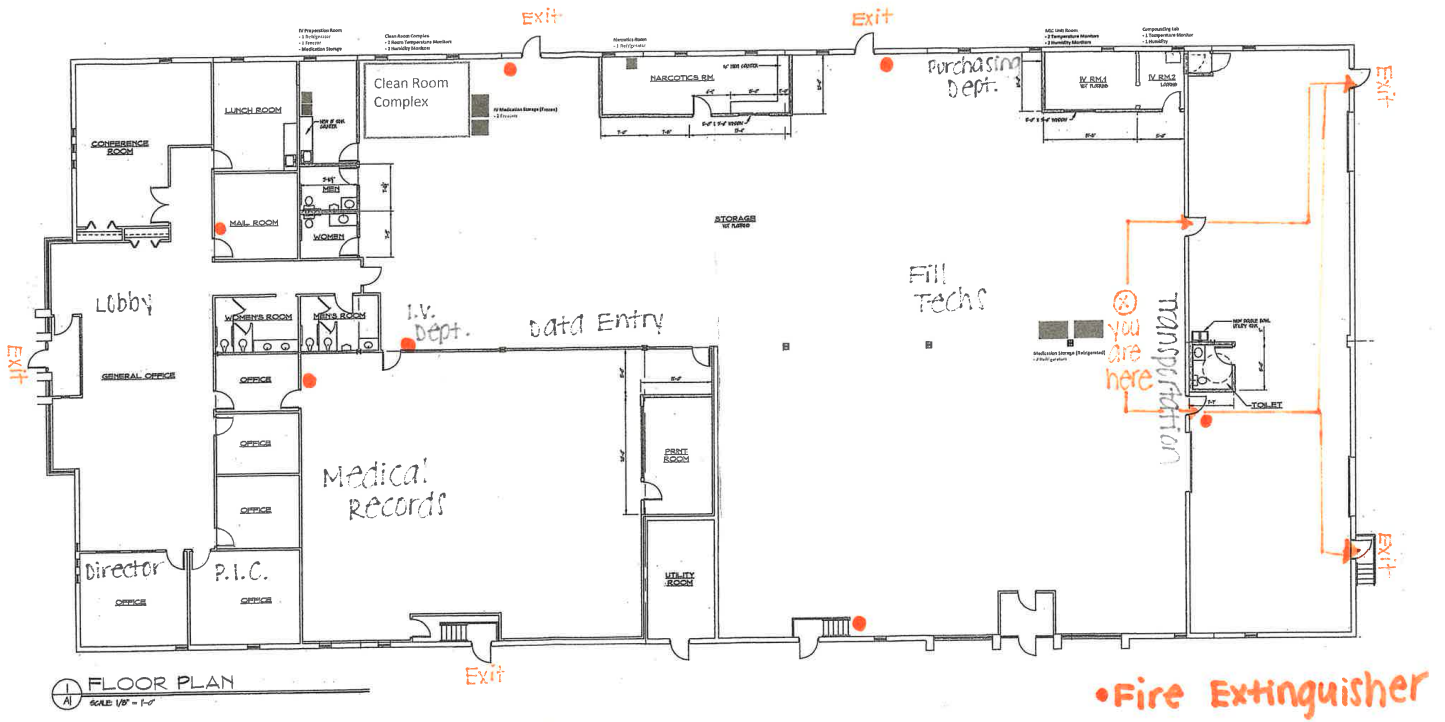
Nicholas Morizio, CRE, SIOR
860 616 4022
nicholas.morizio@ct.colliers.com

864 Wethersfield Avenue
Hartford, CT 06114
860 249 6521 Main

colliers.com/hartford

Copyright © 2025 Colliers International. Information herein has been obtained from sources deemed reliable, however its accuracy cannot be guaranteed. The user is required to conduct their own due diligence and verification.

6 Thompson Road, East Windsor, CT



Contact:

Nicholas Morizio, CRE, SIOR
860 616 4022
nicholas.morizio@ct.colliers.com

864 Wethersfield Avenue
Hartford, CT 06114
860 249 6521 Main
colliers.com/hartford

6 Thompson Road, East Windsor, CT



Contact:

Nicholas Morizio, CRE, SIOR
860 616 4022
nicholas.morizio@ct.colliers.com

864 Wethersfield Avenue
Hartford, CT 06114
860 249 6521 Main
colliers.com/hartford