



## 7,937 SF Available

### Property Highlights

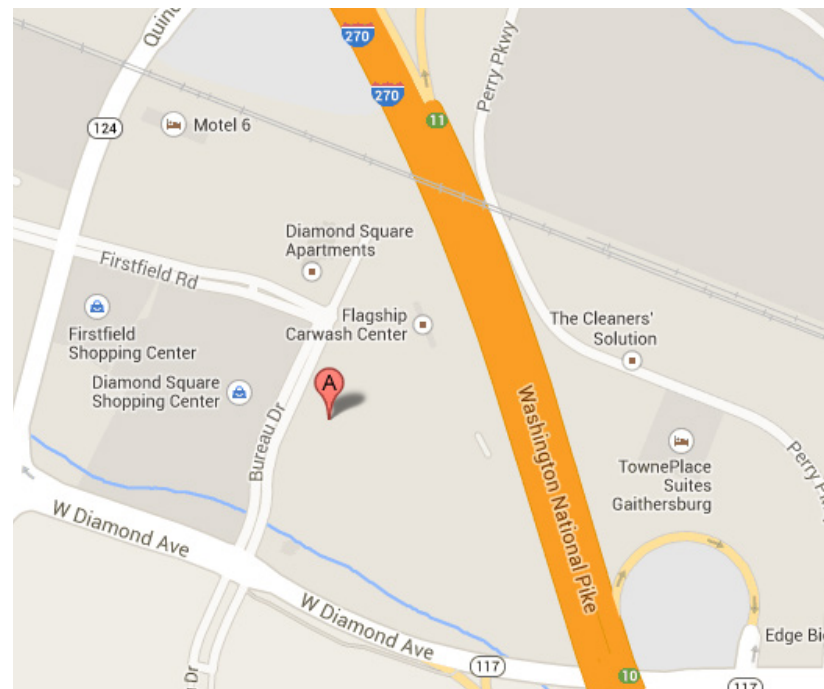
- On-site ownership and management
- Adjacent to National Institutes of Standards and Technology (NIST) and Department of Energy (DOE)
- Numerous walkable amenities including restaurants and shops
- 2 blocks from I-270/Clopper Road Interchange
- 120 free surface parking spaces available

### For more information, please contact:

**Peter Rosan**  
+1 301 634 8487  
peter.rosan@cushwake.com

**Megan Williams**  
+1 301 634 8489  
megan.williams@cushwake.com

2 Bethesda Metro Center, Suite 860  
Bethesda, MD 20814  
+1 301 654 9700  
[cushmanwakefield.com](http://cushmanwakefield.com)





**CUSHMAN &  
WAKEFIELD**

FOR LEASE

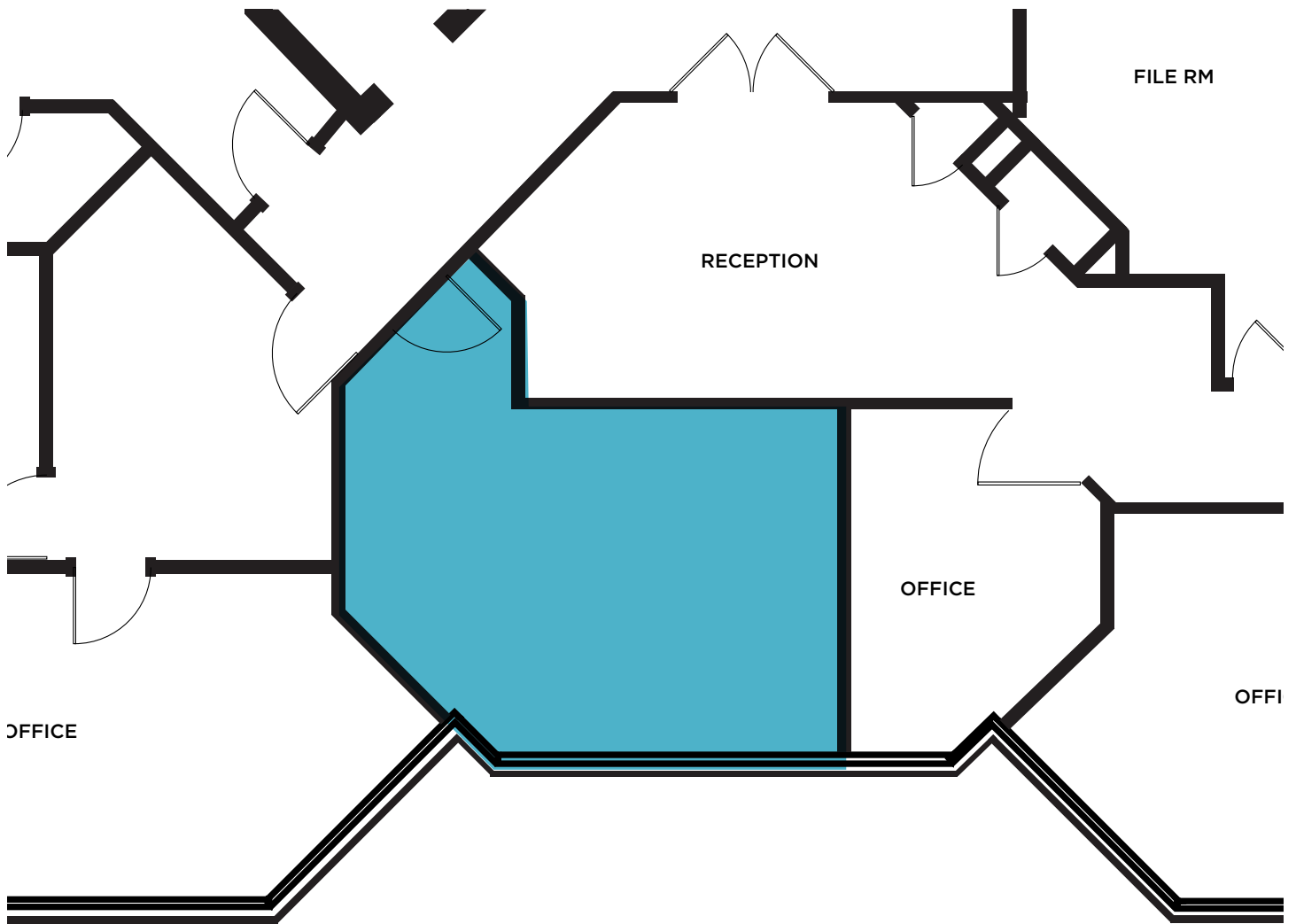
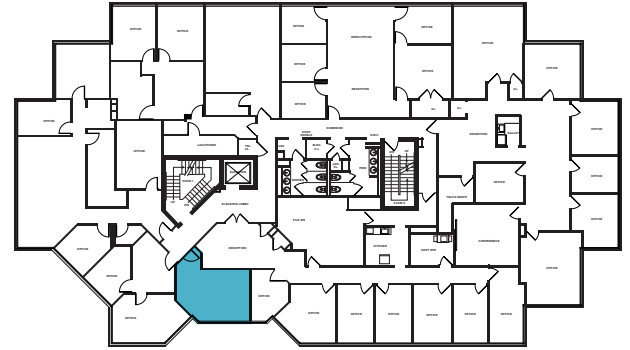
**814 W. Diamond Avenue**

Gaithersburg, MD 20878

## Floor Plans

SUITE 205

400 SF | \$900.00/Month



**For more information, please contact:**

**Peter Rosan**  
+1 301 634 8487  
peter.rosan@cushwake.com

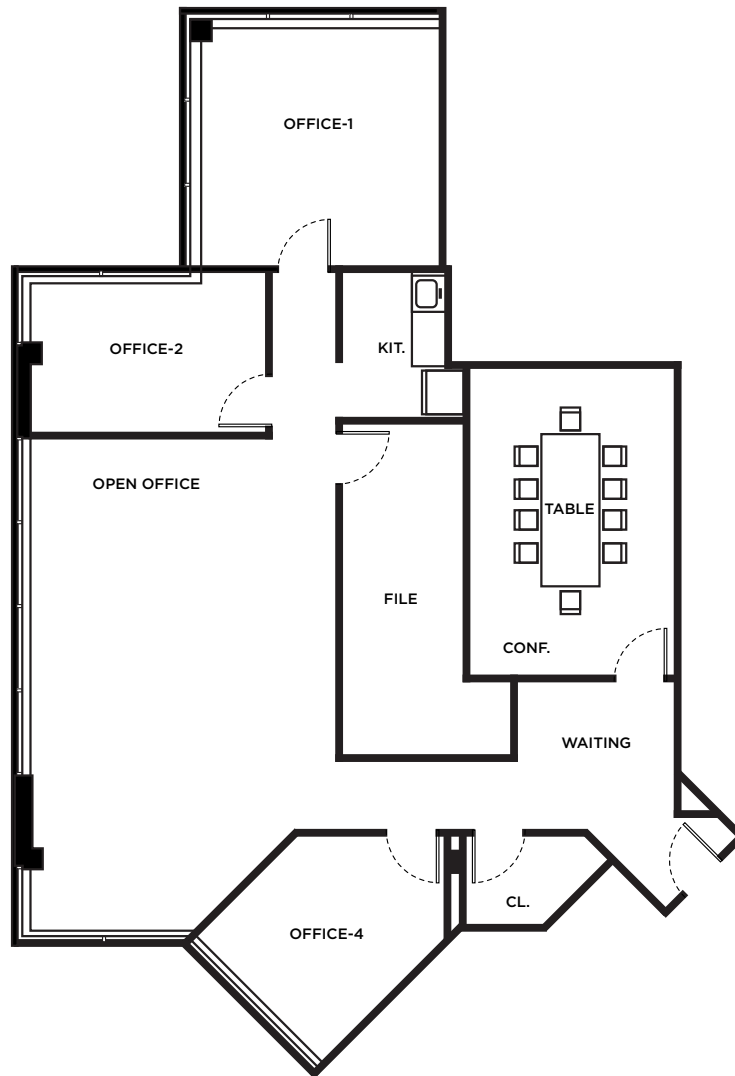
**Megan Williams**  
+1 301 634 8489  
megan.williams@cushwake.com

2 Bethesda Metro Center, Suite 860  
Bethesda, MD 20814  
+1 301 654 9700  
**cushmanwakefield.com**

## Floor Plans

SUITE 210

2,760 SF | \$22.00/SF



**For more information, please contact:**

**Peter Rosan**  
+1 301 634 8487  
peter.rosan@cushwake.com

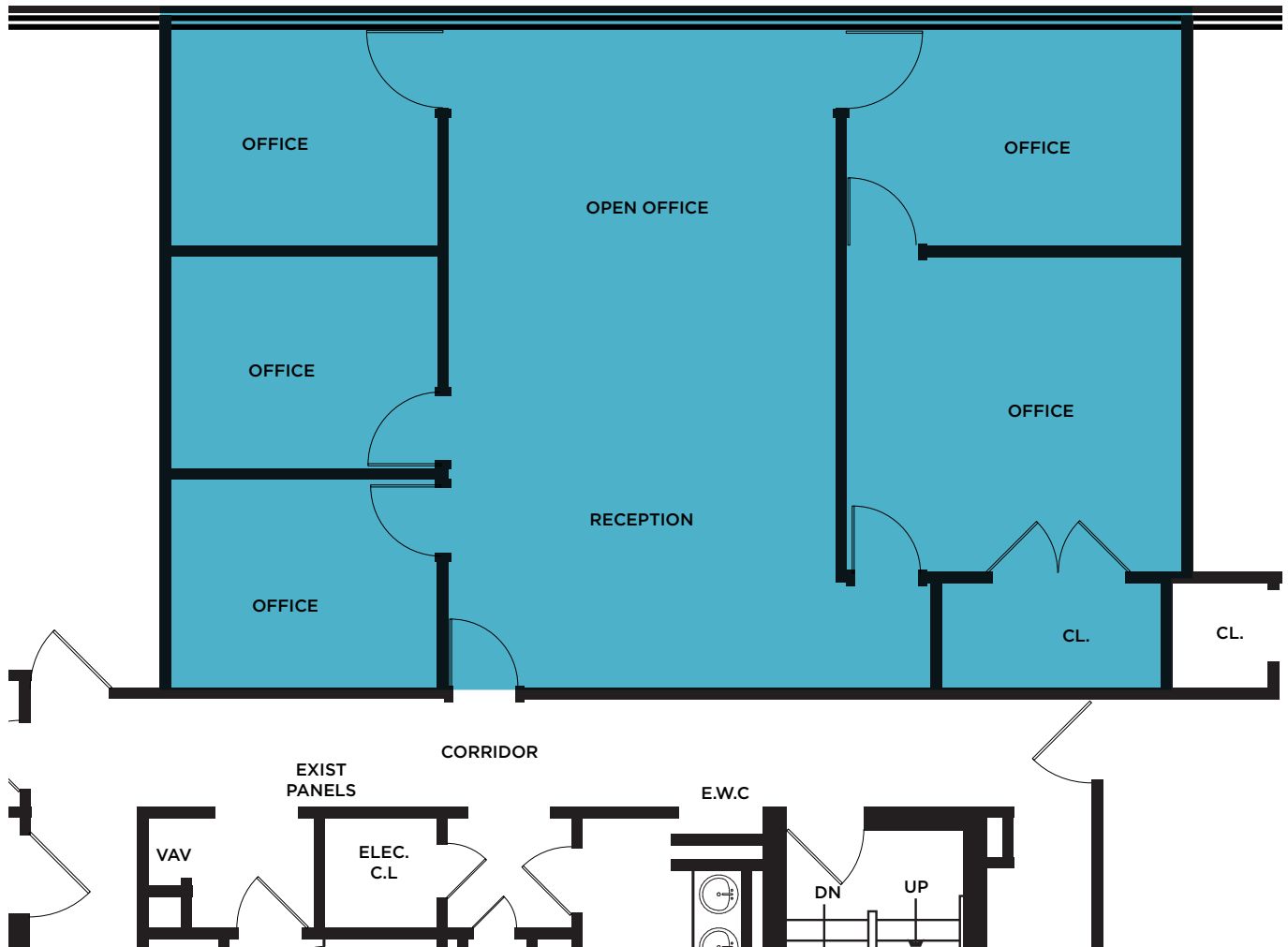
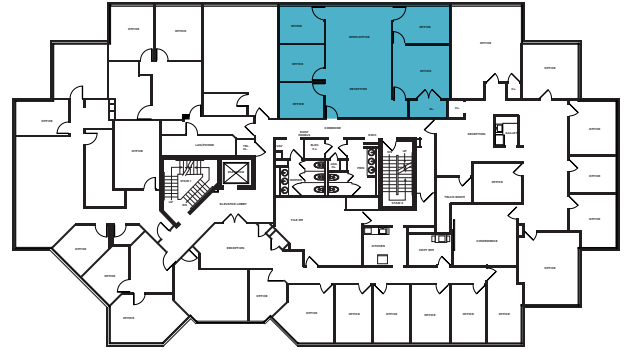
**Megan Williams**  
+1 301 634 8489  
megan.williams@cushwake.com

2 Bethesda Metro Center, Suite 860  
Bethesda, MD 20814  
+1 301 654 9700  
**cushmanwakefield.com**

**Floor Plans**

SUITE 245

1,622 SF | \$22.00/SF



**For more information, please contact:**

**Peter Rosan**  
+1 301 634 8487  
peter.rosan@cushwake.com

**Megan Williams**  
+1 301 634 8489  
megan.williams@cushwake.com

2 Bethesda Metro Center, Suite 860  
Bethesda, MD 20814  
+1 301 654 9700  
**cushmanwakefield.com**



**CUSHMAN &  
WAKEFIELD**

FOR LEASE

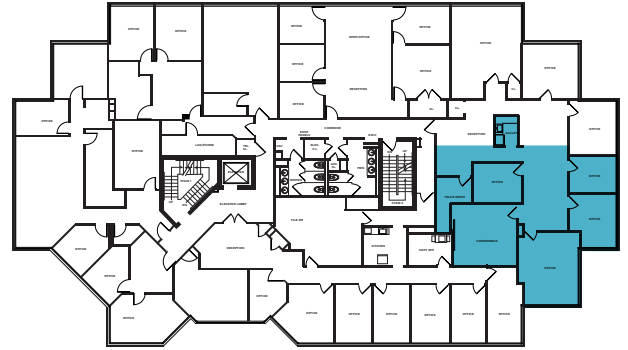
**814 W. Diamond Avenue**

Gaithersburg, MD 20878

## Floor Plans

SUITE 260

1,571 SF | \$22.00/SF



**For more information, please contact:**

**Peter Rosan**  
+1 301 634 8487  
peter.rosan@cushwake.com

**Megan Williams**  
+1 301 634 8489  
megan.williams@cushwake.com

2 Bethesda Metro Center, Suite 860  
Bethesda, MD 20814  
+1 301 654 9700  
**cushmanwakefield.com**



**CUSHMAN &  
WAKEFIELD**

FOR LEASE

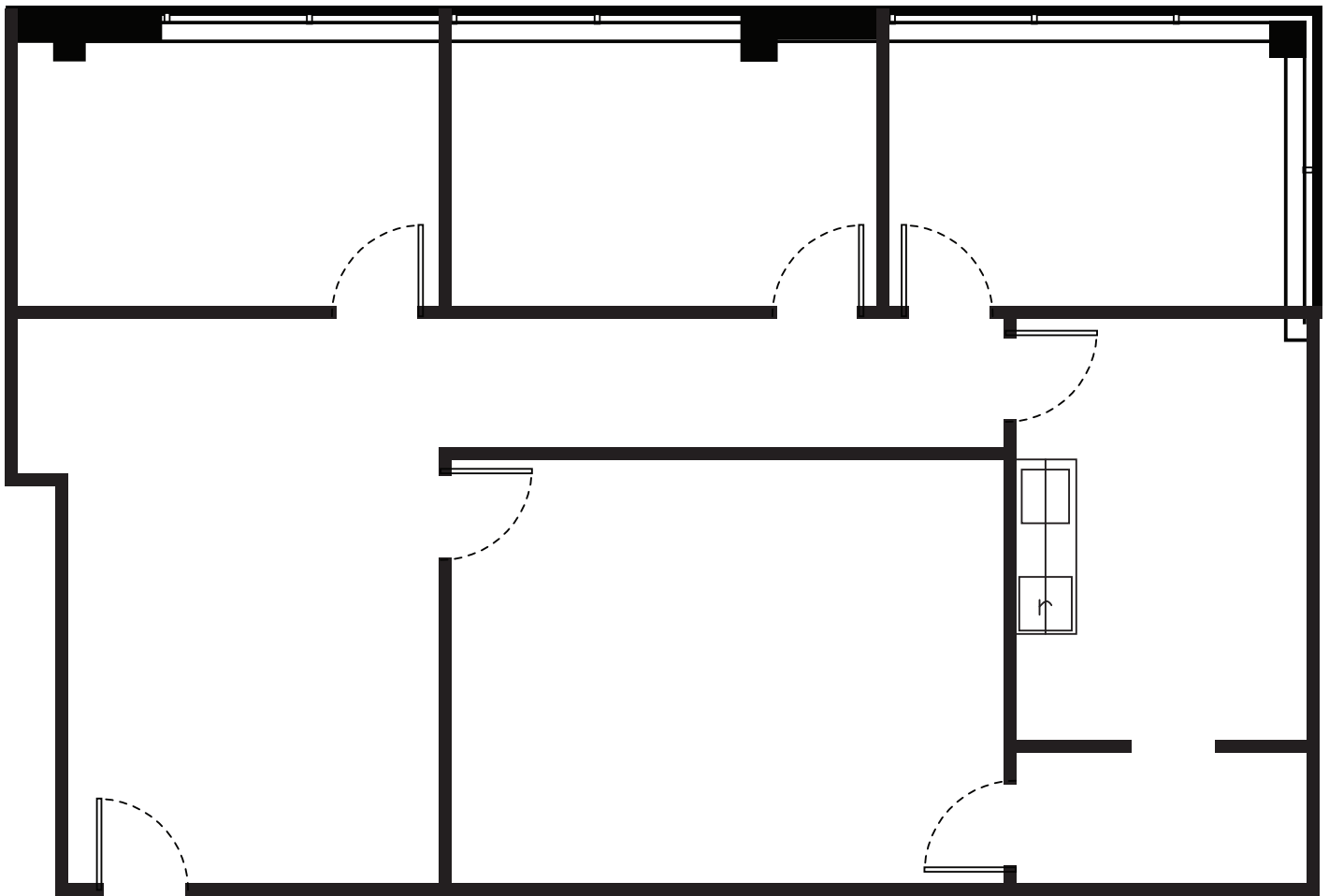
**814 W. Diamond Avenue**

Gaithersburg, MD 20878

## Floor Plans

SUITE 350

1,584 SF | \$22.00/SF



**For more information, please contact:**

**Peter Rosan**

+1 301 634 8487

[peter.rosan@cushwake.com](mailto:peter.rosan@cushwake.com)

**Megan Williams**

+1 301 634 8489

[megan.williams@cushwake.com](mailto:megan.williams@cushwake.com)

2 Bethesda Metro Center, Suite 860

Bethesda, MD 20814

+1 301 654 9700

[cushmanwakefield.com](http://cushmanwakefield.com)