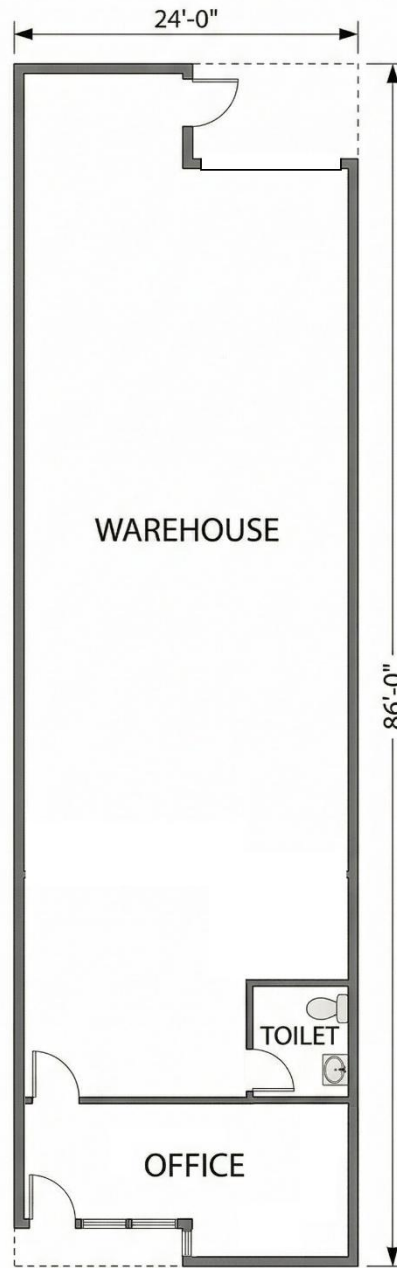


FLOORPLAN



FOR ILLUSTRATIVE PURPOSES ONLY. NOT TO SCALE. ALL MEASUREMENTS PROVIDED OR IMPLIED ARE APPROXIMATE.

4061 CALLE TESORO
CAMARILLO, CALIFORNIA

FOR MORE INFORMATION CONTACT:
KENT PIERCE
1203 FLYNN ROAD, SUITE 240, CAMARILLO, CALIFORNIA 93012
TELEPHONE: 805/384-9500 x101
WWW.EQUITYCOMMERCIAL.COM

EQUITY
COMMERCIAL