

INDU
STRY

FOR LEASE
CREATIVE OFFICE / RETAIL
±3,000 to ±18,261 RSF

5015
N FIGUEROA ST
HIGHLAND PARK

INDUSTRYPARTNERS.COM
310 395 5151
CA BRE No. 01900833

CARLE PIEROSE
cp@industrypartners.com
CA BRE No. 01464318

AVAILABLE RSF

Suite A ± 3,000 RSF
 Suite B ± 6,000 RSF
 Suite C ± 9,261 RSF
Total Combinable ± 18,261 RSF

RATE

\$3.95/SF per Mo. MG

TERM

Flexible

PARKING

1:1000 in gated lot
 @ \$100/space/mo

OCCUPANCY

Immediate

Best-in-class creative office & retail conversion building

FEATURES

Brick industrial building completed in 1930, extensively renovated in 2021

Best in class move-in ready featuring polished concrete floors, exposed wood trusses approx. 16' ceilings, marble and walnut kitchens, and high end lighting

Outdoor decks with workspace

Entry with landscaped garden

On-site parking

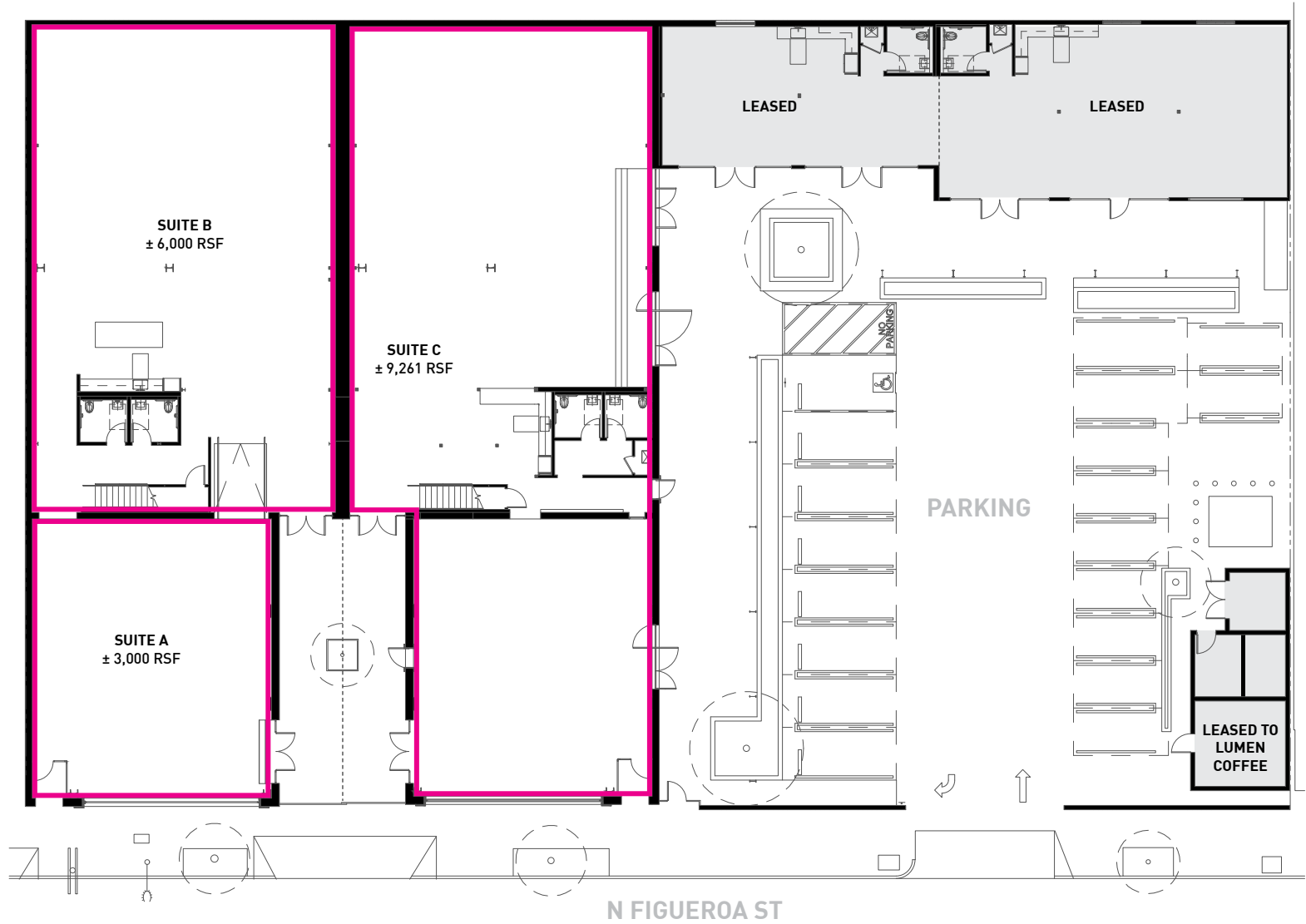
Less than 5-min bike ride to Metro Gold Line and a wide variety of retail amenities

Quick access to the 110 freeway



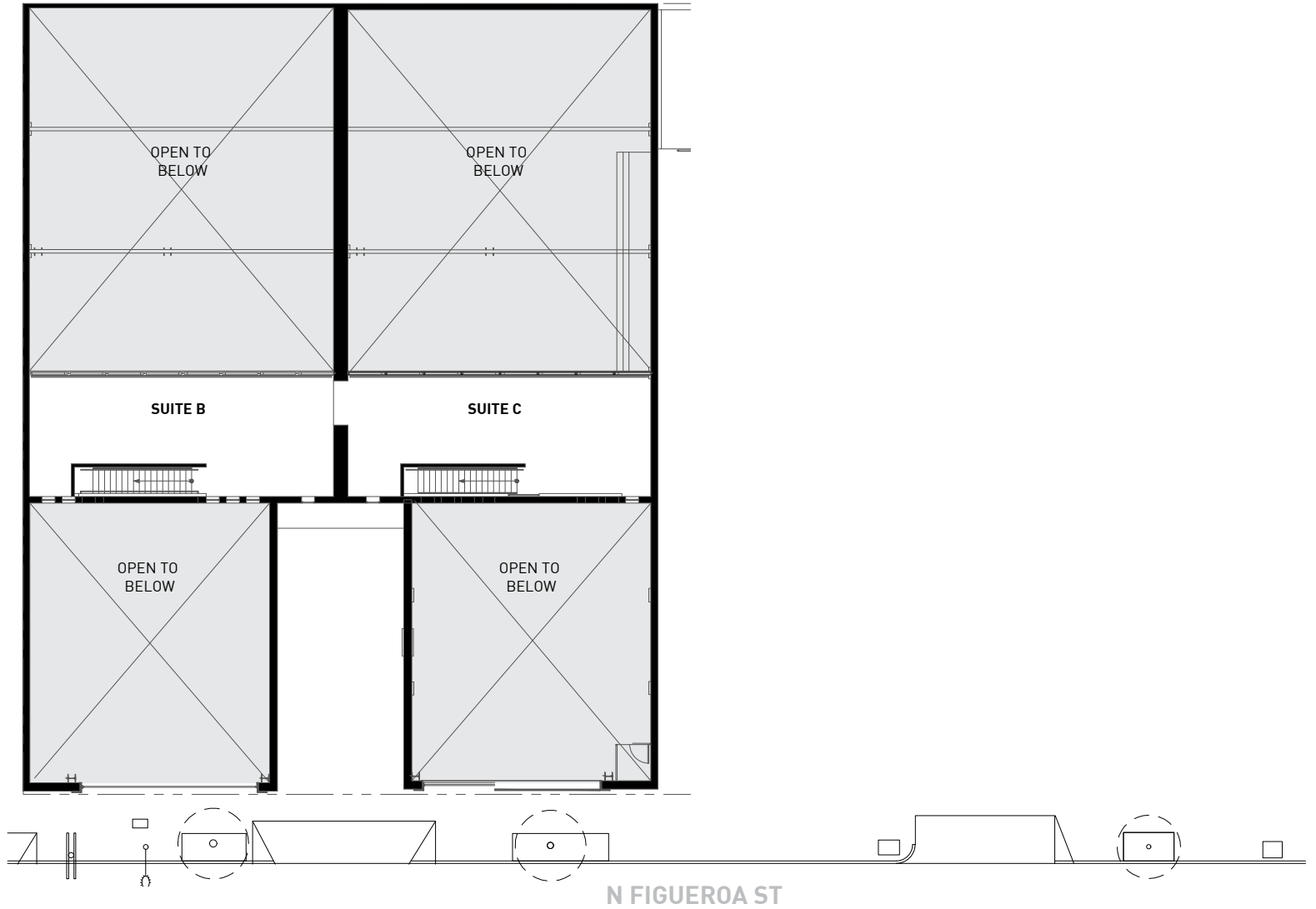
No warranty or representation is made to the accuracy of the foregoing information. Terms of sale or lease are subject to change or withdrawal without notice.
 ©2024 INDUSTRY PARTNERS, INC.

1ST FLOOR
Suite A ± 3,000 RSF
Suite B ± 6,000 RSF
Suite C ± 9,261 RSF



NOT TO SCALE.
Floor plan for information purposes only.
Layout and furnishings may vary

MEZZANINE



NOT TO SCALE.
Floor plan for information purposes only.
Layout and furnishings may vary

FOR LEASE

CREATIVE OFFICE | RETAIL

5015 N FIGUEROA ST HIGHLAND PARK CA 90042

INTERIOR PHOTOS
SUITE A

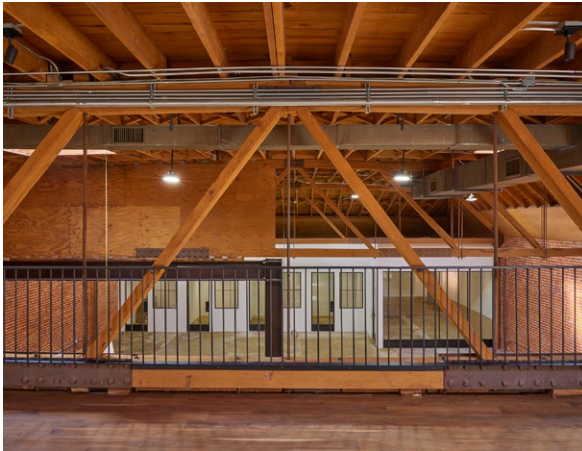
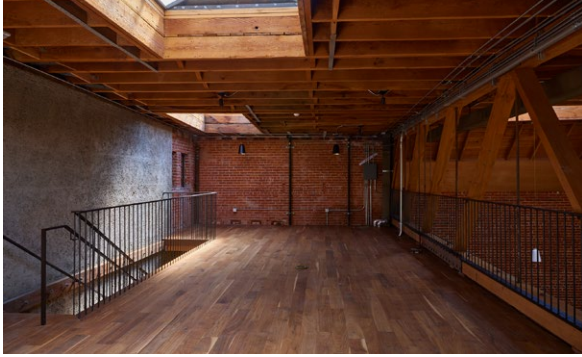


FOR LEASE

CREATIVE OFFICE | RETAIL

5015 N FIGUEROA ST HIGHLAND PARK CA 90042

INTERIOR PHOTOS
SUITE B



FOR LEASE

CREATIVE OFFICE | RETAIL

5015 N FIGUEROA ST HIGHLAND PARK CA 90042

INTERIOR PHOTOS
SUITE C



FOR LEASE

CREATIVE OFFICE | RETAIL

5015 N FIGUEROA ST HIGHLAND PARK CA 90042

PROPERTY PHOTOS
EXTERIOR



FOR LEASE

CREATIVE OFFICE | RETAIL

5015 N FIGUEROA ST HIGHLAND PARK CA 90042

LUMEN COFFEE
COMING SOON





**LUMEN
COFFEE**
NOW OPEN

Lumen Coffee will offer a unique blend of Armenian tradition and modern coffee culture at 5015 N Figueroa St. With a golden tile mural by the Haas Brothers, their espresso bar and roastery promise a unique experience. Lumen Coffee is set to become Highland Park's go-to spot, offering expertly crafted coffee, cozy ambiance, and a cultural hub for the Eastside community. Soon, you'll be able to join us in celebrating the art of coffee and creativity at Lumen Coffee.



About the neighborhood

Highland Park has undergone a considerable transformation into a hot-spot in LA's 'hipster' enclaves that include Silver Lake and Echo Park. Highland Park features new coffee concepts like Civil Coffee and K&M Coffee; bars and lounges like ETA Bar and Good Housekeeping; restaurants like Café Birdie and Good Girl Dinette; and destinations like Highland Park Bowl and Highland Park Brewery.

In addition to the various places to eat and drink, 5015 N Figueroa is a 8 to 10 minute walk from the Gold Line Station, allowing easy access to DTLA and the rest of northeast LA

14-MIN WALK TO GOLD LINE STATION
84/100 WALKSCORE

No warranty or representation is made to the accuracy of the foregoing information. Terms of sale or lease are subject to change or withdrawal without notice.
©2024 INDUSTRY PARTNERS, INC.

