

**±39,325 SF
FOR LEASE**

INDUSTRIAL BUILDING ON ±2.77 ACRES
1493 E. SAN BERNARDINO AVENUE | SAN BERNARDINO, CA 92408



DON KAZANJIAN
President & Principal
dkazanjian@lee-assoc.com
D 909.373.2929
DRE #00860886

JAKE ARELLANO, GLS
Senior Vice President
jarellano@lee-associates.com
D 562.568.2088
DRE #02113094

TIM CRONIN, SIOR
Senior Vice President
tcronin@lee-associates.com
D 323.767.2088
DRE #00916418

LEE & ASSOCIATES - ONTARIO
3535 Inland Empire Boulevard | Ontario, CA 91764
(909) 989-7771 | lee-associates.com
Corporate ID: 00976995

LEE & ASSOCIATES
COMMERCIAL REAL ESTATE SERVICES

PROPERTY PROFILE

INDUSTRIAL BUILDING ON ±2.77 ACRES
1493 E. SAN BERNARDINO AVE | SAN BERNARDINO, CA 92408



PROPERTY FEATURES

- | | |
|----------------------------------|------------------------------------|
| » ±39,325 SF Industrial Building | » 18' Clear Height |
| » ±2,250 SF Office Space | » 800 Amps, 277/480 Volts (Verify) |
| » One (1) Ground Level Door | » Fire Sprinklers |
| » Six (6) Dock High Doors | » Large Fenced Yard |

DON KAZANJIAN
President & Principal
dkazanjian@lee-assoc.com
D 909.373.2929
DRE #00860886

JAKE ARELLANO, GLS
Senior Vice President
jarellano@lee-associates.com
D 562.568.2088
DRE #02113094

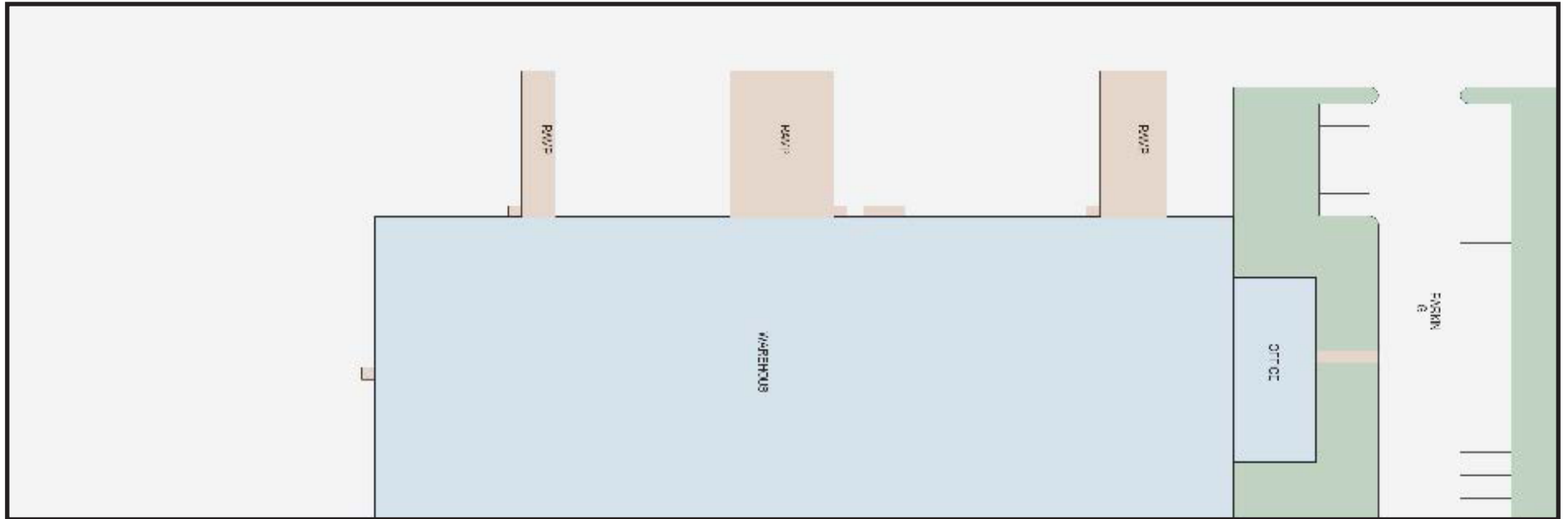
TIM CRONIN, SIOR
Senior Vice President
tcronin@lee-associates.com
D 323.767.2088
DRE #00916418

LEE & ASSOCIATES - ONTARIO
3535 Inland Empire Boulevard | Ontario, CA 91764
(909) 989-7771 | lee-associates.com
Corporate ID: 00976995

LEE & ASSOCIATES
COMMERCIAL REAL ESTATE SERVICES

SITE PLAN

INDUSTRIAL BUILDING ON ±2.77 ACRES
1493 E. SAN BERNARDINO AVE | SAN BERNARDINO, CA 92408



DON KAZANJIAN
President & Principal
dkazanjan@lee-assoc.com
D 909.373.2929
DRE #00860886

JAKE ARELLANO, GLS
Senior Vice President
jarellano@lee-associates.com
D 562.568.2088
DRE #02113094

TIM CRONIN, SIOR
Senior Vice President
tcronin@lee-associates.com
D 323.767.2088
DRE #00916418

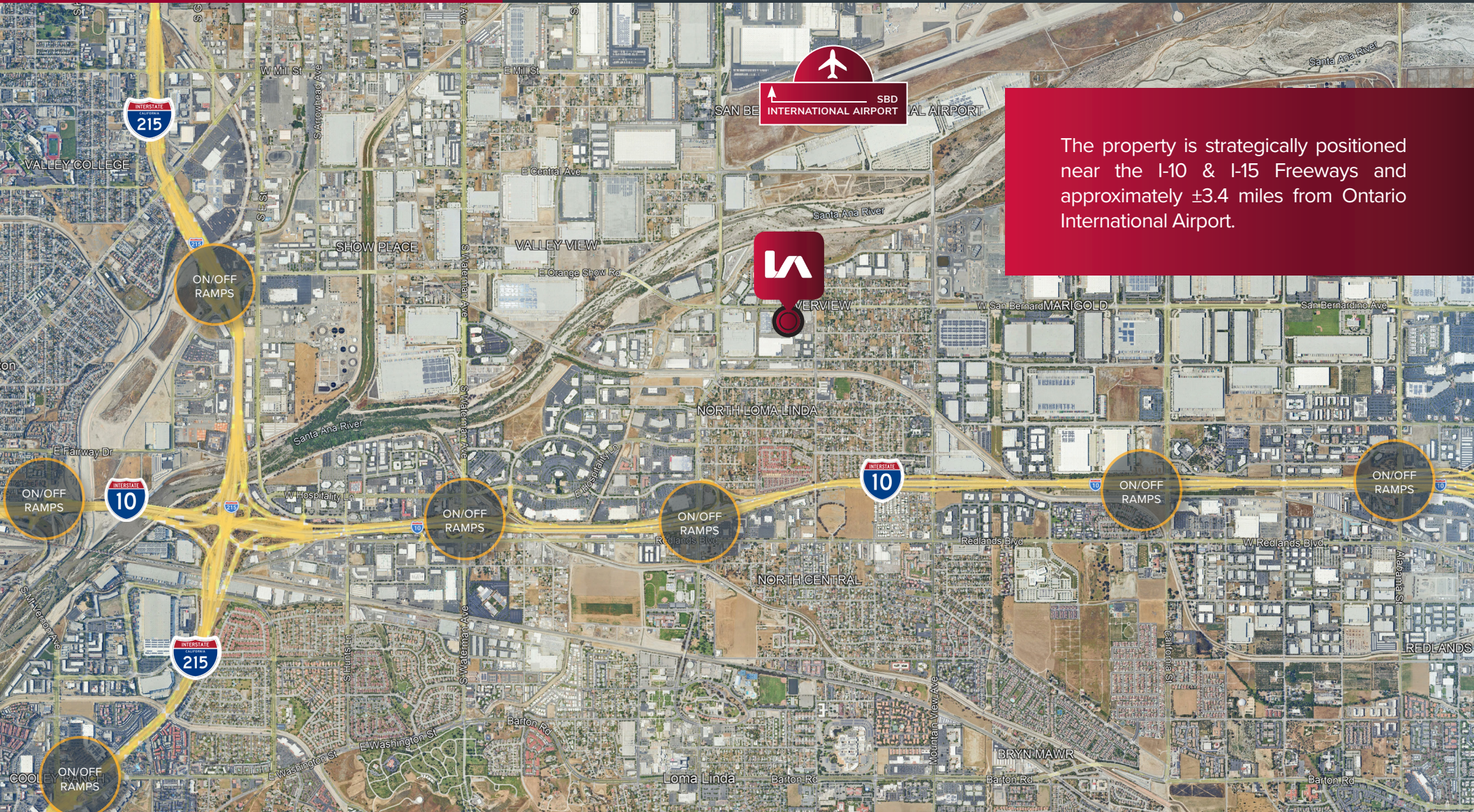
LEE & ASSOCIATES - ONTARIO
3535 Inland Empire Boulevard | Ontario, CA 91764
(909) 989-7771 | lee-associates.com
Corporate ID: 00976995

LEE & ASSOCIATES
COMMERCIAL REAL ESTATE SERVICES

LOCATION MAP

INDUSTRIAL BUILDING ON ±2.77 ACRES

1493 E. SAN BERNARDINO AVE | SAN BERNARDINO, CA 92408



The property is strategically positioned near the I-10 & I-15 Freeways and approximately ±3.4 miles from Ontario International Airport.

DON KAZANJIAN
President & Principal
dkazanjan@lee-assoc.com
D 909.373.2929
DRE #00860886

JAKE ARELLANO, GLS
Senior Vice President
jarellano@lee-associates.com
D 562.568.2088
DRE #02113094

TIM CRONIN, SIOR
Senior Vice President
tcronin@lee-associates.com
D 323.767.2088
DRE #00916418

LEE & ASSOCIATES - ONTARIO
3535 Inland Empire Boulevard | Ontario, CA 91764
(909) 989-7771 | lee-associates.com
Corporate ID: 00976995

LEE & ASSOCIATES
COMMERCIAL REAL ESTATE SERVICES

±39,325 SF INDUSTRIAL BUILDING ON ±2.77 ACRES

1493 E. SAN BERNARDINO AVENUE | SAN BERNARDINO, CA 92408

FOR MORE INFORMATION

DON KAZANJIAN

President & Principal
dkazanjian@lee-assoc.com
D 909.373.2929
DRE #00860886

JAKE ARELLANO, GLS

Senior Vice President
jarellano@lee-associates.com
D 562.568.2088
DRE #02113094

TIM CRONIN, SIOR

Senior Vice President
tcronin@lee-associates.com
D 323.767.2088
DRE #00916418

LEE & ASSOCIATES - ONTARIO

3535 Inland Empire Boulevard
Ontario, CA 91764
(909) 989-7771
Corporate ID #00976995

lee-associates.com



COMMERCIAL REAL ESTATE SERVICES
ONTARIO

All information furnished regarding property for sale, rental or financing is from sources deemed reliable, but no warranty or representation is made to the accuracy thereof and same is submitted to errors, omissions, change of price, rental or other conditions prior to sale, lease or financing or withdrawal without notice. No liability of any kind is to be imposed on the broker herein.