



**ZACUTO GROUP**  
COMMERCIAL REAL ESTATE



**FOR LEASE**

**364 S. MAPLE DRIVE**

**9225 W. OLYMPIC BOULEVARD**

**BEVERLY HILLS**

# LEASE DETAILS

364 S. MAPLE DRIVE

9225 W. OLYMPIC BOULEVARD

BEVERLY HILLS, CA 90212

*High visibility boutique retail opportunity  
on desirable corner of Beverly Hills.  
Flexible use with high ceilings and  
dedicated entry. On-building signage.*

**364 S. MAPLE DRIVE** (Available May 2026)

**Size:** ± 2,084 SF

**Rate:** \$4.00/SF NNN

*Nets approx. \$1.50/SF*

**9225 OLYMPIC BOULEVARD**

**Size:** ± 1,559 SF

**Rate:** \$4.50/SF NNN

*Nets approx. \$1.50/SF*

**TERM:** Negotiable



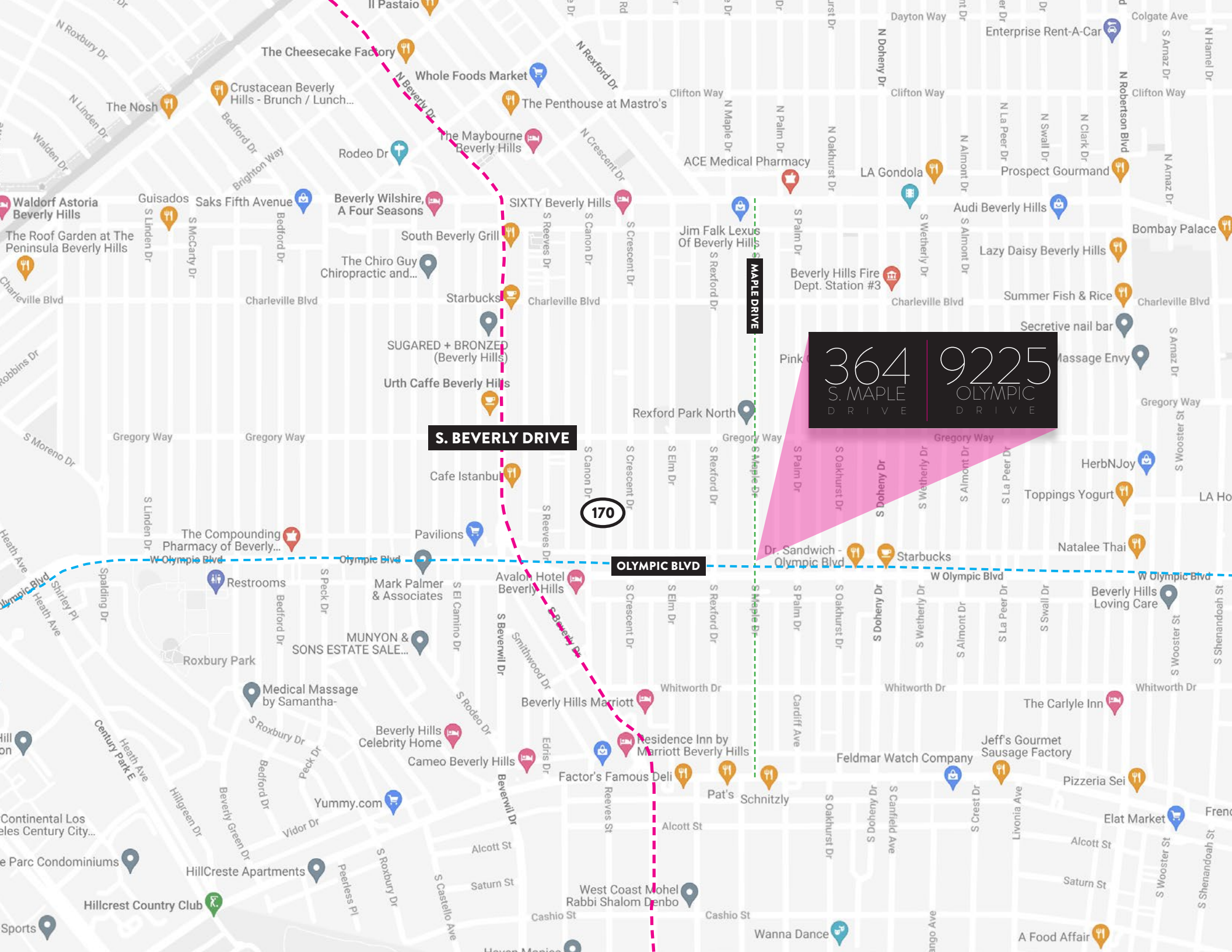
**364**  
S. MAPLE  
DRIVE  
BEVERLY HILLS

**9225**  
W. OLYMPIC  
BOULEVARD  
BEVERLY HILLS

## LISTING TEAM



**JOHN LOGAN**  
Associate Vice President  
931.561.9561  
john@zacutogroup.com  
BRE# 02161147



S. BEVERLY DRIVE

170

OLYMPIC BLVD

364 S. MAPLE DRIVE  
9225 OLYMPIC DRIVE

364

S. MAPLE DRIVE

BEVERLY HILLS

NOTOX NAILS

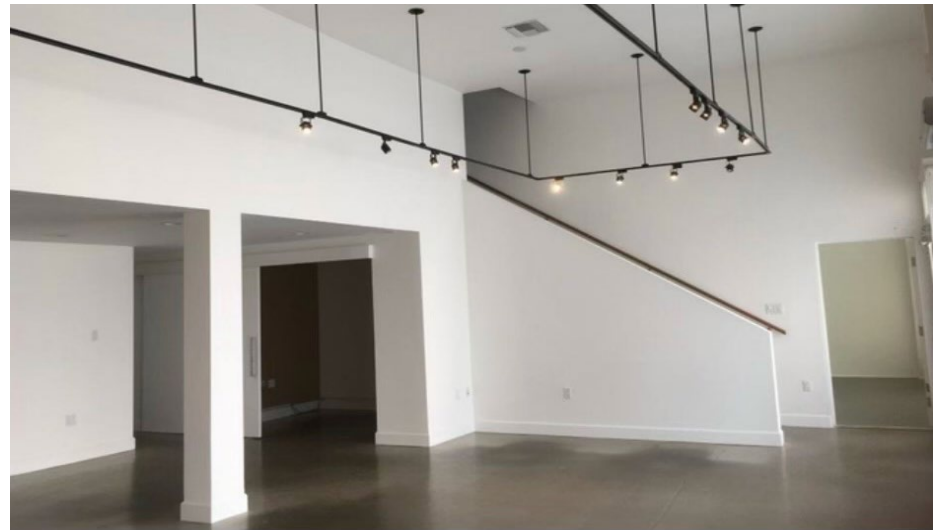
NOTOX NAILS

364

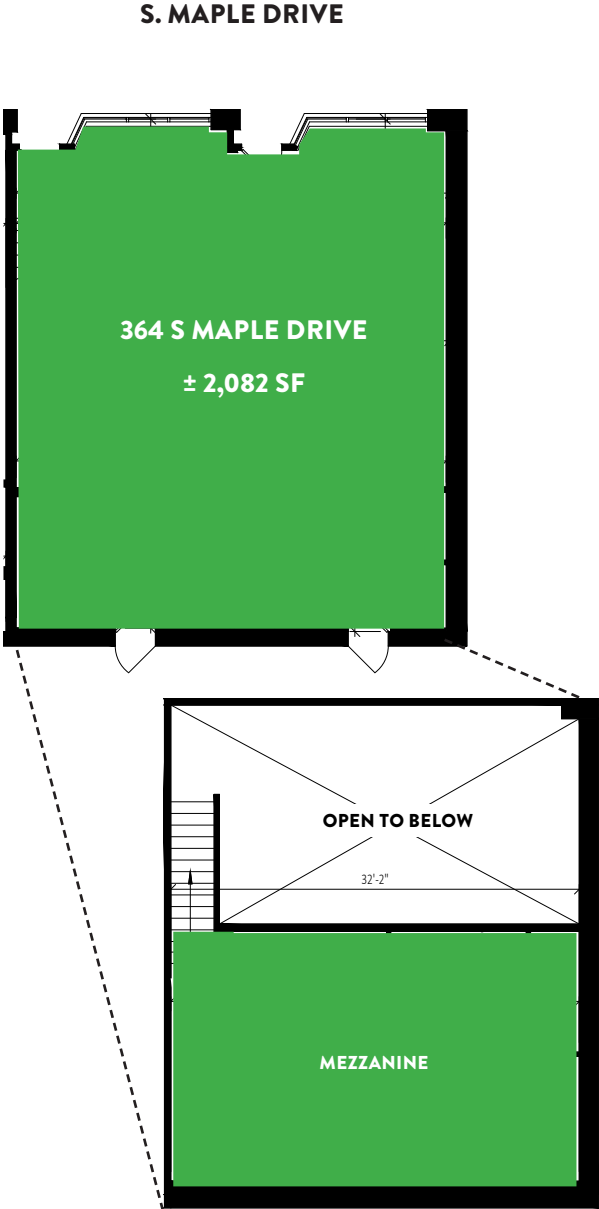




ADDITIONAL MEZZANINE SPACE (NOT PICTURED)



FLOOR PLAN





BEVERLY HILLS  
INTEGRATED  
SURGICAL PLAZA

# 9225 W. OLYMPIC BOULEVARD

BEVERLY HILLS

OLYMPIC CLEANER

Bella Cara

Bella Cara

BROWS \* SPRAY-TATTING \* MAKE UP

BellaCarabeautybar.com

BellaCarabeautybar.com

(310) 27-1030

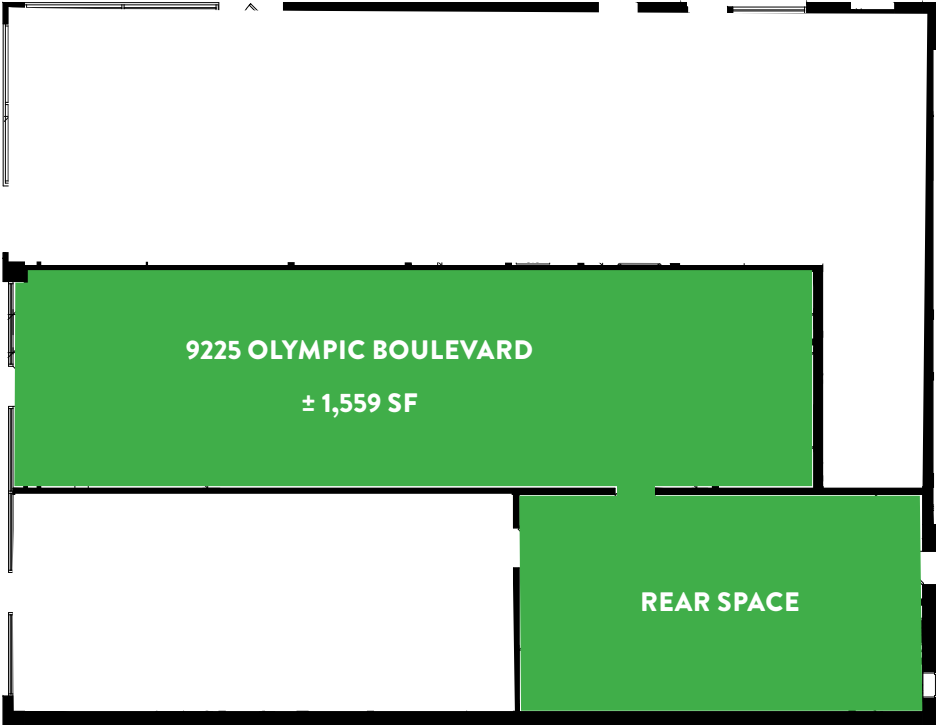
310-2

OPEN



FLOOR PLAN

OLYMPIC BOULEVARD



CENTURY CITY

BEVERLY HILLS GOLDEN TRIANGLE

OLYMPIC BOULEVARD

364 9225  
S. MAPLE DRIVE OLYMPIC DRIVE



**364**  
S. MAPLE  
DRIVE  
BEVERLY HILLS

**9225**  
W. OLYMPIC  
BOULEVARD  
BEVERLY HILLS



MAPLE DRIVE

OLYMPIC BOULEVARD



**ZACUTO GROUP**  
COMMERCIAL REAL ESTATE

**JOHN LOGAN**

*Associate Vice President*

931.561.9561

[john@zacutogroup.com](mailto:john@zacutogroup.com)

BRE# 02161147

*No warranty, express or implied, is made as to the accuracy of the information contained herein. This information is submitted subject to errors, omissions, change of price, rental or other conditions, withdrawal without notice. All parties who receive this material should not rely on it, but should use it as a starting point of analysis, and should independently confirm the accuracy of the information contained herein through a due diligence review of the books, records, files and documents that constitute reliable sources of the information described herein. Logos and images are for identification purposes only and may be trademarks of their respective companies. All terms provided are approximate. Leasee to verify. 9/2023*

**ZACUTOGROUP.COM | 310-469-9300**

