

The Cannery Unit 102 for Lease

1200 HARBOUR WAY SOUTH, RICHMOND, CA 94801



The Cannery Building

The Cannery is a historic multi-tenant industrial building. Each unit has exposed wood truss ceilings, utility sinks, professionally maintained common area restrooms, and single & three phase power.

Suite 102

- +/- 4,192 Rentable SF
- Lease Rate \$1.60 PSF Industrial Gross
- 1 Loading Dock with Adjacent Ramp
- Available April 1, 2026
- Additional Parking Yard/IOS Available

Additional Cannery & Area Information

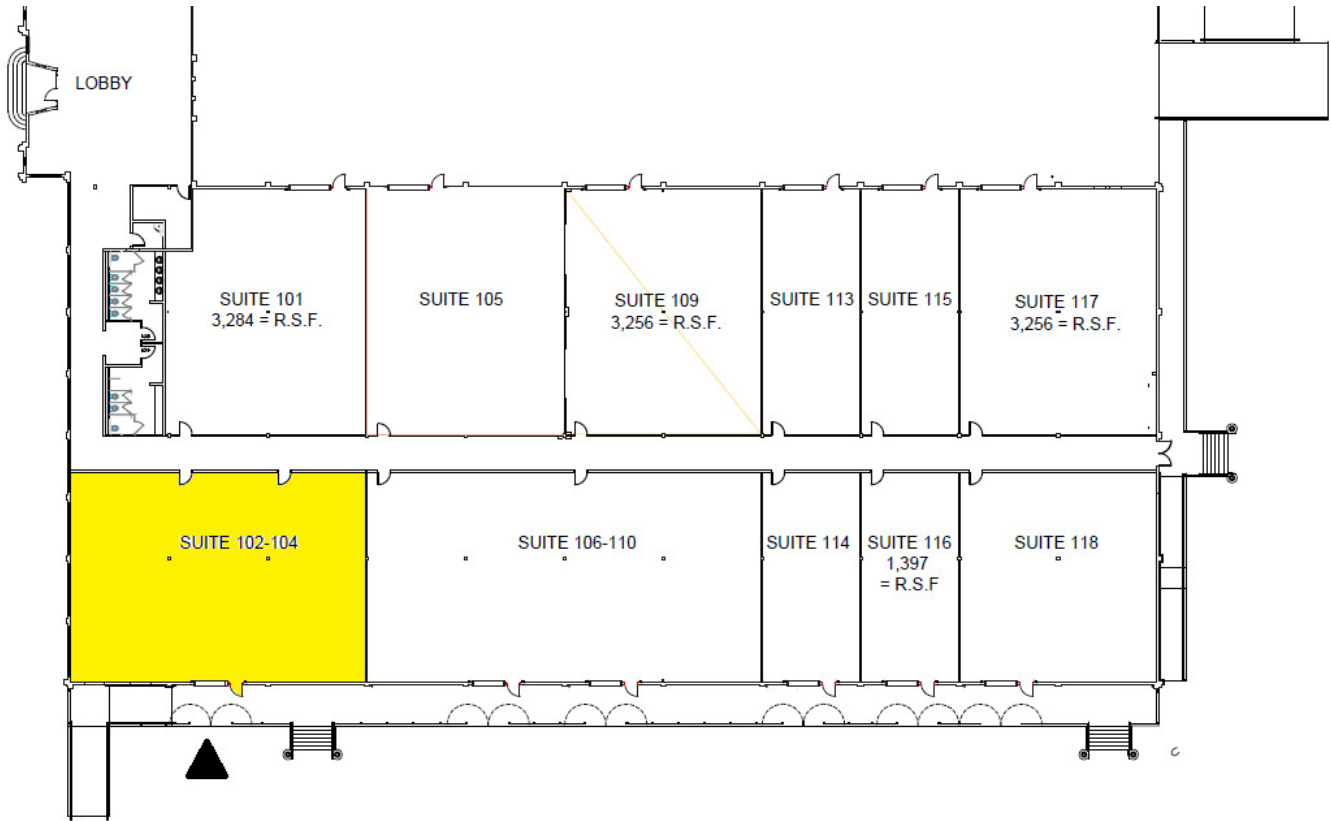
- On-site AC Transit Bus Stop Line 74
- Additional parking/IOS available from 0.5 to 2 acres at \$0.35 PSF IG
- Walking distance to Richmond Ferry Terminal
- Load Factor of 11.5% (rentable vs. useable SF)
- Immediate access to I-580 via. the Harbour Way South interchange



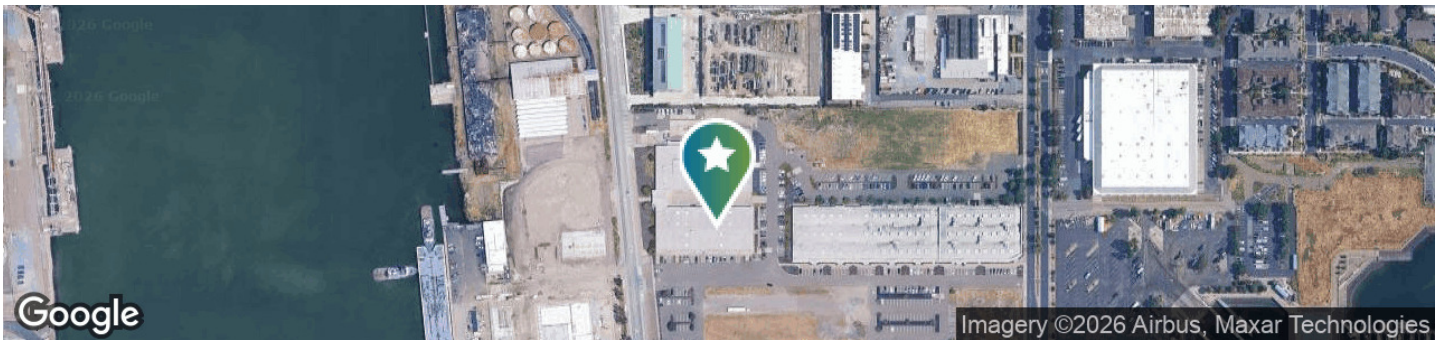
Dante Guazzo
NAINORCAL.COM

Dante Guazzo
Vice President
dguazzo@nainorcal.com
510.336.4714
CalDRE #01301236

South Wing Floorplan



Location Information



For More Information

Dante Guazzo
Vice President
dguazzo@nainorcal.com
510.336.4714
CalDRE #01301236