

**RIDDLE**  
**ASSOCIATES Inc.**  
Commercial Real Estate

# FLEX SPACE FOR LEASE

4007 Seaboard Court, Suite 7  
Portsmouth, VA 23701  
(Greenwood Industrial Park)



- Lease Rate: \$13.50 SF, NNN
- 2,000 SF
- 2 offices, conference room, reception room, kitchenette, 2 bathrooms
- 800 SF Warehouse with 1 10' x 12' overhead door
- 1,000 SF Mezzanine
- Zoned: IL
- Extra parking for box trucks

**EXCLUSIVELY OFFERED BY:**  
**LARRY RUMSEY | [lrumsey@riddleassociates.com](mailto:lrumsey@riddleassociates.com) | 757.353.2473**

**CALL TODAY FOR PRICING AND TO SCHEDULE YOUR PRIVATE TOUR!**

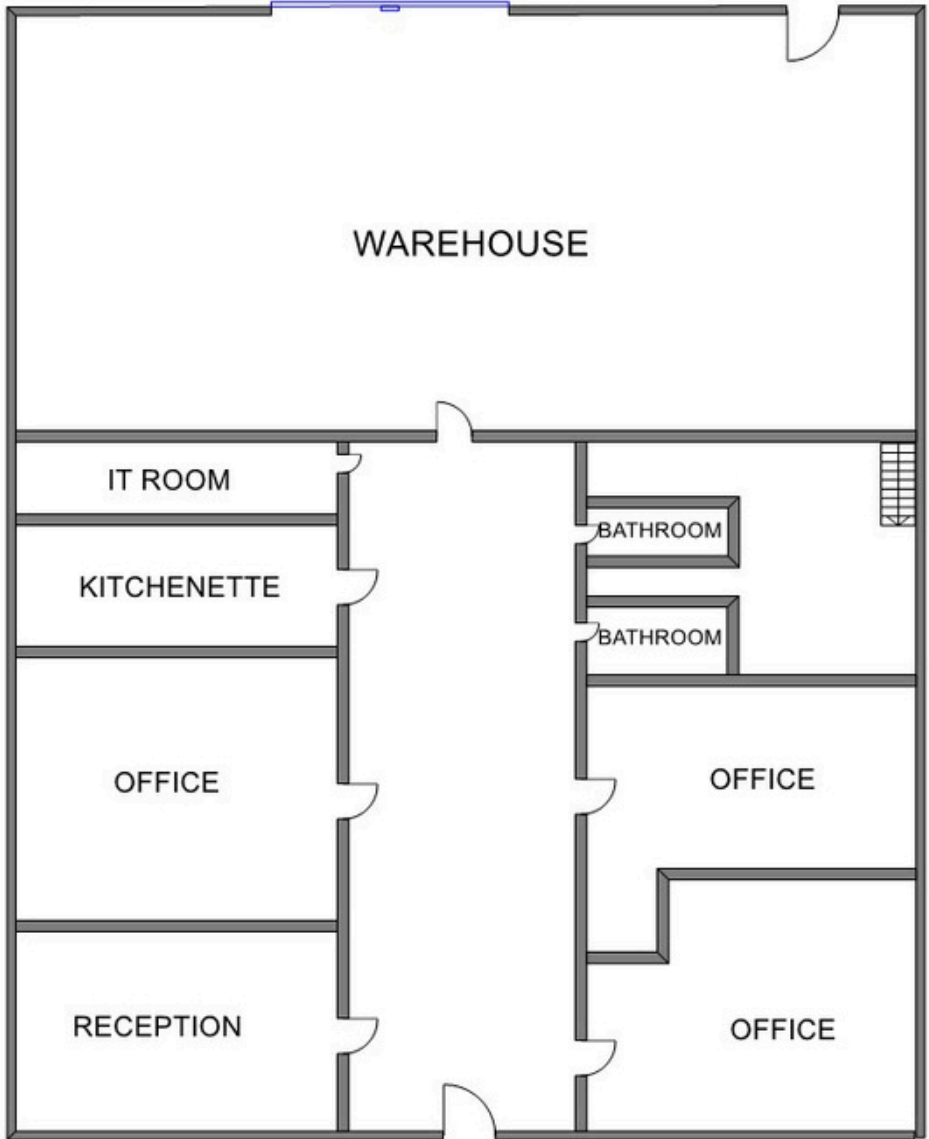
**RIDDLE ASSOCIATES, INC.**  
Commercial Real Estate

**“Real Estate Services Tailored to Your Needs”**

The information presented in this marketing flyer is obtained from sources believed to be reliable, but is not warranted. This offer is subject to prior sale or lease, errors, omissions or withdrawal without notice.

530 Woodlake Circle • Suite 100 • Chesapeake, VA 23320 • [www.riddleassociates.com](http://www.riddleassociates.com)

# 1ST FLOOR



## **RIDDLE ASSOCIATES, INC.**

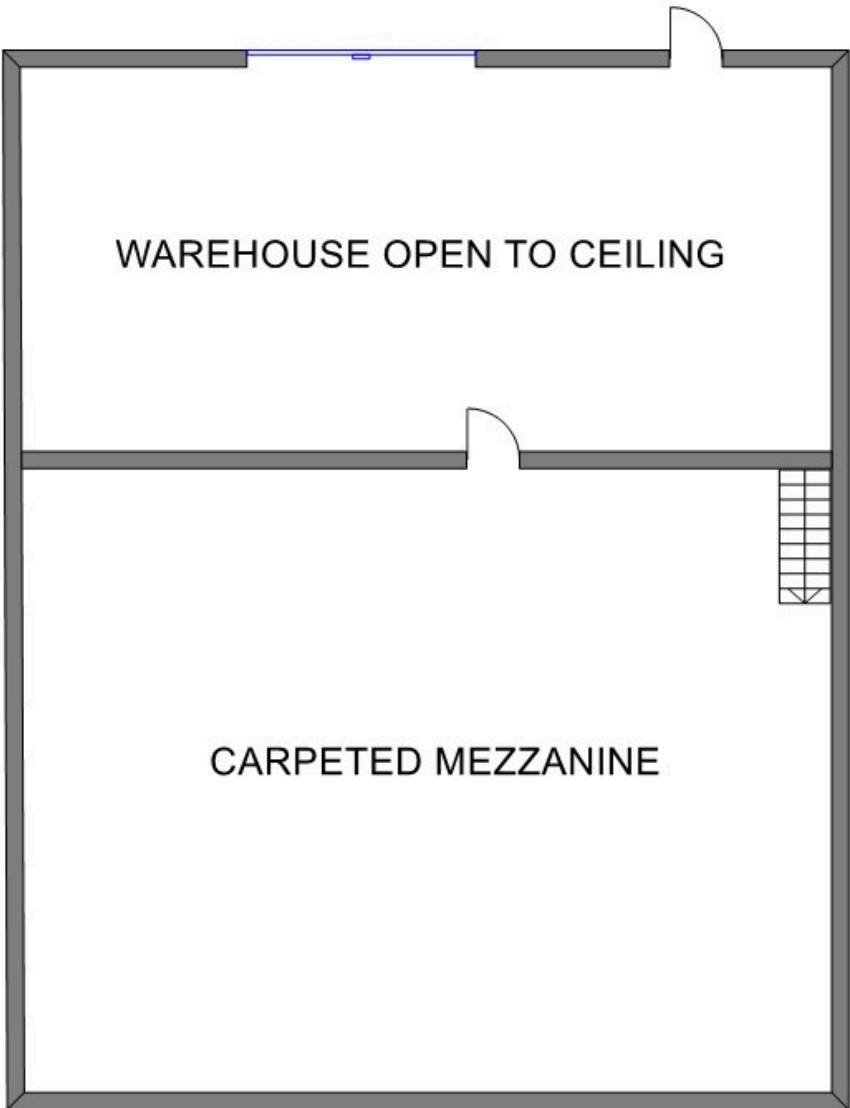
**Commercial Real Estate**

**“Real Estate Services Tailored to Your Needs”**

The information presented in this marketing flyer is obtained from sources believed to be reliable, but is not warranted. This offer is subject to prior sale or lease, errors, omissions or withdrawal without notice.

**530 Woodlake Circle • Suite 100 • Chesapeake, VA 23320 • [www.riddleassociates.com](http://www.riddleassociates.com)**

## 2ND FLOOR



# RIDDLE ASSOCIATES, INC.

Commercial Real Estate

“Real Estate Services Tailored to Your Needs”

The information presented in this marketing flyer is obtained from sources believed to be reliable, but is not warranted. This offer is subject to prior sale or lease, errors, omissions or withdrawal without notice.

530 Woodlake Circle • Suite 100 • Chesapeake, VA 23320 • [www.riddleassociates.com](http://www.riddleassociates.com)



# RIDDLE ASSOCIATES, INC.

Commercial Real Estate

“Real Estate Services Tailored to Your Needs”

*The information presented in this marketing flyer is obtained from sources believed to be reliable, but is not warranted. This offer is subject to prior sale or lease, errors, omissions or withdrawal without notice.*

530 Woodlake Circle • Suite 100 • Chesapeake, VA 23320 • [www.riddleassociates.com](http://www.riddleassociates.com)



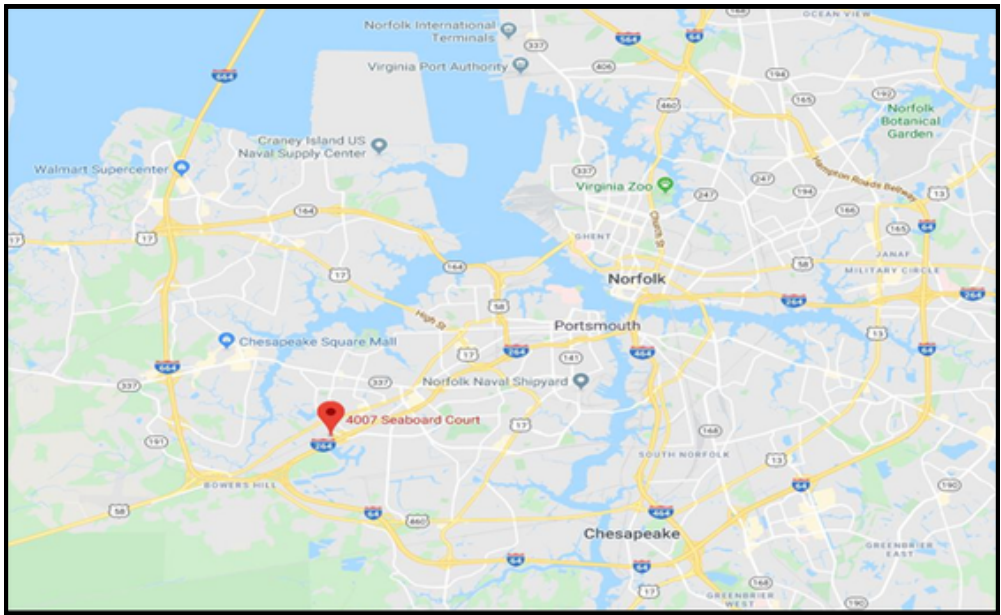
# RIDDLE ASSOCIATES, INC.

Commercial Real Estate

“Real Estate Services Tailored to Your Needs”

*The information presented in this marketing flyer is obtained from sources believed to be reliable, but is not warranted. This offer is subject to prior sale or lease, errors, omissions or withdrawal without notice.*

530 Woodlake Circle • Suite 100 • Chesapeake, VA 23320 • [www.riddleassociates.com](http://www.riddleassociates.com)



# RIDDLE ASSOCIATES, INC.

Commercial Real Estate

“Real Estate Services Tailored to Your Needs”

*The information presented in this marketing flyer is obtained from sources believed to be reliable, but is not warranted. This offer is subject to prior sale or lease, errors, omissions or withdrawal without notice.*

530 Woodlake Circle • Suite 100 • Chesapeake, VA 23320 • [www.riddleassociates.com](http://www.riddleassociates.com)