

TO LET - OFFICE

201 WEST GEORGE STREET

Glasgow, G2 2LW



PRIME CORNER LOCATION IN CBD

Key Highlights

- 1,143 to 2,947 sq ft
- Open plan accommodation
- Private phone booth
- Excellent natural light
- Refurbished to a high standard
- Dedicated tea prep
- 24 hour access
- Cycle facilities with room to accommodate 5 bikes

SAVILLS Glasgow
5th Floor Cadworks
Glasgow G2 6SE
0141 248 7342
savills.co.uk



Location

201 West George Street occupies a prominent corner position at the junction of West George Street and Wellington Street in the heart of Glasgow's City Centre. It has excellent access to public transport with both Glasgow Central and Queen Street station being within easy walking distance. In addition, Junction 19 of the M8 is located close by providing easy access to the motorway network in and around Glasgow.

Nearby occupiers including Edrington-Beam Suntory, Hewlett Packard, Aberdeen Standard and Page Group.

Description

201 West George Street provides 15,000 sq ft of modern office accommodation behind an attractive historic listed facade. The open plan space benefits from exceptional levels of natural light and has high floor to ceiling height.

Tenants of Robt Jones Holdings buildings are granted exclusive access to both the newly developed rooftop terrace at 145 St Vincent Street and the Gym Facilities at Wellington Place, 107 West Regent Street. Please see brochure for more details.

Accommodation

The accommodation comprises of the following

Name	sq ft	Rent	Rates Payable	Service charge	Availability
3rd - Floor	2,947	£26 /sq ft	£7.40 /sq ft	£5.16 /sq ft	Available
1st - Suite 1.2	1,143	£25 /sq ft	£7.28 /sq ft	£5.88 /sq ft	Available
Ground - Office Suite 2	1,171	£26 /sq ft	£7.31 /sq ft	£5.88 /sq ft	Under Offer

Specification

- Period high ceilings
- Tea Prep
- Passenger Lifts
- 24 Hour Access

Terms

New Fully Repairing and Insuring lease terms are available.

Viewings

Strictly by appointment with Savills or alternatively their joint

Contact

Colin McGhee

0141 222 4140

07714140771

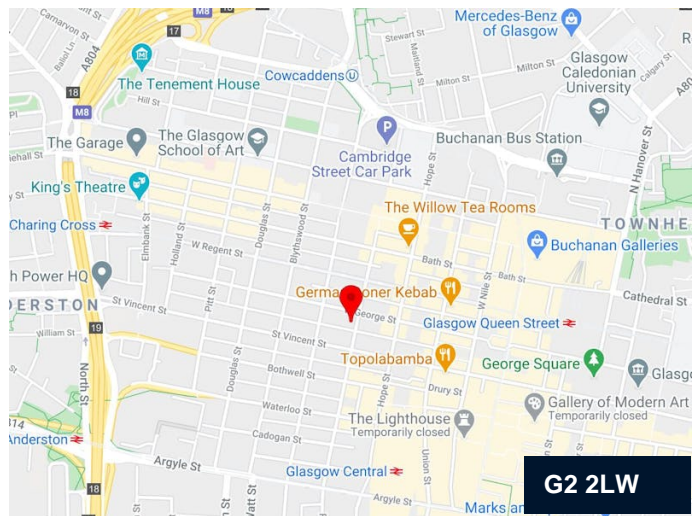
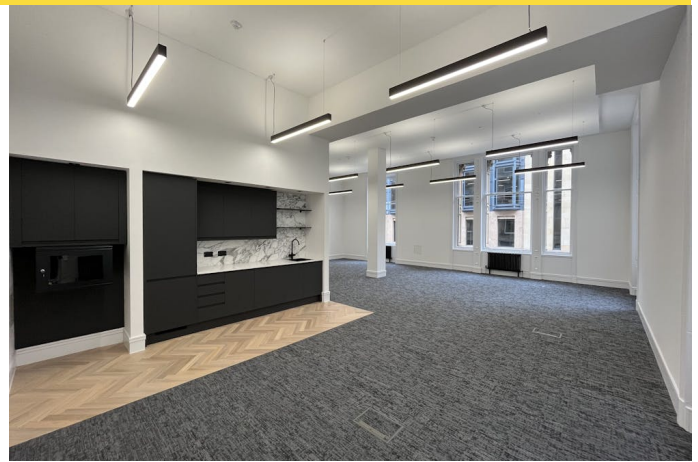
colin.mcgree@savills.com

Murray Irvine

07812447073

07812447073

murray.irvine@savills.com



IMPORTANT NOTICE

Savills, their clients and any joint agents give notice that: 1. They are not authorised to make or give any representations or warranties in relation to the property either here or elsewhere, either on their own behalf or on behalf of their client or otherwise. They assume no responsibility for any statement that may be made in these particulars. These particulars do not form part of any offer or contract and must not be relied upon as statements or representations of fact. 2. Any areas, measurements or distances are approximate. The text, photographs and plans are for guidance only and are not necessarily comprehensive. It should not be assumed that the property has all necessary planning, building regulation or other consents and Savills have not tested any services, equipment or facilities. Purchasers must satisfy themselves by inspection or otherwise. Generated by AgentsInsight / Generated on 05/01/2026

savills



