

# 100 CITY SQUARE

CHARLESTOWN | BOSTON, MA

2<sup>ND</sup> FLOOR: 24,335 SF



*Floor plans show existing conditions. Select demo is underway.*

*Floor Plan measurements are approximate and are for illustrative purposes only. While we do not doubt the floor plans accuracy, we make no guarantee, warranty or representation as to the accuracy and completeness of the floor plan.*



**ROB CRONIN**  
Senior Vice President  
617.951.4147  
rcronin@lpc.com

**BRENDAN MILLER**  
Senior Vice President  
617.951.4148  
bmiller@lpc.com

**JEFFREY MOORE**  
Senior Vice President  
617.951.4161  
jmoore@lpc.com

**CHRISTOPHER SCOTT**  
Vice President  
617.951.4135  
cscott@lpc.com

# 100 CITY SQUARE

CHARLESTOWN | BOSTON, MA

**3<sup>RD</sup> FLOOR: 24,335 SF**



*Floor plans show existing conditions. Select demo is underway.*

*Floor Plan measurements are approximate and are for illustrative purposes only. While we do not doubt the floor plans accuracy, we make no guarantee, warranty or representation as to the accuracy and completeness of the floor plan.*



**ROB CRONIN**  
Senior Vice President  
617.951.4147  
rcronin@lpc.com

**BRENDAN MILLER**  
Senior Vice President  
617.951.4148  
bmiller@lpc.com

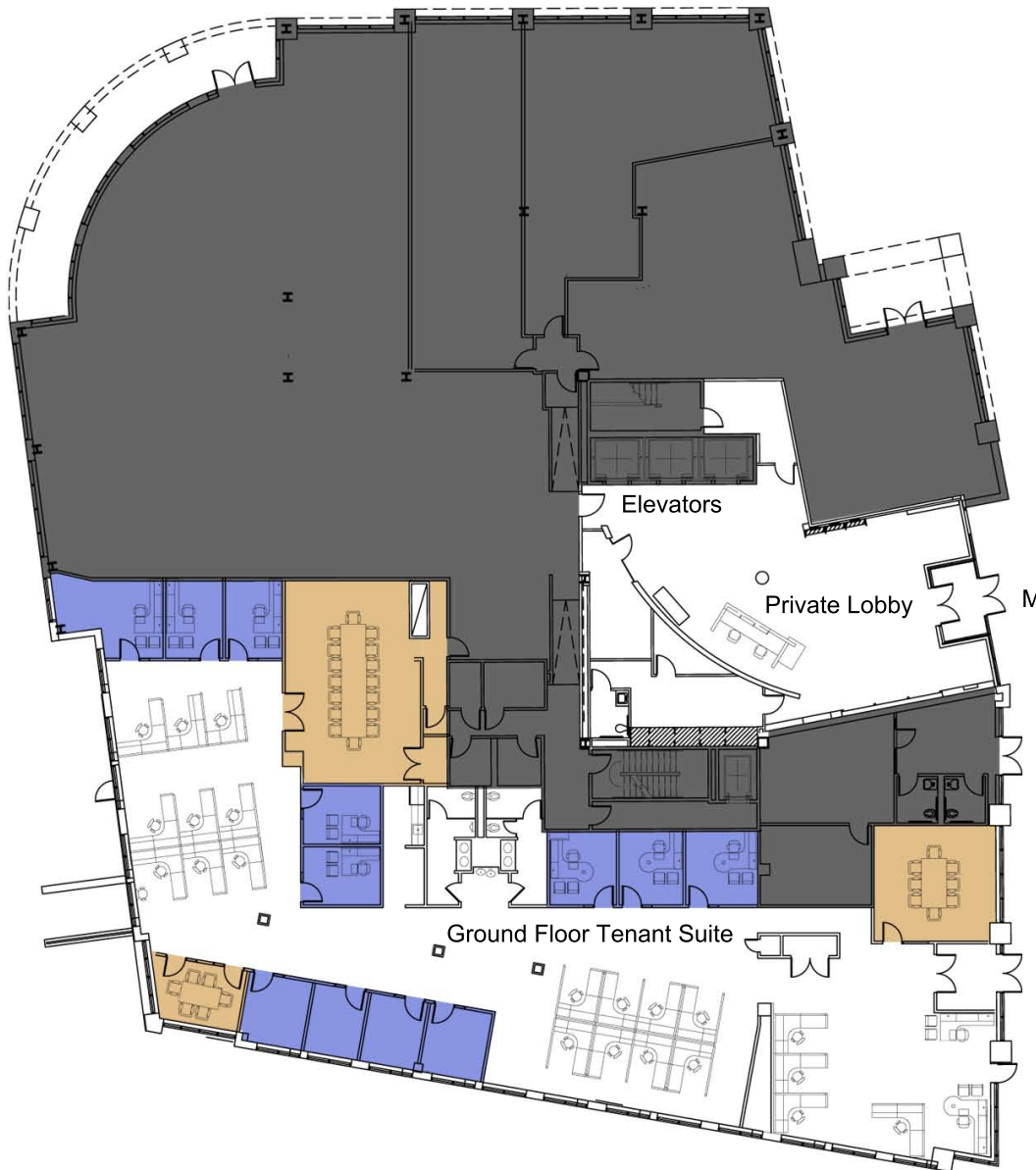
**JEFFREY MOORE**  
Senior Vice President  
617.951.4161  
jmoore@lpc.com

**CHRISTOPHER SCOTT**  
Vice President  
617.951.4135  
cscott@lpc.com

# 100 CITY SQUARE

CHARLESTOWN | BOSTON, MA

**GROUND FLOOR: 3,200 SF**



*Floor plans show existing conditions. Select demo is underway.*

*Floor Plan measurements are approximate and are for illustrative purposes only. While we do not doubt the floor plans accuracy, we make no guarantee, warranty or representation as to the accuracy and completeness of the floor plan.*



**ROB CRONIN**  
Senior Vice President  
617.951.4147  
rcronin@lpc.com

**BRENDAN MILLER**  
Senior Vice President  
617.951.4148  
bmiller@lpc.com

**JEFFREY MOORE**  
Senior Vice President  
617.951.4161  
jmoore@lpc.com

**CHRISTOPHER SCOTT**  
Vice President  
617.951.4135  
cscott@lpc.com