

1400  
CRYSTAL

Office For Lease

2,621 - 25,886 SF



Leasing Information:  
703.522.4600

**Gary Cook**  
703.284.3379  
gcook@lpc.com

**Stoddie Nibley**  
703.284.5884  
snibley@lpc.com

**Lincoln**

1530 Wilson Boulevard  
Suite 200  
Arlington, VA 22209

[www.lpc.com](http://www.lpc.com)

| Availabilities | SF                 | Date Available |
|----------------|--------------------|----------------|
| Suite 110      | 3,214 SF           | Immediately    |
| Suite 330      | 6,901 - 15,682 SF  | Immediately    |
| Suite 360      | 8,781 - 15,682 SF  | Immediately    |
| Suite 400      | 12,063 - 18,768 SF | March 2027     |
| Suite 430      | 6,705 - 18,768 SF  | August 2026    |
| Suite 500      | 20,170 SF          | May 2026       |
| Suite 700      | 14,579 SF          | Immediately    |
| Suite 870      | 2,621 SF           | Immediately    |
| Suite 1400     | 25,886 SF          | Immediately    |

### Property Highlights

- Immediate Access to I-395, GW Parkway, the Pentagon and Reagan National Airport
- Superb views of Washington, DC and the monuments
- Surrounded by over 100 restaurants, 4,500 hotel rooms and numerous retail amenities
- Adjacent to new Crystal City Water Park. Featuring new restaurant kiosks and seating areas, a full-service restaurant, new water features, bar & entertainment.
- Located in the heart of Crystal City and is only minutes from the Pentagon, Pentagon City, downtown Washington and Capitol Hill
- Located less than two-blocks from the Yellow and Blue Line Metro stop and the VRE station in Crystal City
- On-site fitness center, spectacular penthouse terrace, conference center, lounge, EV charging stations and secure bike cages
- Best in class including certifications for LEED Gold, WELL Health and Energy Star



**Gary Cook**      **Stoddie Nibley**  
 703.284.3379      703.284.5884  
 gcook@lpc.com      snibley@lpc.com

**Lincoln**

# 1400 CRYSTAL

Modern Interior + Exterior Design



Gary Cook  
703.284.3379  
gcook@lpc.com

Stoddie Nibley  
703.284.5884  
snibley@lpc.com

Lincoln

# 1400 CRYSTAL

National Landing



Gary Cook      Stoddie Nibley  
703.284.3379    703.284.5884  
gcook@lpc.com   snibley@lpc.com

# Lincoln

# 1400 CRYSTAL

Conference Center



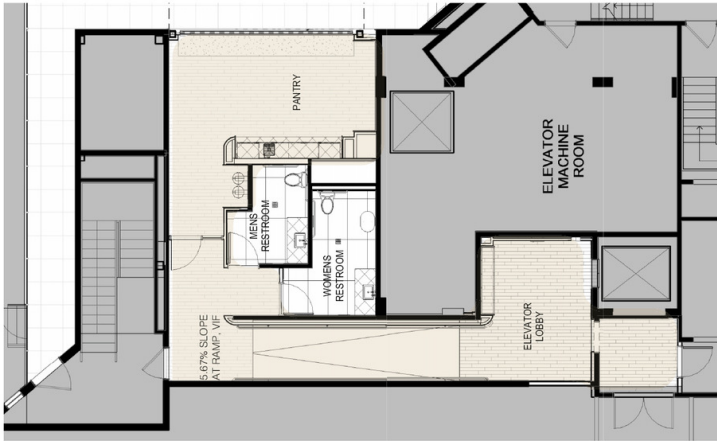
**Gary Cook**  
703.284.3379  
gcook@lpc.com

**Stoddie Nibley**  
703.284.5884  
snibley@lpc.com

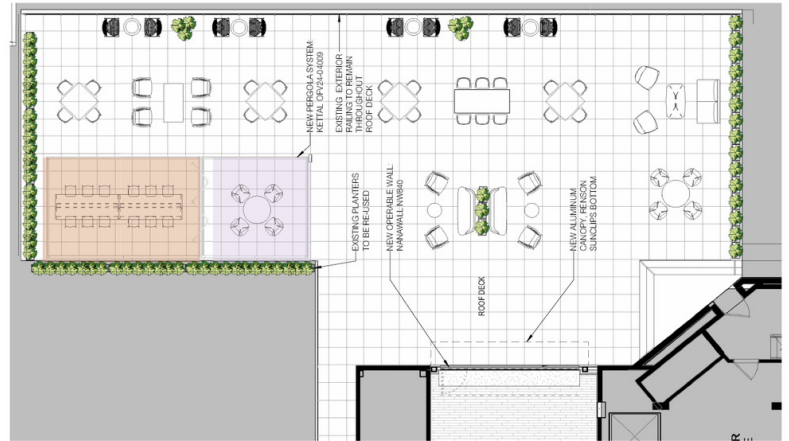
**Lincoln**

# 1400 CRYSTAL

Rooftop Terrace With Breathtaking Views



PENTHOUSE



ROOF TERRACE

Gary Cook      Stoddie Nibley  
703.284.3379    703.284.5884  
gcook@lpc.com   snibley@lpc.com

Lincoln



| Suite       | Size     | Description           | Virtual Tour              |
|-------------|----------|-----------------------|---------------------------|
| ■ Suite 110 | 3,214 SF | Available Immediately | <a href="#">View Here</a> |

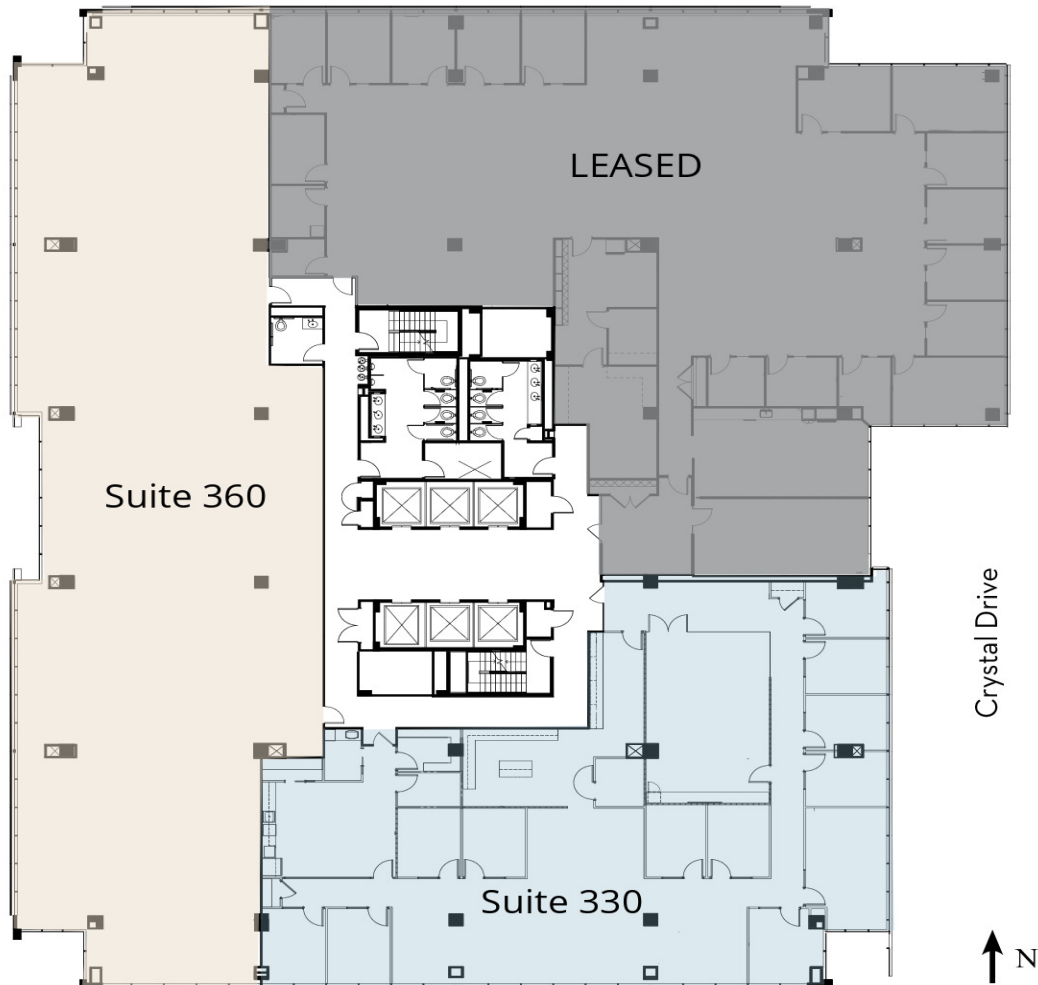
**Gary Cook**      **Stoddie Nibley**  
 703.284.3379      703.284.5884  
 gcook@lpc.com      snibley@lpc.com

**Lincoln**



Gary Cook      Stoddie Nibley  
703.284.3379    703.284.5884  
gcook@lpc.com   snibley@lpc.com

**Lincoln**



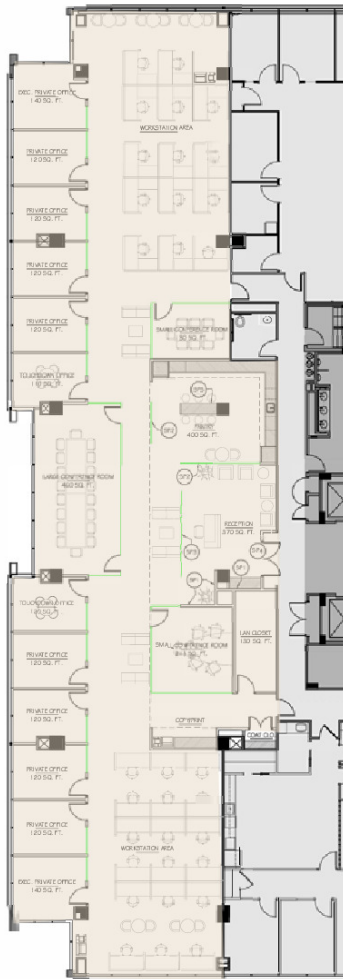
| Suite       | Size              | Description           | Virtual Tour              |
|-------------|-------------------|-----------------------|---------------------------|
| ■ Suite 330 | 6,901 - 15,682 SF | Available Immediately | <a href="#">View Here</a> |
| ■ Suite 360 | 8,781 - 15,682 SF | Available Immediately | <a href="#">View Here</a> |

**Gary Cook**  
 703.284.3379  
 gcook@lpc.com

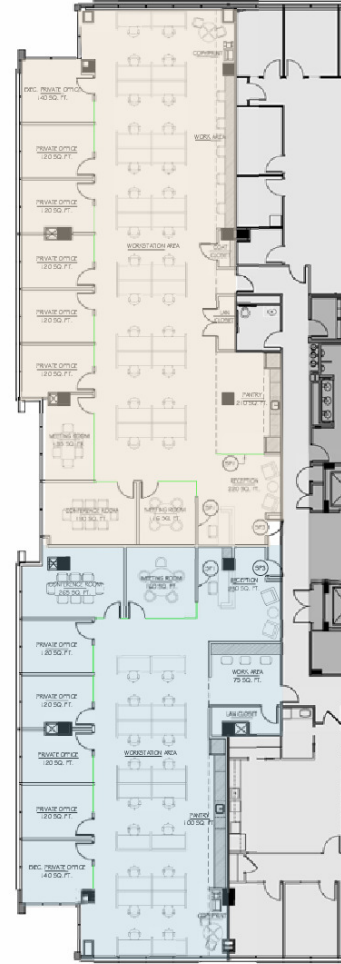
**Stoddie Nibley**  
 703.284.5884  
 snibley@lpc.com

**Lincoln**

### Single Tenant Plan



### Suite 360 A



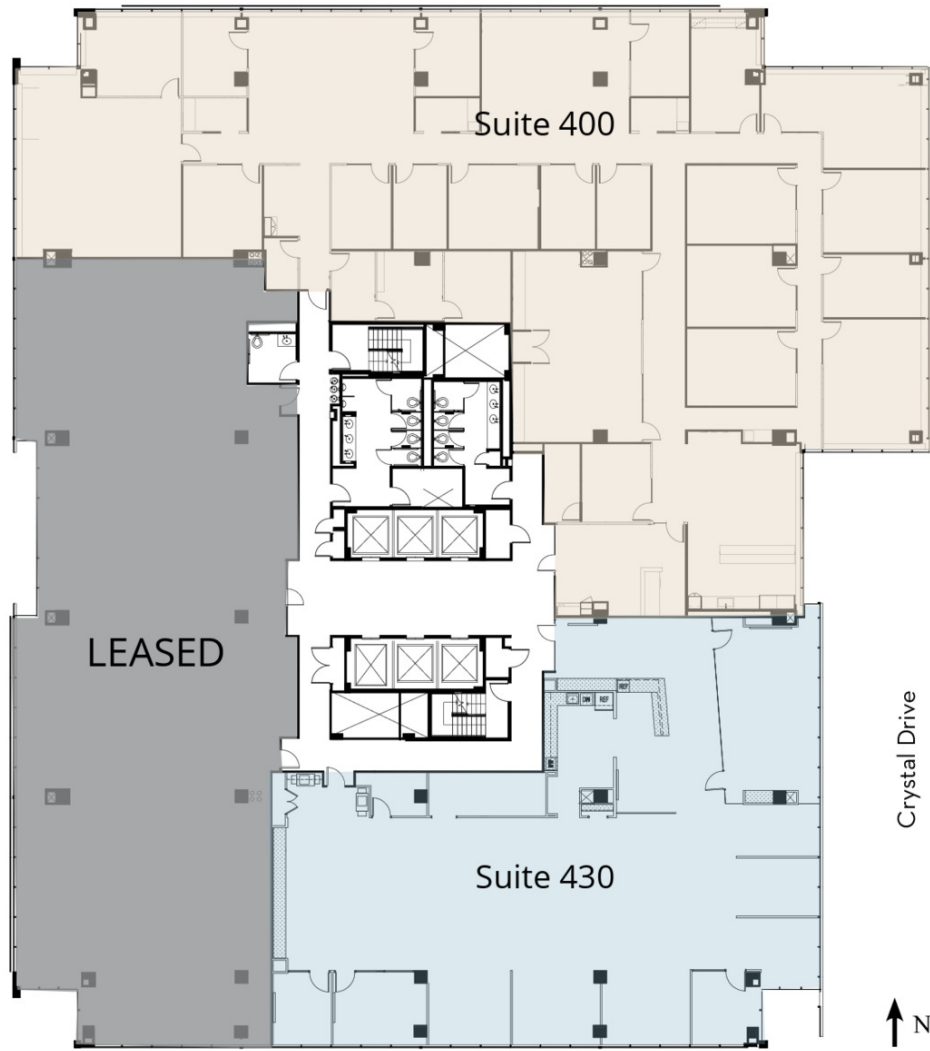
### Suite 360 B

### Two Tenant Plan

| Suite       | Size              | Description           | Virtual Tour              |
|-------------|-------------------|-----------------------|---------------------------|
| ■ Suite 360 | 8,781 - 15,682 SF | Available Immediately | <a href="#">View Here</a> |

**Gary Cook**      **Stoddie Nibley**  
 703.284.3379      703.284.5884  
 gcook@lpc.com      snibley@lpc.com

**Lincoln**

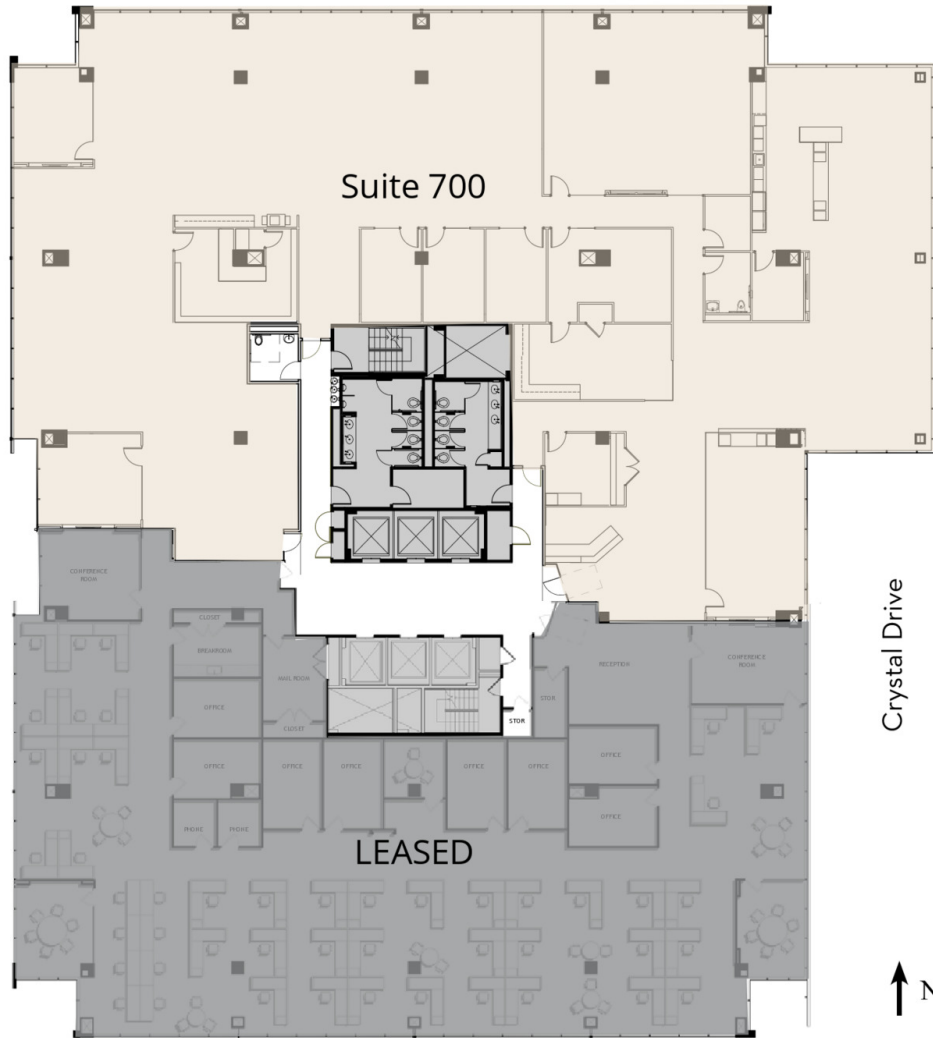


| Suite       | Size               | Description           |
|-------------|--------------------|-----------------------|
| ■ Suite 400 | 12,063 - 18,768 SF | Available March 2027  |
| ■ Suite 430 | 6,705 - 18,768 SF  | Available August 2026 |

**Gary Cook**      **Stoddie Nibley**  
 703.284.3379      703.284.5884  
 gcook@lpc.com      snibley@lpc.com

**Lincoln**

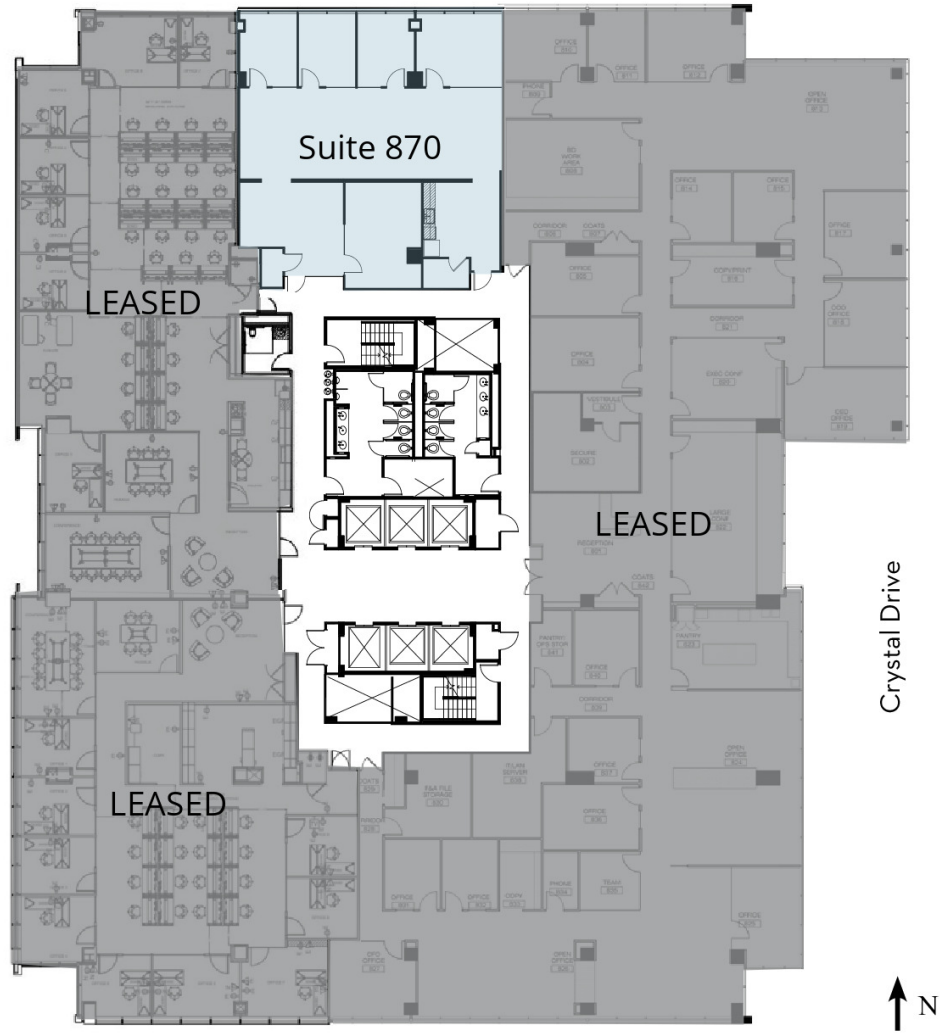




| Suite       | Size      | Description |
|-------------|-----------|-------------|
| ■ Suite 700 | 14,579 SF | Immediately |

**Gary Cook**      **Stoddie Nibley**  
 703.284.3379      703.284.5884  
 gcook@lpc.com      snibley@lpc.com

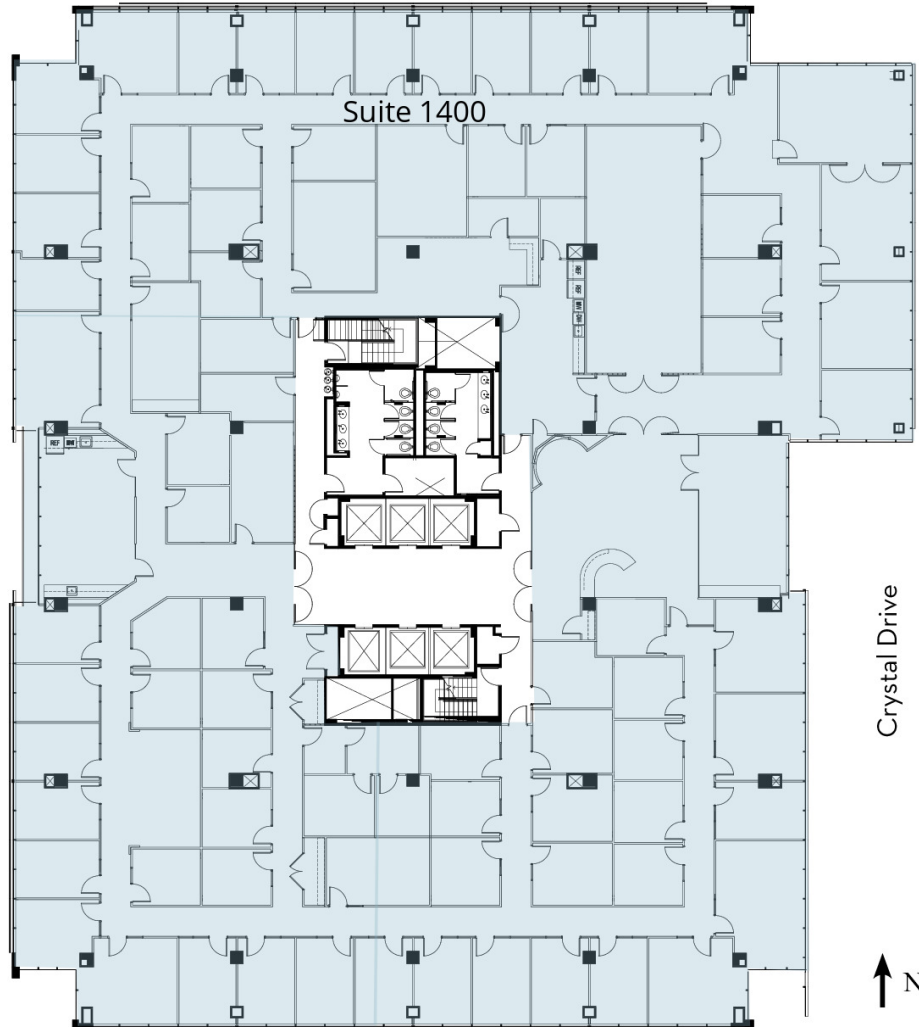
**Lincoln**



| Suite       | Size     | Description           | Virtual Tour              |
|-------------|----------|-----------------------|---------------------------|
| ■ Suite 870 | 2,621 SF | Available Immediately | <a href="#">View Here</a> |

**Gary Cook**      **Stoddie Nibley**  
 703.284.3379      703.284.5884  
 gcook@lpc.com      snibley@lpc.com

**Lincoln**



| Suite        | Size      | Description           | Virtual Tour              |
|--------------|-----------|-----------------------|---------------------------|
| ■ Suite 1400 | 25,886 SF | Available Immediately | <a href="#">View Here</a> |

**Gary Cook**      **Stoddie Nibley**  
 703.284.3379      703.284.5884  
 gcook@lpc.com      snibley@lpc.com

**Lincoln**

# 1400 CRYSTAL

Water Park



Gary Cook

703.284.3379  
gcook@lpc.com

Stoddie Nibley

703.284.5884  
snibley@lpc.com

Lincoln



# 1400 CRYSTAL

Leasing Information:  
703.522.4600

**Gary Cook**  
703.284.3379  
gcook@lpc.com

**Stoddie Nibley**  
703.284.5884  
snibley@lpc.com

## Lincoln

1530 Wilson Boulevard  
Suite 200  
Arlington, VA 22209

[www.lpc.com](http://www.lpc.com)