

73-17

BEACH CHANNEL DRIVE ROCKAWAY BEACH, QUEENS

Corner of Beach Channel Drive & Beach 73rd Street

RETAIL FOR LEASE

APPROXIMATE SIZE

Ground Floor: 3,950 SF + 850 SF Mezzanine

ASKING RENT

\$45 PSF

POSSESSION

Immediate

TERM

Negotiable

FRONTAGE

45 FT

COMMENTS

- Corner retail space offering great exposure
- In the heart of "beach community" steps from retail, boardwalk, and local beaches
- White-box condition
- Bathroom in place
- All uses considered

NEIGHBORS

The YMCA • Ted's Auto Repair • Subway • Family Dollar • Stop & Shop • Impresion Beauty Salon • Boardwalk Pizzeria • Starbucks • Key Food

TRANSPORTATION

A



Long Island Rail Road



NOAM AZIZ

Senior Director
212.468.5984
naziz@meridiancapital.com

MICHAEL ESCAVA

Associate
212.468.5918
mescava@meridiancapital.com

GRIFFIN HANES

Associate
212.468.5944
ghanes@meridiancapital.com



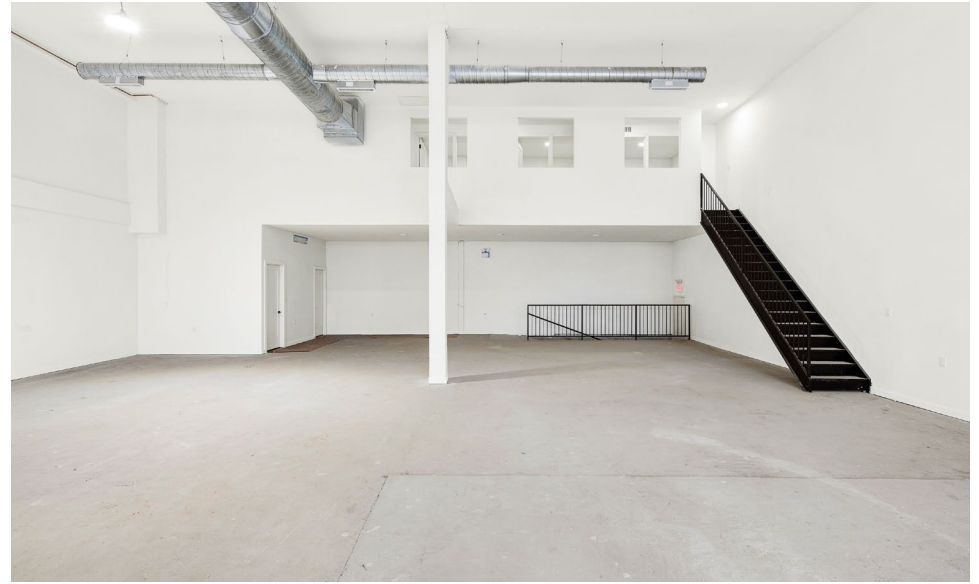
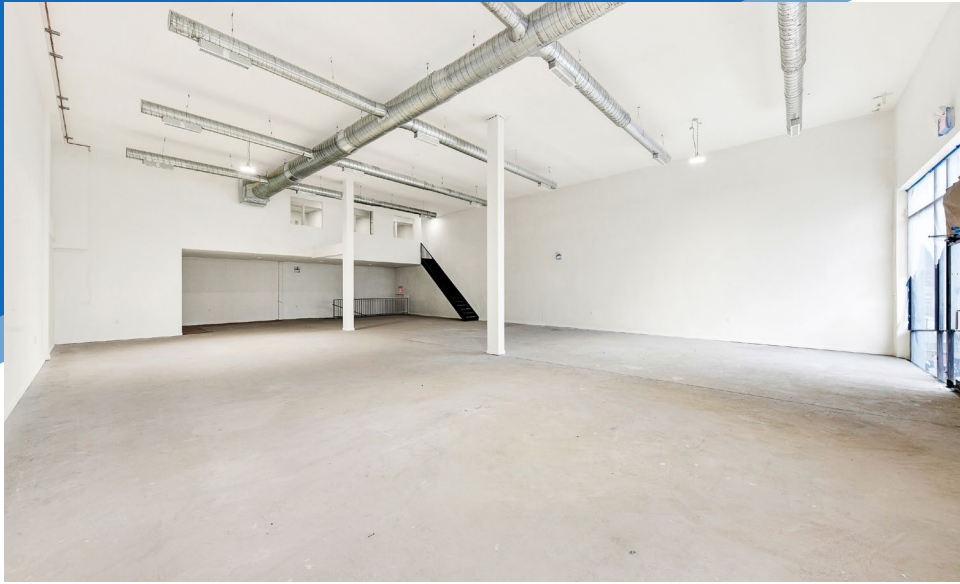
MERIDIAN
RETAIL LEASING

All information supplied is from sources deemed reliable and is furnished subject to errors, omissions, modifications, removal of the listing from sale or lease, and to any listing conditions, including the rates and manner of payment of commissions for particular offerings imposed by Meridian Capital Group. This information may include estimates and projections prepared by Meridian Capital Group with respect to future events, and these future events may or may not actually occur. Such estimates and projections reflect various assumptions concerning anticipated results. While Meridian Capital Group believes these assumptions are reasonable, there can be no assurance that any of these estimates and projections will be correct. Therefore, actual results may vary materially from these estimates and projections. Any square footage dimensions set forth are approximate.

73-17 BEACH CHANNEL DRIVE

ROCKAWAY BEACH, QUEENS | Corner of Beach Channel Drive and Beach 73rd Street

RETAIL FOR LEASE



INTERIOR

NOAM AZIZ
Senior Director
212.468.5984
naziz@meridiancapital.com

MICHAEL ESCAVA
Associate
212.468.5918
mescava@meridiancapital.com

GRIFFIN HANES
Associate
212.468.5944
ghanes@meridiancapital.com



MERIDIAN
RETAIL LEASING

All information supplied is from sources deemed reliable and is furnished subject to errors, omissions, modifications, removal of the listing from sale or lease, and to any listing conditions, including the rates and manner of payment of commissions for particular offerings imposed by Meridian Capital Group. This information may include estimates and projections prepared by Meridian Capital Group with respect to future events, and these future events may or may not actually occur. Such estimates and projections reflect various assumptions concerning anticipated results. While Meridian Capital Group believes these assumptions are reasonable, there can be no assurance that any of these estimates and projections will be correct. Therefore, actual results may vary materially from these estimates and projections. Any square footage dimensions set forth are approximate.

73-17 BEACH CHANNEL DRIVE

ROCKAWAY BEACH, QUEENS | Corner of Beach Channel Drive and Beach 73rd Street

RETAIL FOR LEASE



NEIGHBORS

NOAM AZIZ

Senior Director
212.468.5984
naziz@meridiancapital.com

MICHAEL ESCAVA

Associate
212.468.5918
mescava@meridiancapital.com

GRIFFIN HANES

Associate
212.468.5944
ghanes@meridiancapital.com



MERIDIAN
RETAIL LEASING

All information supplied is from sources deemed reliable and is furnished subject to errors, omissions, modifications, removal of the listing from sale or lease, and to any listing conditions, including the rates and manner of payment of commissions for particular offerings imposed by Meridian Capital Group. This information may include estimates and projections prepared by Meridian Capital Group with respect to future events, and these future events may or may not actually occur. Such estimates and projections reflect various assumptions concerning anticipated results. While Meridian Capital Group believes these assumptions are reasonable, there can be no assurance that any of these estimates and projections will be correct. Therefore, actual results may vary materially from these estimates and projections. Any square footage dimensions set forth are approximate.