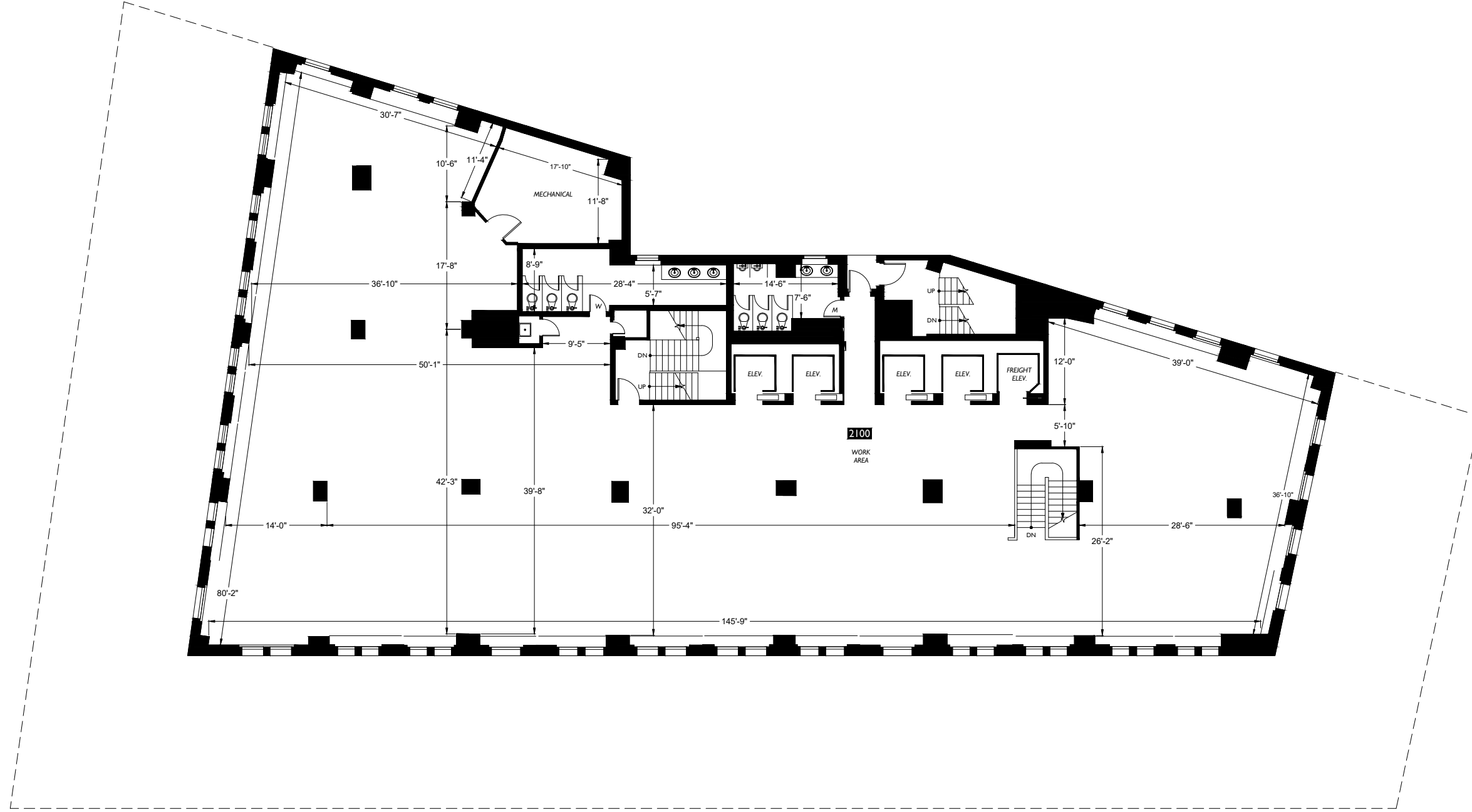
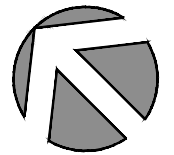


C23-655

Cliff Street



John Street



Pearl Street

Floor Plan

21

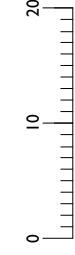
Floor

Office Building
 111 John Street
 New York, NY 10038

Subject

Braun Management, Inc.
 160 Broadway, First Floor
 New York, NY 10038

Client



Scale



2DFLOORPLANS.COM
 206-328-7410
 600 NW Gilman Blvd. Suite E
 Issaquah, WA 98027

Measured: September 2017 Project: C25-557