

4003-4005 WESTFAX DRIVE

Chantilly, VA 20151

Industrial/Flex For Lease

4,400 - 8,800 SF



Leasing Information:
703.522.4600

Eamon McCrann **Jack Pezzulla**
703.284.5861 703.284.5864
emccrann@lpc.com jpezzulla@lpc.com

Lincoln

1530 Wilson Boulevard
Suite 200
Arlington, VA 22209

www.lpc.com

4003-4005 WESTFAX DRIVE

Chantilly, VA 20151

Industrial/Flex For Lease

4,400 - 8,800 SF



Property Highlights

- 18' Clear Height
- 30' x 45' Column Spacing
- Main electrical service is provided by 120/208 volt or 277/480 volt, three phase, four wire main distribution panel
- Fully wet sprinkler system with hardwire smoke/fire alarms

Availabilities

SF

Lease Rate

Date Available

4005G

4,400 SF

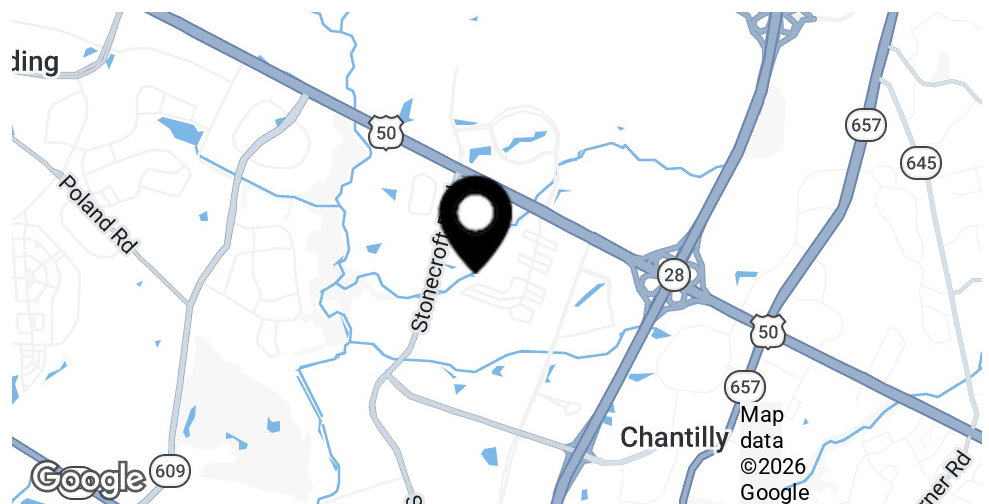
Negotiable

4003CD

8,800 SF

Negotiable

Immediately



Eamon McCrann

Jack Pezzulla

703.284.5861

703.284.5864

emccrann@lpc.com

jpezzulla@lpc.com

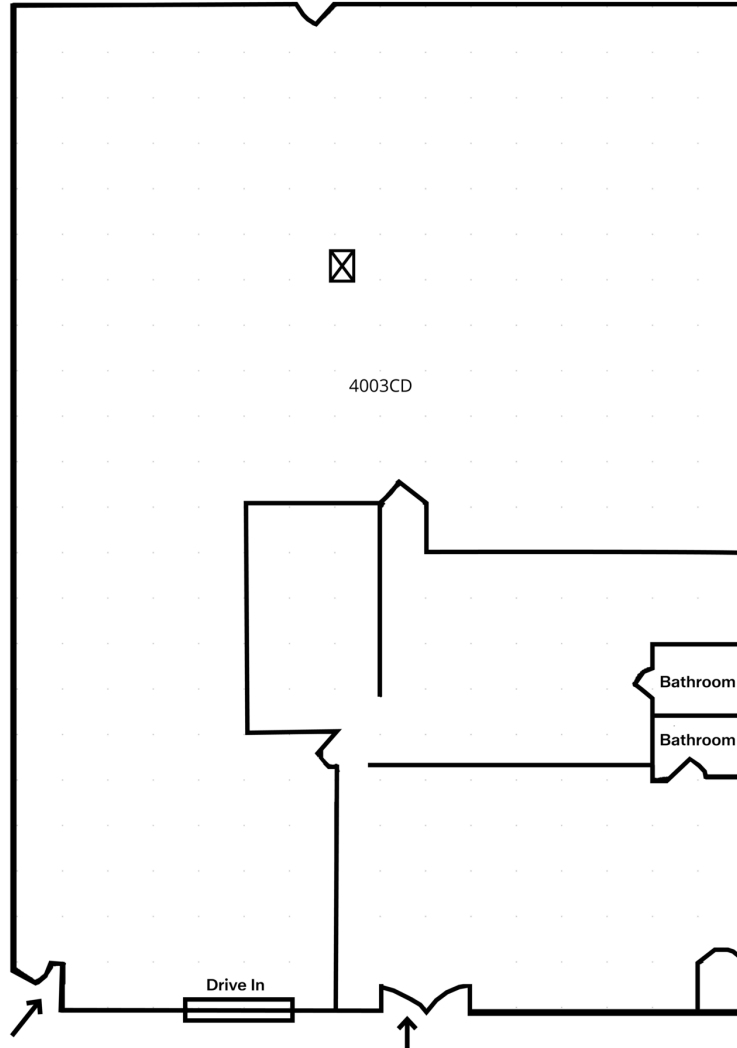
Lincoln

4003-4005 WESTFAX DRIVE

Chantilly, VA 20151

4003CD

8,800 SF



Suite	Size	Lease Rate	Description
4003CD	8,800 SF	Negotiable	18' Clear Height. 30' x 45' Column Spacing. 18' Clear Height. 30' x 45' Column Spacing. 1 Drive-in (at-grade). Conditioned Office/Showroom (~800sf). 2 Unisex Bathrooms.

Eamon McCrann **Jack Pezzulla**
703.284.5861 703.284.5864
emccrann@lpc.com jpezzulla@lpc.com

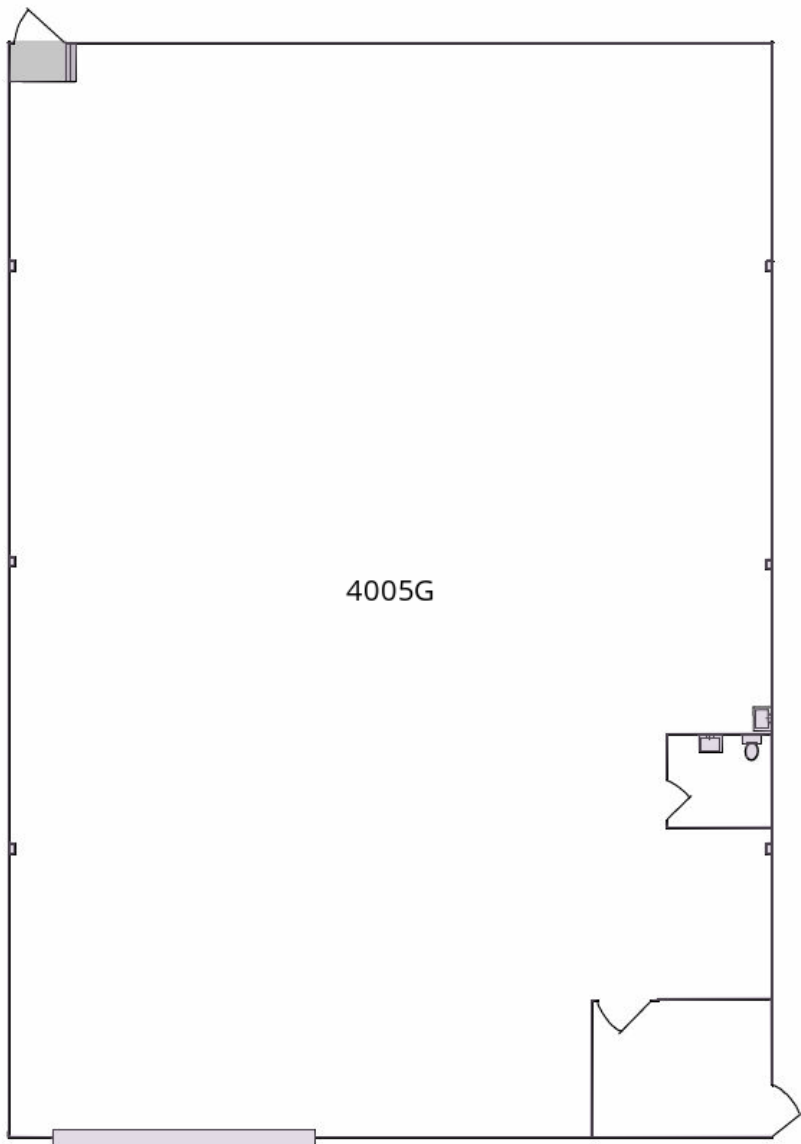
Lincoln

4003-4005 WESTFAX DRIVE

Chantilly, VA 20151

4005G

4,400 SF



4005G

Suite	Size	Lease Rate	Description
■ 4005G	4,400 SF	Negotiable	18' Clear Height. 30' x 45' Column Spacing. 1 Drive-in. 1 Unisex Bathroom. Small front office.

Eamon McCrann **Jack Pezulla**
703.284.5861 703.284.5864
emccrann@lpc.com jpezulla@lpc.com

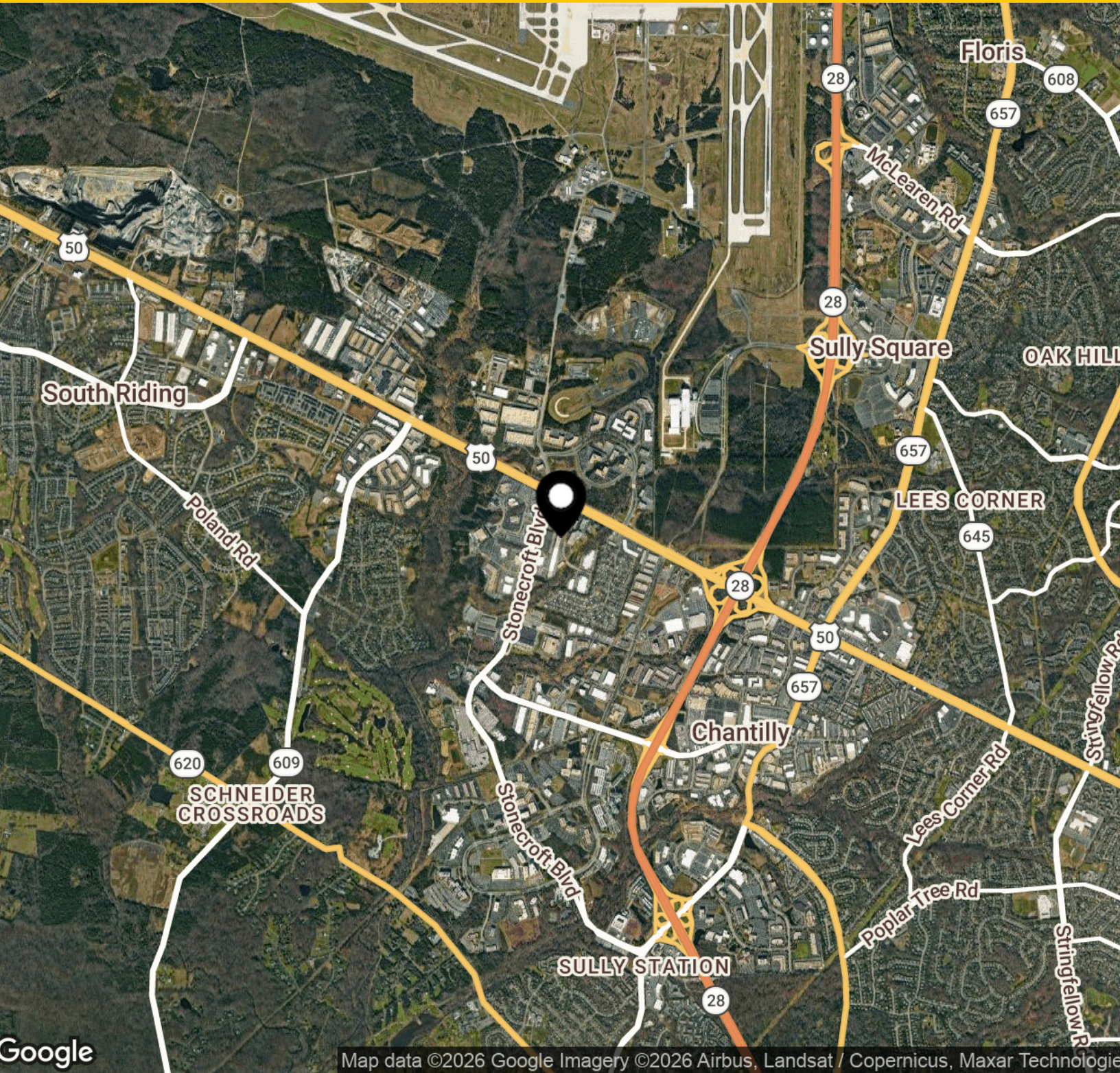
Lincoln

4003-4005 WESTFAX DRIVE

Chantilly, VA 20151

Map

4,400 - 8,800 SF



Google

Map data ©2026 Google Imagery ©2026 Airbus, Landsat / Copernicus, Maxar Technologies

Eamon McCrann

Jack Pezulla

703.284.5861

703.284.5864

emccrann@lpc.com

jpezulla@lpc.com

Lincoln



4003-4005 WESTFAX DRIVE

Chantilly, VA 20151

Leasing Information:
703.522.4600

Eamon McCrann
703.284.5861
emccrann@lpc.com

Jack Pezzulla
703.284.5864
jpezzulla@lpc.com

Lincoln

1530 Wilson Boulevard
Suite 200
Arlington, VA 22209

www.lpc.com