

FOR SUBLEASE

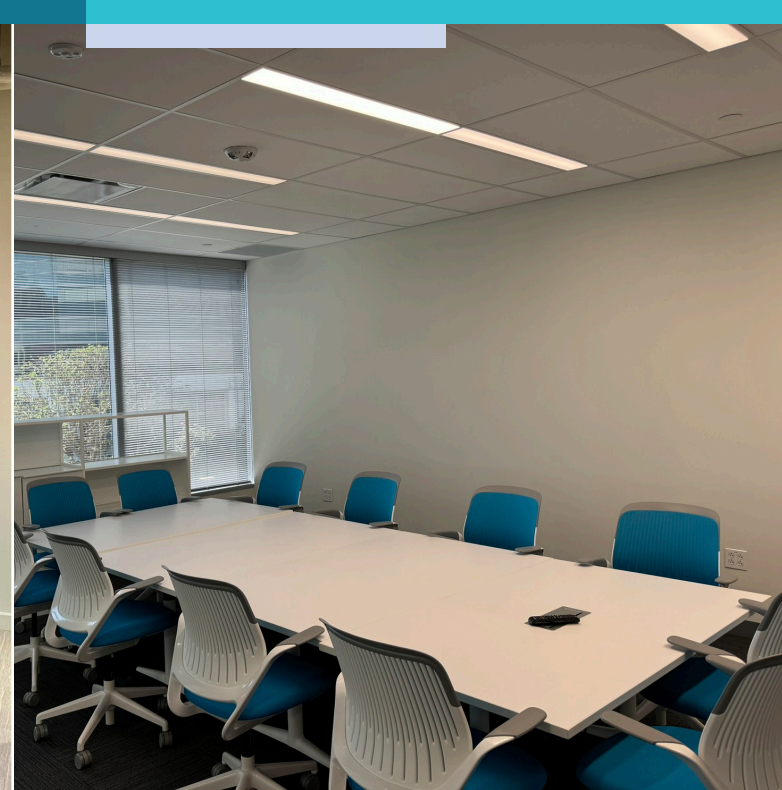
# Playa Playa

DISTRICT

6080 CENTER DRIVE

Playa  
DISTRICT

CBRE



**Size:** 27,081 SF

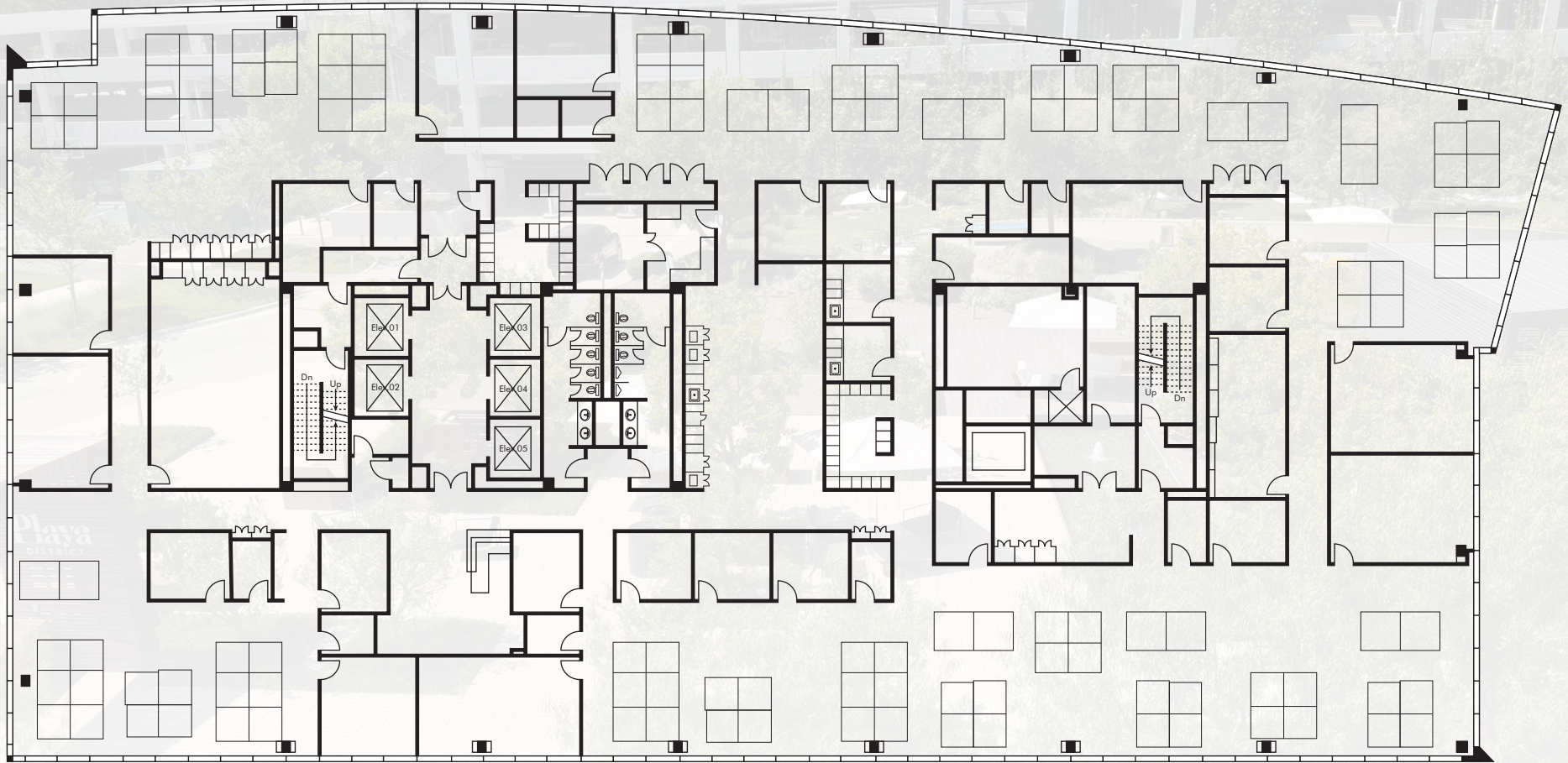
**Floor:** 3rd Floor

**Term:** Sublease thru May 31, 2026

**Other Features:**

- Basement storage space with A/C - 3,031 SF
- Upscale plug & play opportunity
- Furniture negotiable with inventory available upon request

# Overview



PLAYA DISTRICT 6080 CENTER DR - FLOOR PLAN

# Floor Plan



# Site Amenities

Playa District is an agile campus built for community and collaboration.

## WELLNESS



- Indoor/Outdoor fitness facilities
- Group fitness classes
- Sports courts and gaming areas

## CONVENIENCE



- On-site concierge
- Dog-friendly campus
- Wi-Fi enabled outdoor meeting spaces

## NOURISHMENT



- Daily rotating food trucks
- Weekly farmers market
- Sit down café with grab and go food services





### Demographics

214,103  
population  
within 3 miles

70.6%  
of population within 1  
mile hold a Bachelor's  
Degree or higher

86.1%  
of population  
within 1 mile hold  
White Collar jobs

# Local Amenities

FOR SUBLEASE

# Playa Playa DISTRICT

6080 CENTER DRIVE

For more information, please contact:

**GREGORY WALSH**

First Vice President

Lic. 01417008

+1 310 363 4925

[gregory.walsh@cbre.com](mailto:gregory.walsh@cbre.com)

© 2024 CBRE, Inc. All rights reserved. This information has been obtained from reliable sources but has not been verified for accuracy or completeness. CBRE, Inc. makes no guarantee, representation, or warranty and accepts no responsibility or liability for the accuracy, completeness, or reliability of the information contained herein. You should conduct a careful, independent investigation of the property and verify all information. Any reliance on this information is solely at your own risk. CBRE and the CBRE logo are service marks of CBRE, Inc. All other marks displayed on this document are the property of their respective owners, and the use of such marks does not imply any affiliation with or endorsement of CBRE. Photos herein are the property of their respective owners. Use of these images without the express written consent of the owner is prohibited.

**CBRE**