

Specifications

±6.1 AC Paved and Fenced
TOTAL ACREAGE

±34,000 SF
BUILDING SIZE

61 Doors, Clear Span
TERMINAL

±2,500 SF, 2 Drive-Ins
MAINTENANCE FACILITY

±3,200 SF
OFFICE

M-3 Industrial
ZONING

1.2 MI to I-287
4.3 MI to Route 28
6.1 MI to I-95 Exit 10
ACCESSIBILITY

For additional property information or to arrange an inspection, please contact the exclusive brokers:

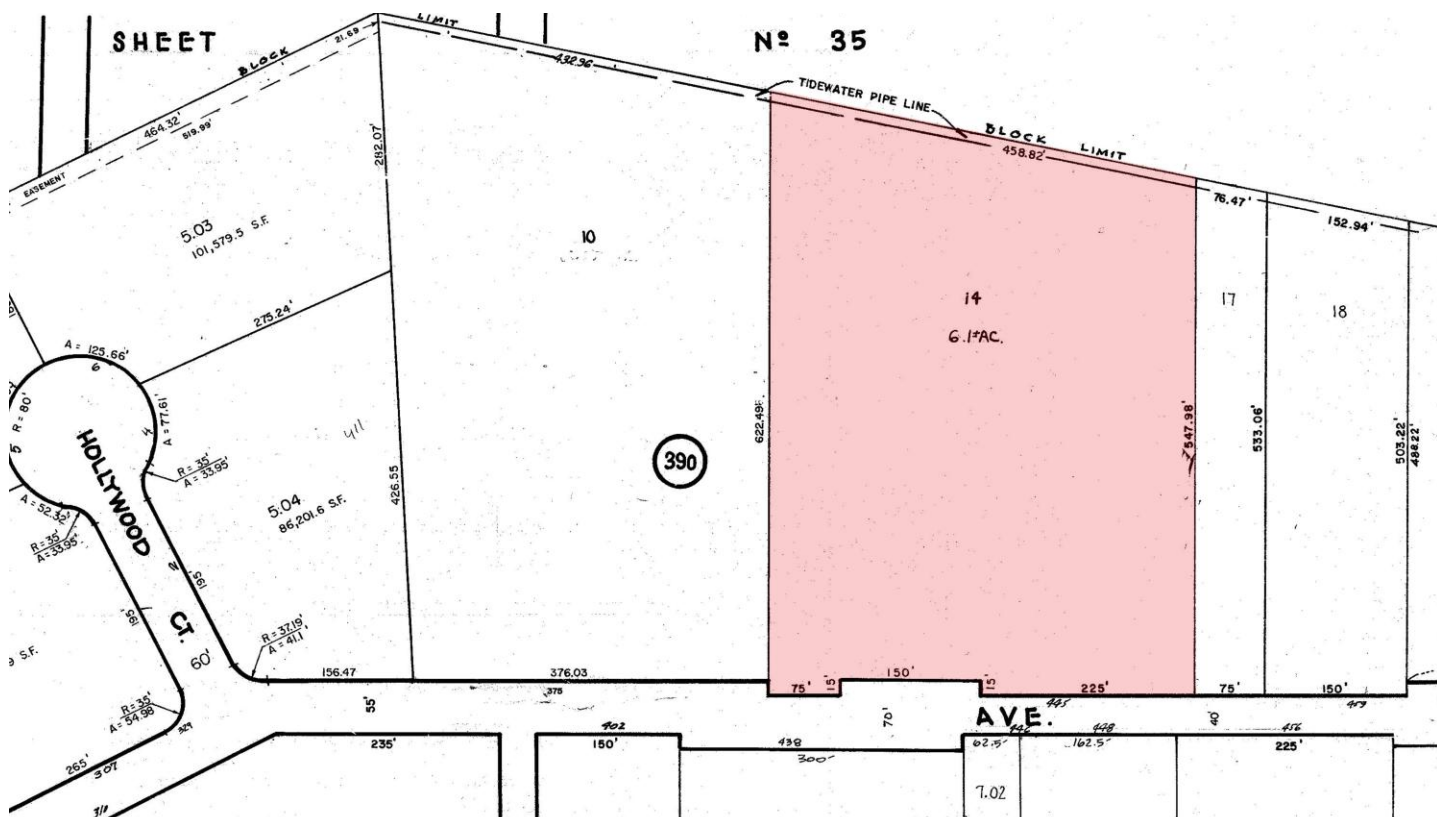
Jason M. Crimmins, CCIM, SIOR, *President*, 973.379.6644 x 122, jmcrimmins@blauberg.com

Kenneth F. Crimmins, CCIM, SIOR, *Chairman & CEO*, 973.379.6644 x 111, kfcrimmins@blauberg.com

Laura L. Crimmins, SIOR, *Executive Director*, 973.379.6644 x 142, lcrimmins@blauberg.com

Alessandro (Alex) Conte, CCIM, SIOR, *Executive Vice President*, 973.379.6644 x 131, aconte@blauberg.com

Peter J. Murano, Jr., *Managing Executive Director*, 973.379.6644 x 114, pjmurano@blauberg.com



For additional property information or to arrange an inspection, please contact the exclusive brokers:

- Jason M. Crimmins, CCIM, SIOR, *President*, 973.379.6644 x 122, jmcrimmins@blauberg.com
- Kenneth F. Crimmins, CCIM, SIOR, *Chairman & CEO*, 973.379.6644 x 111, kfcrimmins@blauberg.com
- Laura L. Crimmins, SIOR, *Executive Director*, 973.379.6644 x 142, lcrimmins@blauberg.com
- Alessandro (Alex) Conte, CCIM, SIOR, *Executive Vice President*, 973.379.6644 x 131, aconte@blauberg.com
- Peter J. Murano, Jr., *Managing Executive Director*, 973.379.6644 x 114, pjmurano@blauberg.com



5 MILES

- Total Population: 361,223
- Households: 119,945
- Median Household Income: \$126,691
- Average Household Size: 2.9
- Transportation to Work: 180,102
- Labor Force: 291,587

10 MILES

- Total Population: 1.12M
- Households: 390,119
- Median Household Income: \$127,569
- Average Household Size: 2.8
- Transportation to Work: 562,578
- Labor Force: 902,242

15 MILES

- Total Population: 2.24M
- Households: 792,792
- Median Household Income: \$128,181
- Average Household Size: 2.8
- Transportation to Work: 1.14M
- Labor Force: 1.81M

For additional property information or to arrange an inspection, please contact the exclusive brokers:

- Jason M. Crimmins, CCIM, SIOR, *President*, 973.379.6644 x 122, jmcrimmins@blauberg.com
- Kenneth F. Crimmins, CCIM, SIOR, *Chairman & CEO*, 973.379.6644 x 111, kfcrimmins@blauberg.com
- Laura L. Crimmins, SIOR, *Executive Director*, 973.379.6644 x 142, lcrimmins@blauberg.com
- Alessandro (Alex) Conte, CCIM, SIOR, *Executive Vice President*, 973.379.6644 x 131, acont@blauberg.com
- Peter J. Murano, Jr., *Managing Executive Director*, 973.379.6644 x 114, pjmurano@blauberg.com

The information contained herein has been obtained from sources considered to be reliable, but no guarantee of its accuracy is made by this company. In addition, no representation is made respecting zoning, condition of title, dimensions, or any matters of a legal or environmental nature. Such matters should be referred to legal counsel for determination. Terms and conditions are subject to change without prior notice. Subject to errors and omissions.



ACCESSIBILITY

	1.2 MI I-287
	4.3 MI Route 28
	4.8 MI Route 1
	6.1 MI I-95 Exit 10
	6.2 MI Route 22
	7.8 MI GSP Exit 130
	21.5 MI Goethals Bridge
	23.3 MI Ports Newark & Elizabeth
	23.9 MI Newark Airport

For additional property information or to arrange an inspection, please contact the exclusive brokers:

- Jason M. Crimmins, CCIM, SIOR, *President*, 973.379.6644 x 122, jmcrimmins@blauberg.com
- Kenneth F. Crimmins, CCIM, SIOR, *Chairman & CEO*, 973.379.6644 x 111, kfcrimmins@blauberg.com
- Laura L. Crimmins, SIOR, *Executive Director*, 973.379.6644 x 142, lcrimmins@blauberg.com
- Alessandro (Alex) Conte, CCIM, SIOR, *Executive Vice President*, 973.379.6644 x 131, acont@blauberg.com
- Peter J. Murano, Jr., *Managing Executive Director*, 973.379.6644 x 114, pjmurano@blauberg.com

The information contained herein has been obtained from sources considered to be reliable, but no guarantee of its accuracy is made by this company. In addition, no representation is made respecting zoning, condition of title, dimensions, or any matters of a legal or environmental nature. Such matters should be referred to legal counsel for determination. Terms and conditions are subject to change without prior notice. Subject to errors and omissions.