

Borough Hall ANNEX & Carriage House

600 S. Broad St., Kennett Square, PA 19348



KARMAR REALTY GROUP, INC.
COMMERCIAL & INVESTMENT REAL ESTATE SERVICES

NAI Emory Hill
Commercial Real Estate Services, Worldwide.



LOCATION SUMMARY

Kennett Square is a charming borough in Chester County, Pennsylvania. It is known as the Mushroom Capital of the World because mushroom farming in the region produces over a million pounds of mushrooms a day.

Pennsylvania Route 82 is the only numbered highway directly serving the borough. It follows a southeast-to-northwest alignment through the central portion of the borough via South Street and Union Street. U.S. Route 1 bypasses the borough to the north.

As of the 2020 U.S. census, Kennett Square had a population of 5,943. Kennett Square is located in the Delaware Valley and considered a suburb of both Philadelphia, the nation's sixth largest city as of 2020, and Wilmington, Delaware.

AVAILABLE SPACES

MAIN BUILDING

First Floor

A	+/- 6,790 RSF
B	+/- 294 RSF
C	+/- 345 RSF
D	+/- 2,915 RSF
E	+/- 551 RSF

Second Floor

F	+/- 6,853 RSF
---	---------------

TOTAL +/- 17,748 RSF

ANNEX

Lower	+/- 4,666 RSF
Upper	+/- 3,185 RSF
Basement	+/- 253 RSF

TOTAL +/- 8,104 RSF

CARRIAGE HOUSE

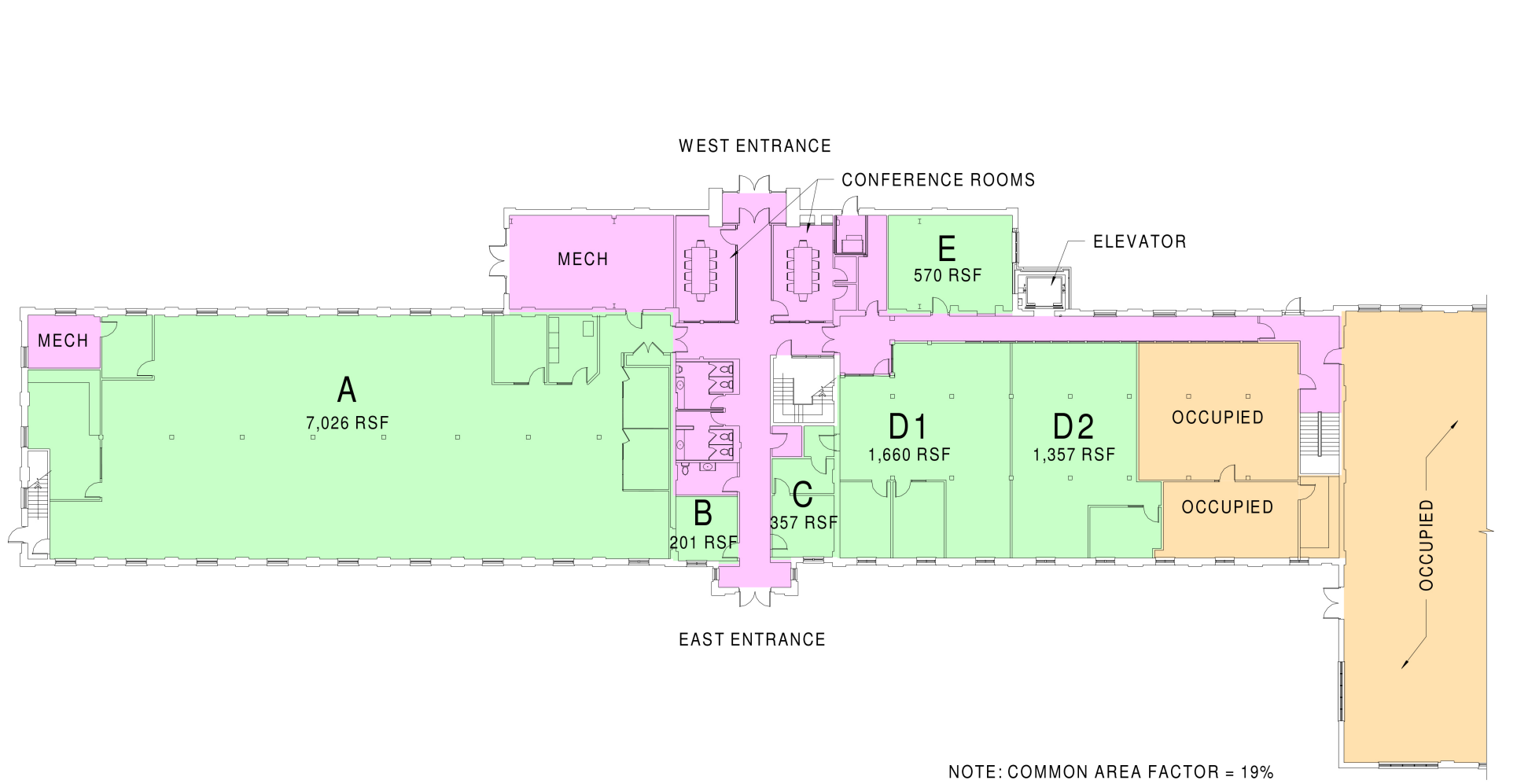
First Floor	+/- 2,566 RSF
Loft	+/- 1,884 RSF

TOTAL +/- 4,450 RSF

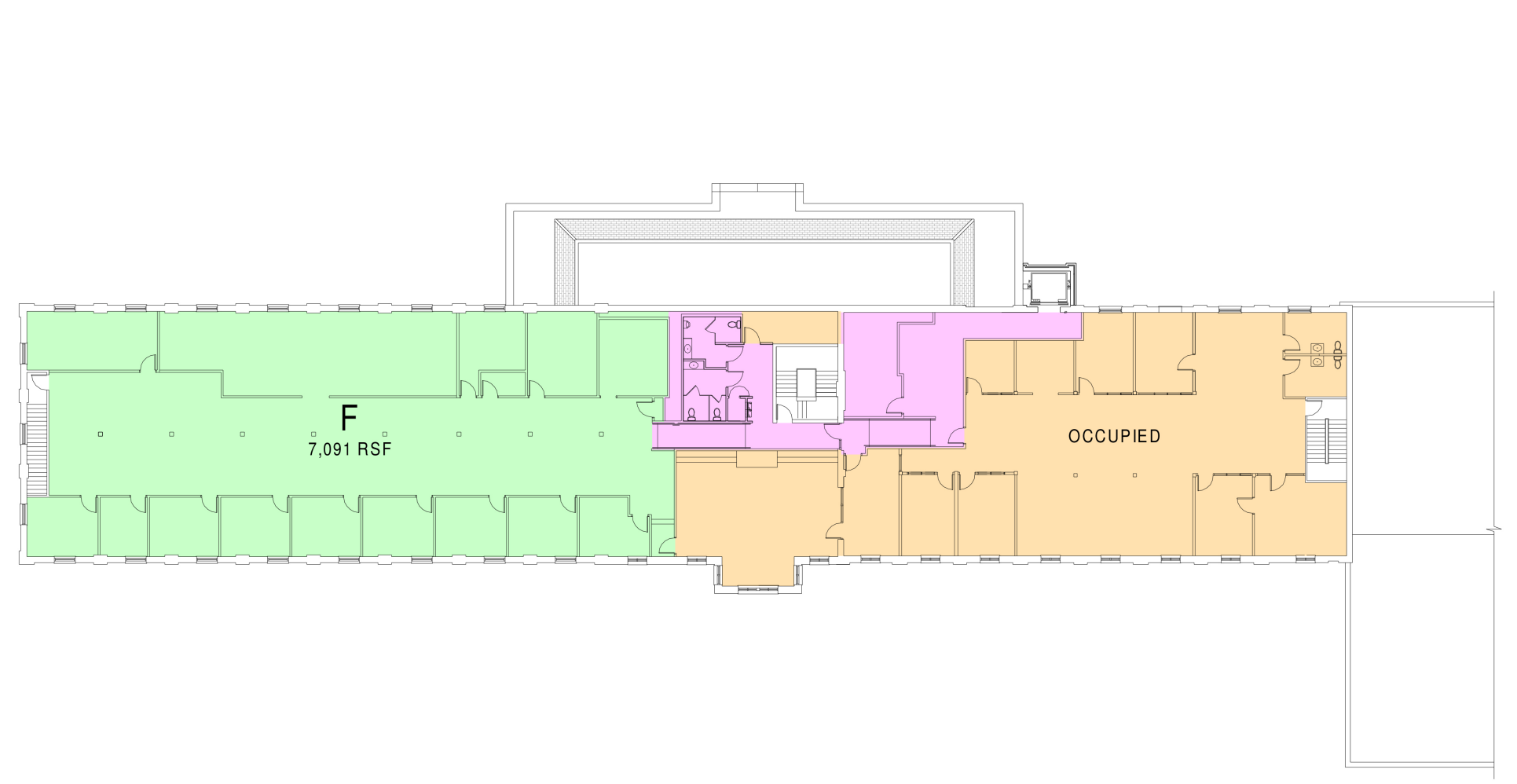


Annex

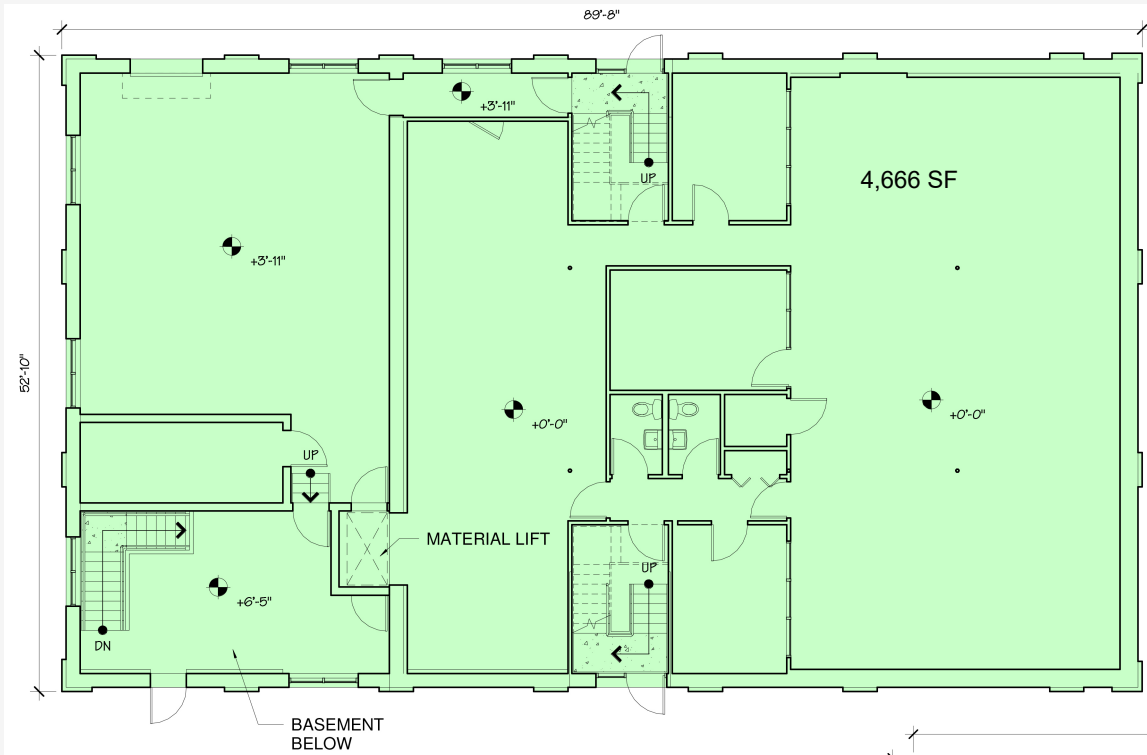
MAIN BUILDING ~ First Floor Plan



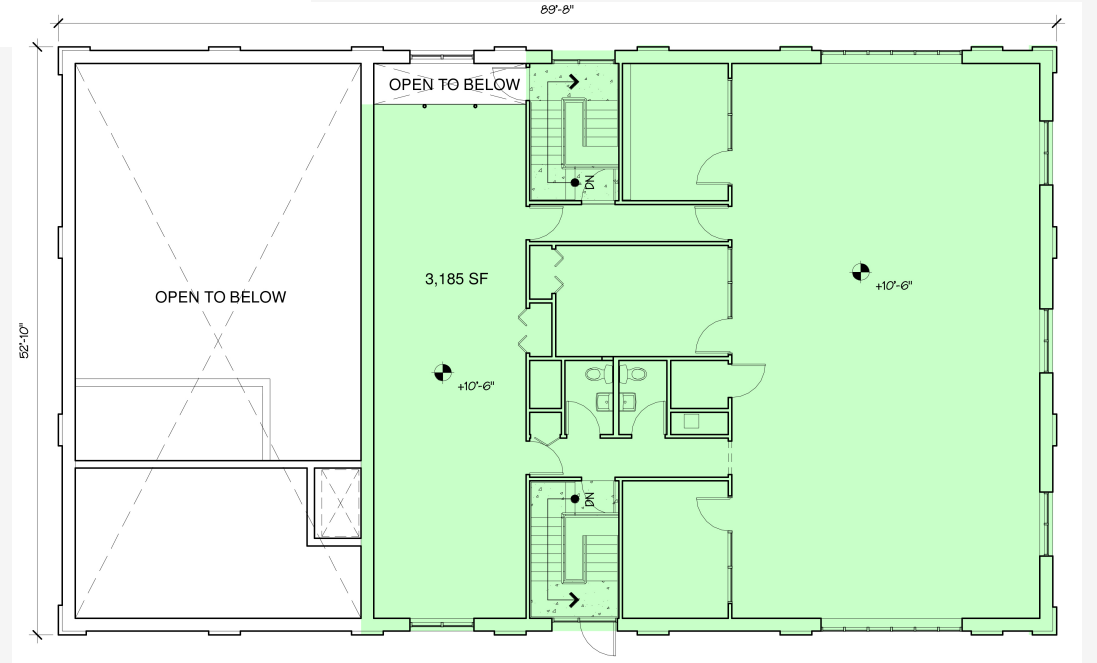
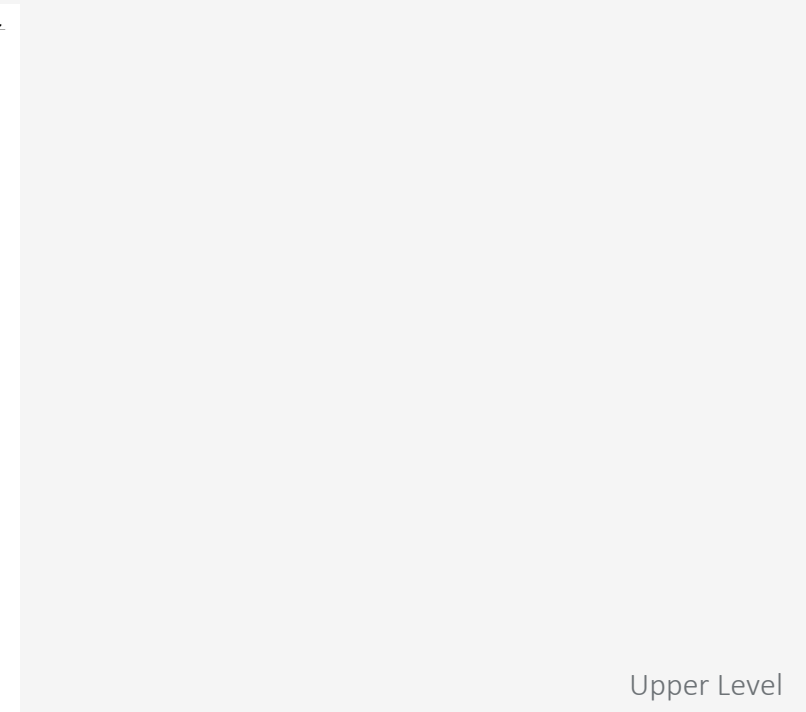
MAIN BUILDING ~ Second Floor Plan



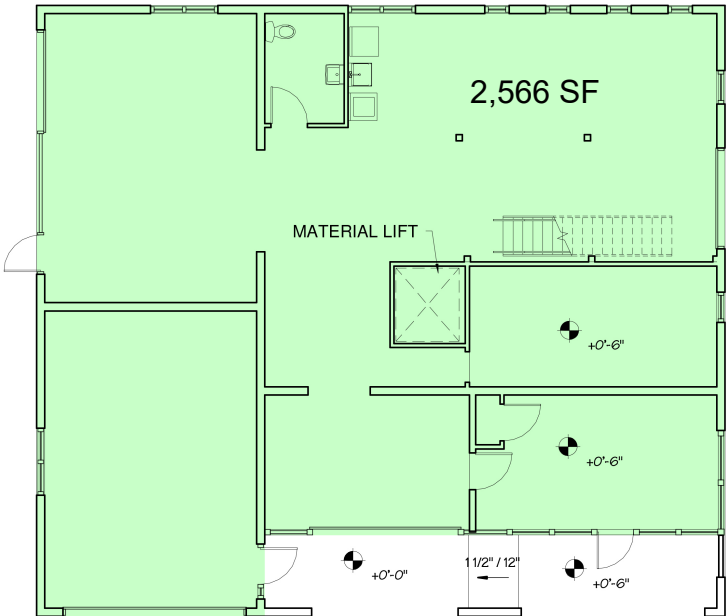
ANNEX



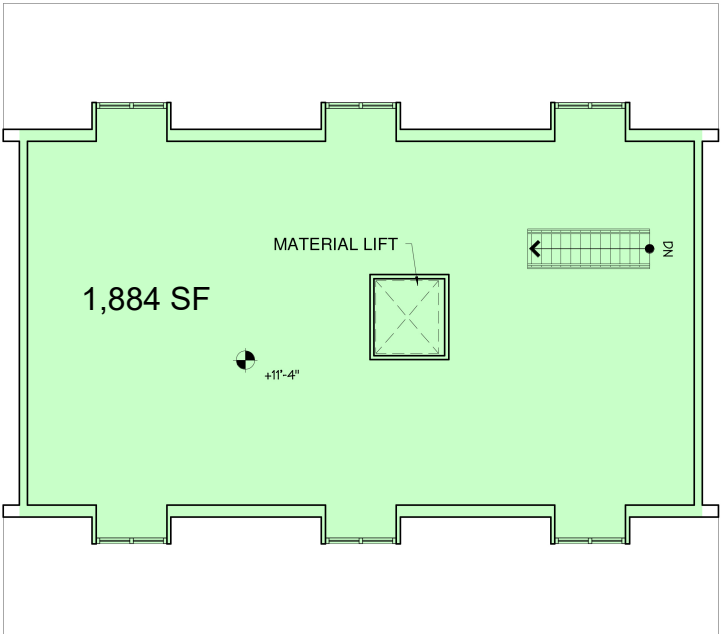
Lower Level



CARRIAGE HOUSE

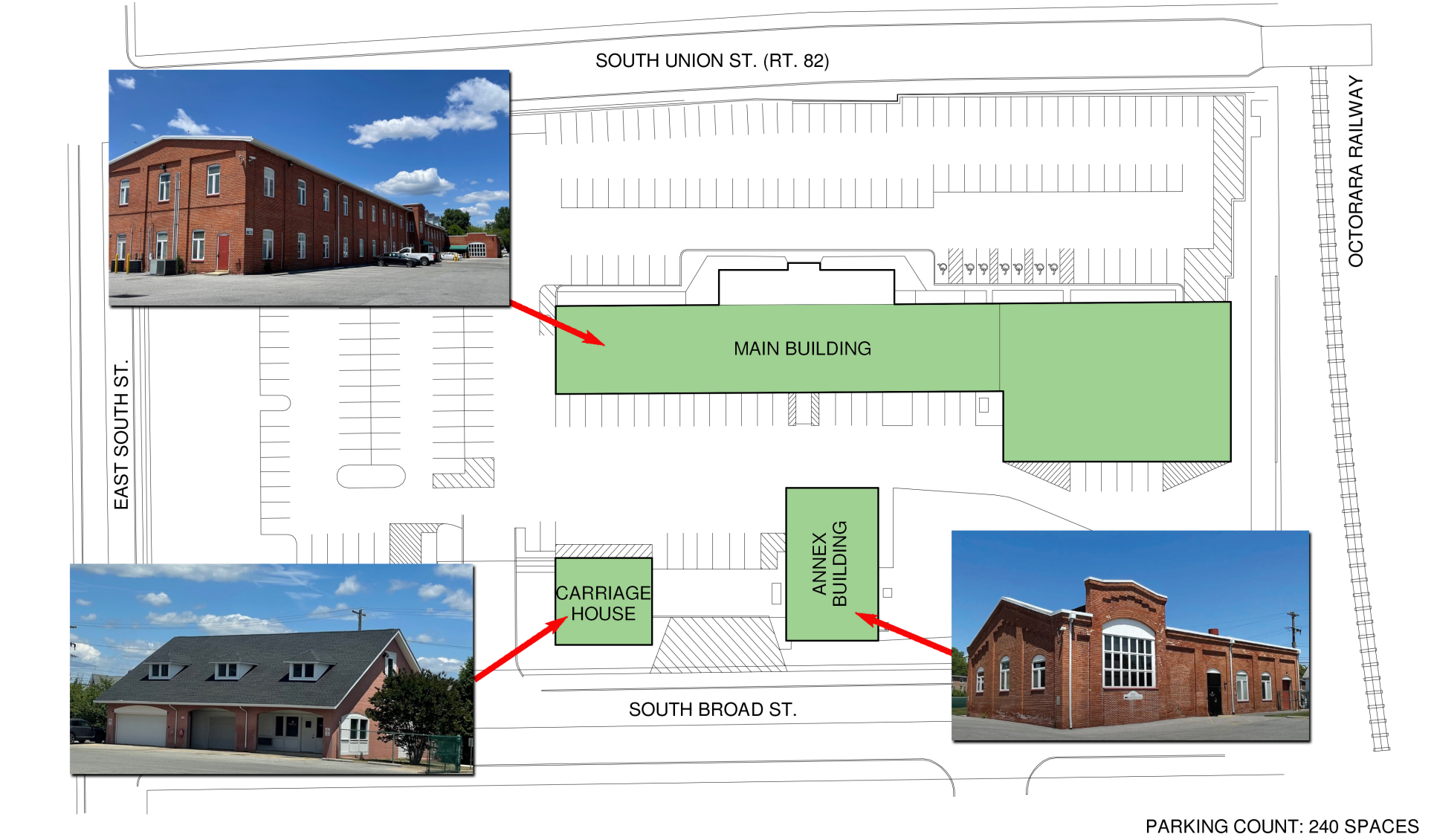


FIRST FLOOR PLAN

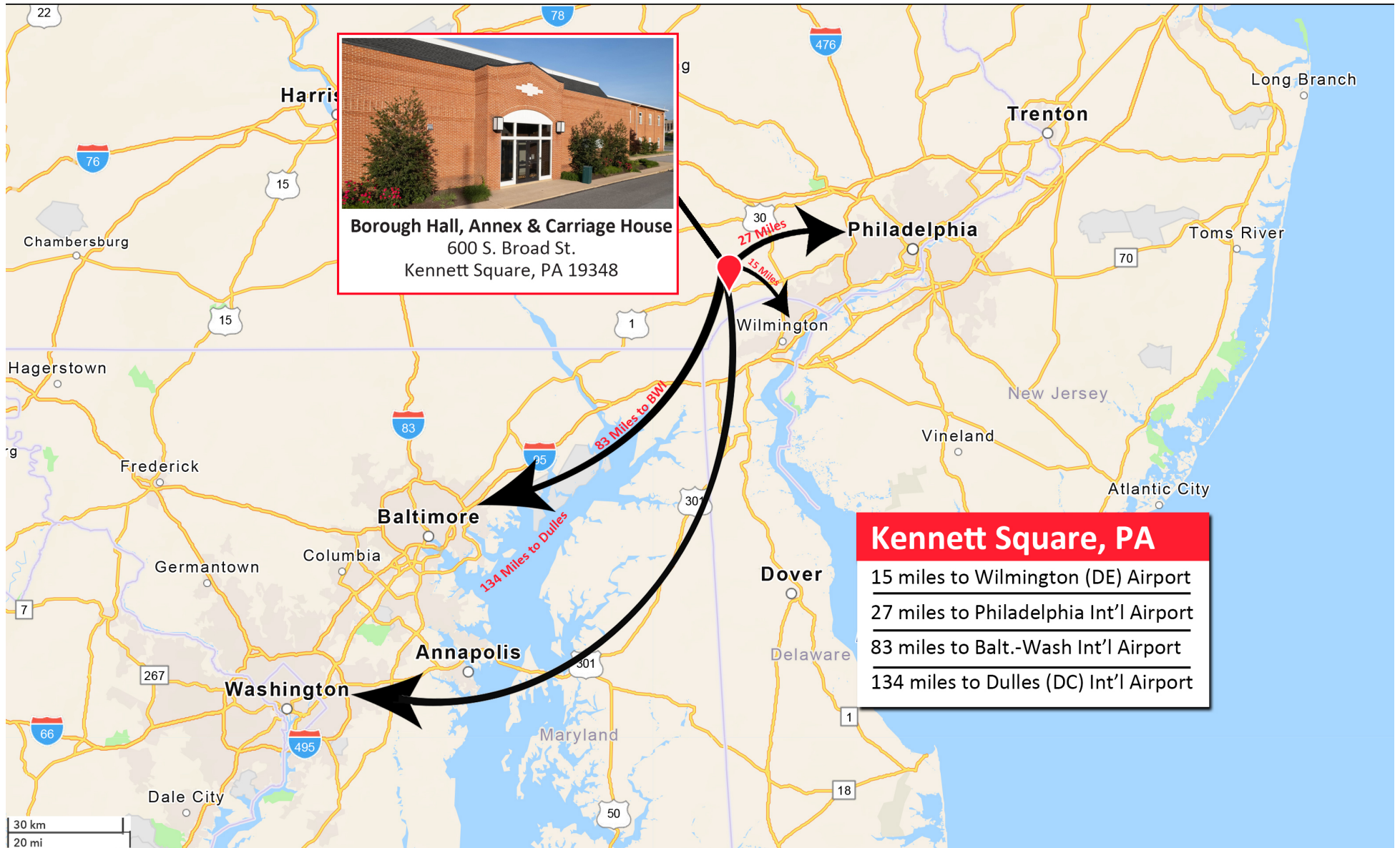


LOFT PLAN

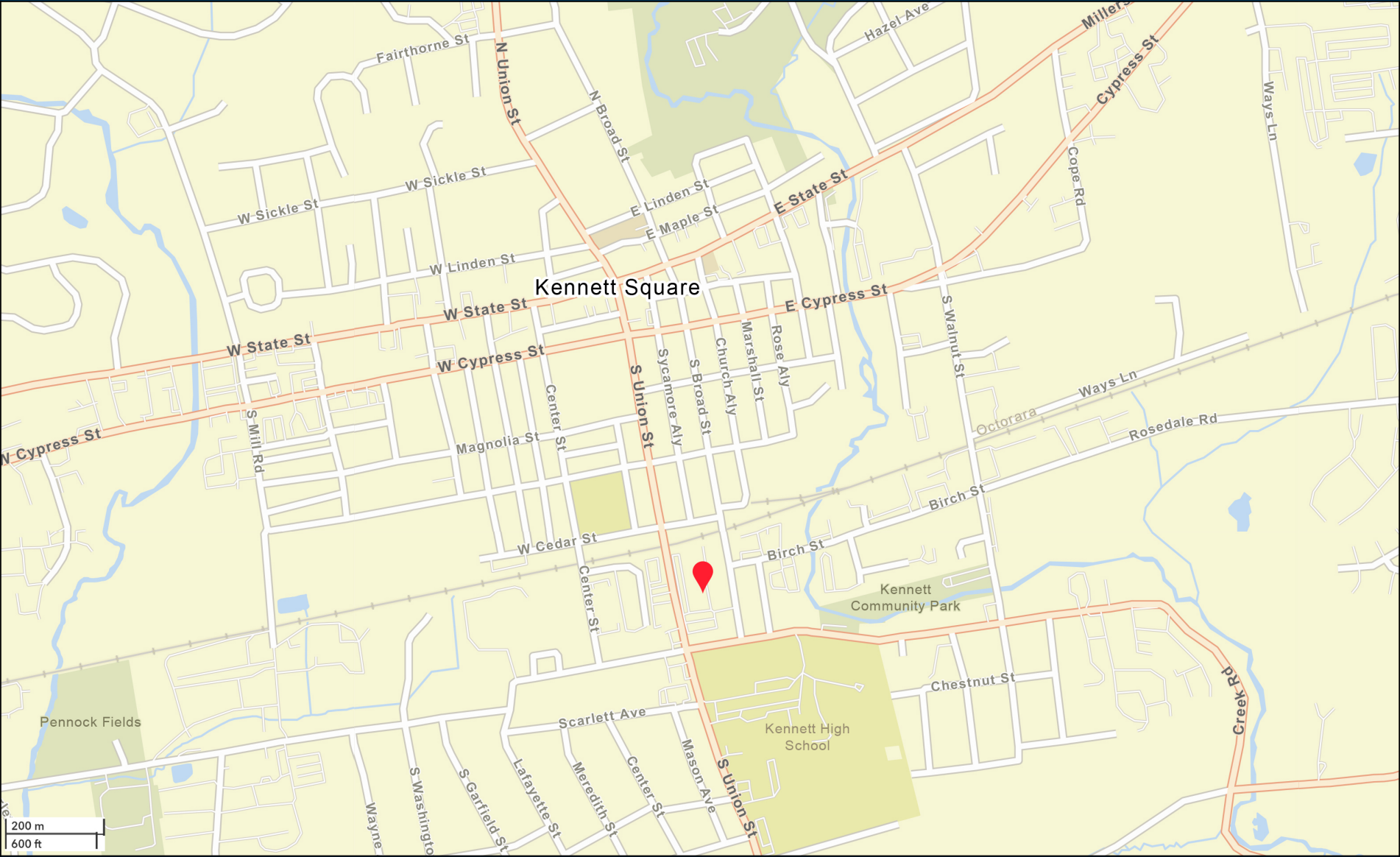
SITE PLAN



REGIONAL MAP



LOCAL MAP



PROPERTY PHOTOS



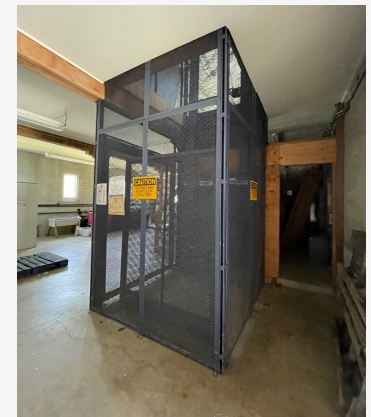
Main Building



Carriage House



PROPERTY PHOTOS



NAI Emory Hill

Commercial Real Estate Services, Worldwide.

M. NEIL KILIAN
Partner

Phone: +1 302 322 9500
Mobile: +1 302 521 7291
neilkilian@emoryhill.com

KARMAR REALTY GROUP, INC.

COMMERCIAL & INVESTMENT REAL ESTATE SERVICES

JUSTIN M. SOSS
President & COO

Phone: +1 610 459 8585
Mobile: +1 610 256 0368
jsoss@karmarrealty.com

NO WARRANTY OR REPRESENTATION, EXPRESS OR IMPLIED, IS MADE AS TO THE ACCURACY OF THE INFORMATION CONTAINED HEREIN, AND THE SAME IS SUBMITTED SUBJECT TO ERRORS, OMISSIONS, CHANGE OF PRICE, RENTAL OR OTHER CONDITIONS, PRIOR SALE, LEASE OR FINANCING, OR WITHDRAWAL WITHOUT NOTICE, AND OF ANY SPECIAL LISTING CONDITIONS IMPOSED BY OUR PRINCIPALS NO WARRANTIES OR REPRESENTATIONS ARE MADE AS TO THE CONDITION OF THE PROPERTY OR ANY HAZARDS CONTAINED THEREIN ARE ANY TO BE IMPLIED.