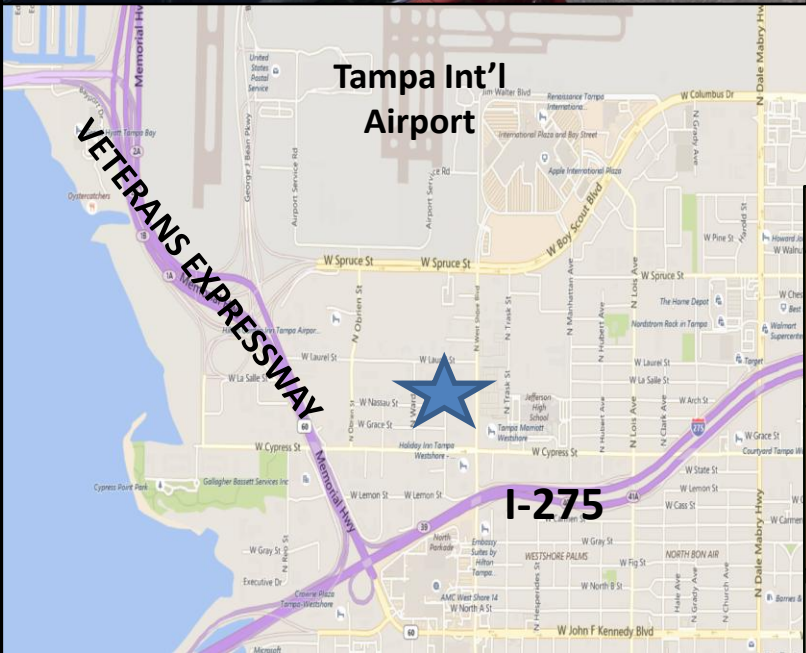


# WESTSHORE OFFICE SPACE

1300 N. Westshore Boulevard  
Tampa, FL 33607

**\$31.50 Full Service**  
**4,959 SF Available**  
**1,847 SF Available**



**Ray Ploucher, CCIM**      **Licensed Real Estate Broker**

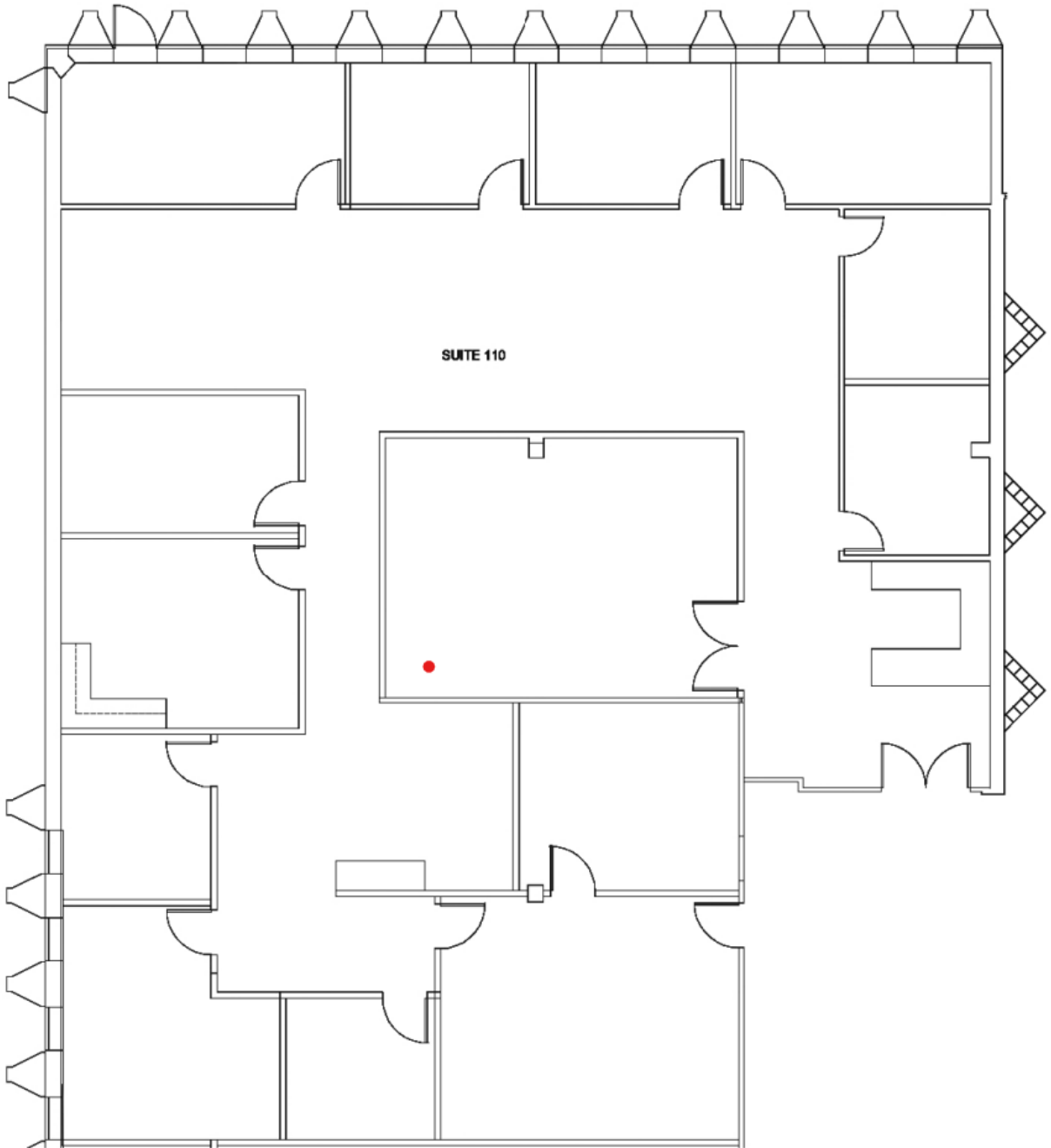
REAL ESTATE ADVISORY CORP. – TAMPA

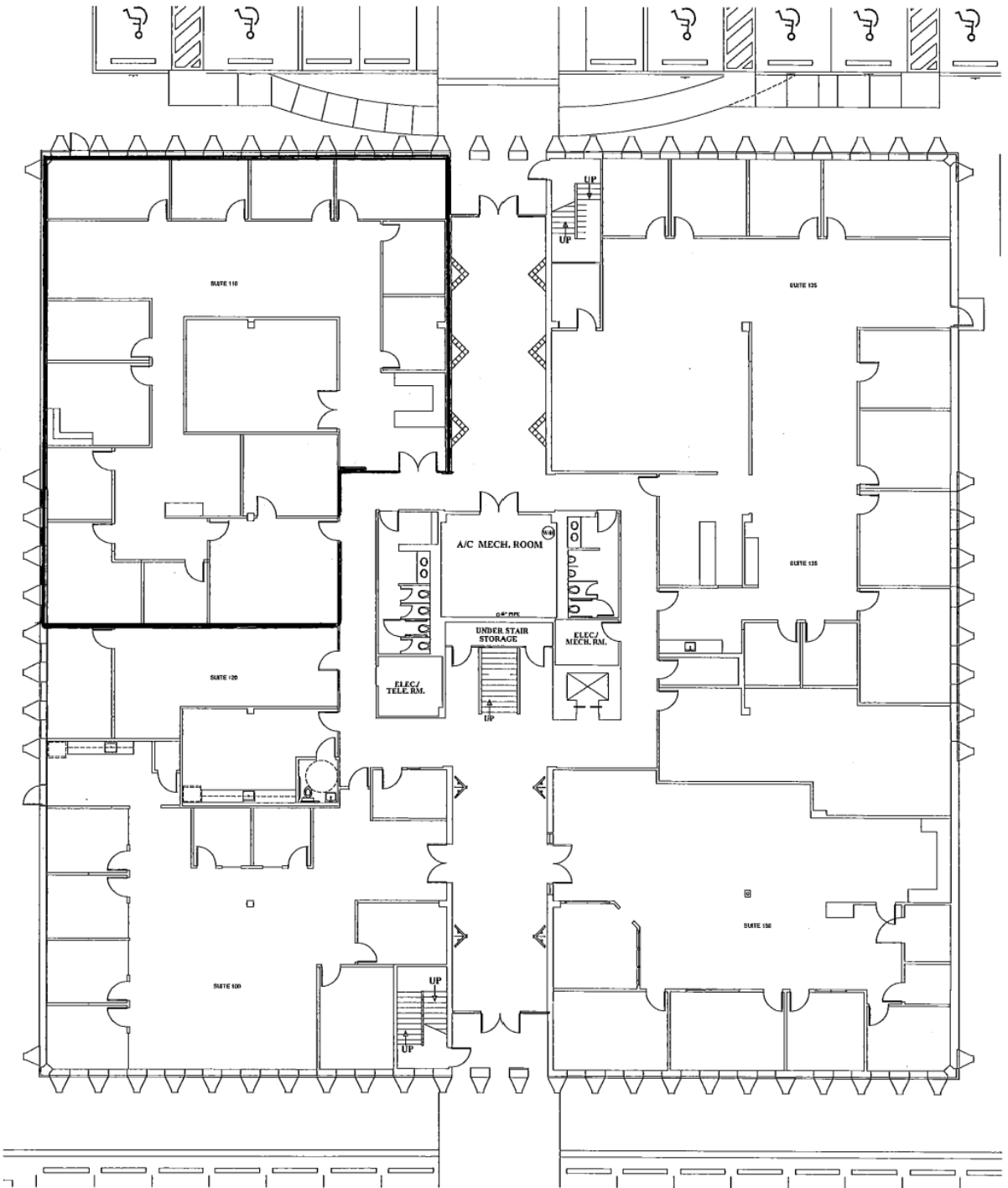
813-637-8888 Office; 813-774-1788 Mobile:

[rayploucher@reactampa.com](mailto:rayploucher@reactampa.com)

Note: Every effort has been made to provide accurate information, however Real Estate Advisory Corp. –Tampa makes no representations, guarantees, or warranties of any kind, expressed or implied regarding the information contained herein.

SUITE 110  
4,959 SF





## First Floor - 1300 Westshore

1907 E. 7th Avenue  
 Tampa, Florida 33605  
 Ph: 813.247.3332  
 Web: www.aicoll.com

Existing Floor Plan  
 1300 N Westshore Blvd

I:\Westshore\1300\24477 Asbuilts and Restrooms\Schematics\1/8" = 1'-0"

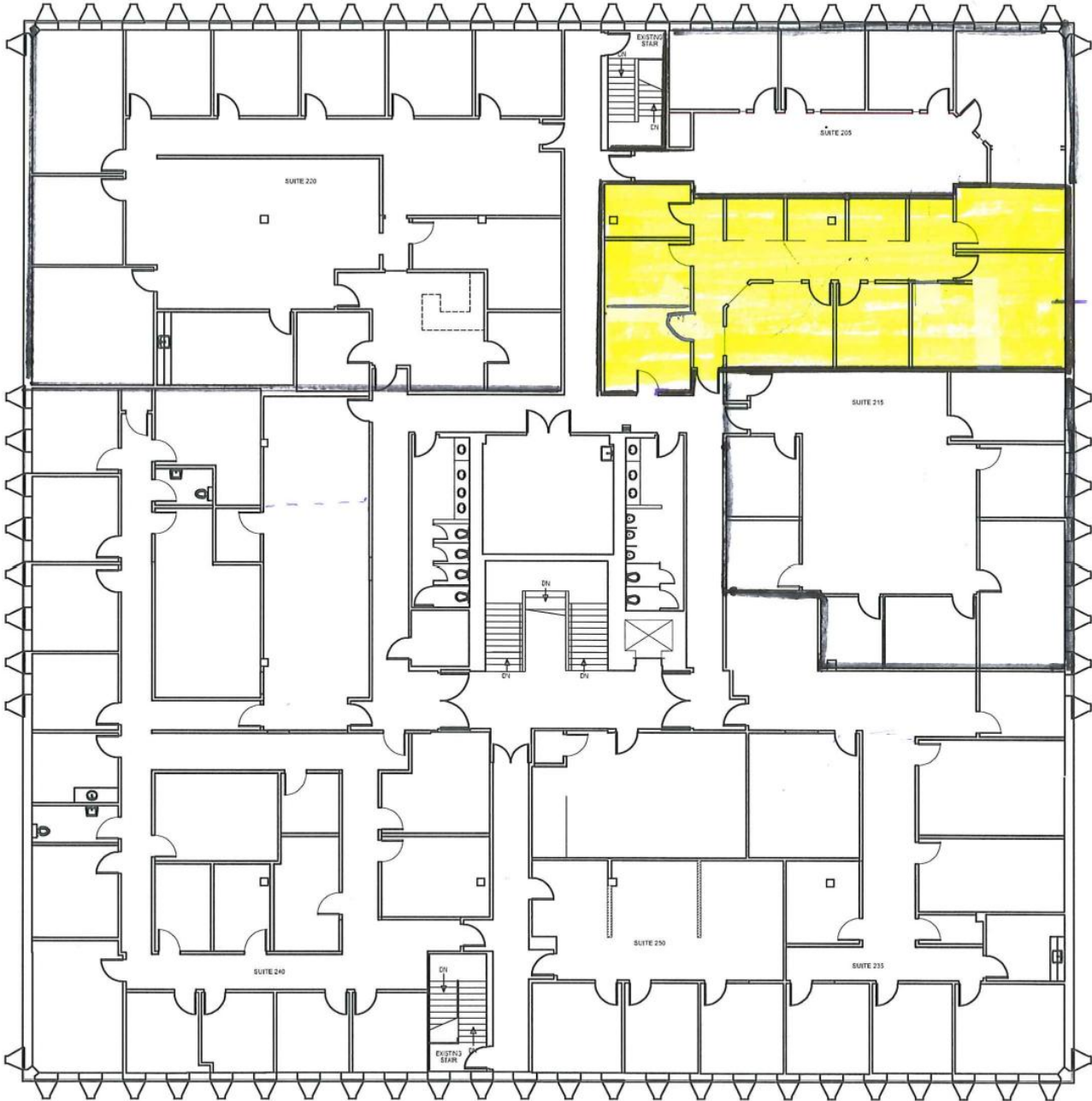
1 of 1

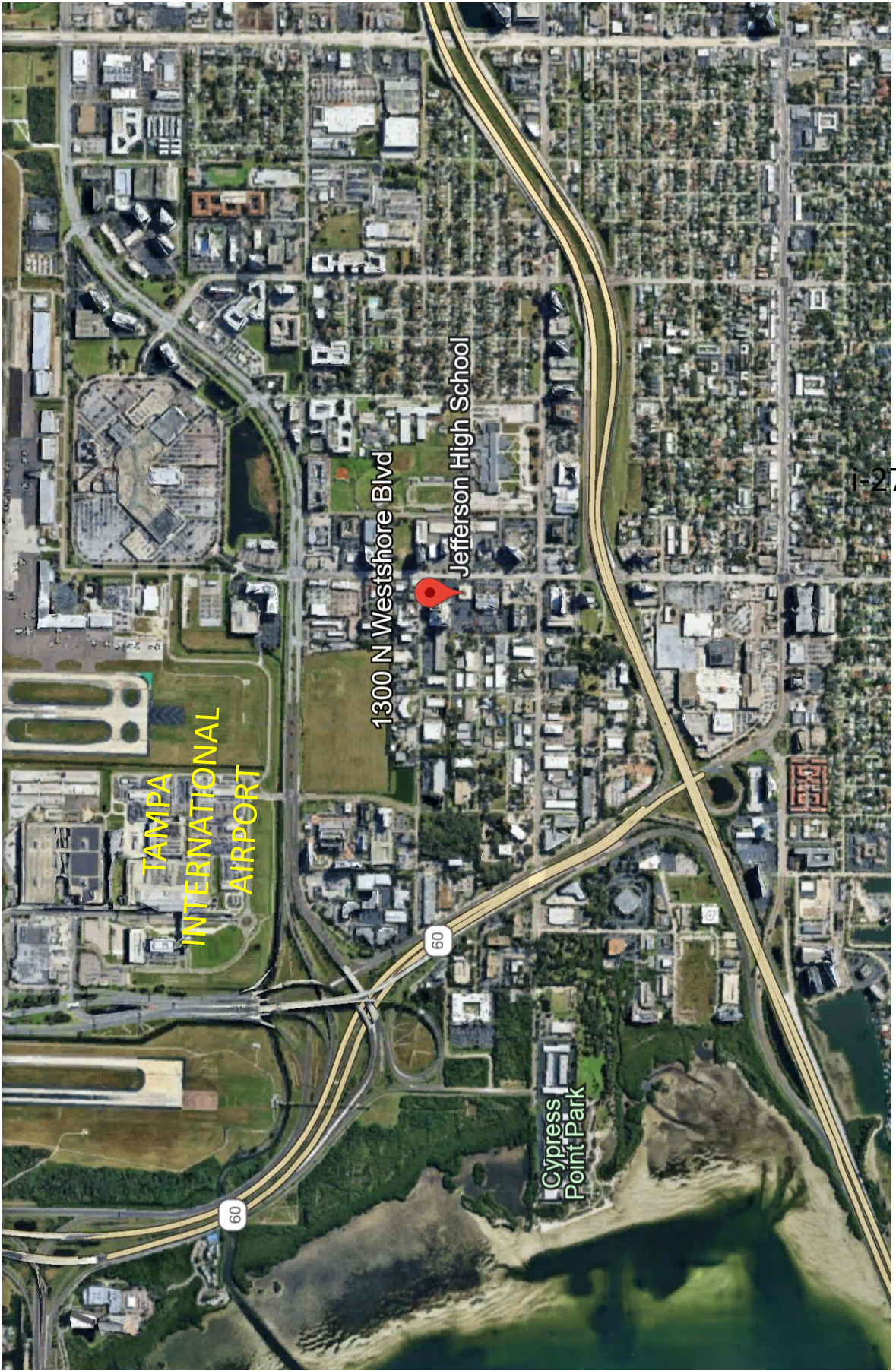


12.19.2024

A 1R

SUITE 215 - 1847 sf





# NEW PYLON SIGN

