

124-130

MASON STREET

Greenwich, Connecticut

---

*Boutique Buildings  
Available for Lease  
in Greenwich*

---

NEWMARK





# IN THE HEART OF CENTRAL GREENWICH

- > Surrounded by retailers and restaurants that include Saks Fifth Avenue, Hoaglands, Something Natural, Doppio, Le Penguin, and Chase Bank, to name just a few
- > Garage parking at a ratio of 3/1,000 with elevator access to the office lobbies – approximately 7 spaces for each of the eight 2,150 RSF (+/-) office pods. The property is also surrounded by surface lot municipal parking
- > Charming New England style exterior architecture with a beautifully landscaped central plaza. The interior features brand new common area entrance lobbies and bathrooms.
- > The office suites feature fabulous ceiling heights throughout. Suites are either pre-built or construction ready and can be custom built for tenant needs.
- > The building was originally constructed in 1988 and has been renovated on multiple occasions over the years
- > CGB-HO zoning permits office, medical office, and retail uses
- > Storage – Over 2,000 SF of finished attic area storage space available

## SPECIFICATIONS

Size:	Two remaining units of approximately 2,000 SF each.
Available:	Immediate
Rent:	\$90 / RSF + electric

## BROKER CONTACT

Allan Murphy  
203-912-1650 | allan.murphy@nmrk.com

Janey Steinmetz  
203-531-3601 | janey.steinmetz@nmrk.com



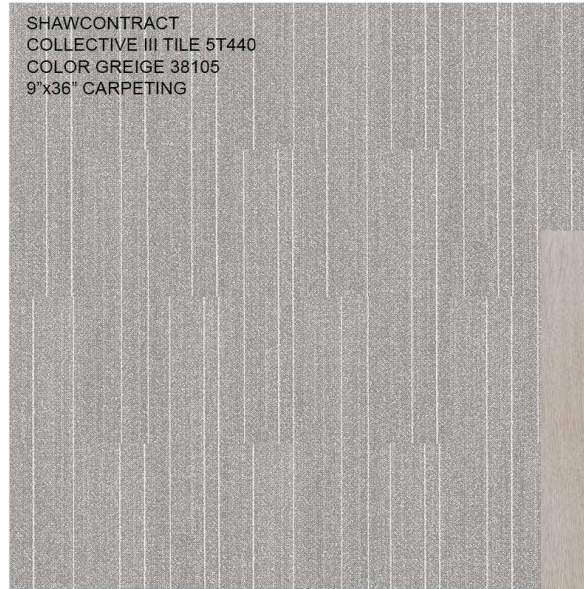
# RENOVATION FINISHES

124-130 MASON STREET, GREENWICH, CT

## PRE-BUILD PALETTE



SHAWCONTRACT  
COLLECTIVE III TILE 5T440  
COLOR GREIGE 38105  
9"x36" CARPETING



WOLF GORDON  
HEERINGBONE  
GALLANT WHITE  
OR SIMILAR  
CONFERENCE ROOM  
ACCENT WALL

WILSONART  
CALACATTAQUILEA Q4056  
PANTRY COUNTERTOP



MOHAWK GROUP  
LIVING LOCAL CO194  
210 FAWN  
8"x52" LVT. PANTRY



FORMICA  
MATTE TEXTURE  
GREYSTONE 464-58  
PANTRY CABINETS

BENJAMIN MOORE  
EGGSHELL  
BALBOAS MIST OC-27  
GENERRAL PAINT



GLASS PARTITION  
SAMPLE

# LOBBY RENOVATION FINISHES

124-130 MASON STREET, GREENWICH, CT



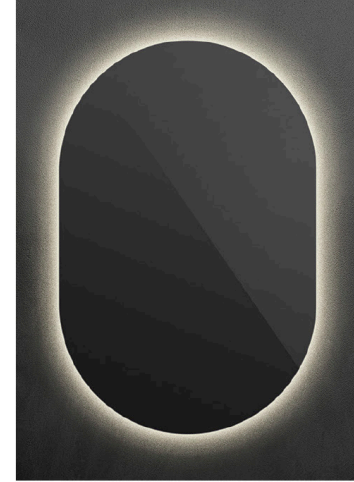
# LOBBY RENOVATION FINISHES

124-130 MASON STREET, GREENWICH, CT



# RENOVATION FINISHES

124-130 MASON STREET, GREENWICH, CT

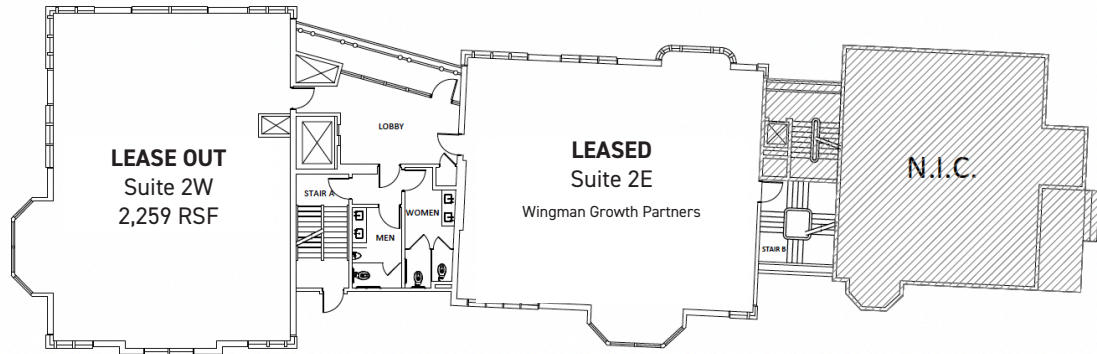


# GREENWICH AVENUE AERIAL

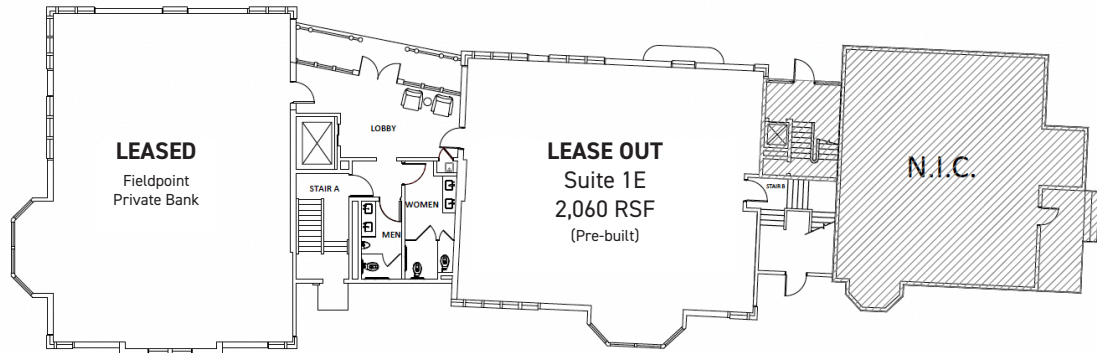


# FLOOR PLANS - 130 MASON

124-130 MASON STREET, GREENWICH, CT



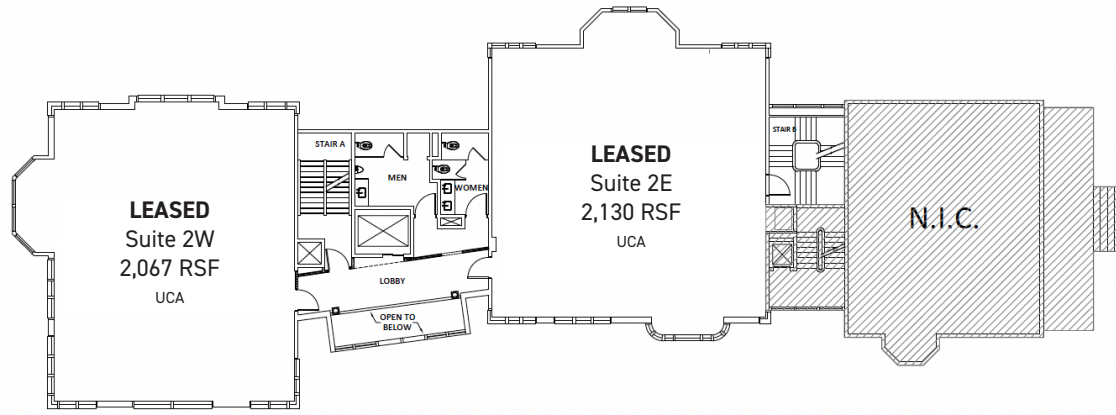
**2** SECOND FLOOR PLAN  
SCALE: 1/16" = 1'-0"



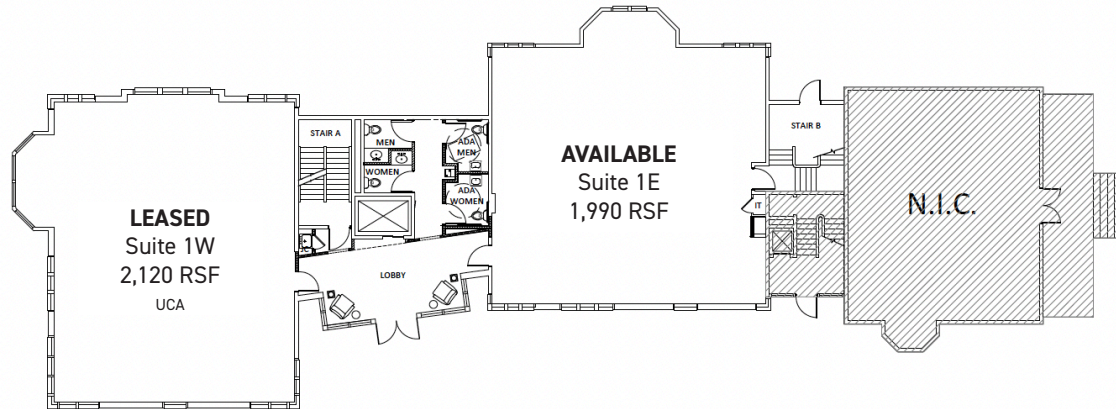
**1** GROUND FLOOR PLAN  
SCALE: 1/16" = 1'-0"

# FLOOR PLANS - 124 MASON

124-130 MASON STREET, GREENWICH, CT



**2** SECOND FLOOR PLAN  
SCALE: 1/16" = 1'-0"

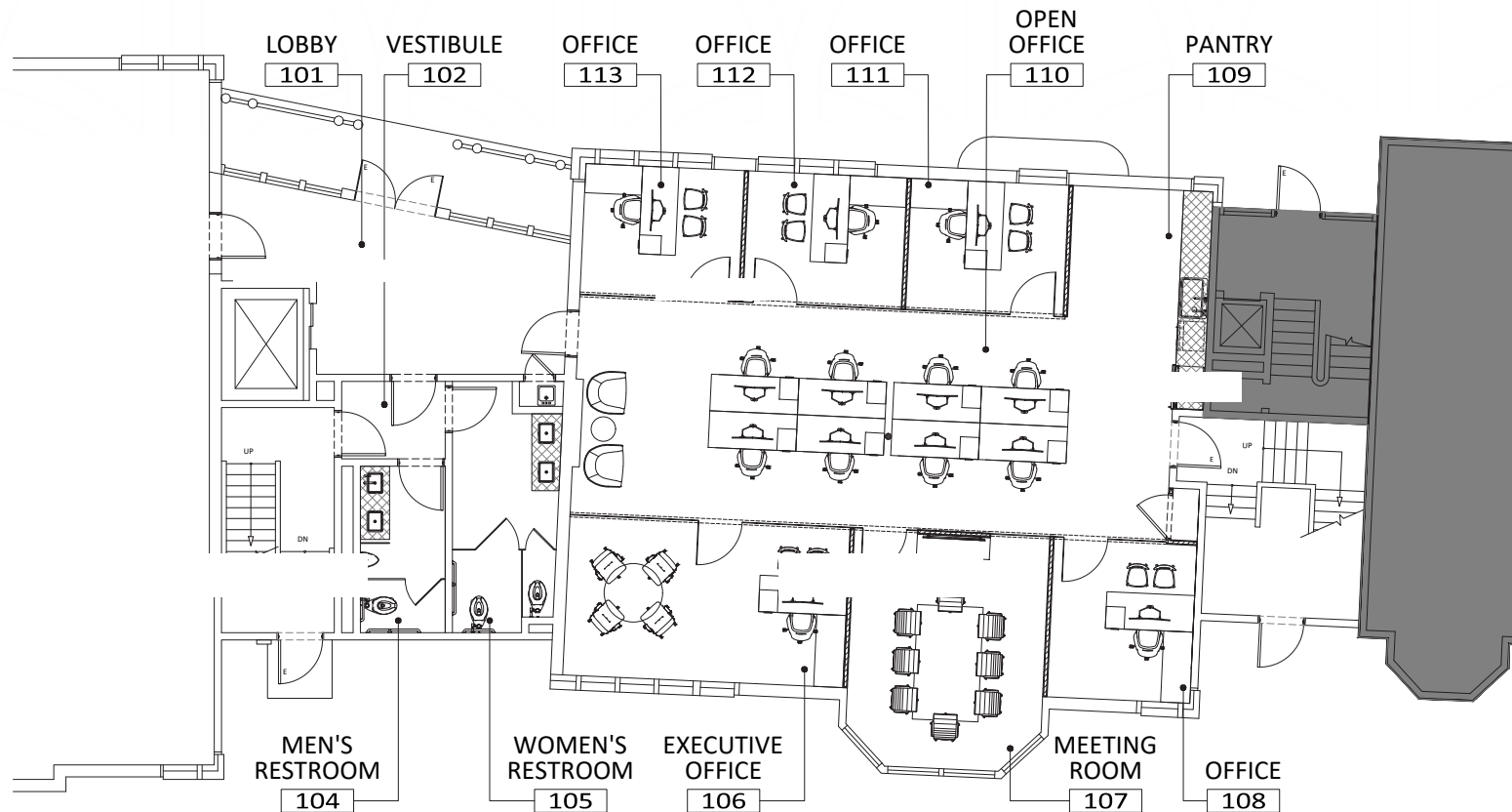


**1** GROUND FLOOR PLAN  
SCALE: 1/16" = 1'-0"

# FLOOR PLAN - 130/1E

124-130 MASON STREET, GREENWICH, CT

130 MASON STREET / PRE-BUILT SPACE / 1E (LEASE OUT)



# FLOOR PLAN - 124/1E

124-130 MASON STREET, GREENWICH, CT

## 124 MASON STREET / PRE-BUILT PLAN

