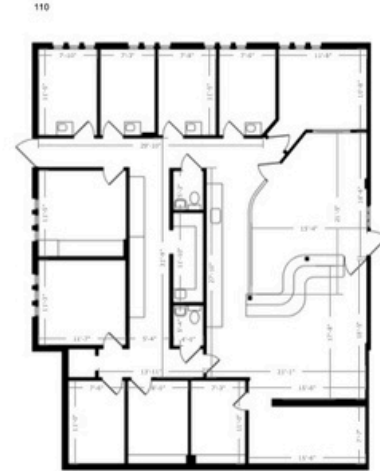


FOR LEASE

10320 N 56th St. Suite 110
Temple Terrace, FL 33617



DISCLAIMER: THIS FLOORPLAN IS PROVIDED WITHOUT WARRANTY OF ANY KIND. FLOOR PLAN NOW DISCLAIMS ANY WARRANTY INCLUDING, WITHOUT LIMITATION, SATISFACTORY OR ACCURACY OF DIMENSIONS. WE RESERVE THE RIGHT TO USE ALL FLOOR PLANS AND REPRESENTATIONS FOR MARKETING PURPOSES.

About Property

This 2,698 rentable square foot medical office suite offers a functional layout tailored for healthcare providers. The suite features a welcoming check-in area and a large administrative space behind the reception counter. The suite has six plumbed exam rooms, two restrooms, a former x-ray room with a control area, and a dedicated procedure room. There is also a private office, an area for the laboratory functions and ample storage space throughout. Located on the first floor with direct access, the suite is adjacent to another medical practice, creating a professional and synergistic environment. The building offers a 4.31/1,000 parking ratio and convenient ingress/egress to 56th Street and Serena Drive, ensuring ease of access for staff and patients. With its thoughtfully designed layout and prime location, this suite is ideal for medical practices seeking a move-in-ready space.



Brad Meinck
(727) 366-2606



ASSET AND KEY
RESIDENTIAL - COMMERCIAL - PROPERTY MANAGEMENT



Andrea Polizzi
(727)387-9530