

# RealStrategy

realstrategy.com

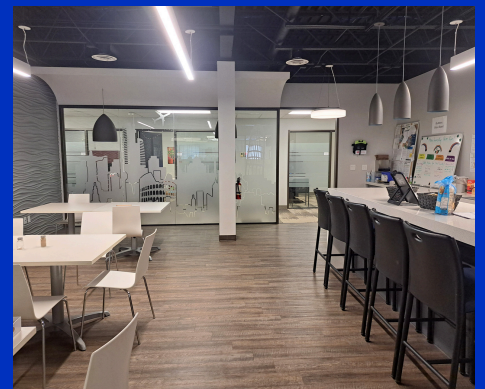


# For Sublease

**1682 Woodward Dr., Ottawa,  
ON, Canada K2C 3R8**

## About Property

Turnkey office sublease opportunity at 1682 Woodward Drive offering approximately 11,666 SF of well-appointed space. The layout includes a mix of private offices, open workspace, boardrooms, and a modern kitchen/lounge area. Ideal for teams seeking a functional, move-in-ready environment in Ottawa's central-west area.



**Basic Rent:** Negotiable

**Additional Rent:** \$12.87

**Expiry:** September 30, 2033

**11,666 SF**

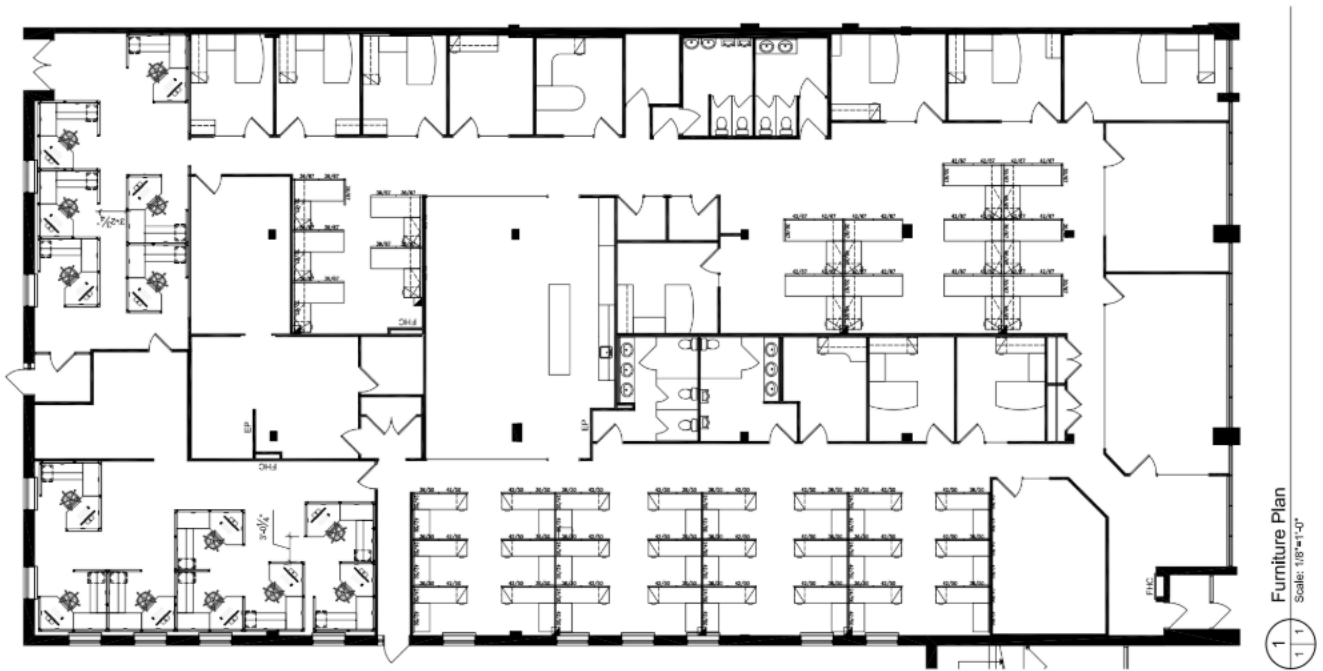
**Jared Jenicek**  
Senior Real Estate Advisor, Broker  
613.216.0130 ext. 106  
jjenicek@realstrategy.com



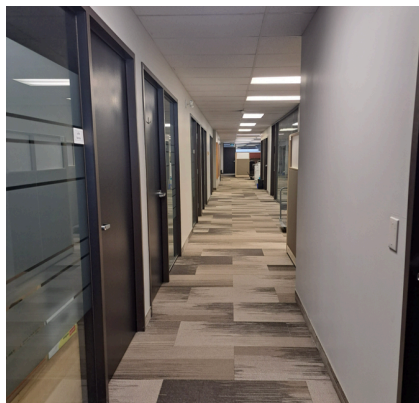
**Naomi Carkner**  
Broker  
613.216.0130 ext 109  
ncarkner@realstrategy.com

## 1682 Woodward Drive

### Floorplan



### Interior



**Jared Jenicek**  
Senior Real Estate Advisor, Broker  
613.216.0130 ext. 106  
jjenicek@realstrategy.com

**Naomi Carkner**  
Broker  
613.216.0130 ext 109  
ncarkner@realstrategy.com



realstrategy.com

360 Albert Street, Suite 1210

Ottawa, ON K1K

Real Strategy Advisors Ltd., Brokerage