

# ENTERPRISE PARK

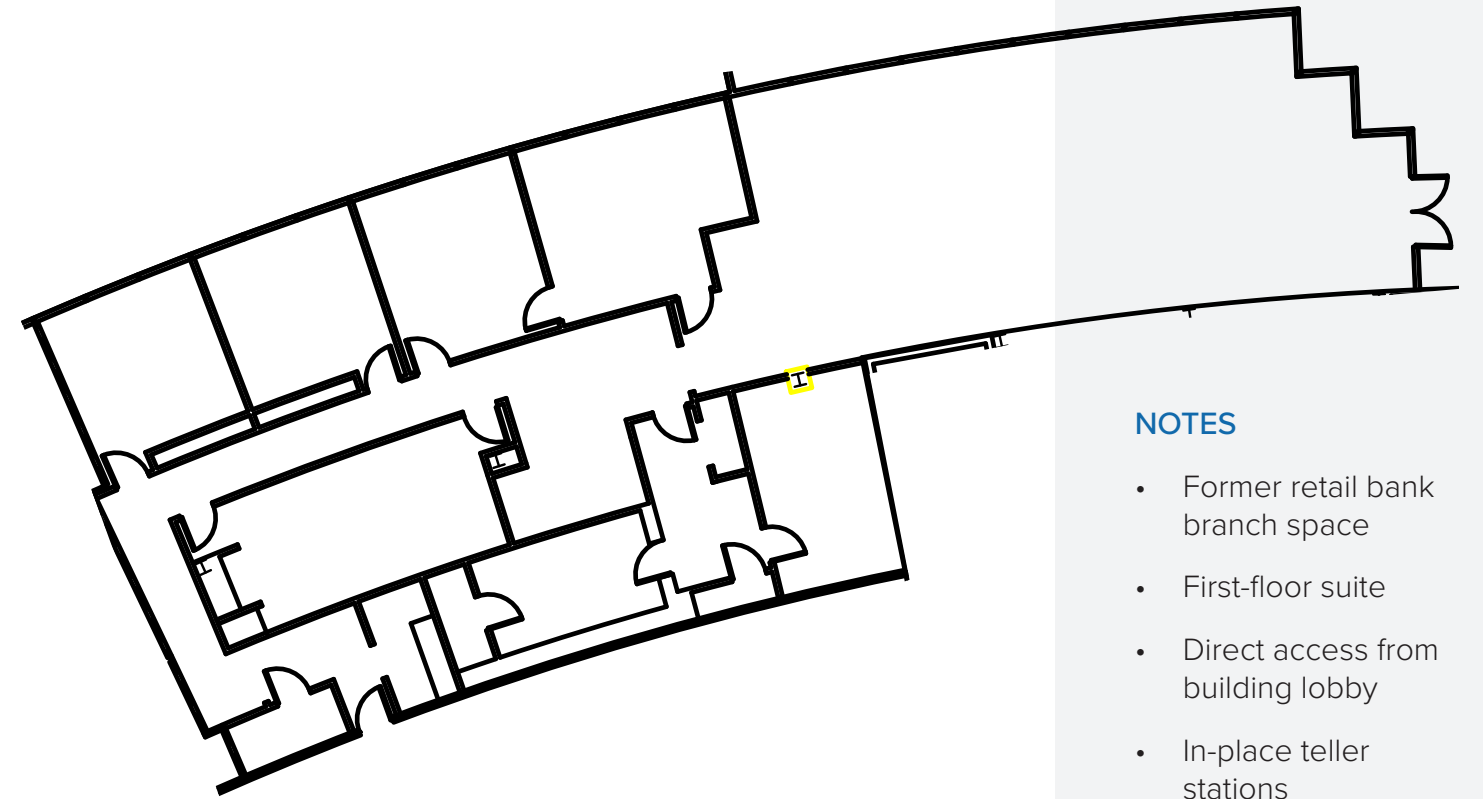
4,526-SF

Former Retail Bank Branch  
with Drive-up ATM Capabilities

4190 Belfort Road, Jacksonville

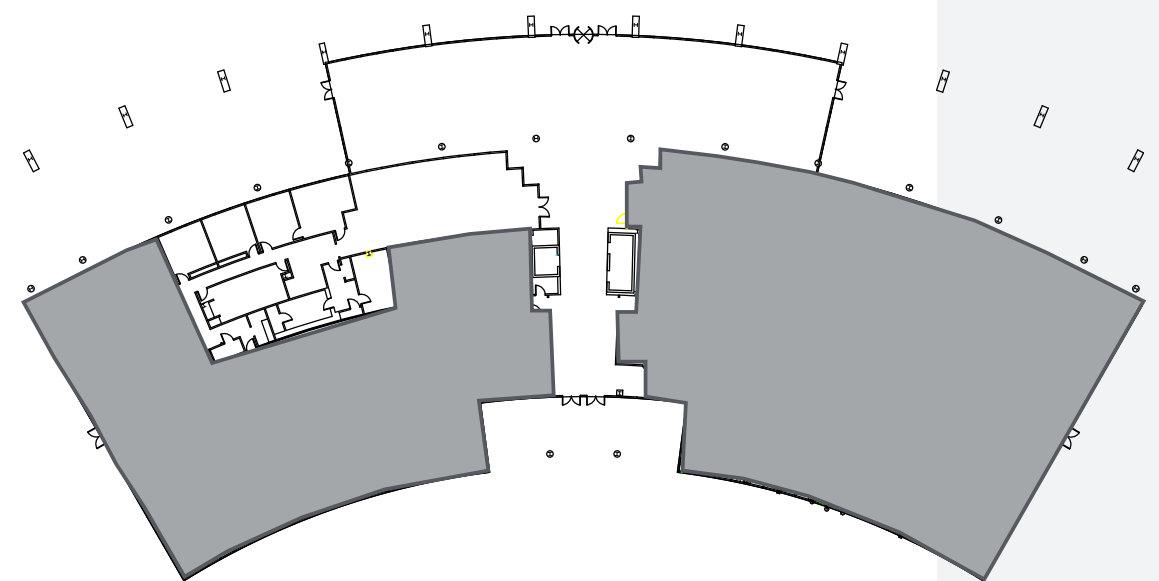
# ENTERPRISE PARK

SUITE 100 **4,526 SF**



## NOTES

- Former retail bank branch space
- First-floor suite
- Direct access from building lobby
- In-place teller stations
- In-place vault
- Two drive-up ATM lanes



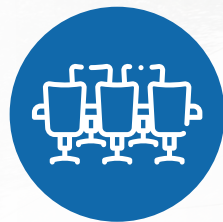
# ENTERPRISE PARK

## highlights

- Former retail bank branch space situated on the first floor with direct access from building lobby and drive-up ATM capabilities
- Four-floor office building with scenic pond views, outdoor seating, and walking paths
- Easy access to I-95, Butler Boulevard, US-1, and I-295
- Dedicated signage opportunity along Belfort Road
- Monument signage available with excellent visibility from Butler Boulevard and Belfort Road
- Close to area amenities including St. Johns Town Center
- Parking ratio: 4.00 / 1,000



ON-SITE  
CAFE



CONFERENCE  
ROOM



TRANQUIL  
SETTING

UNIQUE  
INTERIOR & EXTERIOR  
ARCHITECTURAL DESIGN

# ENTERPRISE PARK

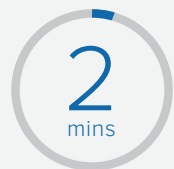
## DINING

1. Chick-Fil-A
2. Starbucks
3. Chicken Salad Chick
4. Ill Forks
5. Another Broken Egg
6. Mellow Mushroom
7. Miller's Ale House
8. Burrito Gallery
9. Midtown Table
10. St. Johns Center
  - Cantina Laredo
  - The Capital Grille
  - Seasons 52
  - Firebirds Woodfire Grill
  - Chuy's
  - Ida Claire
  - Chipotle
  - Fogo de Chão

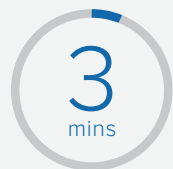
## HOTELS

1. Holiday Inn Express
  2. Marriott Jacksonville
  3. Courtyard by Marriott
  4. Hampton Inn
  5. Aloft Tapestry Park
  6. Sheraton Jacksonville
  7. Hilton Home2Suites
  8. Hyatt Place
- 
- Cheddar's Scratch Kitchen
  - Texas de Brazil
  - Maggiano's Little Italy
  - Bahama Breeze
  - Prati Italia
  - BurgerFi
  - True Food Kitchen
  - RH Rooftop

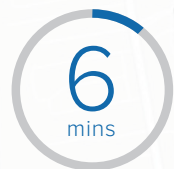
I-95



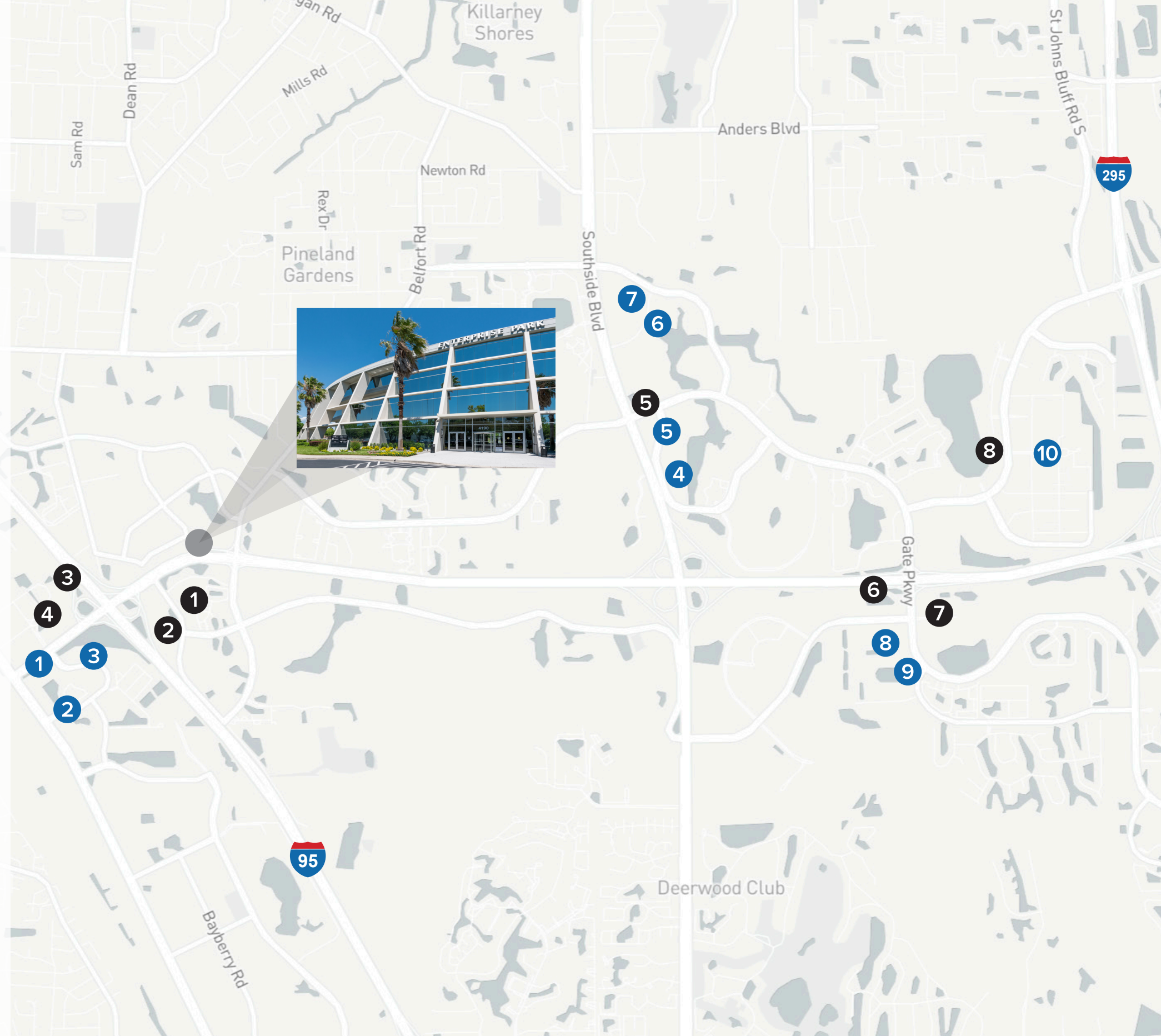
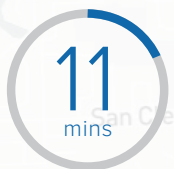
Butler Boulevard



St. Johns Town Center



Downtown Jacksonville



# ENTERPRISE PARK

4190 Belfort Road, Jacksonville

For more information or to arrange a tour, please contact:

**Michael Loftin**  
(904) 559 3911  
michael.loftin@jll.com

**Jesse Shimp**  
(904) 559 3910  
jesse.shimp@jll.com

[bradfordallen.com](http://bradfordallen.com)

© 2023 Bradford Allen. All rights reserved.

The information contained herein has been obtained from sources deemed to be reliable; however, it has not been independently verified, and no warranties, express or implied, are made as to the accuracy thereof. Any projections, opinions, assumptions, or estimates used are for example only and do not represent the current or future performance of the property. You and your advisors should conduct a thorough, independent investigation of the property to determine to your satisfaction the suitability of the property for your needs.

