

2550 E JEFFERSON ST



FOR SALE

A well-equipped education campus located in central Phoenix.

PHOENIX, AZ 85034

±20,751 SF

BUILDING AREA

\$2.75M

SALE PRICE



Located in central Phoenix, this ±1.36 AC educational facility offers a flexible campus environment in a highly accessible location.

Built in 2010

14 Classrooms

Administrative Areas

Gymnasium

Open Study Areas

Restrooms/Locker Rooms

Specialty Audio/Video and Lab Areas

76 Parking Spaces

Two light rail stops ±100 yards away along Jefferson and Washington Streets

±\$132.52

PRICE P/SF

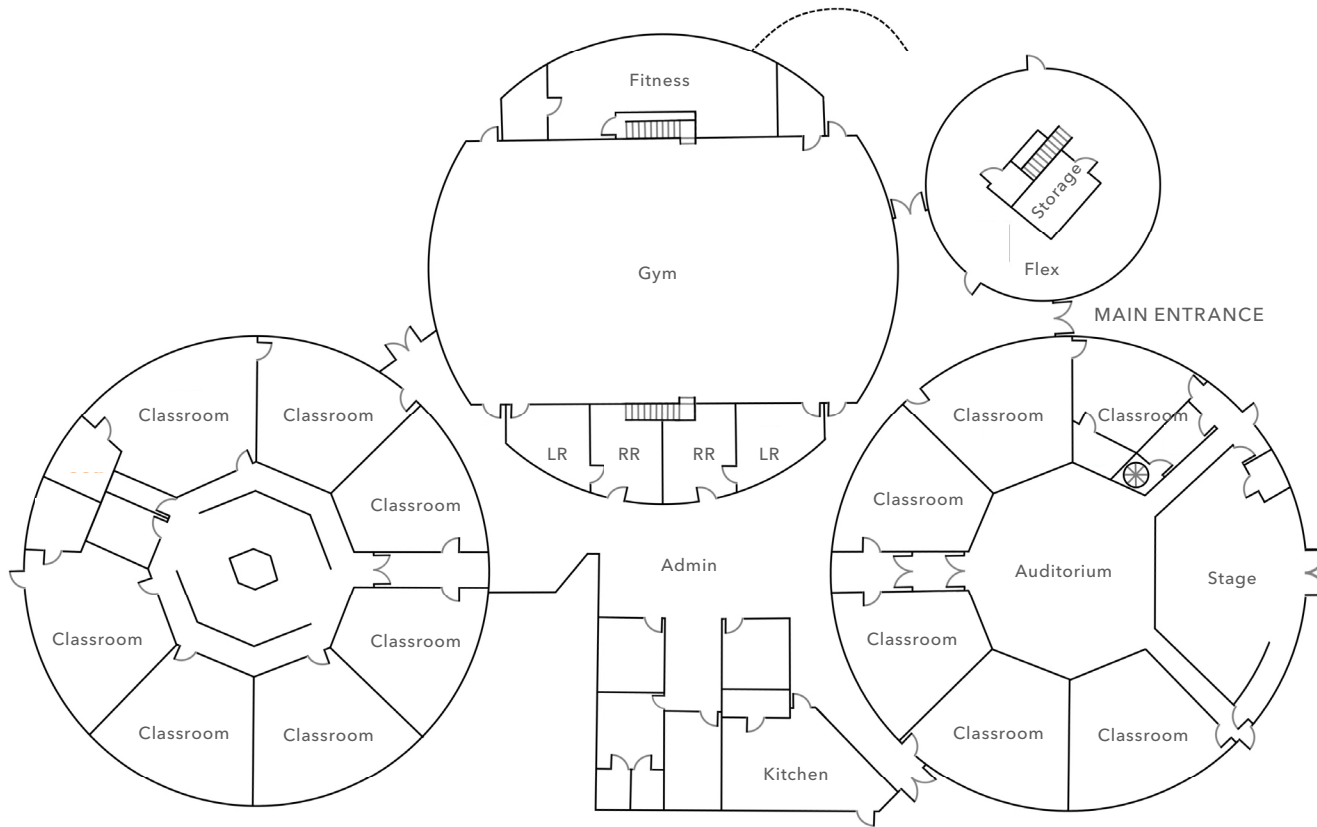
FLOOR PLAN

±1.36 AC

AVAILABLE

±\$132.52

PRICE P/SF







2550 E JEFFERSON ST

*For more information on
this property, please contact*

DAVE CARDER
602.513.5192
dave.carder@kidder.com

KIDDER.COM

This information supplied herein is from sources we deem reliable. It is provided without any representation, warranty, or guarantee, expressed or implied as to its accuracy. Prospective Buyer or Tenant should conduct an independent investigation and verification of all matters deemed to be material, including, but not limited to, statements of income and expenses. Consult your attorney, accountant, or other professional advisor. All Kidder Mathews designs are the sole property of Kidder Mathews. Branded materials and layouts are not authorized for use by any other firm or person.

